



INDUSTRIAL | FOR LEASE

4901 Wilkinson Boulevard | Charlotte

Great for automotive use, this middle unit fronts the heavily trafficked Wilkinson Boulevard, right off Billy Graham Parkway.

BRYAN BUTLER
c 704 953 7119
bryan.butler@cbcmecca.com

 **COLDWELL
BANKER
COMMERCIAL**
MECA



PROPERTY INFORMATION

SF*

Total - +/- 16,000 SF
+/- 3,612 SF for lease

TAX ID

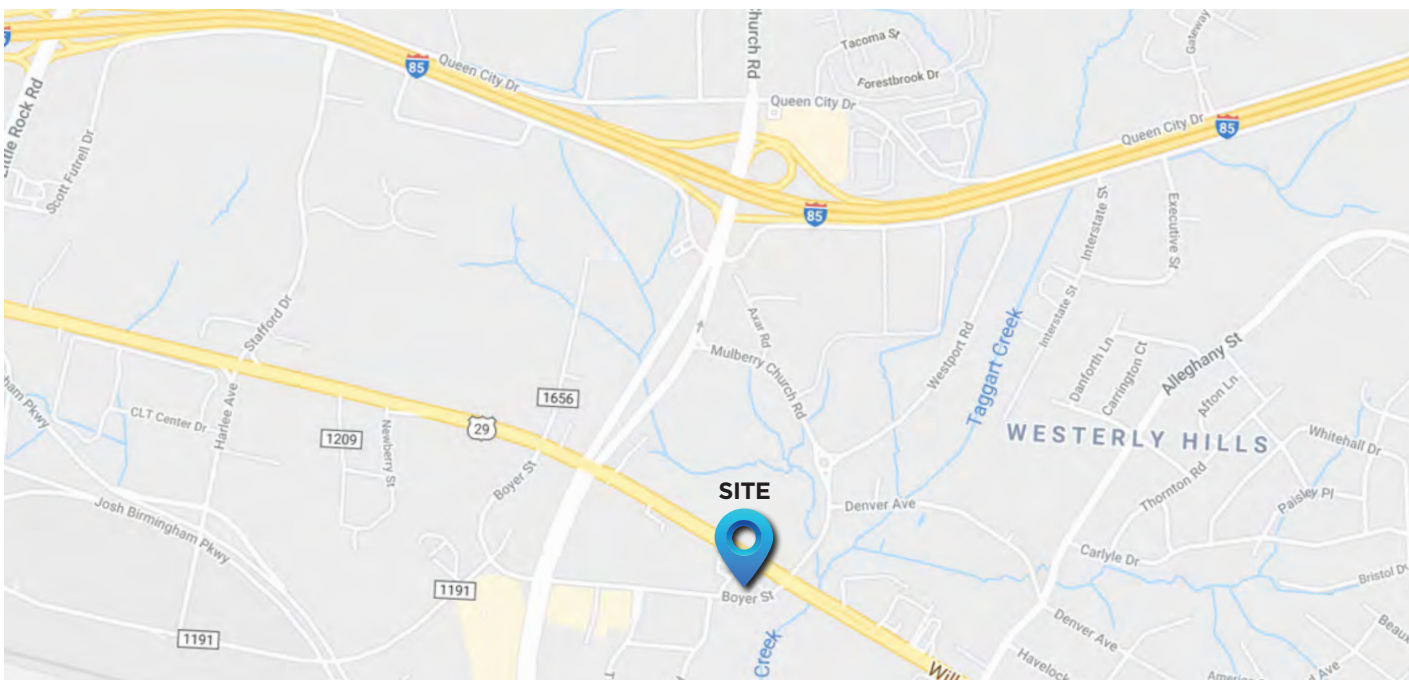
11512106

ZONED

I-1

FEATURES

- Access from Wilkinson Boulevard and Boyer Street
- Located within a multi-tenant building
- Four parking spaces available in front and 10 spaces available in rear of building



LEASE RATE

\$12 per SF

BRYAN BUTLER

c 704 953 7119

bryan.butler@cbcmeca.com

Coldwell Banker Commercial

MECA

2320 W. Morehead St. | 2nd Floor

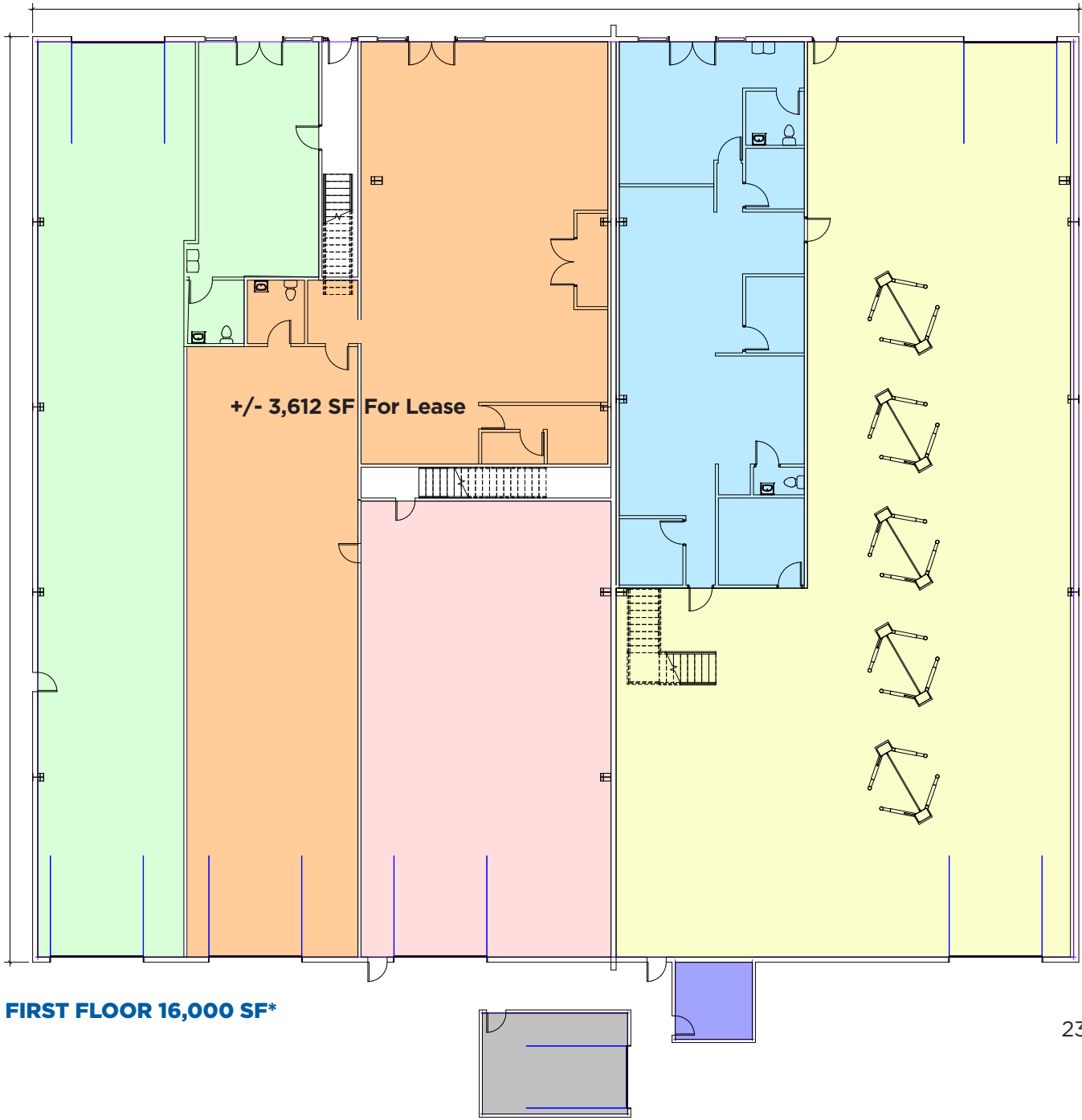
Charlotte, NC 28208



MECA

CBCMECA.COM

©2020 Coldwell Banker Real Estate LLC, dba Coldwell Banker Commercial Affiliates. All Rights Reserved. Coldwell Banker Real Estate LLC, dba Coldwell Banker Commercial Affiliates fully supports the principles of the Equal Opportunity Act. Each Office is Independently Owned and Operated. Coldwell Banker Commercial and the Coldwell Banker Logo are registered service marks owned by Coldwell Banker Real Estate LLC, dba Coldwell Banker Commercial Affiliates.



+/- 3,612 SF For Lease

FIRST FLOOR 16,000 SF*

BRYAN BUTLER
 c 704 953 7119
 bryan.butler@cbcmeca.com
 Coldwell Banker Commercial
 MECA
 2320 W. Morehead St. | 2nd Floor
 Charlotte, NC 28208



CBCMECA.COM

©2020 Coldwell Banker Real Estate LLC, dba Coldwell Banker Commercial Affiliates. All Rights Reserved. Coldwell Banker Real Estate LLC, dba Coldwell Banker Commercial Affiliates fully supports the principles of the Equal Opportunity Act. Each Office is Independently Owned and Operated. Coldwell Banker Commercial and the Coldwell Banker Commercial Logo are registered service marks owned by Coldwell Banker Real Estate LLC, dba Coldwell Banker Commercial Affiliates.