

11672 GATEWAY BOULEVARD • Los Angeles, CA 90064

BARRINGTON GATEWAY CENTER



**SECOND FLOOR OFFICE SPACE
FOR LEASE**



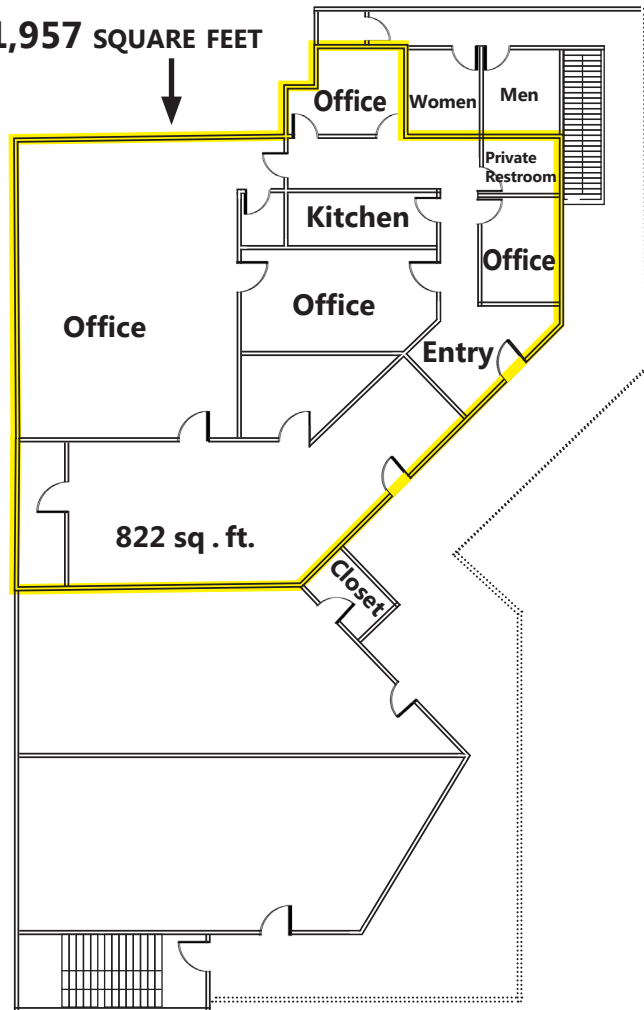
RAFAEL PADILLA
310.395.2663 X102
RAFAEL@PARCOMMERCIAL.COM
LIC# 00960188

ARTHUR PETER
310.395.2663 X101
ARTHUR@PARCOMMERCIAL.COM
LIC# 01068613

**BARRINGTON/GATEWAY
2ND LEVEL PLAN**

PROPERTY CHARACTERISTICS

1,957 SQUARE FEET



GATEWAY AVENUE

**11672 GATEWAY BOULEVARD
LOS ANGELES, CA 90064**

SIZE: Approximately 2,779 square feet (Divisible to approximately 822 square feet & 1,957 square feet)

RATE: \$2.75 per square foot per month, Modified Gross (Net of electric and janitorial)

TERM: 3 - 5 years

PARKING: Surface parking for clients and street parking for employees

AVAILABLE: Immediately

- Many onsite restaurants and services
- Excellent location with great access
- Individually air conditioned
- Located on the southeast corner of Barrington Avenue and Gateway Boulevard blocks from the 405 and 10 fwy in West Los Angeles



www.parcommercial.com

RAFAEL PADILLA

310.395.2663 X102

RAFAEL@PARCOMMERCIAL.COM

LIC# 00960188

ARTHUR PETER

310.395.2663 X101

ARTHUR@PARCOMMERCIAL.COM

LIC# 01068613

All information furnished is from sources deemed reliable and which we believe to be correct, but no representation or guarantee is given as to its accuracy and is subject to errors and omissions. All measurements are approximate and have not been verified by Broker. You are advised to conduct an independent investigation to verify all information.

AERIAL PHOTO



www.parcommercial.com

RAFAEL PADILLA

310.395.2663 X102

RAFAEL@PARCOMMERCIAL.COM

LIC# 00960188

ARTHUR PETER

310.395.2663 X101

ARTHUR@PARCOMMERCIAL.COM

LIC# 01068613

All information furnished is from sources deemed reliable and which we believe to be correct, but no representation or guarantee is given as to its accuracy and is subject to errors and omissions. All measurements are approximate and have not been verified by Broker. You are advised to conduct an independent investigation to verify all information.