

Pine & Boylston

610 E. Pine Street | Seattle, WA 98122

NEWMARK

ASANA
PARTNERS

Property Highlights

- Iconic Capitol Hill location at the corner of Pine & Boylston, steps away from the hottest bars and restaurants in the city
- Historic building with easy access to downtown Seattle and numerous nearby parking and transportation options
- Only five blocks from the Capitol Hill Link light rail station
- Open ceiling creative spaces with high-end finishes
- 30+ restaurants, bars and amenities within three blocks
- Close proximity to Broadway, and I-5 North & South access



99

Walk Score



99

Transit Score



82

Bike Score



Location



Availabilities

Suite 202



+/-1,989 RSF

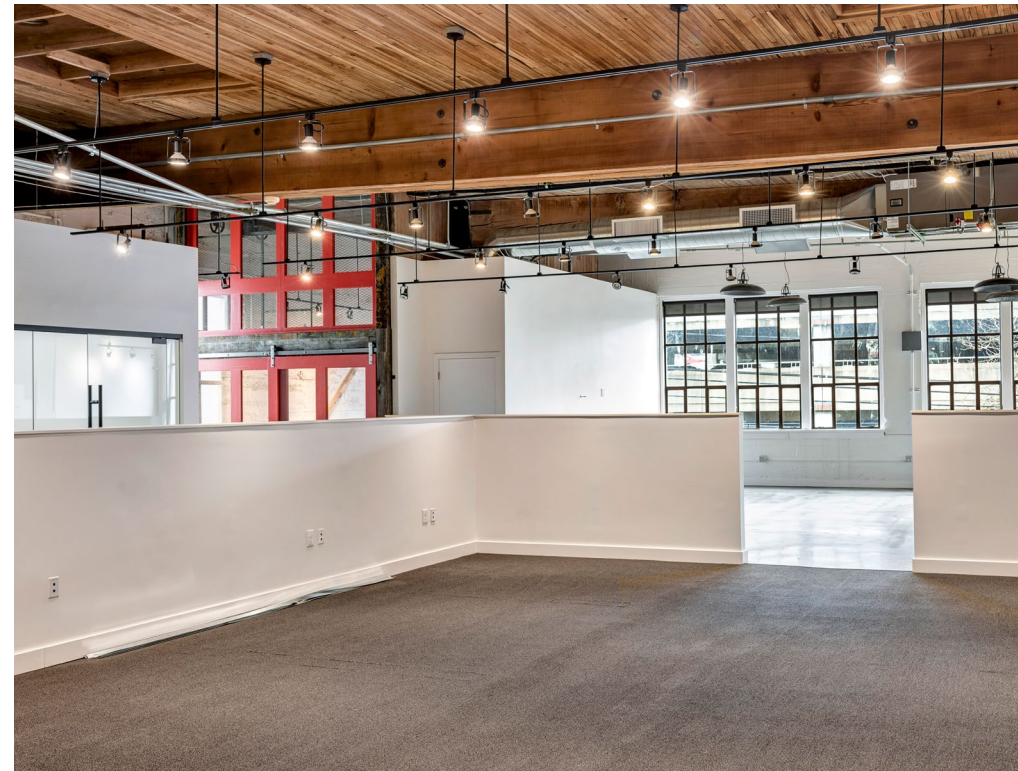
- Available Now
 - Large windows provide ample natural light
 - Open build-out with large meeting areas
-

Suite 310

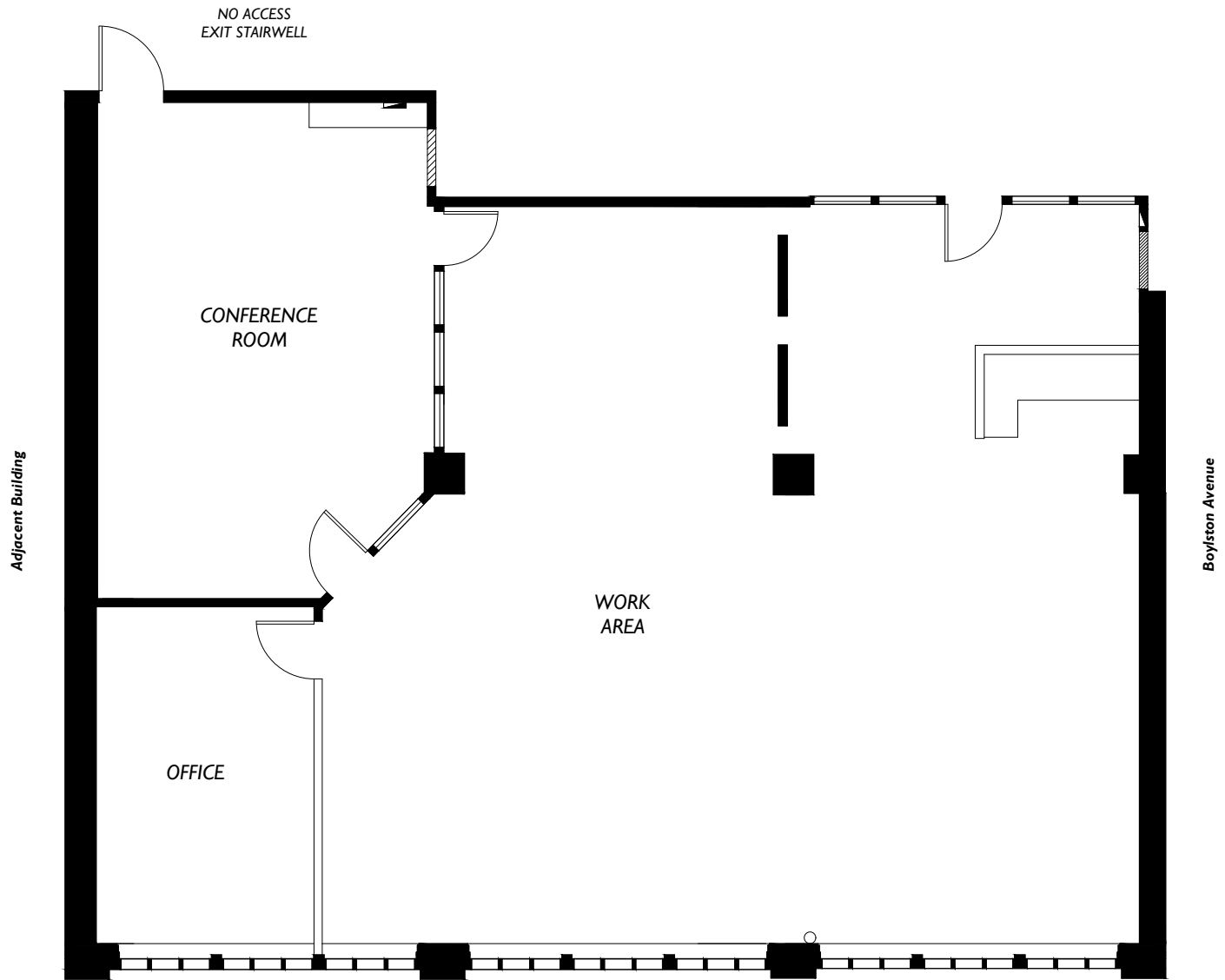


+/- 4,505 RSF

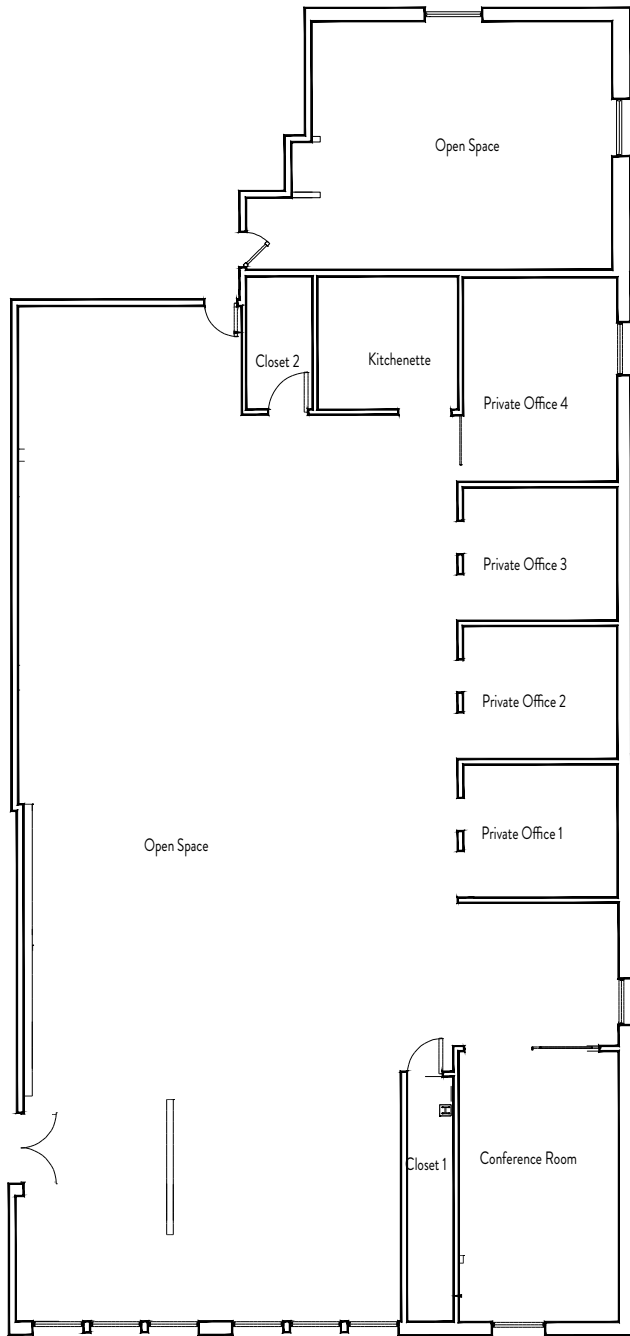
- Available Now
 - Exposed wood beam ceilings with above-standard clear height
 - Gorgeous polished concrete floors
 - Highly-functional existing build-out with a reception, conference room, four private offices, and a kitchenette
-



Suite 202 - +/-1,989 RSF



Suite 310 - +/- 4,505 RSF



Pine & Boylston

610 E. Pine Street | Seattle, WA 98122

Contact us for more details:

Cavan O'Keefe
Senior Managing Director
206.395.2903
cavan.okeefe@nmrk.com

Daniel Seger
Senior Managing Director
206.487.5163
daniel.seger@nmrk.com

Anne Marie Koehler
Senior Managing Director
206.487.5167
annemarie.koehler@nmrk.com

Erika Koehler
Senior Managing Director
206.487.5168
erika.koehler@nmrk.com

NEWMARK

A S A N A
P A R T N E R S