

MEDICAL OFFICE SPACE FOR LEASE

MAINLAND MEDICAL PLAZA

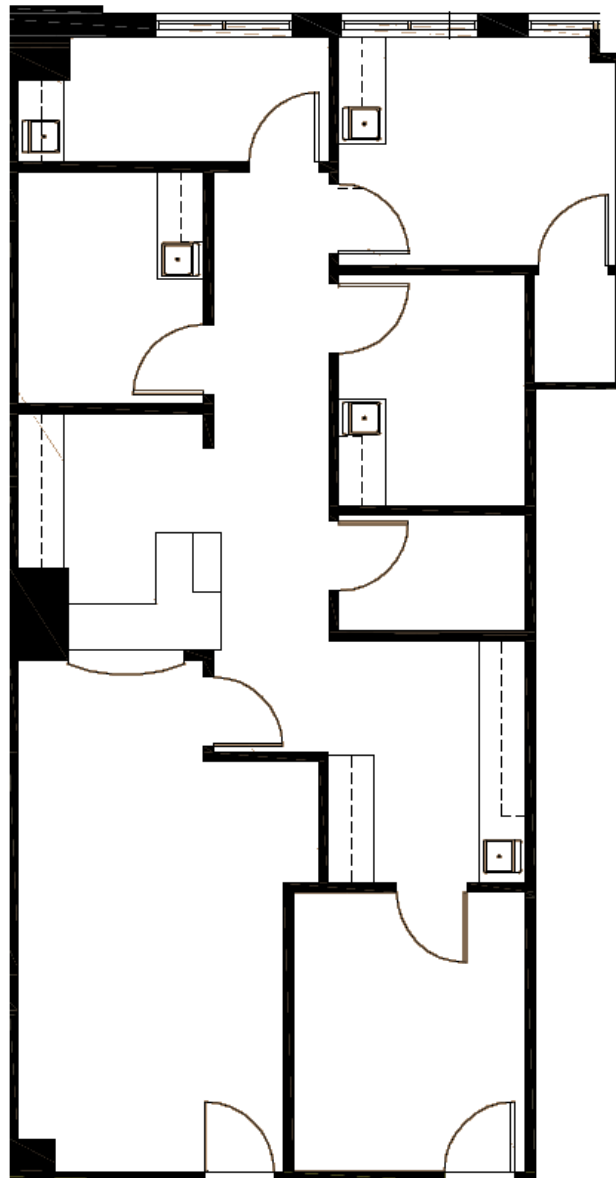
6807 EMMETT F. LOWRY EXPWY | TEXAS CITY, TEXAS 77591

1900 West Loop S
Suite 1300
Houston, TX 77027

T 713.270.7700
F 713.270.6285
transwestern.com

FLOOR PLAN

SUITE 306: 1,240 SF



CONTACT

ASHLEY CASSEL, SVP
713.490.3785
ashley.cassel@transwestern.com

DANIELLE LANZA, ASSOCIATE
713.231.1605
danielle.lanza@transwestern.com

The information provided herein was obtained from sources believed reliable; however, Transwestern makes no guarantees, warranties or representations as to the completeness or accuracy thereof. The presentation of this property is submitted subject to errors, omissions, change of price or conditions, prior sale or lease, or withdrawal without notice. Copyright © 2018 Transwestern.