

FOR LEASE

# OFFICE & LAB SPACE

## 1100 NE CIRCLE BOULEVARD

CORVALLIS, OREGON



[www.cbre.com/hpcorvallis](http://www.cbre.com/hpcorvallis)

FOR MORE  
INFORMATION  
PLEASE  
CONTACT

**Kevin Kaufman**

503.221.4808

kevin.kaufman@cbre.com

[www.cbre.com/kevin.kaufman](http://www.cbre.com/kevin.kaufman)

CBRE | 1300 SW Fifth Avenue | Suite 3000 | Portland, OR 97201

© 2013 CBRE, Inc. This information has been obtained from sources believed reliable. We have not verified it and make no guarantee, warranty or representation about it. Any projections, opinions, assumptions or estimates used are for example only and do not represent the current or future performance of the property. You and your advisors should conduct a careful, independent investigation of the property to determine to your satisfaction the suitability of the property for your needs. Photos herein are the property of their respective owners and use of these images without the express written consent of the owner is prohibited.

[www.cbre.com/portland](http://www.cbre.com/portland)



FOR LEASE

# OFFICE & LAB SPACE

## 1100 NE CIRCLE BOULEVARD

CORVALLIS, OREGON

### AVAILABILITY:

1st floor: 20,254 SF

2nd floor: 25,425 SF

Total Available: 45,679 SF

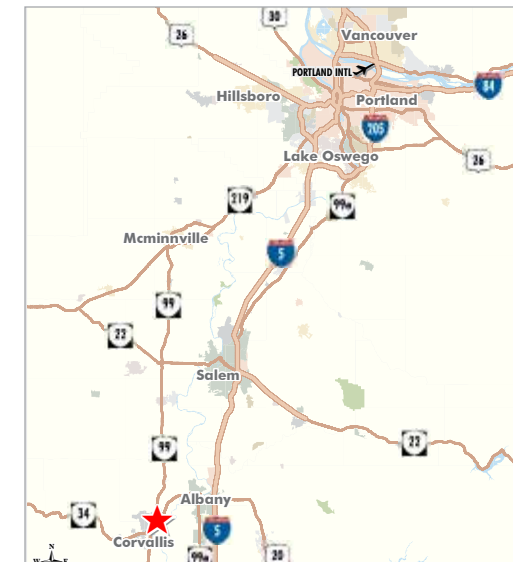
### CAMPUS FEATURES:

Abundant parking

Walking paths

Fitness Center

Cafe Kiosk



The premiere office opportunity in Corvallis, 1100 NE Circle Boulevard is a modern, steel and concrete, Class A structure. Built in 1997, it contains 255,481 SF of office, lab and common space.

Located on the 197 acre, 2.2 million SF Hewlett Packard owned campus, 1100 NE Circle Boulevard is visible from the southern entrance at Hwy 20.

The campus sits along the banks of the Willamette River and just two miles from Oregon State University. Additionally, it is home to the Oregon Nanoscience and Microtechnologies Institute (ONAMI).

[www.cbre.com/hpcorvallis](http://www.cbre.com/hpcorvallis)

FOR MORE  
INFORMATION  
PLEASE  
CONTACT

**Kevin Kaufman**

503.221.4808

kevin.kaufman@cbre.com

[www.cbre.com/kevin.kaufman](http://www.cbre.com/kevin.kaufman)

This broker is licensed in  
the State of Oregon

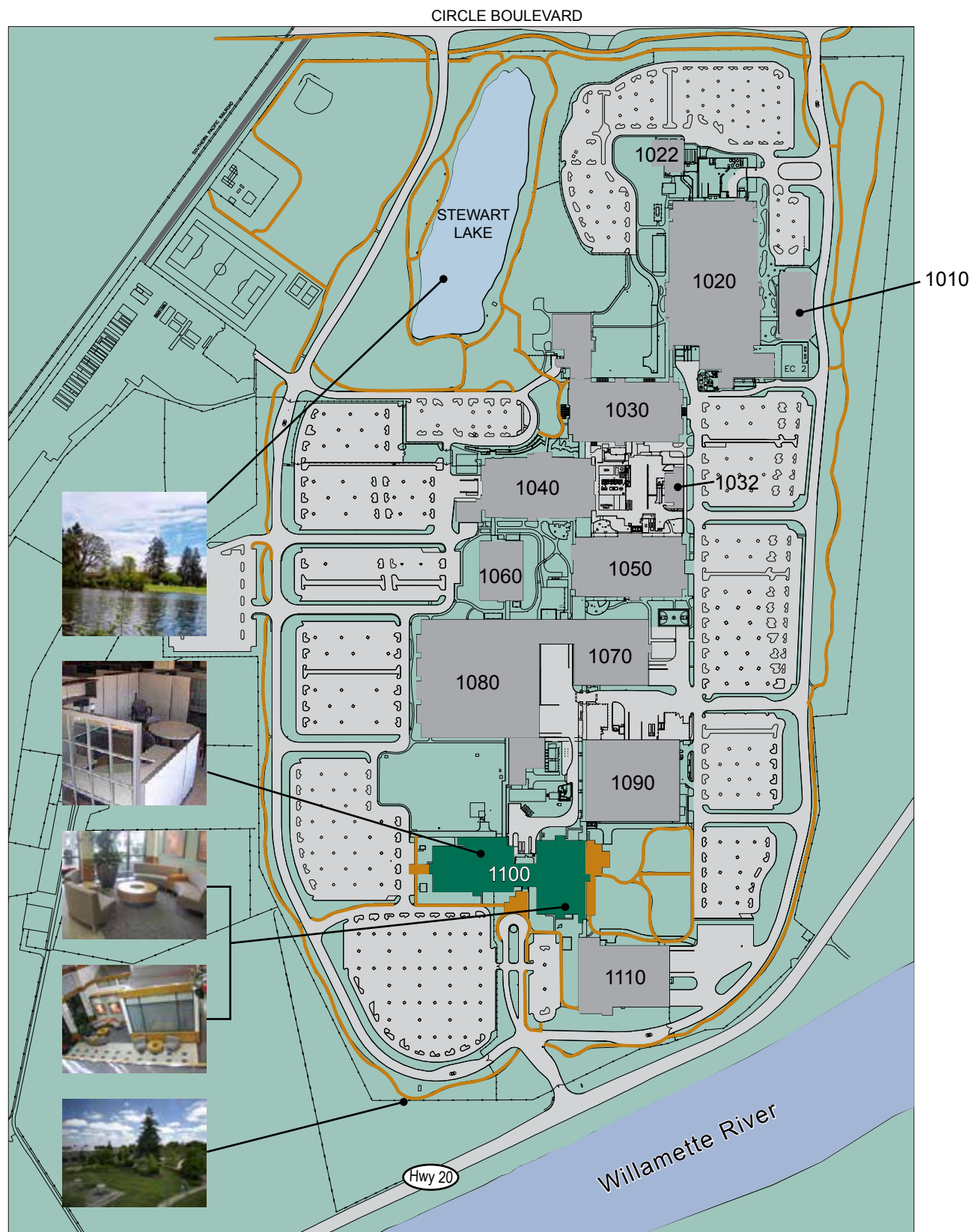




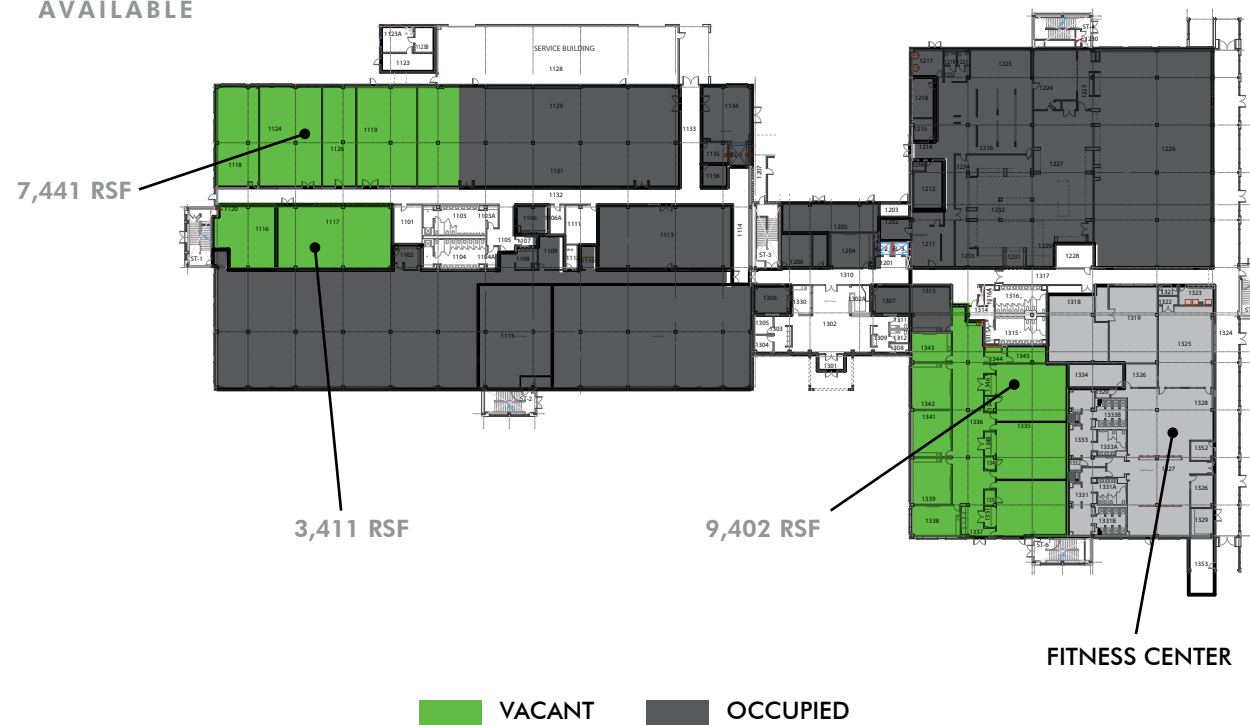
# OFFICE & LAB SPACE

## 1100 NE CIRCLE BOULEVARD

CORVALLIS, OR



**1ST FLOOR**  
20,254 RSF  
AVAILABLE



**2ND FLOOR**  
25,425 RSF  
AVAILABLE

