



10620 PARK ROAD

CHARLOTTE NC 28210

**Medical Office
Space for Lease**



PROPERTY HIGHLIGHTS



Adjacent to Atrium-Pineville Hospital - a 250 bed acute care facility



Convenient Access to **I-485, I-77 and Hwy 51 (Pineville-Matthew Rd)**

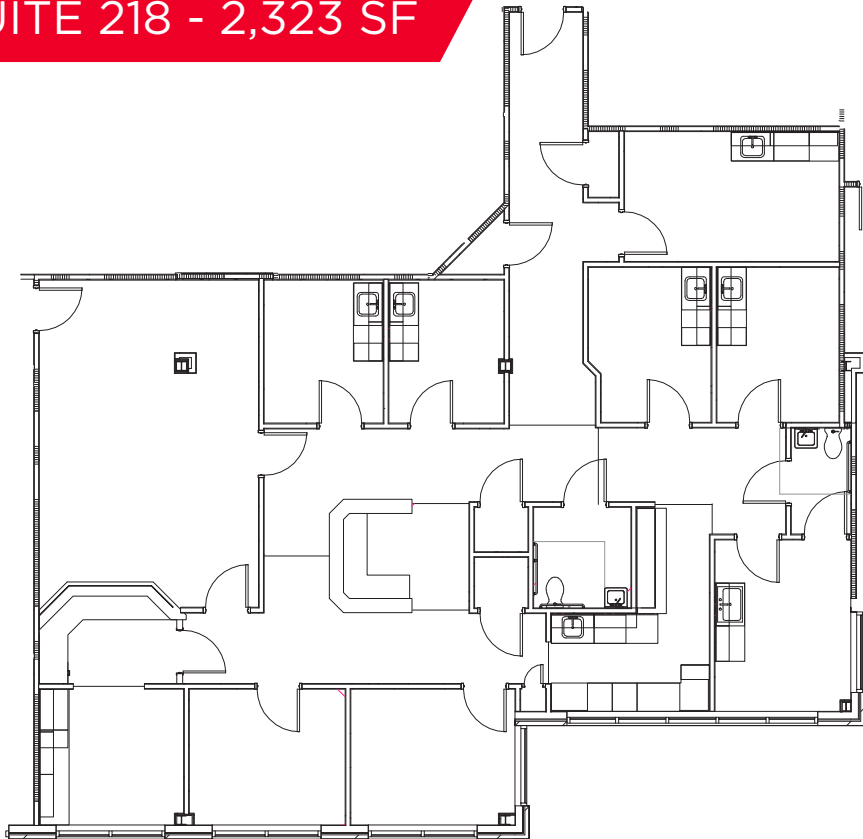


On-campus property management office

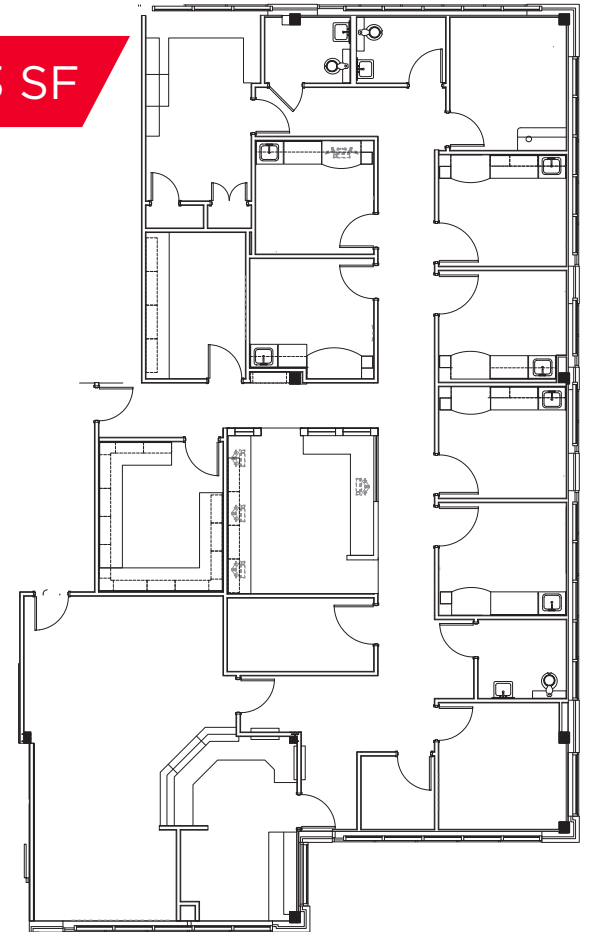


Covered patient drop off area

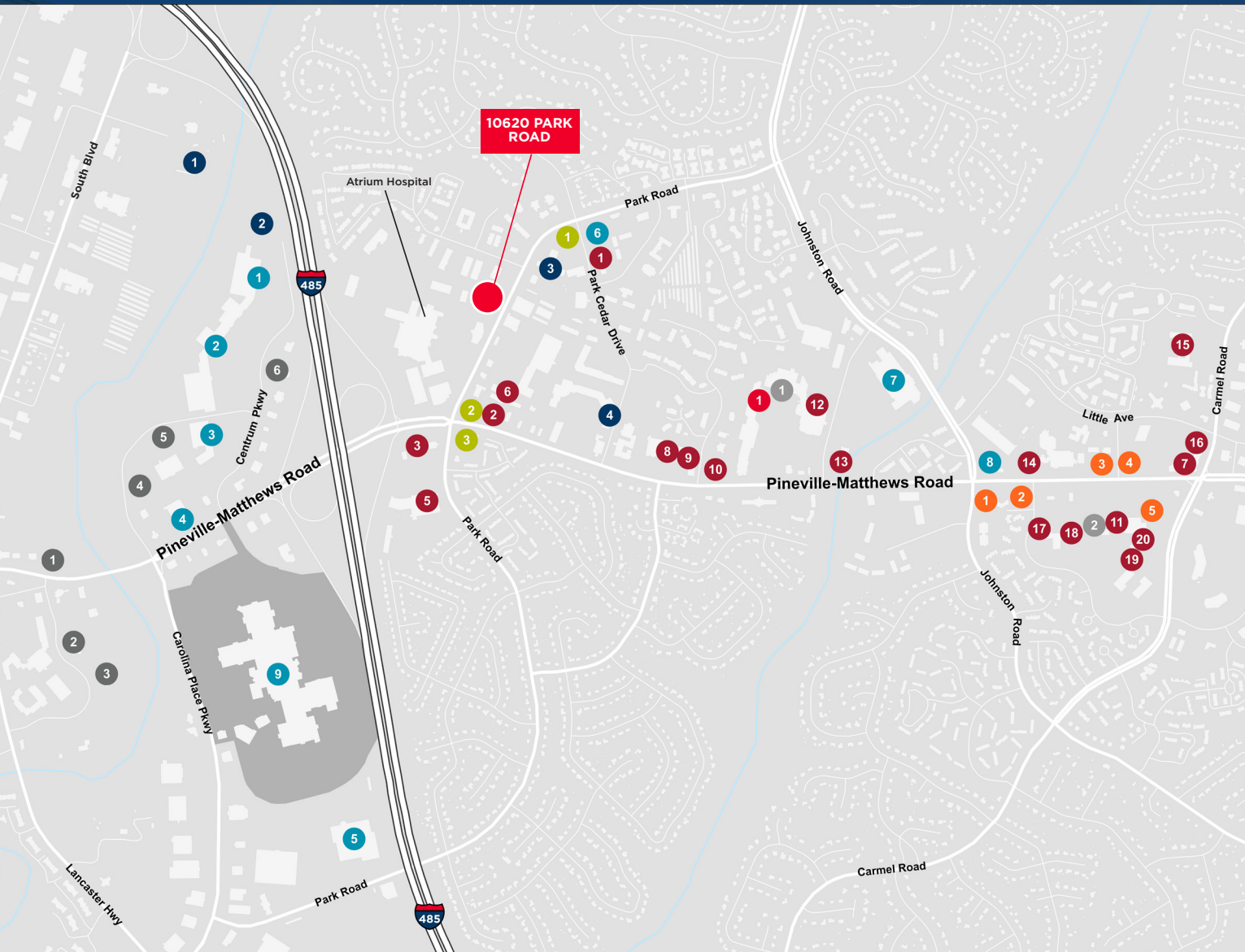
SUITE 218 - 2,323 SF



SUITE 208 - 3,923 SF



LOCATION & AMENITIES



- **BANKS**
 - 1 First Citizens Bank
 - 2 SunTrust
 - 3 Wells Fargo Bank
 - 4 Fifth Third Bank
 - 5 BB&T
- **GAS**
 - 1 Marathon Gas
 - 2 Sam's Mart
 - 3 Circle K
- **RESTAURANTS**
 - 1 Showmars
 - 2 Jimmy Johns
 - 3 Starbucks
 - 4 Firehouse Subs
 - 5 Monterrey Mexican Restaurant
 - 6 Panea Bread
 - 7 Nakato Japanese Restaurant
 - 8 Fox & Hound
 - 9 Outback Steakhouse
 - 10 Chicken Salad Chick
 - 11 Viet Thai Noodle House
 - 12 Trio
 - 13 Chipotle Mexican Grill
 - 14 Char Bar No. 7
 - 15 Bonefish Grill
 - 16 Amelie's French Bakery & Café
 - 17 Zoes Kitchen
 - 18 Cabo's Mexican Cuisine & Cantina
 - 19 The Rusty Onion
- **GROCERY**
 - 1 Walmart Neighborhood Market
 - 2 The Fresh Market
- **SHOPPING**
 - 1 The Home Depot
 - 2 Stein Mart
 - 3 Best Buy
 - 4 Office Depot
 - 5 Sams Club
 - 6 CVS
 - 7 Lowe's Home Improvement
 - 8 Walgreens
 - 9 Carolina Place Mall
- **LODGING**
 - 1 Quality Suites
 - 2 Hampton Inn & Suites
 - 3 Hilton Garden Inn
 - 4 Best Western Plus
 - 5 Four Points by Sheraton
 - 6 Comfort Suites
- **RECREATION**
 - 1 The Effortless Golf Center
 - 2 Sky Zone
 - 3 Crossfit Jane
 - 4 Burn Boot Camp
- **SERVICE**
 - 1 United States Postal Service



Grant Keyes

+1 704 887 3021

grant.keyes@cushwake.com

©August 7, 2019 12:10 PM Cushman & Wakefield. All rights reserved. The information contained in this communication is strictly confidential. This information has been obtained from sources believed to be reliable but has not been verified. No warranty or representation, express or implied, is made as to the condition of the property (or properties) referenced herein or as to the accuracy or completeness of the information contained herein, and same is submitted subject to errors, omissions, change of price, rental or other conditions, withdrawal without notice, and to any special listing conditions imposed by the property owner(s). Any projections, opinions or estimates are subject to uncertainty and do not signify current or future property performance.