

370 Oser Avenue Hauppauge NY



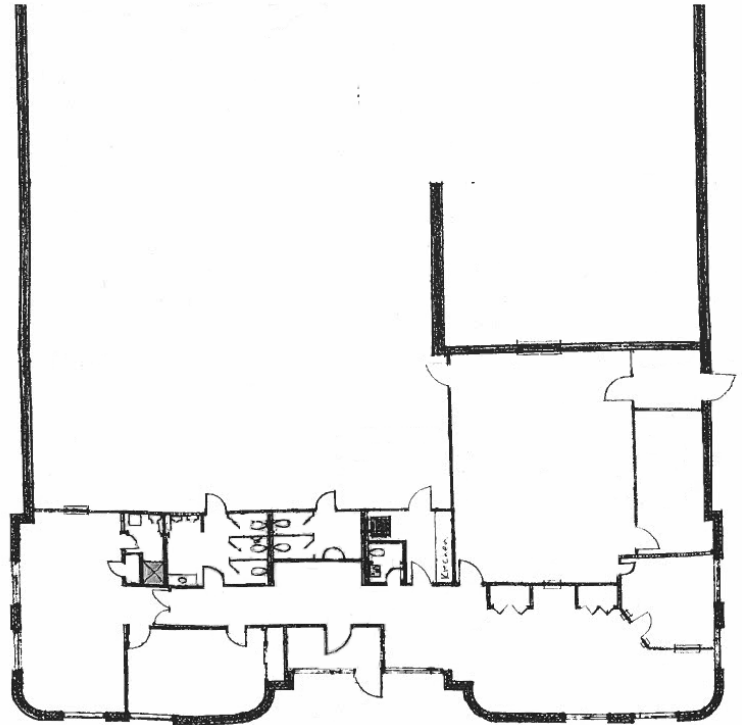
This Building is near the start
of Oser Avenue in the
1,000-acre
Hauppauge Industrial Park

Easy to get to
Near all major roads
Just off Long Island Expressway,
Northern State
and Sagtikos Pkwy

370 Oser Ave. Hauppauge
20,000 SF

Available April

Office: 12% ±
Truck Docks: 2
Drive In: 2
Power: 400 Amps
Heat: Gas
Height: 17 feet
Sprinklers: 100%
Parking: Side & Rear



Nick Pizzardi

Director of Leasing
631 242-6300 office

516 480-4701 cell

631 242-2820 fax

NPizzardi@hrtld.com

**HEARTLAND
BUSINESS CENTER**
"BUILDING FOR INDUSTRY THE BETTER WAY"