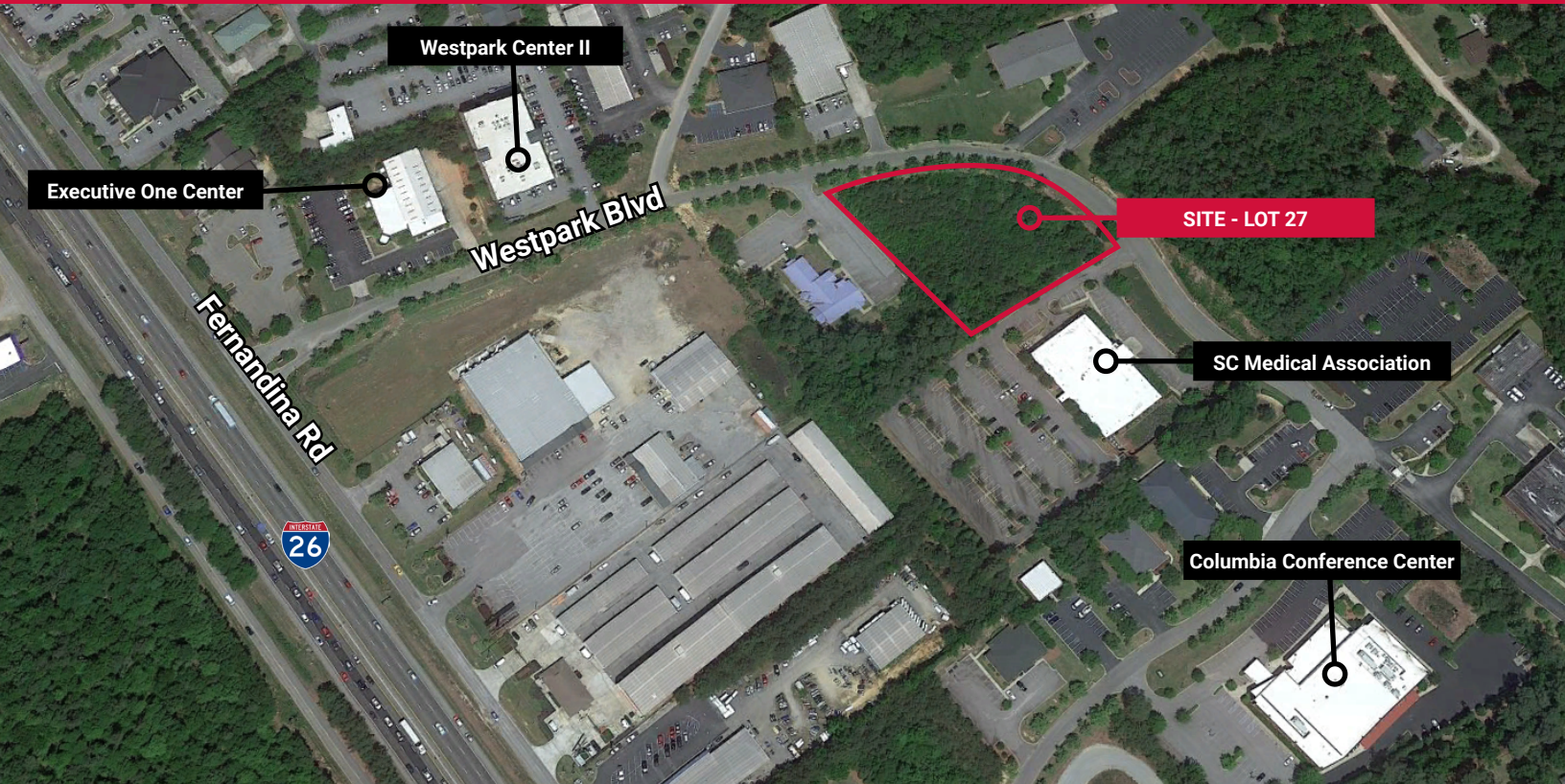


±1.59 ACRES WESTPARK OFFICE PARK

122 Westpark Blvd.
Columbia, SC 29212



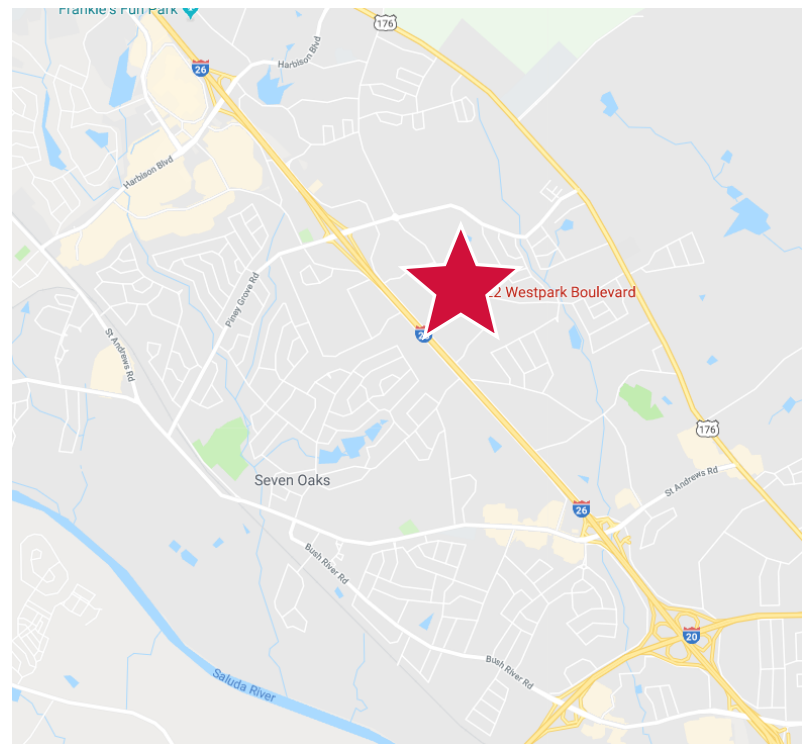
LAND FOR SALE

- ♦ ±1.59 AC located in Westpark Office Park, just off Fernandina Road and adjacent to I-26
- ♦ Visibility from I-26 (112,600 VPD)
- ♦ Zoning: PDD
- ♦ Nearby office tenants include:
 - South Carolina Dental Association
 - Benefitfirst
 - Progressive Insurance
 - South Carolina Medical Association
- ♦ **SALES PRICE: \$185,000**

Wilson Kibler

Mike Edwards

803.255.8607 mikeedwards@wilsonkibler.com



1111 Laurel Street, Columbia, South Carolina 29201

The information contained herein has been obtained from sources we believe to be reliable; however, Wilson Kibler has not conducted any investigation regarding these matters and makes no warranty or representation whatsoever regarding the accuracy or completeness of the information provided. Independently owned and operated.