

Property Features

- ❖ 2,408 sq. ft. total available space
- ❖ Outstanding location
- ❖ Facing Queens County Courthouse
- ❖ 24 / 7 access
- ❖ Immediate availability
- ❖ 100% new construction
- ❖ On-site parking available
- ❖ Heavy pedestrian and vehicular traffic

Location

Just off Van Wyck Expressway

Transportation

One block to E, F, J & Z subway, LIRR and AirTrain
Several bus lines on Sutphin Boulevard and Hillside and Jamaica Avenues

Prime Office Suites for Lease in The Heart of Jamaica

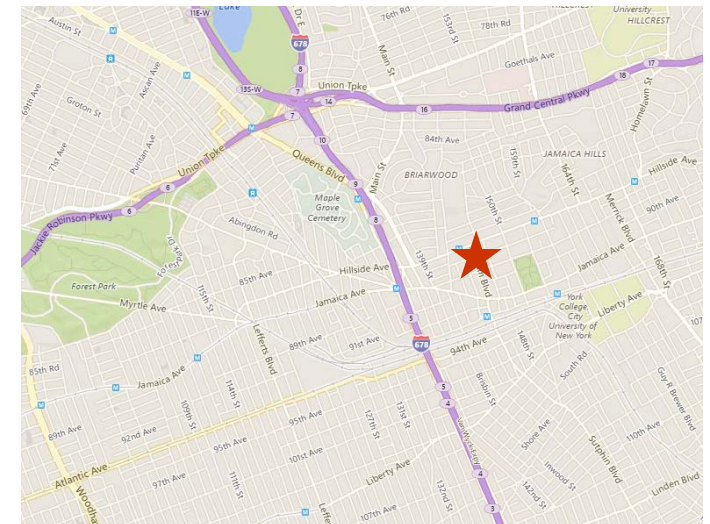
Suite 301
716 Sq. Ft.

Suite 302
600 Sq. Ft.

Suite 303
522 Sq. Ft.

Suite 304
571 Sq. Ft.

- * Suites 302-304 must be leased together
- * Suite 301 can be leased separate or with other suites



CALL FOR PRICING

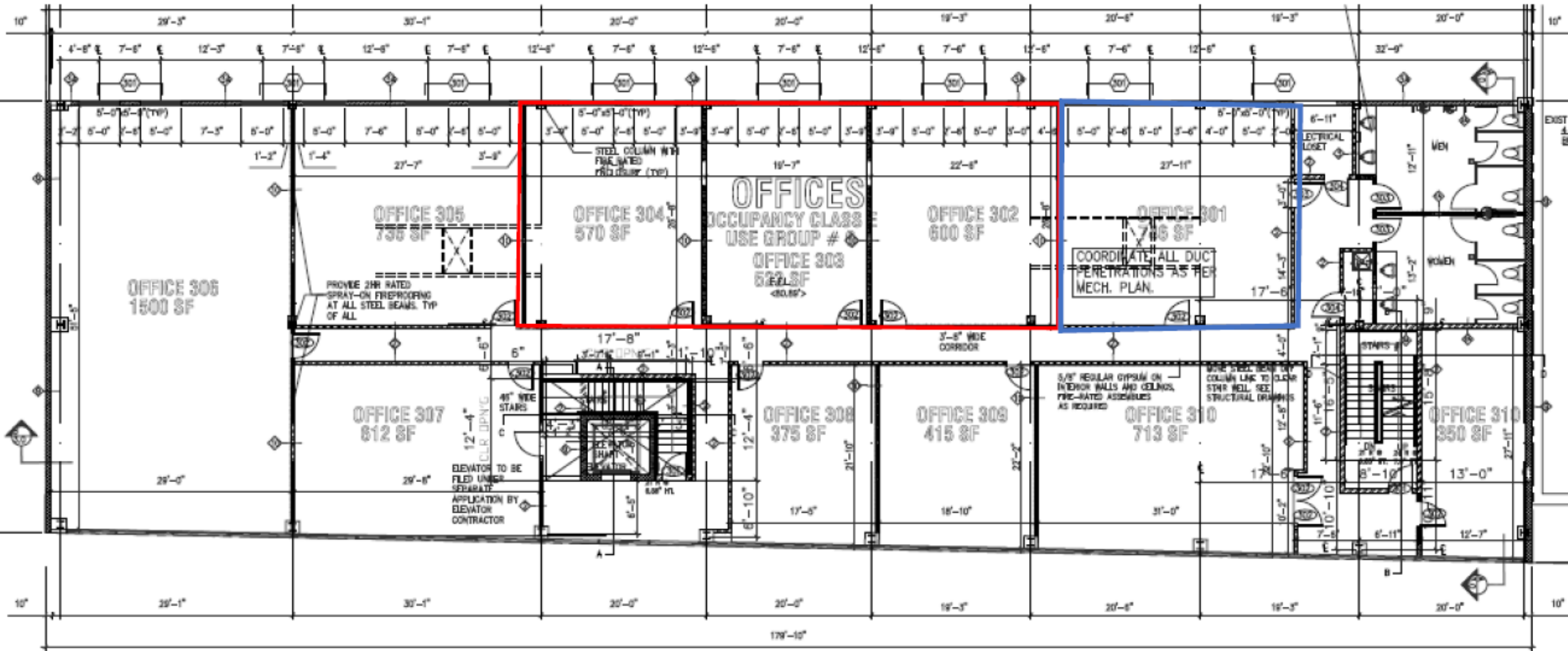
For Further Information and Inspection, Please Contact Exclusive Agent:

Melissa Grasso • (718) 371-0127 • mgrasso@s-z.com

Kaufman Astoria Studios 35-11 35th Avenue, Long Island City, NY 11101 • (718) 392-5959 • Fax (718) 937-6546

www.s-z.com

Floor Plan



For Further Information and Inspection, Please Contact Exclusive Agent:

Melissa Grasso • (718) 371-0127 • mgrasso@s-z.com

Kaufman Astoria Studios 35-11 35th Avenue, Long Island City, NY 11101 • (718) 392-5959 • Fax (718) 937-6546

www.s-z.com