



FOR SUBLEASE

65 Lovell Avenue

San Rafael, California



RARELY AVAILABLE

WHITNEY STROTZ

Executive Managing Director

Lic. 01351397

415 451 2406

whitney.strotz@cushwake.com

TONY LUCCHESI

Senior Director

Lic. 01420285

415 677 0434

tony.lucchesi@cushwake.com

900 Larkspur Landing Cir. Suite 295
Larkspur, CA 94939 | USA

cushmanwakefield.com

65 Lovell Avenue Floor Plan



* Not to Scale

Property Highlights

- 16,402 Square Feet Available
- Asking: \$1.65 / PSF/ Industrial Gross
- Functional Warehouse
- Monument Signage Available
- Minimum 18' Clear Height
- 3 Roll-Up Doors
- Office Space, Conference Room, Break Area
- Dedicated Onsite Parking
- LED: August 31, 2024

WHITNEY STROTZ

Executive Managing Director

Lic. 01351397

415 451 2406

whitney.strotz@cushwake.com

TONY LUCCHESI

Senior Director

Lic. 01420285

415 677 0434

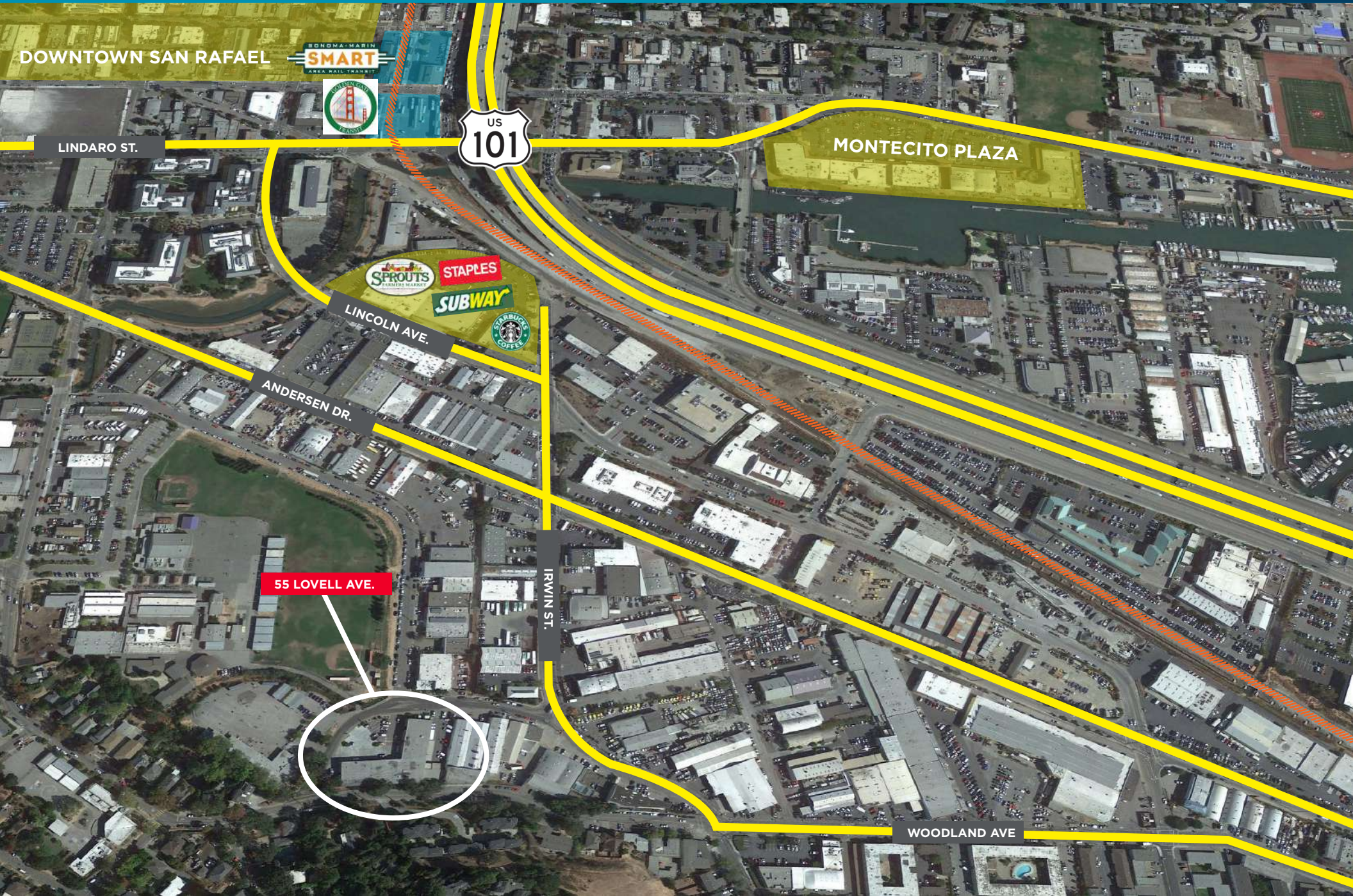
tony.lucchesi@cushwake.com



FOR SUBLEASE

65 Lovell Avenue

San Rafael, California



DOWNTOWN SAN RAFAEL



MONTECITO PLAZA

LINDARO ST.



LINCOLN AVE.

ANDERSEN DR.

55 LOVELL AVE.



IRWIN ST.

WOODLAND AVE