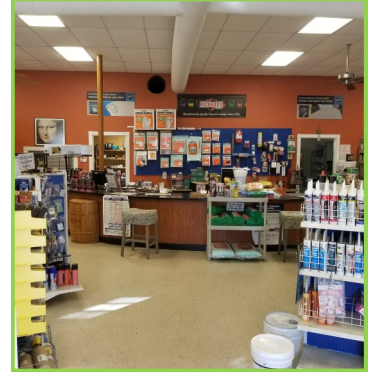


FOR SALE (By Appointment ONLY)**\$525,000****BENCHMARK**

1010 S. Nova Road, Ormond Beach, FL 32174
PALM PAINTS—BUSINESS AND REAL ESTATE

Property Information

FEATURES

- Busy Nova Road Frontage
- Business and Real Estate
- Ample Parking

DESCRIPTION

Strong Ormond Beach retail location at the corner of Nova Road and Arroyo Parkway. 5000 SF retail building with approximately 2,500 SF retail/showroom in front and 2500 sf warehouse in back with 14 ceilings and roll up door. Lot is 32,445 SF with ample room for any needed expansion. AADT of 30,500. Current owner operates a paint supply business included in the price of \$525,000. Business performance information available upon request. **DO NOT DISTURB BUSINESS OWNERS—BY APPOINT ONLY!**

PRICE

\$525,000

BUILDING SIZE

5,000 SF

LOT SIZE

32,445 SF

YEAR BUILT

1980

ZONING

- Light Industrial allows many uses

PARCEL #s

4242-04-20-0140

MLS

1039926

Randy Helle

386-235-7105

randy@helleproperties.com

BENCHMARKDAYTONA.COM

©2017 Coldwell Banker Real Estate LLC, dba Coldwell Banker Commercial Affiliates. All Rights Reserved. Coldwell Banker Real Estate LLC, dba Coldwell Banker Commercial Affiliates fully supports the principles of the Equal Opportunity Act. Each Office is Independently Owned and Operated. Coldwell Banker Commercial and the Coldwell Banker Commercial Logo are registered service marks owned by Coldwell Banker Real Estate LLC, dba Coldwell Banker Commercial Affiliates.

**Coldwell Banker Commercial
 Benchmark**

**570 Memorial Circle #300,
 Ormond Beach, FL 32174
 386-672-8530**