

260 HALSEY STREET

BEDFORD-STUYVESANT, BROOKLYN



RETAIL SPACE
FOR LEASE

BED-STUY BROOKLYN

260 HALSEY STREET

SPACE HIGHLIGHTS

LOCATION

Between Tompkins Ave & Throop Ave

SPACE

Ground Floor 400 SF
Lower Level 400 SF
Backyard 350 SF

CEILING HEIGHT

12 FT

FRONTAGE

22 FT

DIMENSIONS

22 FT x 18 FT

ZONING

C 2-4

OCCUPANCY

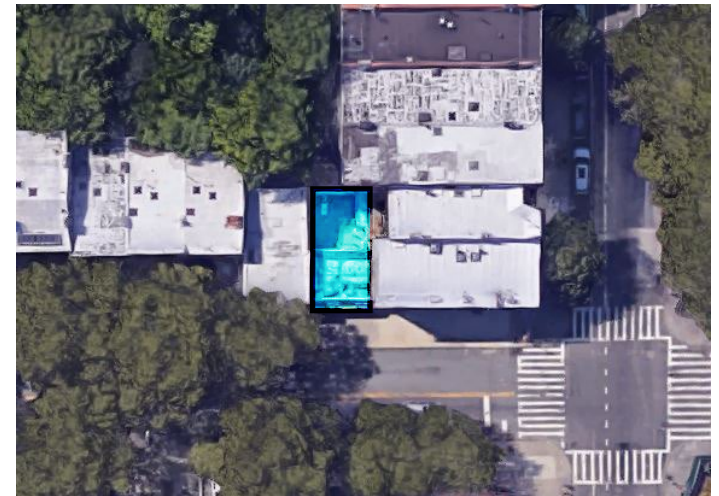
Immediate

ASKING RENT

Upon Request

HIGHLIGHTS

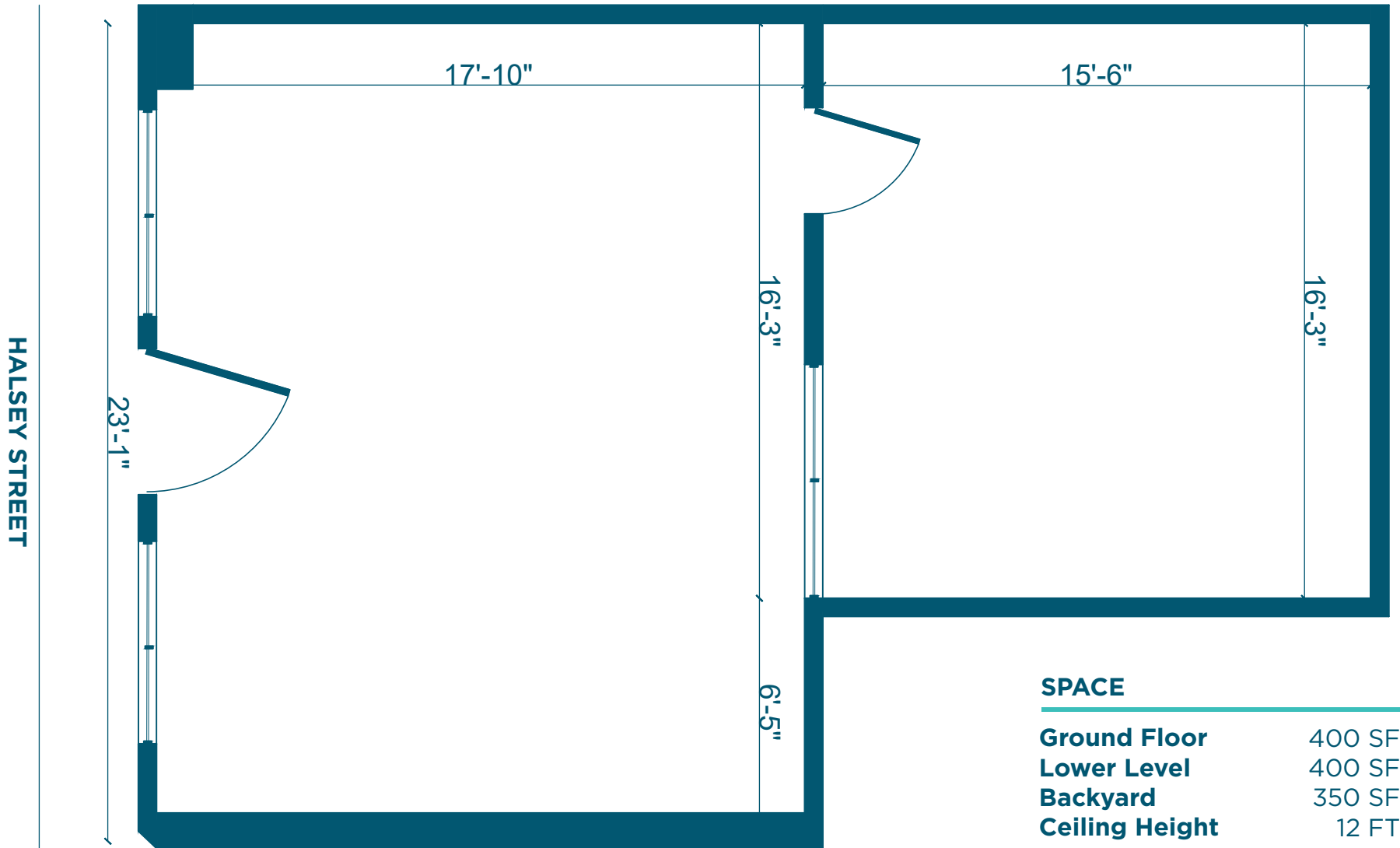
- 22 FT of frontage on Halsey St.
- Situated one store off the corner adjacent to Tompkins Ave.
- Conveniently located in bustling Bed-Stuy.
- Home to upwardly mobile professionals and young families.
- Perfect opportunity to establish a strong presence in the area.
- 5 min walk to Kingston-Throop Avenues transit stop A & C trains.



BED-STUY BROOKLYN

260 HALSEY STREET

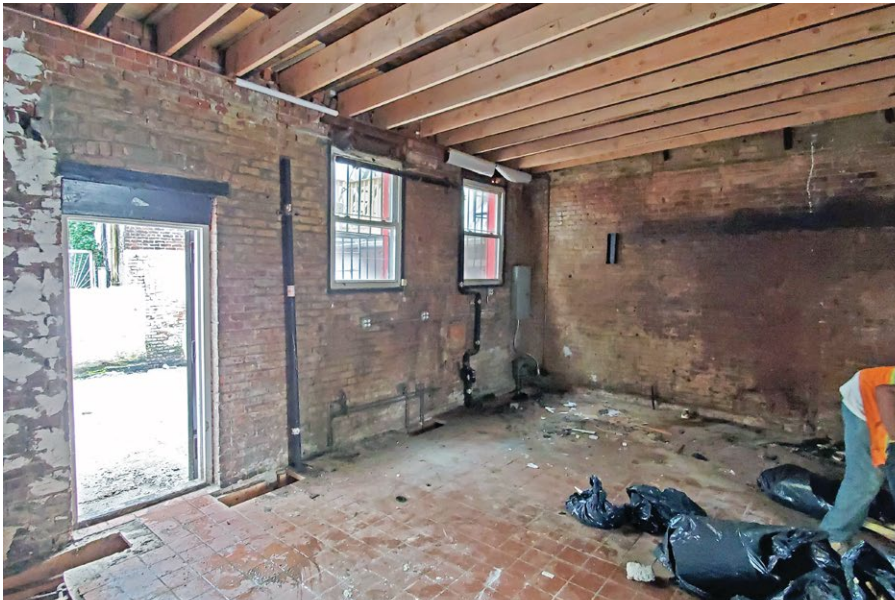
FLOORPLANS & DETAILS



BED-STUY BROOKLYN

260 HALSEY STREET

EXISTING CONDITION



BED-STUY BROOKLYN

260 HALSEY STREET

NEIGHBORHOOD DEMOGRAPHICS



183,985

POPULATION
WITHIN 1-MILE
RADIUS



36 Years

AVERAGE
POPULATION
AGE



9.53%

POPULATION
GROWTH
SINCE 2010



\$72,638

AVERAGE HHI
WITHIN 1-MILE
RADIUS



3,918

TOTAL BUSINESSES
WITHIN 1-MILE
RADIUS



\$1.4 bn

ANNUAL SPENDING
WITHIN 1-MILE
RADIUS

BED-STUY BROOKLYN

260 HALSEY STREET

NEIGHBORHOOD & TRANSPORTATION

NEIGHBORHOOD TENANTS

- Lovers Rock
- Peaches HotHouse
- Eugene & Company
- Nagle's Bagels
- Brooklyn Kettle
- WARUDE
- Bed-Vyne Wine & Spirits
- The Narativ
- The Brownstone
- Potomac Playground
- True Taste Kitchen
- Fish & Amp Chips
- Bed-Vyne Cocktail
- H2 Salon
- Fulton Ale House
- A Gusto
- Zion Gallery
- Blink Fitness
- Cozy Coffee
- Soldier
- Citibank
- Tomkins Deli Grocery
- Adels International Supermarket

TRANSPORTATION

- 5 Min Walk at Kingston-Throop Avenues (0.3 mi)
- 9 Min Walk at Nostrand Avenue (0.4 mi)
- 14 Min Walk at Bedford-Nostrand Avenues (1 mi)



BED-STUY BROOKLYN

260 HALSEY STREET

CONTACT



DAVID DUBINSKY
718-308-7111
david.d@exrny.com

