

GRAND
CENTRAL

NEW YORK
NY

370 LEXINGTON AVENUE



SPACE DETAILS

LOCATION

West block between East 40th and 41st Streets

APPROXIMATE SIZE

Ground Floor 1,532 SF

CEILING HEIGHT

Ground Floor 12 FT

FRONTAGE

20 FT on Lexington Avenue

TERM

Long term

POSSESSION

Immediate

SITE STATUS

Formerly Pro Health Pharmacy

NEIGHBORS

Maison Kayser, Pret A Manger, Zucker's Bagels, Num Pang Kitchen, Juice Generation and Starbucks

COMMENTS

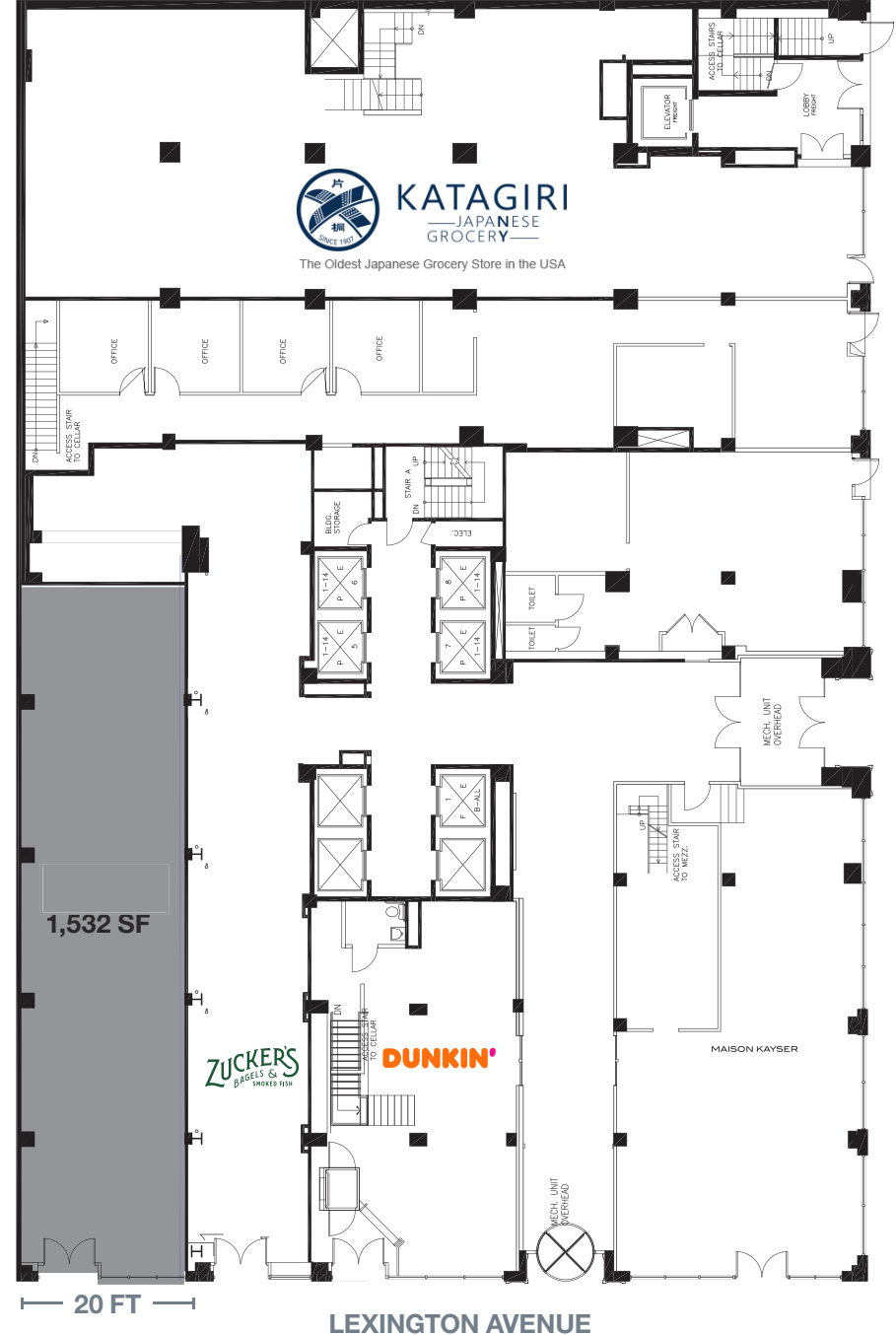
All uses considered

At the base of a 300,000-SF office building

Steps from Grand Central Terminal

In close proximity to the subway lines servicing the **4** **5** **6** **7** **S**

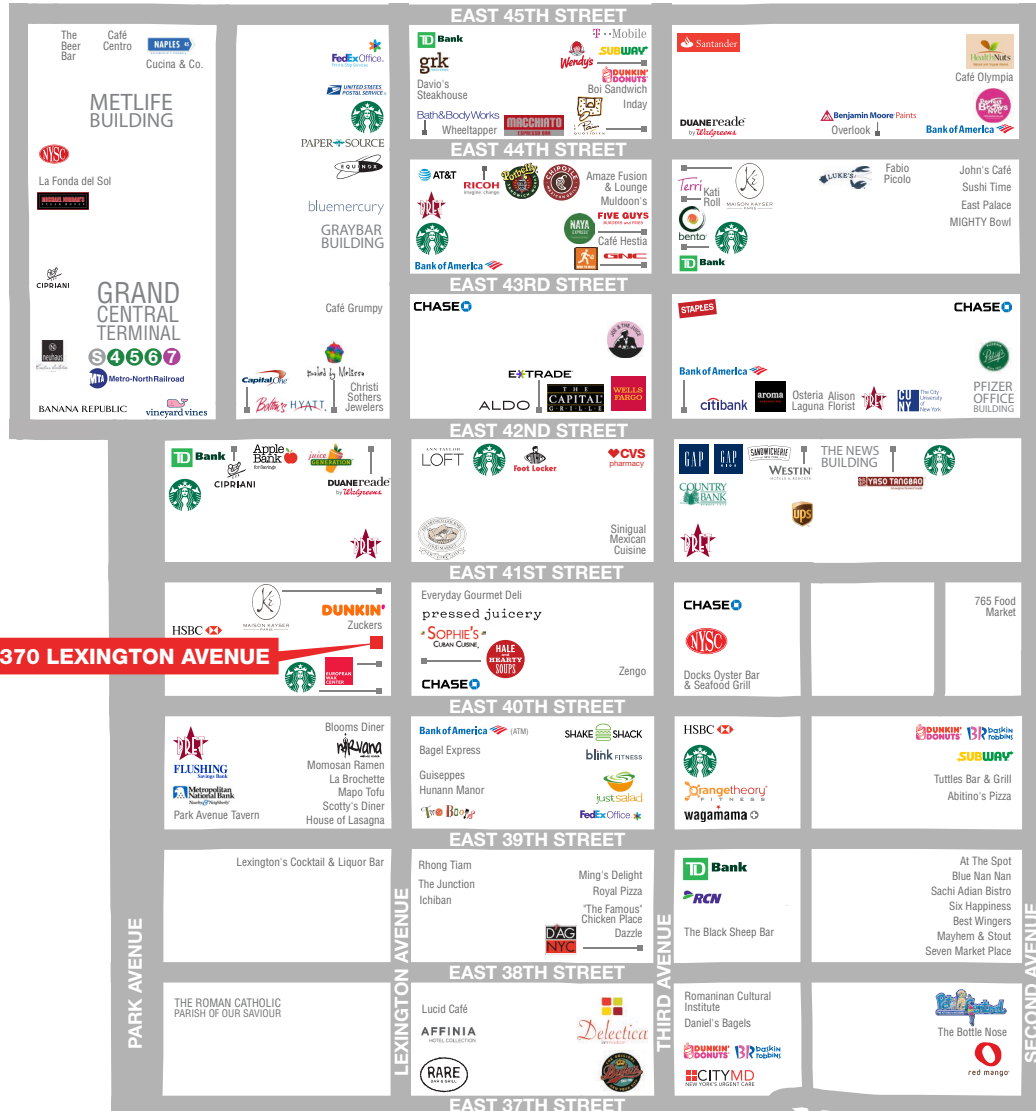
GROUND FLOOR



EAST 41ST STREET

LEXINGTON AVENUE

AREA RETAIL



➕ COMING SOON

CONTACT EXCLUSIVE AGENTS

MICHAEL COHEN
212.916.3374
michaelryan.cohen@ngkf.com

CONNOR HOLLENBAUGH
212.916.2937
connor.hollenbaugh@ngkf.com

ARIEL SCHUSTER
212.331.0132
ariel.schuster@ngkf.com



NGKF.COM

© 2019 NEWMARK KNIGHT FRANK RETAIL. The information contained herein has been obtained from sources deemed reliable but has not been verified and no guarantee, warranty or representation, either express or implied, is made with respect to such information. Terms of sale or lease and availability are subject to change or withdrawal without notice.