

### PLUM CREEK // CARMEL BUILD TO SUIT

#### LEASE RATE

TBD

#### AVAILABLE SF

UP TO 9,000 SF



- + Build to Suit Site
- + Class A Medical Office / General Office
- + Convenient curbside parking
- + Excellent access from 146th Street & Hazel Dell Parkway

**TOM OSBORNE, SIOR**  
Principal  
O 317.663.6543  
C 317.258.0179  
tom.osborne@rcre.com

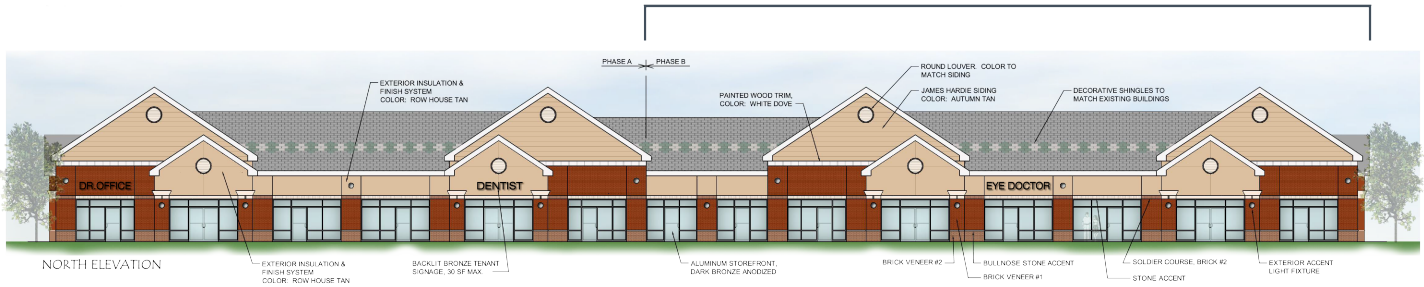
**KIM HARTMAN, CPM**  
Senior Vice President  
O 317.663.6562  
C 317.716.5895  
kim.hartman@rcre.com

# PLUM CREEK // BUILD TO SUIT

14555 C HAZEL DELL PKWY, CARMEL, IN 46033



## NEW CONSTRUCTION



# PLUM CREEK // BUILD TO SUIT

14555 C HAZEL DELL PKWY, CARMEL, IN 46033

