

**WEST HARTFORD,
CONNECTICUT**

FOR SALE

SullivanHayes
N O R T H E A S T

www.sullivanhayesne.com
ph. 860.677.5252



West Hartford, Connecticut
18 Raymond Road

- Rare opportunity to buy land in the center of West Hartford
- Abuts Whole Foods parking lot
- Strong area demographics

Location 41.761916°, -72.739422°

Size .21 acre

Price Asking \$600,000

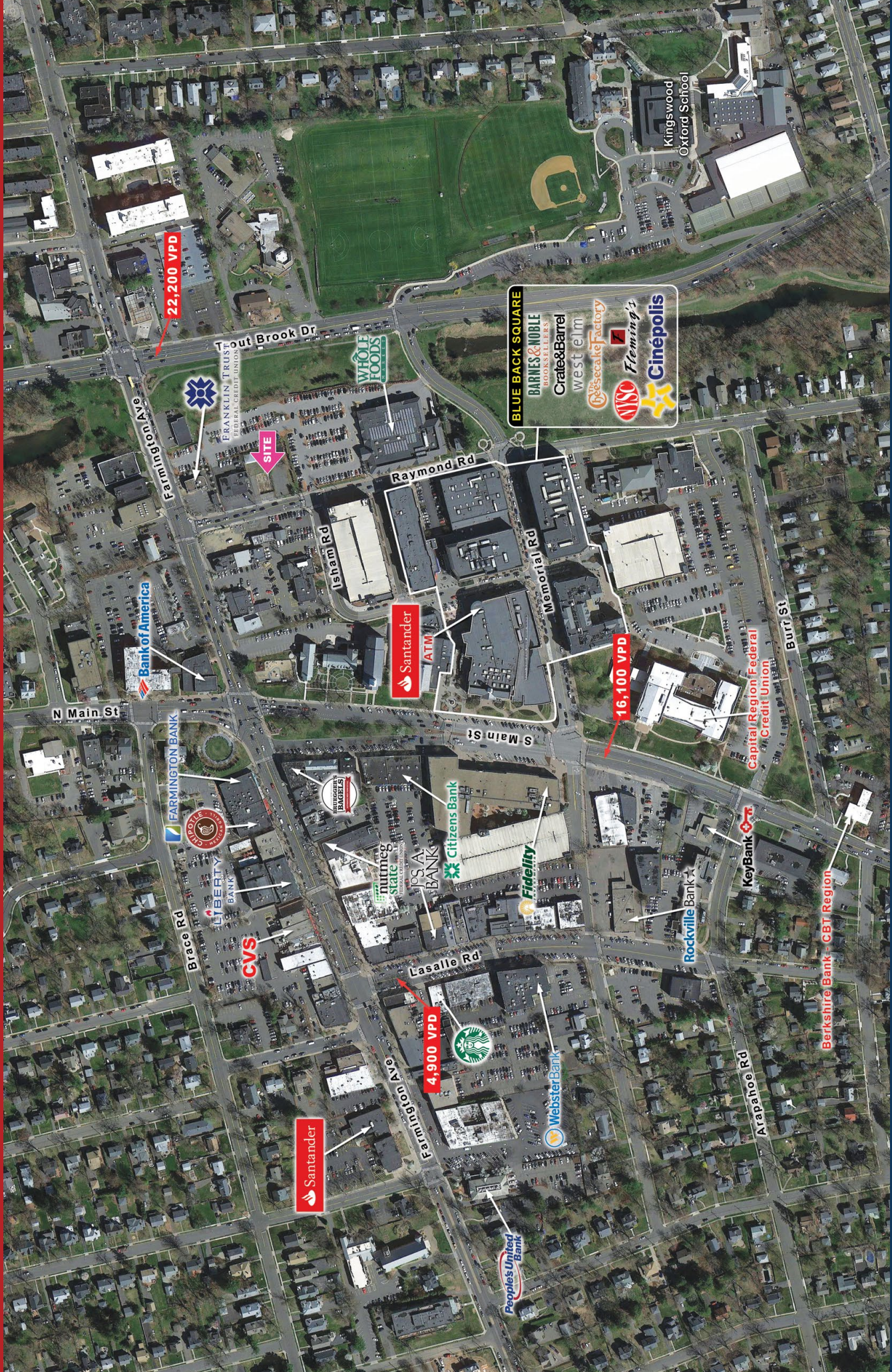
Area Retail Whole Foods, Crate&Barrel, Barnes & Noble, The Cheesecake Factory

Traffic Counts 18,200 VPD at Trout Brook Dr

Demographics	1 Mile	2 Miles	3 Miles
Population	17,769	58,788	127,358
Households	7,926	25,345	51,354
Avg. HH Income	\$131,642	\$114,767	\$95,422
Daytime Pop.	16,332	46,194	149,651

Contact Timothy McNamara
(860) 470-1977
tmcnamara@shcne.com

West Hartford, Connecticut 18 Raymond Road



22,200 VPD

SITE

4,900 VPD

16,100 VPD

BLUE BACK SQUARE
BARNES & NOBLE BOOKS & MORE
Crate & Barrel
west elm
Bebe's Fabric Factory
WIS
Fleming's
Cinepolis