

# 1120 LAKE STREET

DOWNTOWN, OAK PARK, IL

16,400 LAKE STREET RETAIL  
WITH BLACK IRON



16,400 SF LAKE STREET RETAIL WITH BLACK IRON

# 1114-1126 LAKE STREET

Downtown | Oak Park, IL

SITE  
PLAN

## SPACE AVAILABLE

Up to 16,400 SF (Divisible) - Black Iron Existing

## SITE SUMMARY

- Highly visible ground floor retail/restaurant space with existing Black Iron
- Prime location in Downtown Oak Park between Trader Joe's and new small format Target
- Located between two public parking facilities offering over 1,600 free short-term spaces
- One block east of 50,000 VPD intersection of Harlem/Lake, and one block north of CTA Green Line & Oak Park Metra Commuter Rail Station
- Steps away from several new development projects adding over 1,000 luxury residential units to downtown Oak Park

## AREA TENANTS



## DEMOGRAPHICS PROVIDED BY OAK PARK ECONOMIC DEVELOPMENT

### FASTEST GROWING SEGMENT

Young City Solos  
Urban Edge

### LARGEST SEGMENT

Thriving Boomers  
Full Pockets

### 2ND LARGEST SEGMENT

Booming with Confidence  
Silver Sophisticates

### 20 MIN WALK

POPULATION DENSITY

34,400

AVERAGE HH INCOME

\$107,359

MEDIAN AGE

40.6

BACHELORS OR HIGHER

65%

WHITE COLLAR/BLUE COLLAR

85% / 15%

### 10 MIN DRIVE

225,300

\$77,266

36.8

30%

65% / 35%

### 3 MILE TRADE AREA

281,911

\$78,059

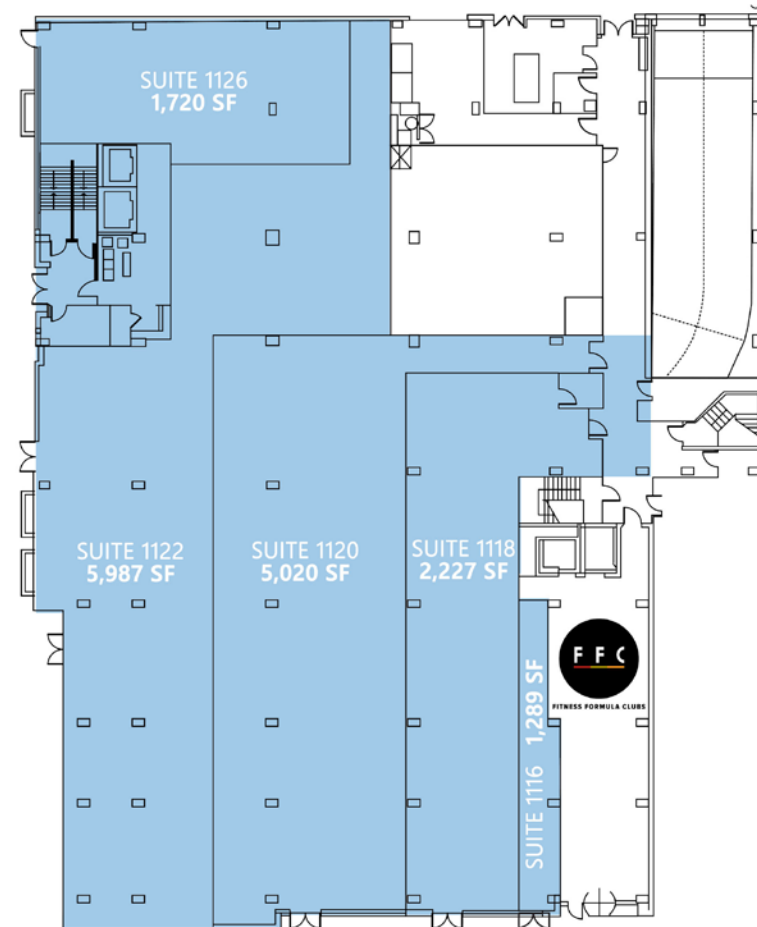
34.8

30%

60% / 40%



1,213 PUBLIC SPACES



LAKE STREET

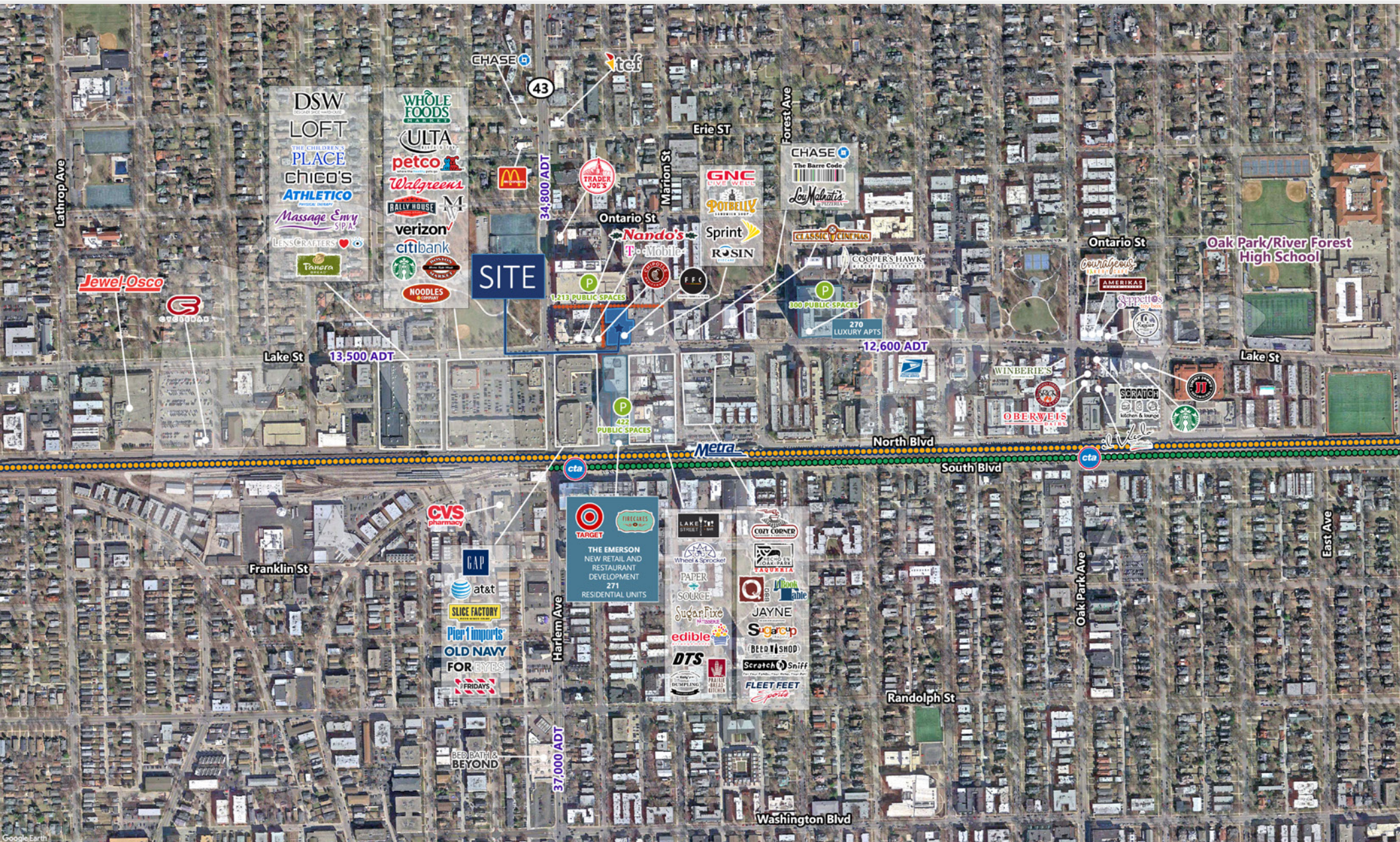
A·R·C  
REAL ESTATE



16,400 SF LAKE STREET RETAIL WITH BLACK IRON

# 1114-1126 LAKE STREET

Downtown | Oak Park, IL



## CONTACT

Matt Cavanagh  
matt@arcgrp.com  
(630) 908-5694

© 2019 A-R-C Real Estate. All information is from sources believed reliable, not independently verified, and thus subject to errors, omissions, and modifications such as price, listing, square footage, rates and commissions. All information, estimates and projections subject to change, market assumptions, unknown facts and conditions, and future potentialities. A-R-C Real Estate makes no express or implied representations or warranties, as facts and results may vary materially from all information, estimates and projections. All renderings presented are conceptual.

**A·R·C**  
REAL ESTATE