



### Property Highlights

- Zoned Residential in Kern County
- Former Kern County School site
- Adjacent to proposed Tejon Indian Casino



S Sabodan St

Stevens Dr

Wildflower St



**SITE**

Maricopa Hwy

**John A. Ritchie** • Senior Vice President • 661 616 3583 • johnr@asuassociates.com • CA RE #00900552  
11601 Bolthouse Drive Suite 110 • Bakersfield, CA 93311 • 661 862 5454 main • 661 862 5444 fax

# Property For Sale

10 Acres • Kern County • Mettler, CA

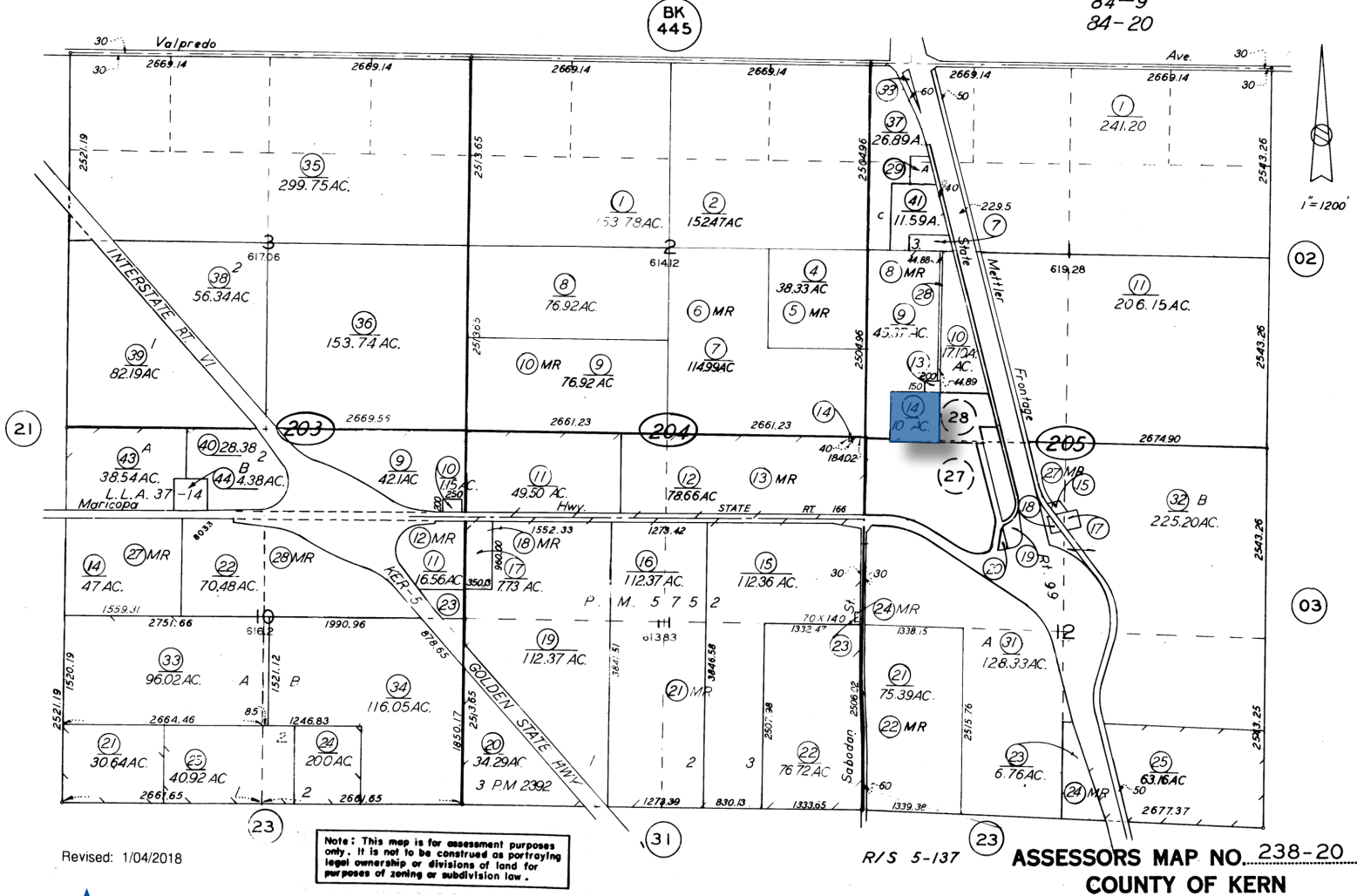
Parcel Map Number: 238-205-14

238-20

T. 11 N. R. 20 W.

SCHOOL DIST. 84-3  
84-9  
84-20

238-20



# Property For Sale

10 Acres • Kern County • Mettler, CA

## Aerial Map

