



Professional Office Building in Palo Alto

**350 CAMBRIDGE AVENUE
PALO ALTO, CA**

Area

Suite 50 (Garden Level): ±1,892 SF
- \$3.00 NNN; Available December 1, 2020

Suite 200: ±2,909 SF
- \$6.50 NNN; Available Now



Property Highlights

- Class A Building in California Avenue Business District
- Underground Parking (Suite 50 – One Reserved Stall; Suite 200 – Two Reserved Stalls) and Adjacent City Parking Structure
- Elevator Served
- One Block to Caltrain and Numerous Restaurants/Amenities
- Flexible Lease Terms
- Low Expenses: \$1.15 Excluding Palo Alto Utilities
- Call Agents to Tour

For information, please contact:

Wayne Kumagai

Executive Managing Director

t 650-688-8505

wkumagai@ngkf.com

CA RE License #01136673

John McKenna

Senior Managing Director

t 650-688-8548

jmckenna@ngkf.com

CA RE License #01276576

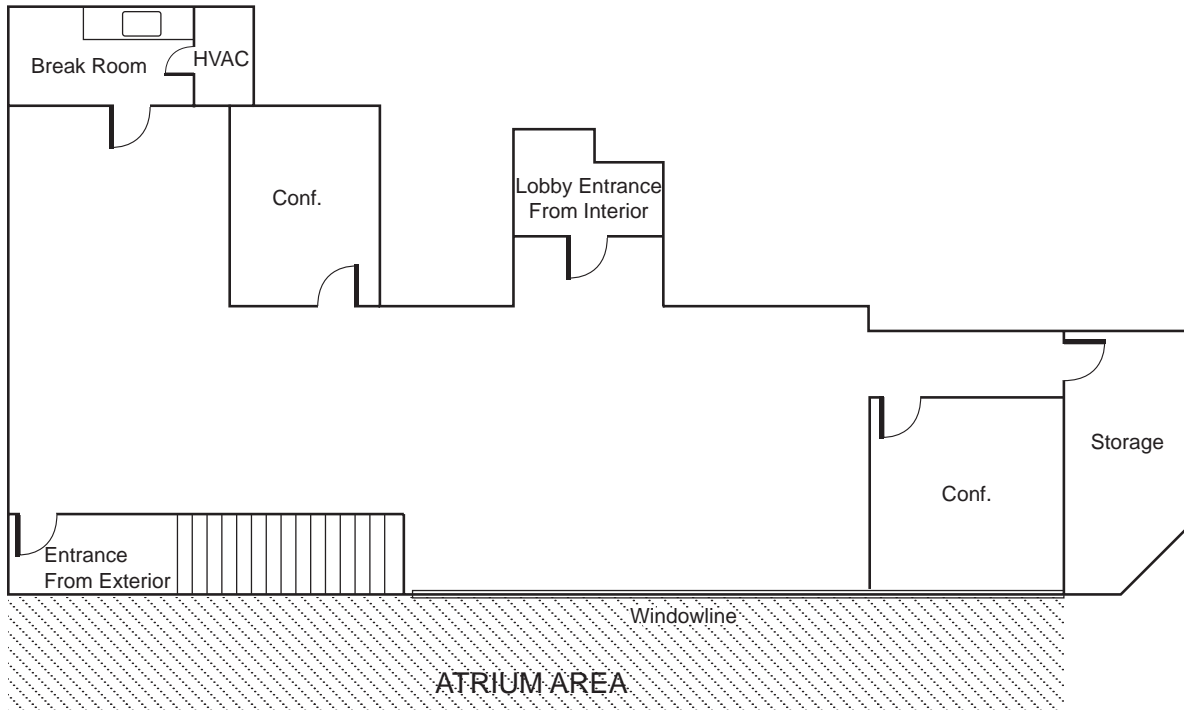
nrmk.com

NEWMARK

The distributor of this communication is performing acts for which a real estate license is required. The information contained herein has been obtained from sources deemed reliable but has not been verified and no guarantee, warranty or representation, either express or implied, is made with respect to such information. Terms of sale or lease and availability are subject to change or withdrawal without notice. 15.0474.11/20



Suite 50: ±1,892 SF



For information, please contact:

Wayne Kumagai

Executive Managing Director

t 650-688-8505

wkumagai@ngkf.com

CA RE License #01136673

John McKenna

Senior Managing Director

t 650-688-8548

jmckenna@ngkf.com

CA RE License #01276576

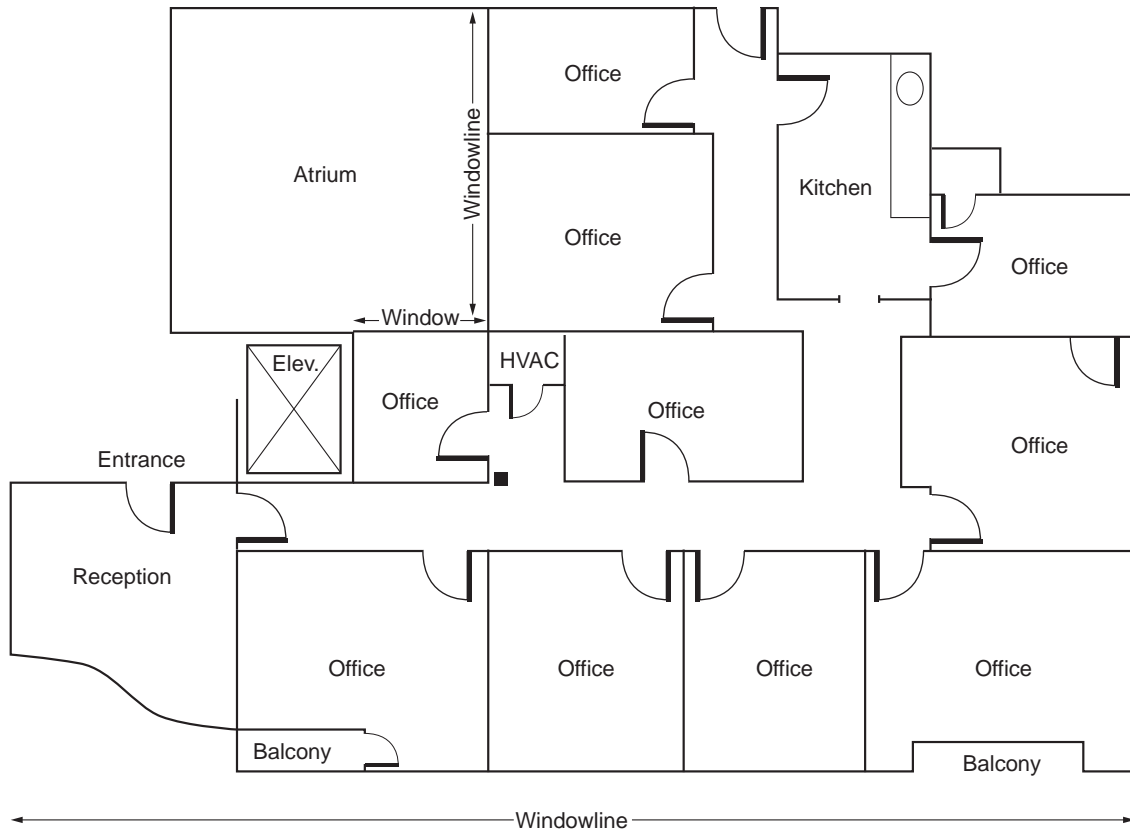
nmrk.com

NEWMARK

The distributor of this communication is performing acts for which a real estate license is required. The information contained herein has been obtained from sources deemed reliable but has not been verified and no guarantee, warranty or representation, either express or implied, is made with respect to such information. Terms of sale or lease and availability are subject to change or withdrawal without notice. 15.0474.11/20



Suite 200: ±2,909 SF



For information, please contact:

Wayne Kumagai
Executive Managing Director
t 650-688-8505
wkumagai@ngkf.com
CA RE License #01136673

John McKenna
Senior Managing Director
t 650-688-8548
jcmckenna@ngkf.com
CA RE License #01276576

nmrk.com

NEWMARK

The distributor of this communication is performing acts for which a real estate license is required. The information contained herein has been obtained from sources deemed reliable but has not been verified and no guarantee, warranty or representation, either express or implied, is made with respect to such information. Terms of sale or lease and availability are subject to change or withdrawal without notice. 15.0474.11/20