

44

East 8th Street

Southeast Corner of Greene Street

6

W

R

Astor Place

NEW YORK UNIVERSITY



Retail Space Available for Lease

As exclusive agents, we are pleased to offer the following space for lease:

Approximate Size:

1,600 SF – Ground Floor
900 SF – Basement

Approximate Frontage:

44 Feet Wraparound

Possession:

Immediate

Asking Rent:

Upon Request

Neighboring Tenants:

Fresh & Co, Dunkin Donuts, Just Salad, Chipotle, Joe Coffee, Subway, La Famiglia, Starbucks, Pure Green, Sweetgreen, Cozy Soup & Burger, Pret A Manger, and more...

Comments:

- Highly visible corner location steps from NYU and Astor Place
- Extremely busy retail corridor featuring student, residential, and tourist traffic
- Food use allowed – no venting

For More Information,
Please Contact:

Stu Morden

212.372.2496
smorden@ngkf.com

Ross Kaplan

212.850.5418
rkaplan@ngkf.com

Lucas Kooyman

212.372.2384
lkooyman@ngkf.com

**Newmark Grubb
Knight Frank**

Retail

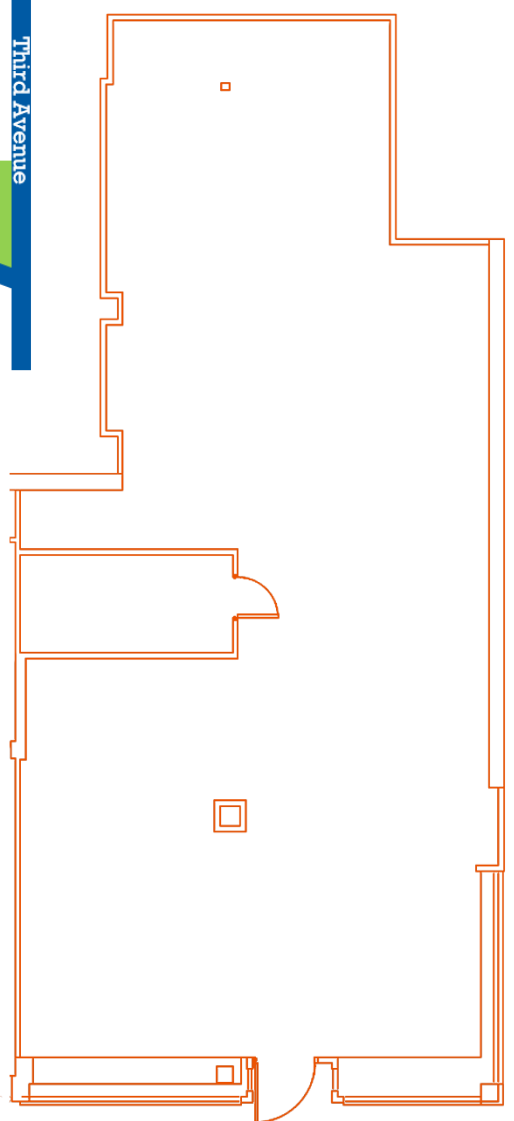
www.ngkf.com/retail





East 8th Street

Southeast Corner of Greene Street



6
W
R
Astor Place

Greene Street

East 8th Street

For More Information,
Please Contact:

Stu Morden

212.372.2496

smorden@ngkf.com

Ross Kaplan

212.850.5418

rkaplan@ngkf.com

Lucas Kooyman

212.372.2384

lkooyman@ngkf.com

**Newmark Grubb
Knight Frank**

Retail

www.ngkf.com/retail



The information contained herein has been obtained from sources deemed reliable but has not been verified and no guarantee, warranty or representation, either express or implied, is made with respect to such information. Terms of sale or lease and availability are subject to change or withdrawal without notice.