



2,311± sf - 19,078± sf Available

Opportunity

- 192,767± sf office park in South Orlando consisting of four single-story, free-standing buildings
- Abundant parking of up to 5.6/1,000 sf
- Ideal call center and support space
- Efficient floor plans
- Upgraded landscaping
- Building signage available
- Roving security guard Monday through Friday from 5:00 pm until 9:00 pm
- Grade level loading

Rate and Term

- \$13.00/sf NNN

For more information, please contact:

Nathan Eissler, CCIM, SIOR

Principal

D 407 440 6658

C 407 342 7494

nathan.eissler@avisonyoung.com

135 W Central Avenue

Suite 700

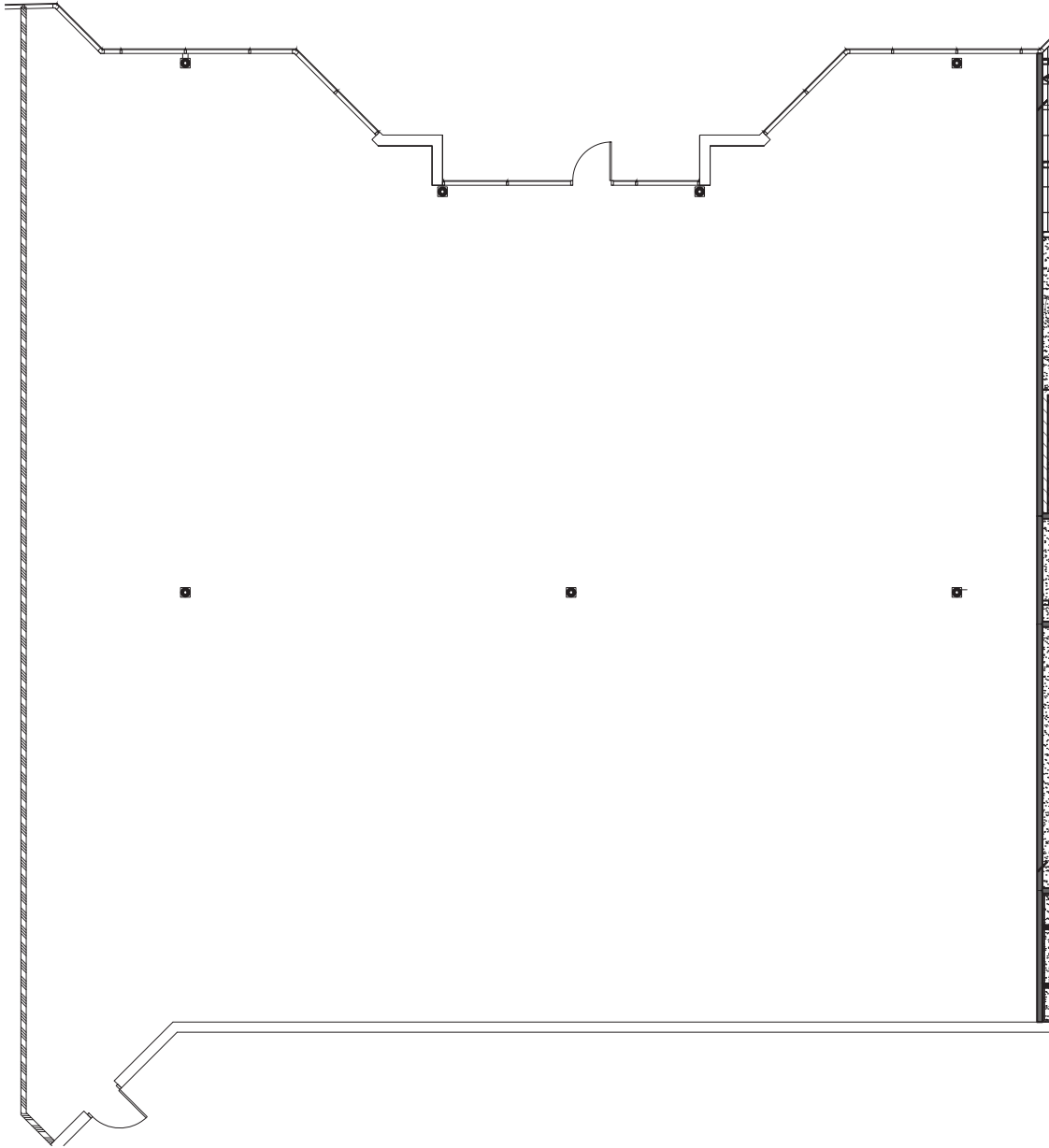
Orlando, FL 32801

407 219 3500

Building 6101
Suite 1130 - 5,729± sf

Lakefront I & II / 6101-6251 Chancellor Dr

*Shell Space

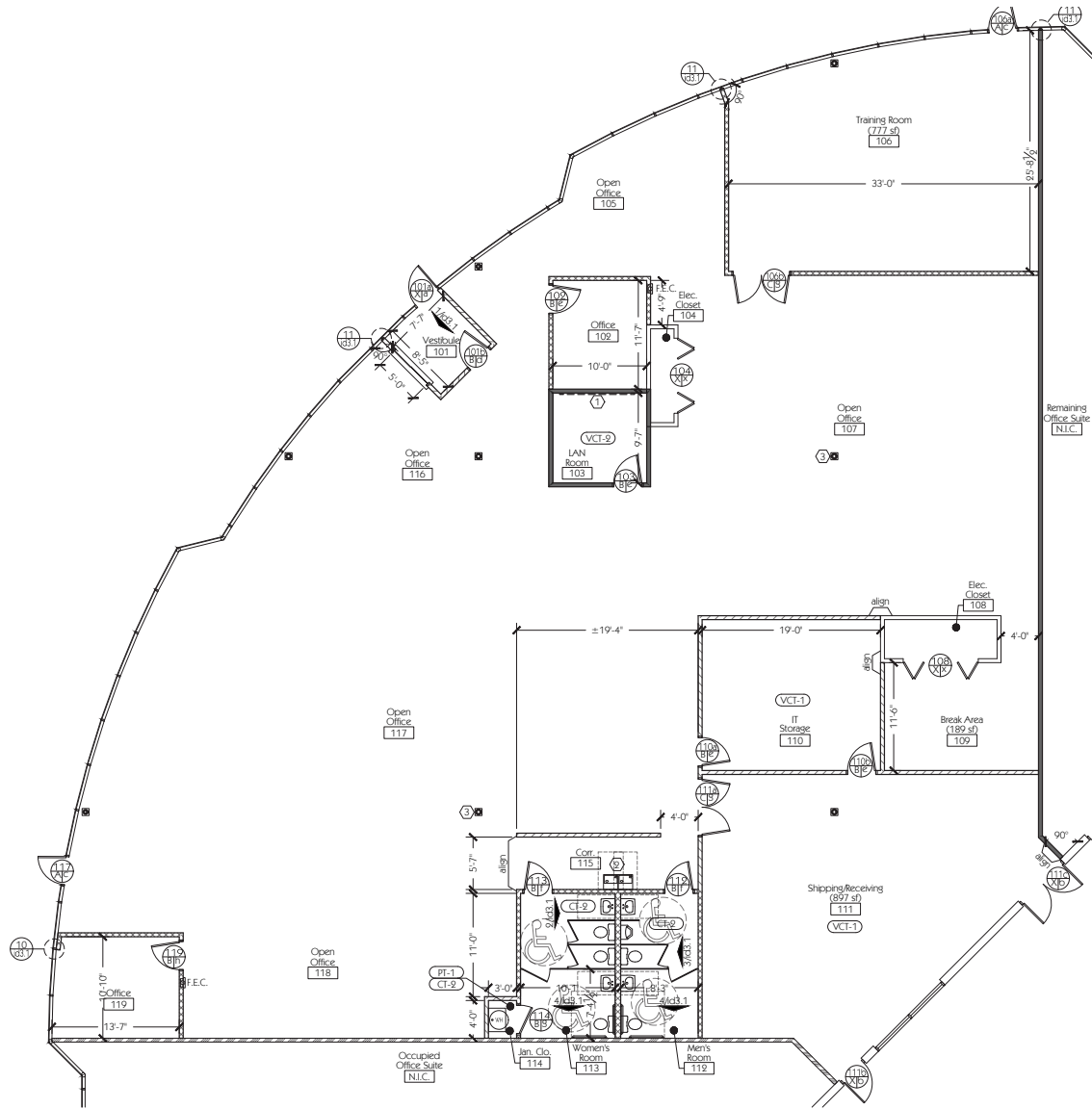


avisonyoung.com

Nathan Eissler, CCIM, SIOR, Principal
D 407 440 6658
C 407 342 7494
nathan.eissler@avisonyoung.com

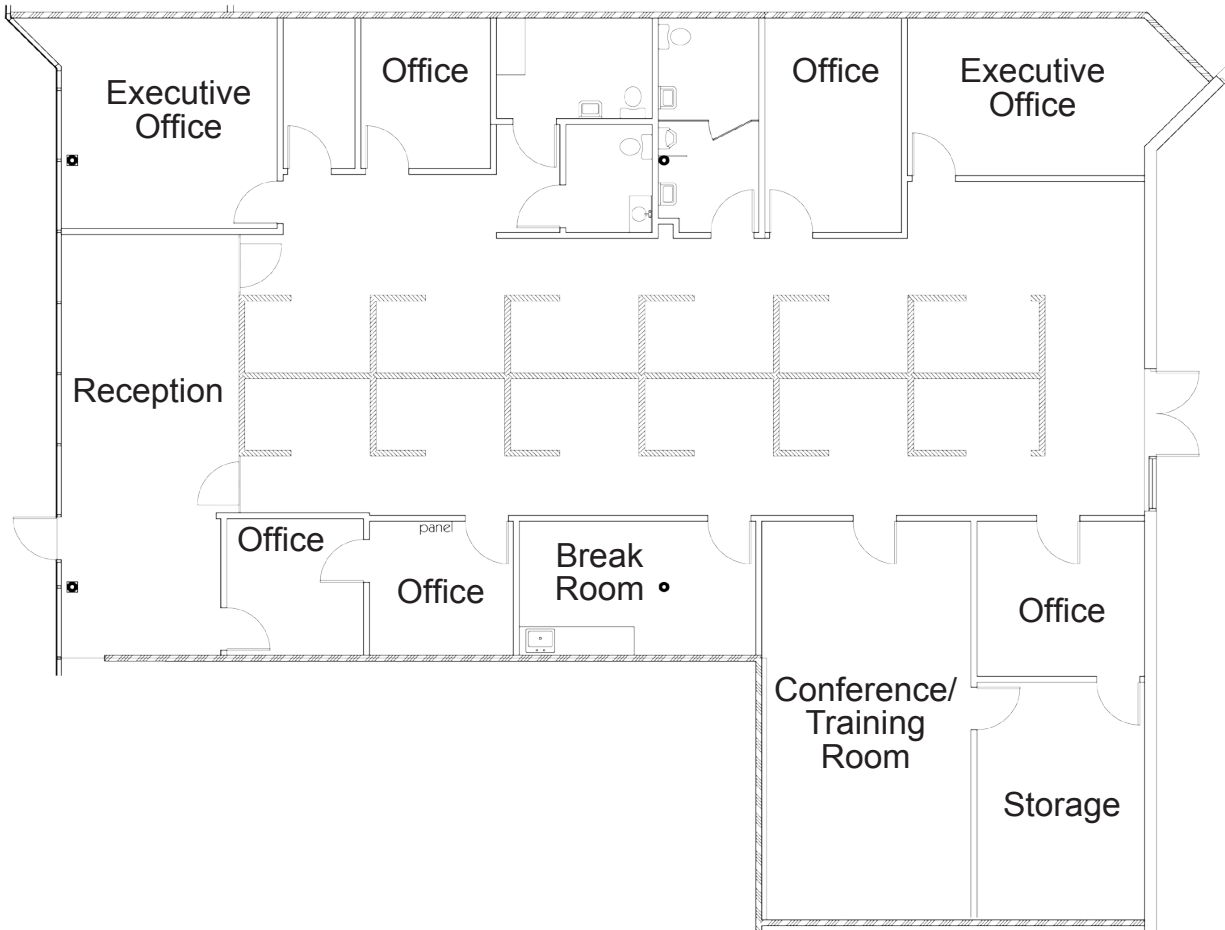
Building 6101
Suite 1140 - 8,500± sf
Available - 6/1/2021

Lakefront I & II / 6101-6251 Chancellor Dr



avisonyoung.com

Nathan Eissler, CCIM, SIOR, Principal
D 407 440 6658
C 407 342 7494
nathan.eissler@avisonyoung.com



avisonyoung.com

Nathan Eissler, CCIM, SIOR, Principal
D 407 440 6658
C 407 342 7494
nathan.eissler@avisonyoung.com

Building 6101
Suite 1175 - 2,311± sf

Lakefront I & II / 6101-6251 Chancellor Dr

***Shell Space**



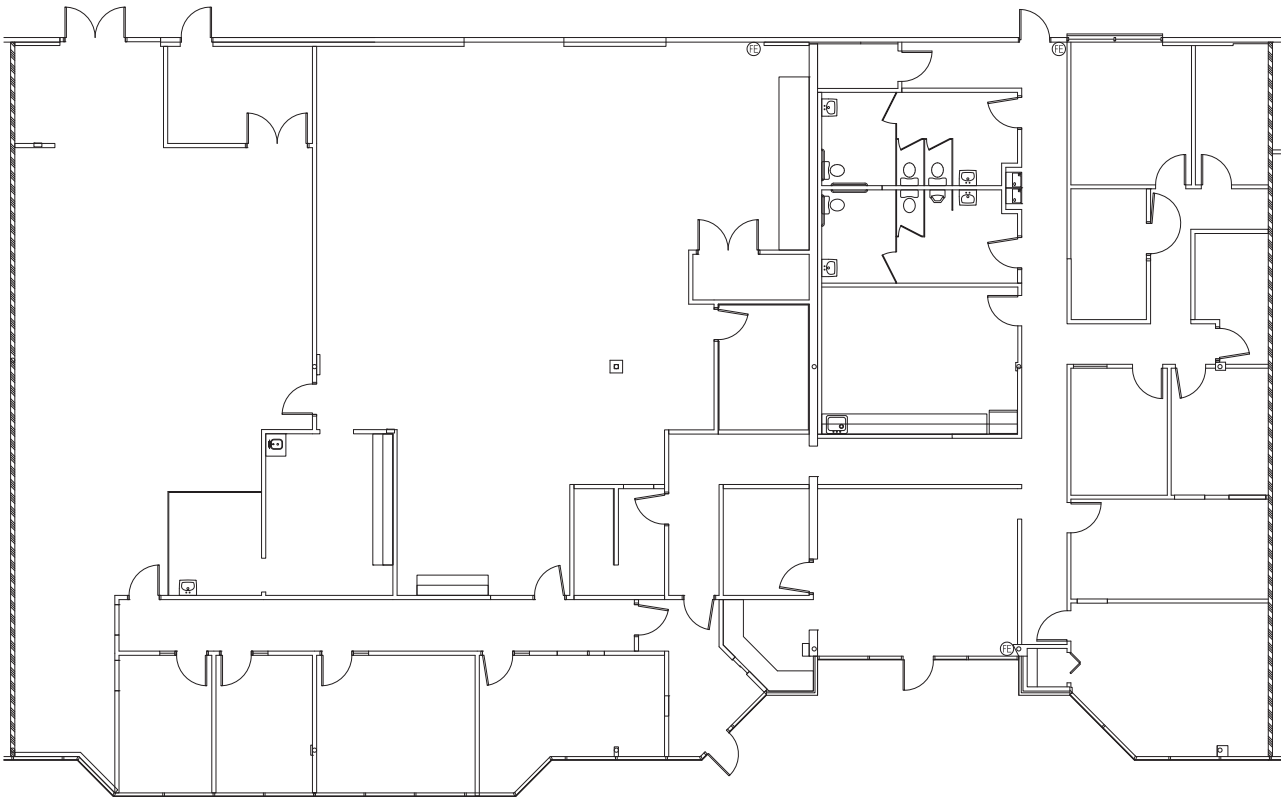
**AVISON
YOUNG**

avisonyoung.com

Nathan Eissler, CCIM, SIOR, Principal
D 407 440 6658
C 407 342 7494
nathan.eissler@avisonyoung.com

Building 6149
Suite 2775 - 8,817± sf

Lakefront I & II / 6101-6251 Chancellor Dr



avisonyoung.com

Nathan Eissler, CCIM, SIOR, Principal
D 407 440 6658
C 407 342 7494
nathan.eissler@avisonyoung.com

