

FOR LEASE

10111 E. 21st St. N., Wichita, Kansas



The Offices at Cranbrook

The Offices at Cranbrook are located in the best demographics in Northeast Wichita just East of 21st Street and Webb Road. This area includes Bradley Fair, medical office parks, financial specialists and law offices.

This property offers the newest Class A office space in this area. Tenants have the option to choose offices with a patio that overlook a pond. Pylon signage is also available.

Area Neighbors: Greystone Steak & Seafood, Baskin Robbins, Kwik Shop, Opti Life, Sunflower Bank, Commerce Bank, Emprise Bank and Dillons Marketplace.

Building 3

Space Available: 20,800 divisible SF
Space Details: \$30.00 TI Allowance
Lease Rate Type: Full Service

Building 4

Space Available: 2,545 SF
Space Details: \$30.00 TI Allowance
Lease Rate Type: NNN at \$7.25

Estimated Average House Hold Income:

1 Mile \$112,237
3 Miles \$86,557
5 Miles \$73,184



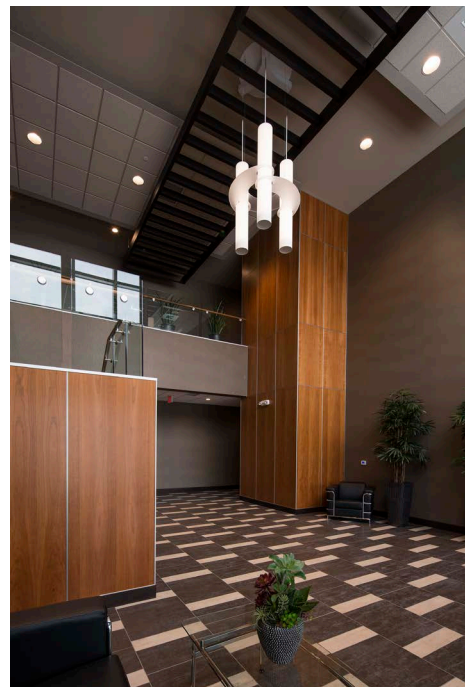
CHARLIE KING
charlie@occmgmt.com
T: 316-262-3331
C: 316-706-1583

8111 E. 32nd St. N., Suite 101
Wichita, KS 67226

www.occmgmt.com
occidental@occmgmt.com

PROPERTY PHOTOS

10111 E. 21st St. N., Wichita, Kansas



CHARLIE KING
charlie@occmgmt.com
T: 316-262-3331
C: 316-706-1583

8111 E. 32nd St. N., Suite 101
Wichita, KS 67226

www.occmgmt.com
occidental@occmgmt.com

PROPERTY PHOTOS

10111 E. 21st St. N., Wichita, Kansas



CHARLIE KING
charlie@occmgmt.com
T: 316-262-3331
C: 316-706-1583

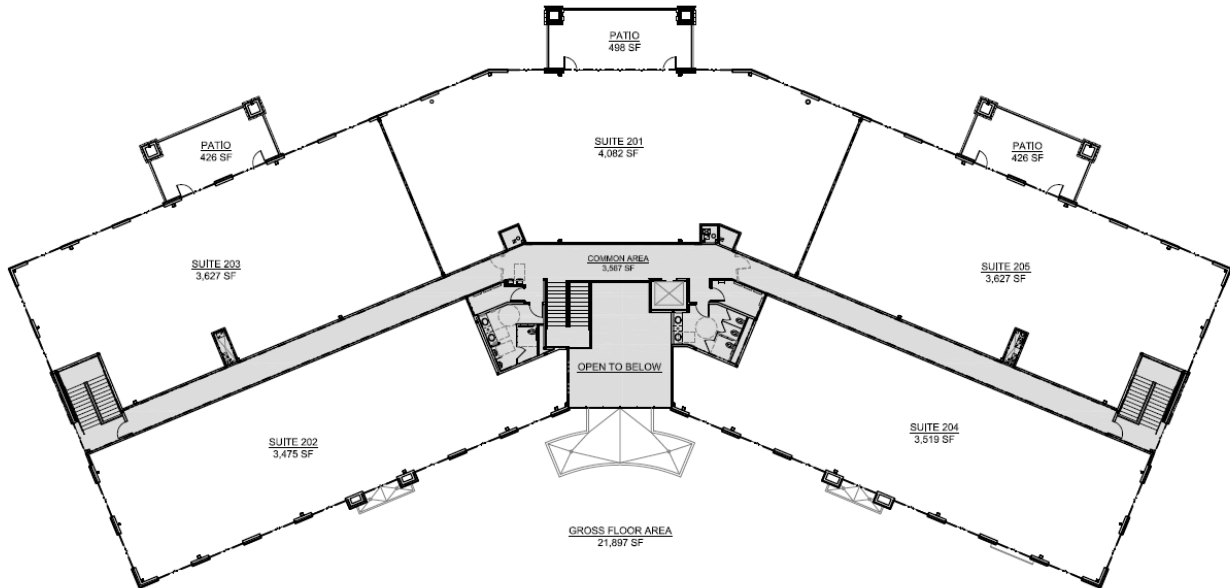
8111 E. 32nd St. N., Suite 101
Wichita, KS 67226

www.occmgmt.com
occidental@occmgmt.com

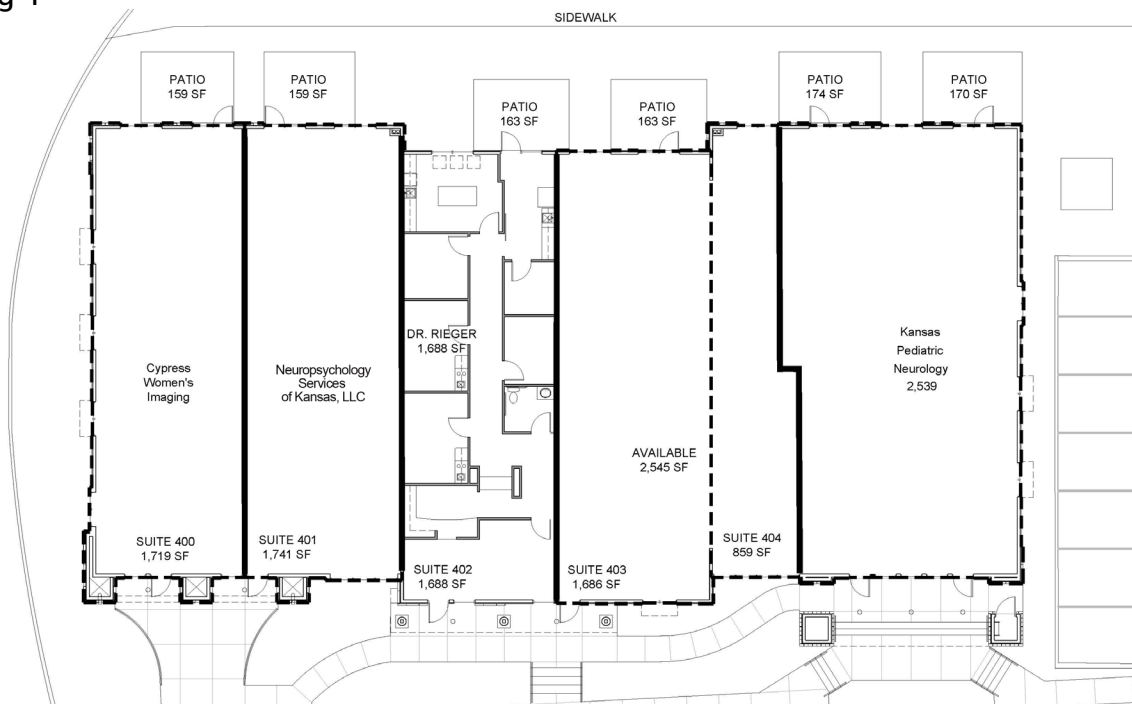
FLOOR PLANS

10111 E. 21st St. N., Wichita, Kansas

Building 3



Building 4



CHARLIE KING
charlie@occmgmt.com
T: 316-262-3331
C: 316-706-1583

8111 E. 32nd St. N., Suite 101
Wichita, KS 67226

www.occmgmt.com
occidental@occmgmt.com

AERIAL

10111 E. 21st St. N., Wichita, Kansas



CHARLIE KING
charlie@occmgmt.com
T: 316-262-3331
C: 316-706-1583

8111 E. 32nd St. N., Suite 101
Wichita, KS 67226

www.occmgmt.com
occidental@occmgmt.com