

# SWC Jackson & Bradshaw Rd ±3 Acres on Prime Corner

Sacramento, CA



## PROPERTY HIGHLIGHTS

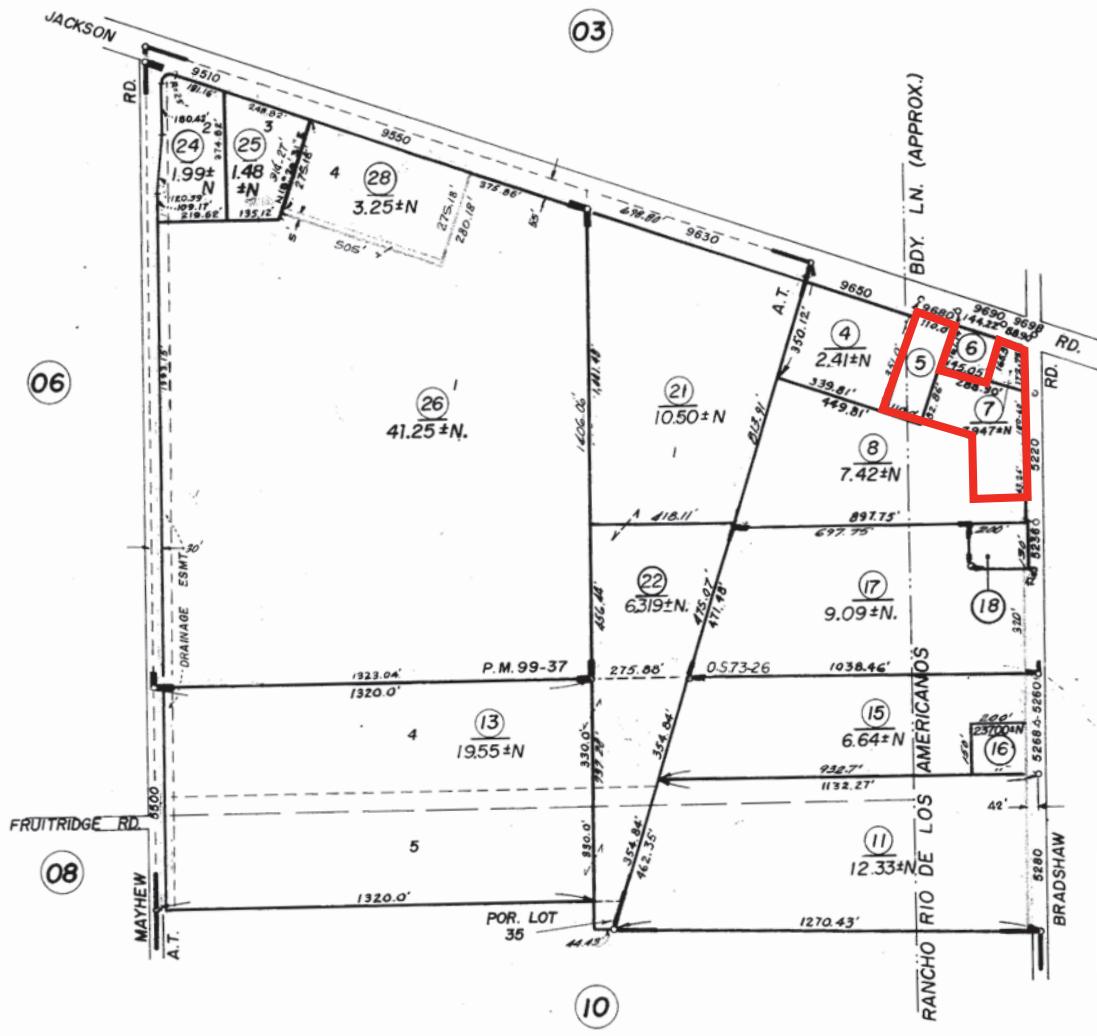
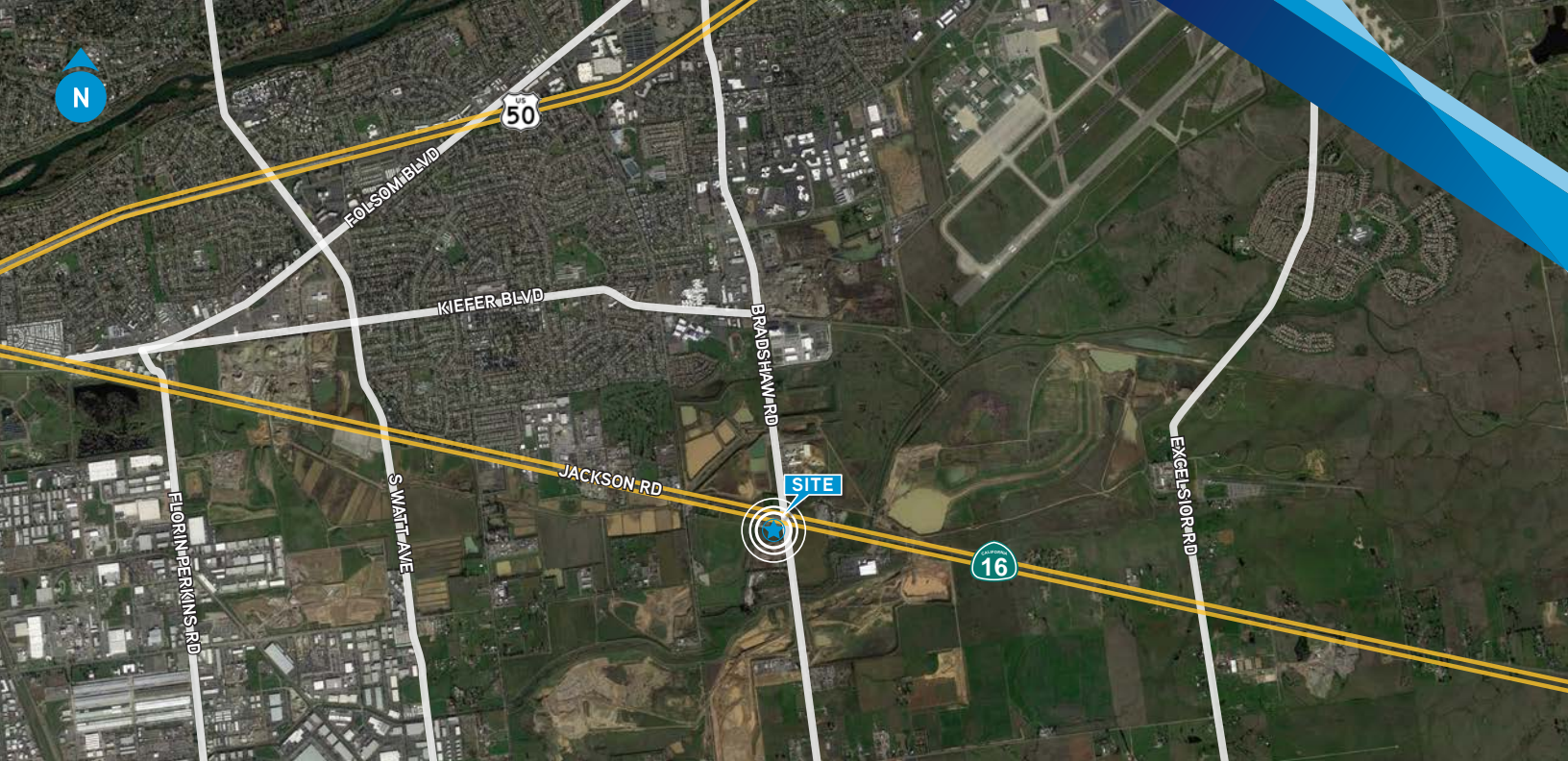
- » Premier location for a service station, mini mart, and fast food
- » Seller has some flexibility on modifying the dimensions of the proposed site
- » Zoning: GC - General Commercial
- » APN's: 063-0070-005, -007 & a portion of -008

Offered at **\$1,960,000**

### Steve Chamberlain

Executive Vice President  
+1 916 563 3037  
steve.chamberlain@colliers.com  
Lic. No. 00813856





This document has been prepared by Colliers International for advertising and general information only. Colliers International makes no guarantees, representations or warranties of any kind, expressed or implied, regarding the information including, but not limited to, warranties of content, accuracy and reliability. Any interested party should undertake their own inquiries as to the accuracy of the information. Colliers International excludes unequivocally all inferred or implied terms, conditions and warranties arising out of this document and excludes all liability for loss and damages arising there from. This publication is the copyrighted property of Colliers International and/or its licensor(s). Real estate officer license corporation identification number 01908588. ©2019. All rights reserved.