

FOR LEASE

LEE PLAZA

4746

11TH AVENUE NE

Seattle, WA 98105



www.cbre.com/Seattle

CBRE

FOR LEASE LEE PLAZA



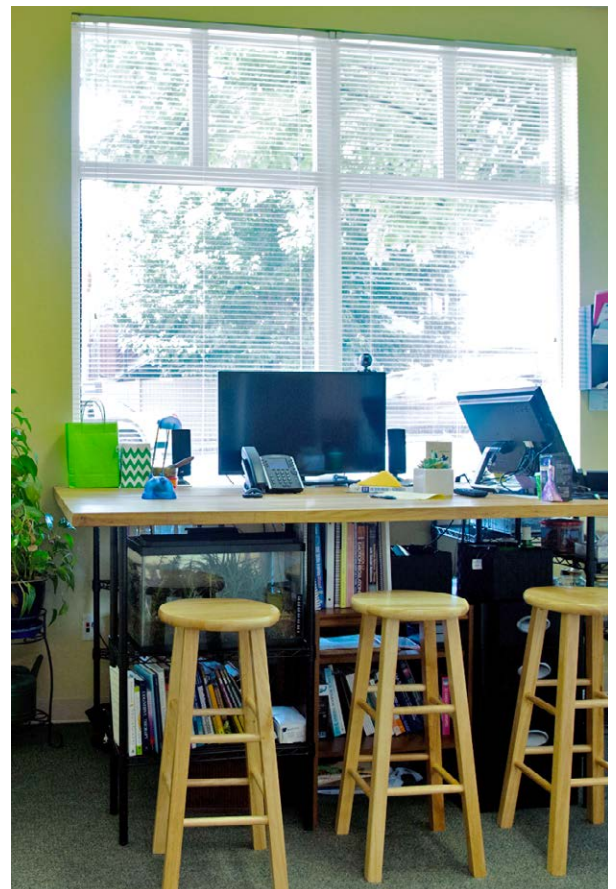
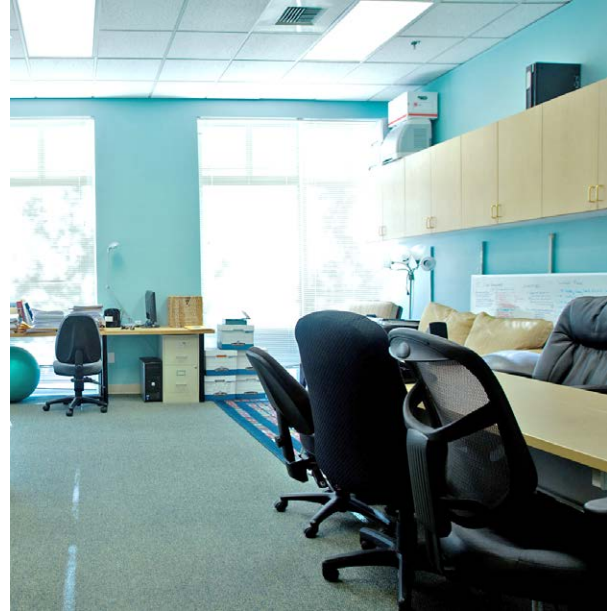
OFFICE FOR LEASE

SUITE 102 ±3,500 RSF

+ \$25.00 PSF/year, full service gross

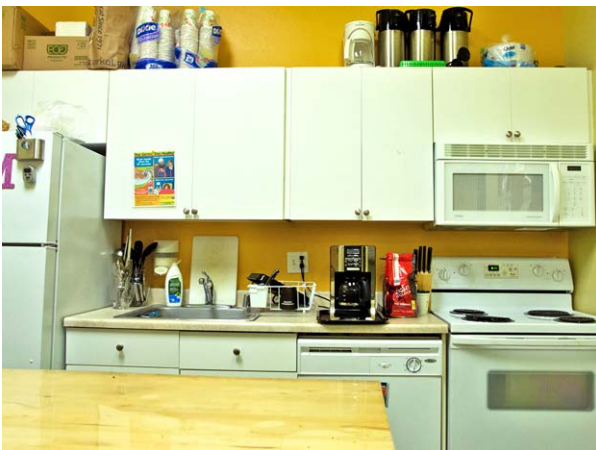
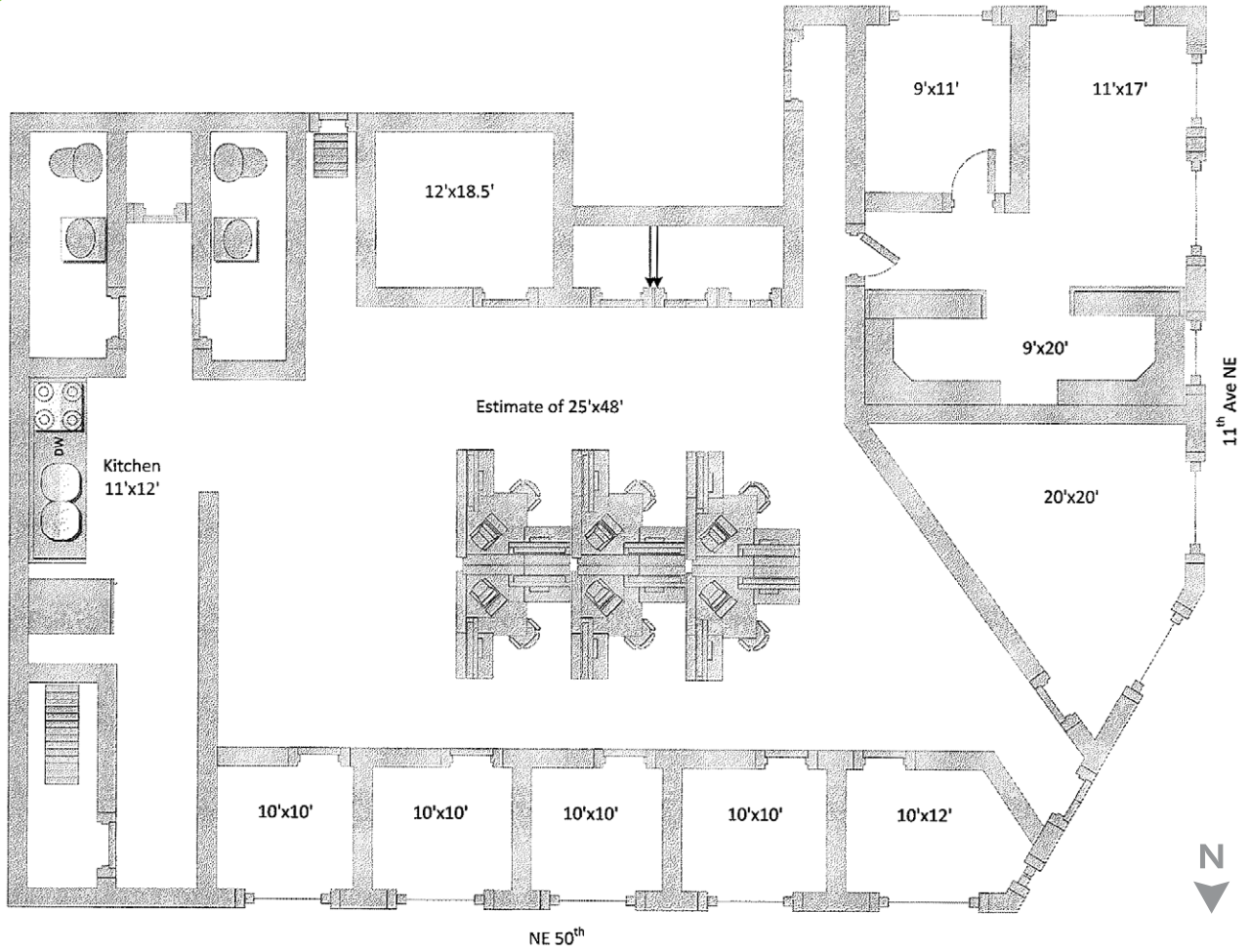
FEATURES

- + Great University District location
- + Covered on-site parking
- + Good street visibility
- + Private restrooms
- + Kitchenette
- + Conference room





FLOOR PLAN

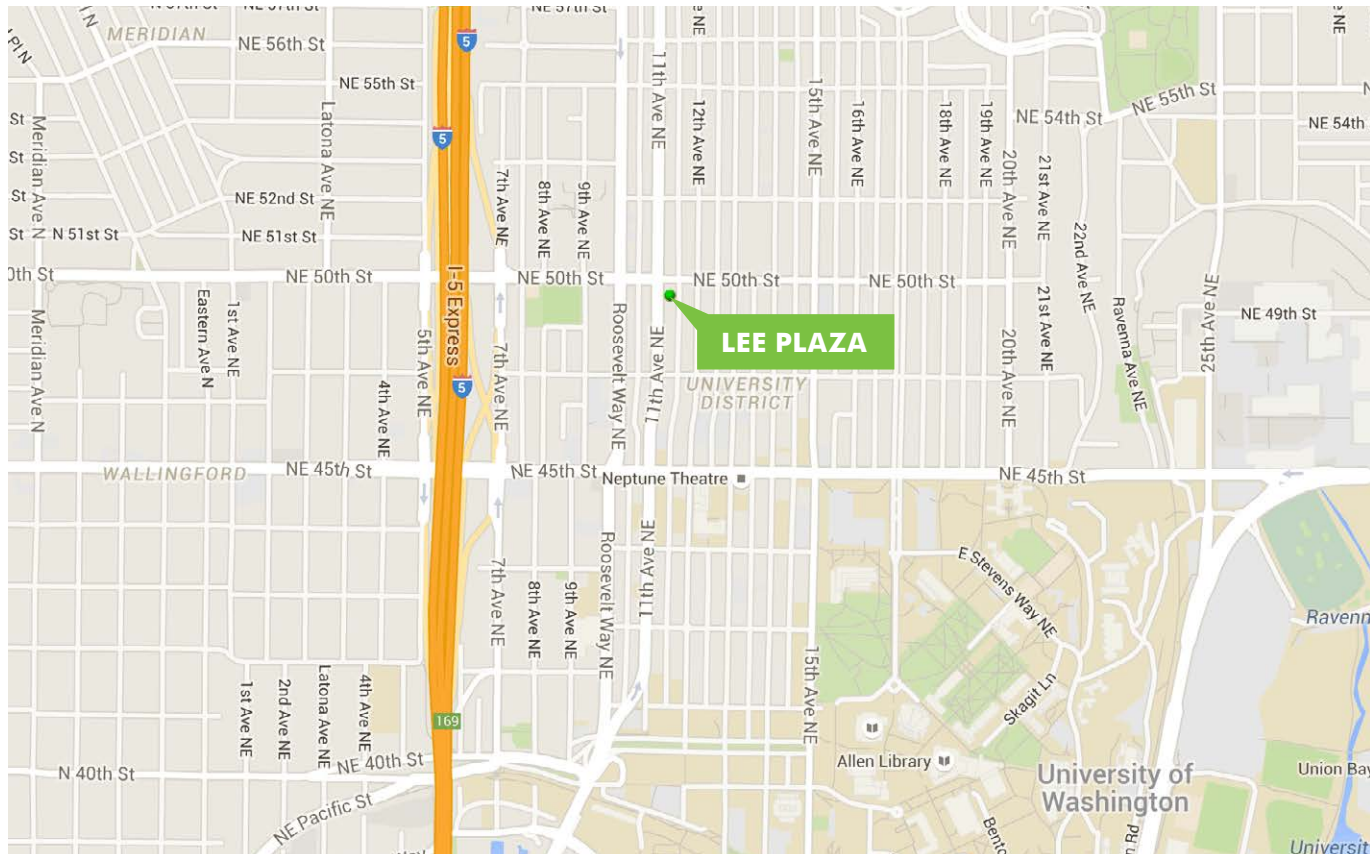


FOR LEASE LEE PLAZA

4746
11TH AVENUE NE
Seattle, WA 98105



LOCATION



CONTACT US

NATE FLIFLET

Senior Associate
+1 206 292 6119
nate.fliflet@cbre.com

NICK CARKONEN

Vice President
+1 206 292 6039
nick.carkonen@cbre.com

CBRE, Inc.
1420 5th Avenue
Suite 1700
Seattle, WA 98101

© 2015 CBRE, Inc. This information has been obtained from sources believed reliable. We have not verified it and make no guarantee, warranty or representation about it. Any projections, opinions, assumptions or estimates used are for example only and do not represent the current or future performance of the property. You and your advisors should conduct a careful, independent investigation of the property to determine to your satisfaction the suitability of the property for your needs. ejs 10-07-15

Photos herein are the property of their respective owners and use of these images without the express written consent of the owner is prohibited.