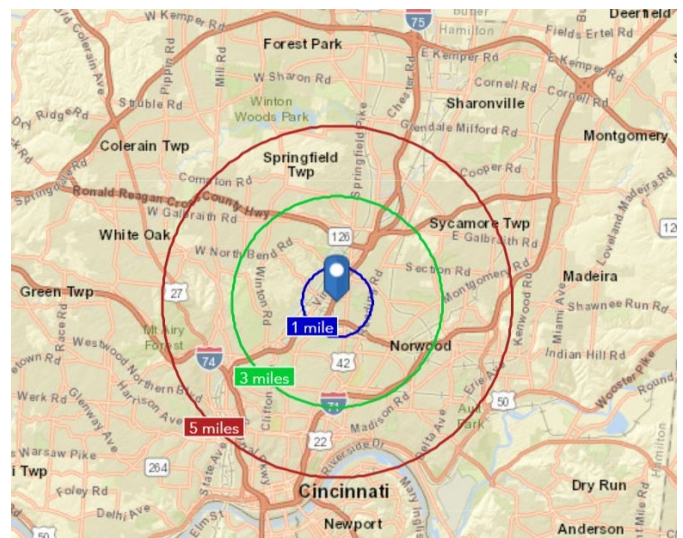




## PROPERTY HIGHLIGHTS

- 3,300 SF (Approx.) office space available for lease
- 100 free Surface Spaces (Shared with Owner) are available; Ratio of 6.25/1,000 SF. Note: A separate fenced lot may be used by tenant exclusively.
- Excellent Regional Highway Access to I-75 via Town Street and Paddock Road
- Co-Tenant: Jones The Florist
- Immediate occupancy



CONTACT FOR MORE INFO:

Lauri Stefanou  
Senior Vice President  
Direct: 513.842.9504  
Mobile: 513.604.1414  
lstefanou@equity.net



455 Delta Avenue, Suite 200  
Cincinnati, OH 45226



brokerage

Commercial Real Estate Solutions®

**FOR LEASE**

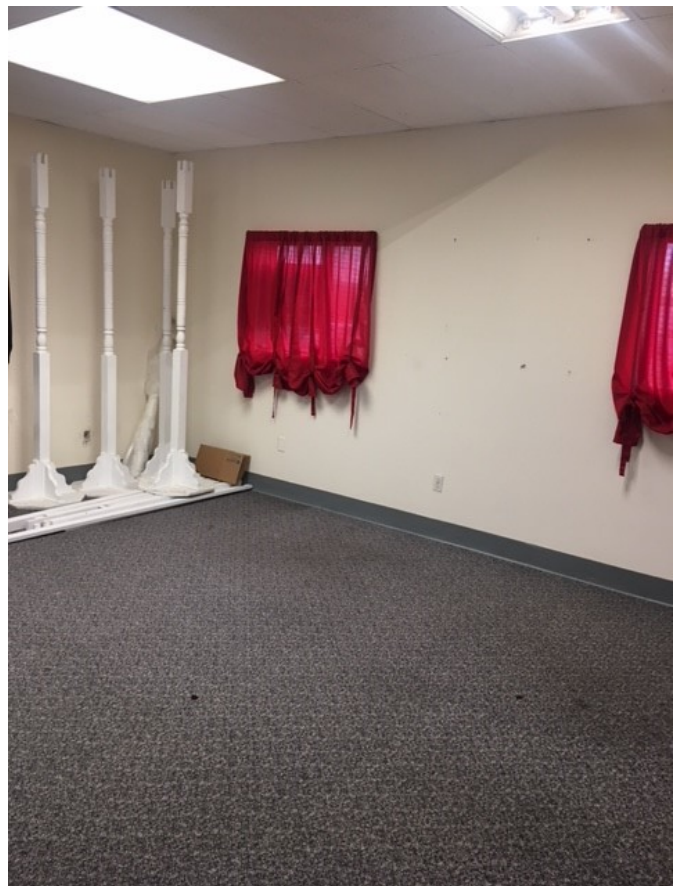
5179 Fishwick Drive  
Cincinnati, OH 45216





**FOR LEASE**

5179 Fishwick Drive  
Cincinnati, OH 45216



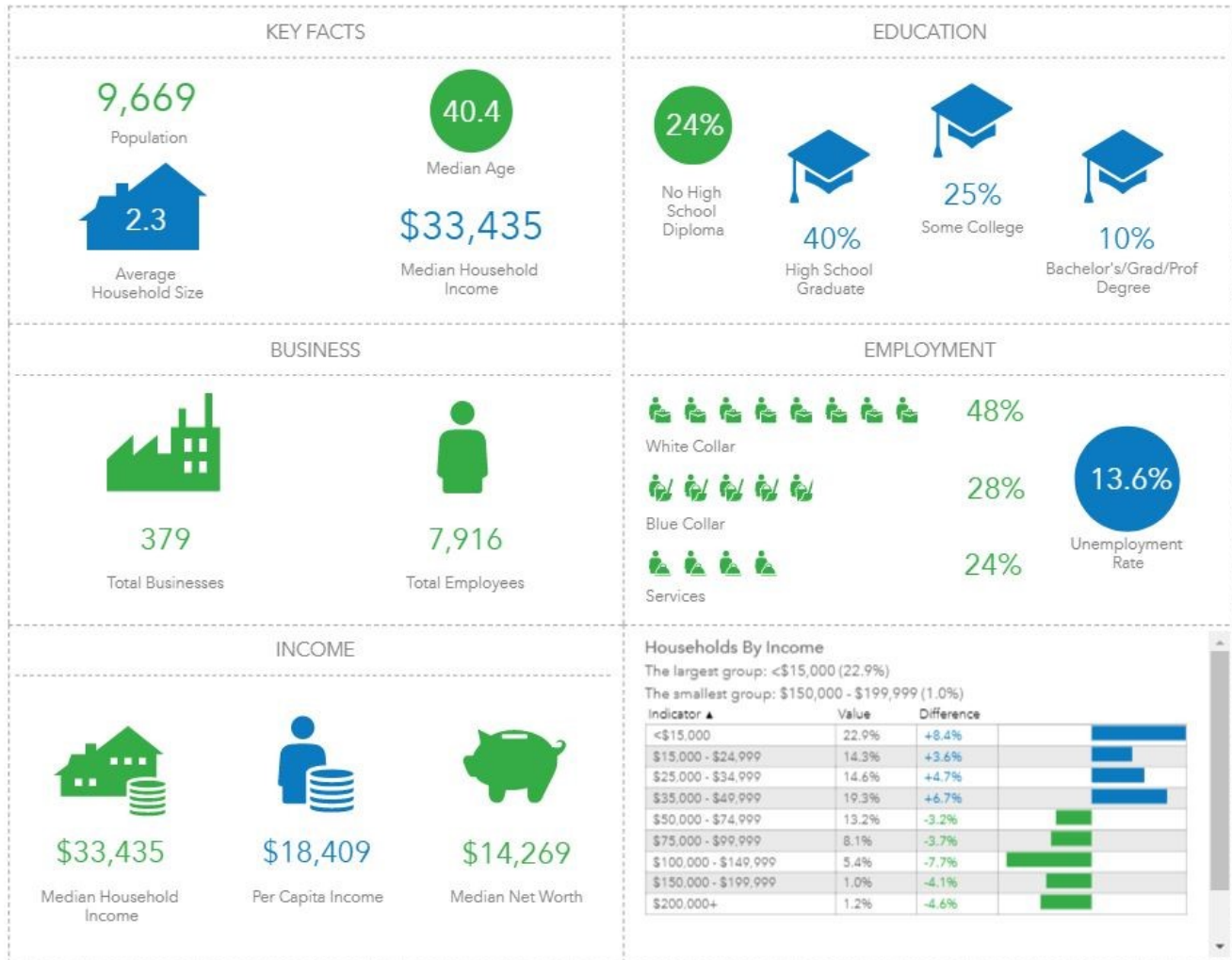


brokerage

Commercial Real Estate Solutions®

FOR LEASE

5179 Fishwick Drive  
Cincinnati, OH 45216





brokerage  
Commercial Real Estate Solutions®

**FOR LEASE**  
5179 Fishwick Drive  
Cincinnati, OH 45216



## Demographic and Income Profile

5179 Fishwick Dr, Cincinnati, Ohio, 45216  
Ring: 5 mile radius

Prepared by Esri  
Latitude: 39.18245  
Longitude: -84.48157

Summary	Census 2010		2017		2022		
Population	290,541		300,328		304,792		
Households	128,670		133,275		135,524		
Families	64,638		65,265		65,621		
Average Household Size	2.17		2.16		2.16		
Owner Occupied Housing Units	60,688		58,368		59,025		
Renter Occupied Housing Units	67,982		74,907		76,499		
Median Age	34.4		35.6		36.3		
Trends: 2017 - 2022 Annual Rate	Area		State		National		
Population	0.30%		0.23%		0.83%		
Households	0.34%		0.25%		0.79%		
Families	0.11%		0.09%		0.71%		
Owner HHs	0.22%		0.18%		0.72%		
Median Household Income	2.85%		2.23%		2.12%		
Households by Income	2017			2022			
	Number	Percent	Number	Percent			
	<\$15,000	27,118	20.3%	26,067	19.2%		
	\$15,000 - \$24,999	17,303	13.0%	15,985	11.8%		
	\$25,000 - \$34,999	14,698	11.0%	13,174	9.7%		
	\$35,000 - \$49,999	16,839	12.6%	15,193	11.2%		
	\$50,000 - \$74,999	19,693	14.8%	19,047	14.1%		
	\$75,000 - \$99,999	13,135	9.9%	16,310	12.0%		
	\$100,000 - \$149,999	13,448	10.1%	16,472	12.2%		
	\$150,000 - \$199,999	5,324	4.0%	6,524	4.8%		
\$200,000+	5,712	4.3%	6,747	5.0%			
Median Household Income	\$40,582		\$46,709				
Average Household Income	\$63,951		\$73,804				
Per Capita Income	\$28,855		\$33,279				
Population by Age	Census 2010		2017		2022		
	Number	Percent	Number	Percent	Number	Percent	
	0 - 4	19,291	6.6%	18,292	6.1%	18,601	6.1%
	5 - 9	16,896	5.8%	17,107	5.7%	16,624	5.5%
	10 - 14	16,169	5.6%	16,071	5.4%	16,269	5.3%
	15 - 19	22,488	7.7%	21,276	7.1%	21,352	7.0%
	20 - 24	28,985	10.0%	29,740	9.9%	28,540	9.4%
	25 - 34	43,759	15.1%	45,560	15.2%	45,993	15.1%
	35 - 44	33,621	11.6%	34,314	11.4%	36,356	11.9%
	45 - 54	40,313	13.9%	35,746	11.9%	33,186	10.9%
	55 - 64	32,633	11.2%	37,845	12.6%	36,928	12.1%
	65 - 74	17,692	6.1%	24,517	8.2%	29,238	9.6%
	75 - 84	12,751	4.4%	12,954	4.3%	14,899	4.9%
85+	5,944	2.0%	6,907	2.3%	6,807	2.2%	
Race and Ethnicity	Census 2010		2017		2022		
	Number	Percent	Number	Percent	Number	Percent	
	White Alone	158,695	54.6%	159,327	53.1%	157,101	51.5%
	Black Alone	116,014	39.9%	120,971	40.3%	124,113	40.7%
	American Indian Alone	596	0.2%	539	0.2%	533	0.2%
	Asian Alone	5,584	1.9%	7,449	2.5%	8,768	2.9%
	Pacific Islander Alone	158	0.1%	196	0.1%	230	0.1%
	Some Other Race Alone	2,656	0.9%	3,242	1.1%	3,927	1.3%
	Two or More Races	6,839	2.4%	8,605	2.9%	10,120	3.3%
	Hispanic Origin (Any Race)	6,937	2.4%	9,036	3.0%	11,212	3.7%
Data Note: Income is expressed in current dollars.							
Source: U.S. Census Bureau, Census 2010 Summary File 1. Esri forecasts for 2017 and 2022.							

Data Note: Income is expressed in current dollars.

Source: U.S. Census Bureau, Census 2010 Summary File 1. Esri forecasts for 2017 and 2022.

April 10, 2018





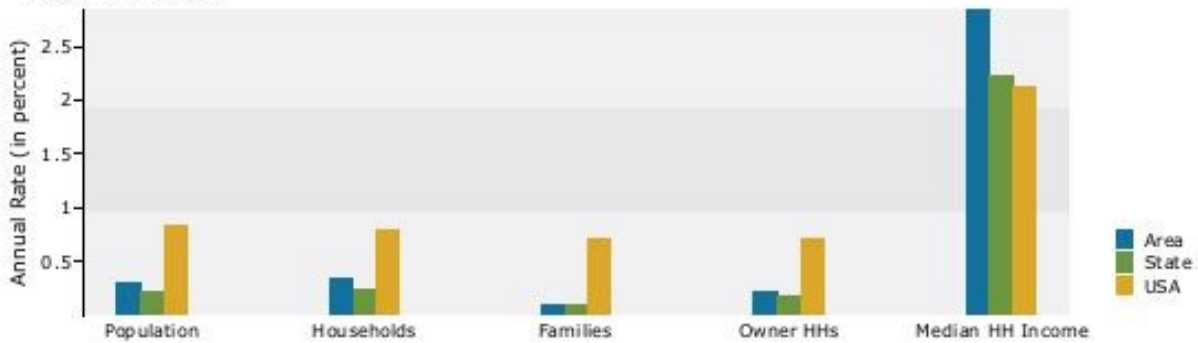
**esri**

## Demographic and Income Profile

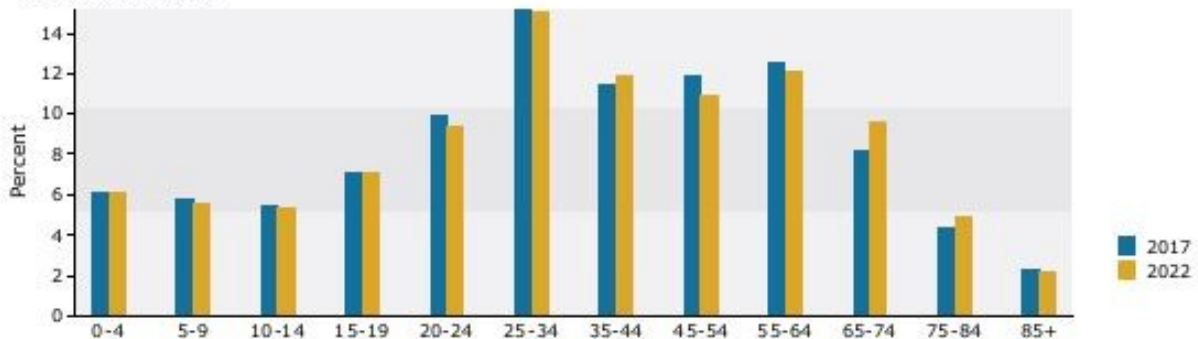
5179 Fishwick Dr, Cincinnati, Ohio, 45216  
Ring: 5 mile radius

Prepared by Esri  
Latitude: 39.18245  
Longitude: -84.48157

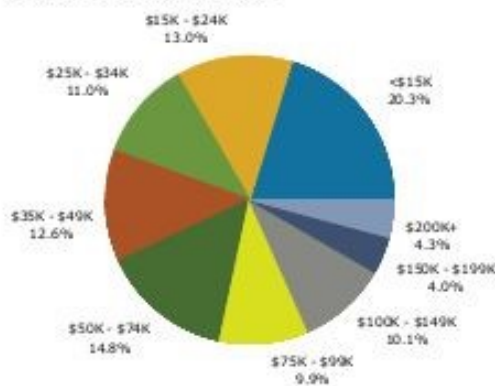
### Trends 2017-2022



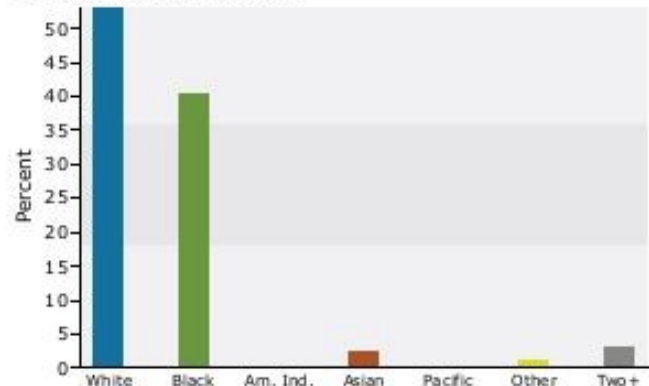
### Population by Age



### 2017 Household Income



### 2017 Population by Race



2017 Percent Hispanic Origin: 3.0%

Source: U.S. Census Bureau, Census 2010 Summary File 1. Esri forecasts for 2017 and 2022.

April 10, 2018



brokerage

Commercial Real Estate Solutions®

**FOR LEASE**

5179 Fishwick Drive  
Cincinnati, OH 45216

