

For Lease

1,642 - 3,742 SF
Garden Medical Office

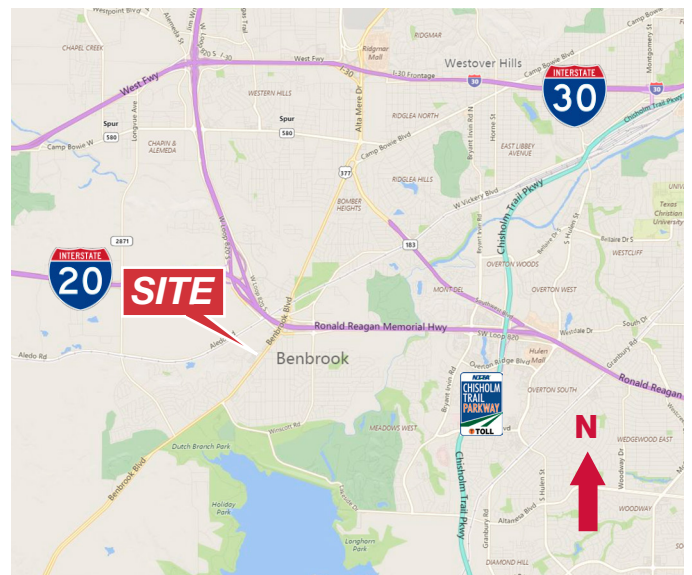


114 Sproles Drive

Benbrook, Texas 76126

Property Features

- Single-Story Garden Office Medical Building
- Located Off Highway 377, Just South of I-20
- 4.79:1000 Parking



Colt Power

817 872 3905
cpower@robertlynn.com

Jon McDaniel

817 872 3902
jmcdaniel@robertlynn.com



THE INFORMATION CONTAINED HEREIN HAS BEEN GIVEN TO US BY THE OWNER OF THE PROPERTY OR OTHER SOURCES WE DEEM RELIABLE. WE HAVE NO REASON TO DOUBT ITS ACCURACY, BUT WE DO NOT GUARANTEE IT. ALL INFORMATION SHOULD BE VERIFIED PRIOR TO PURCHASE OR LEASE.

1200 Summit Avenue Suite 800
Fort Worth TX 76102
817 885 8333

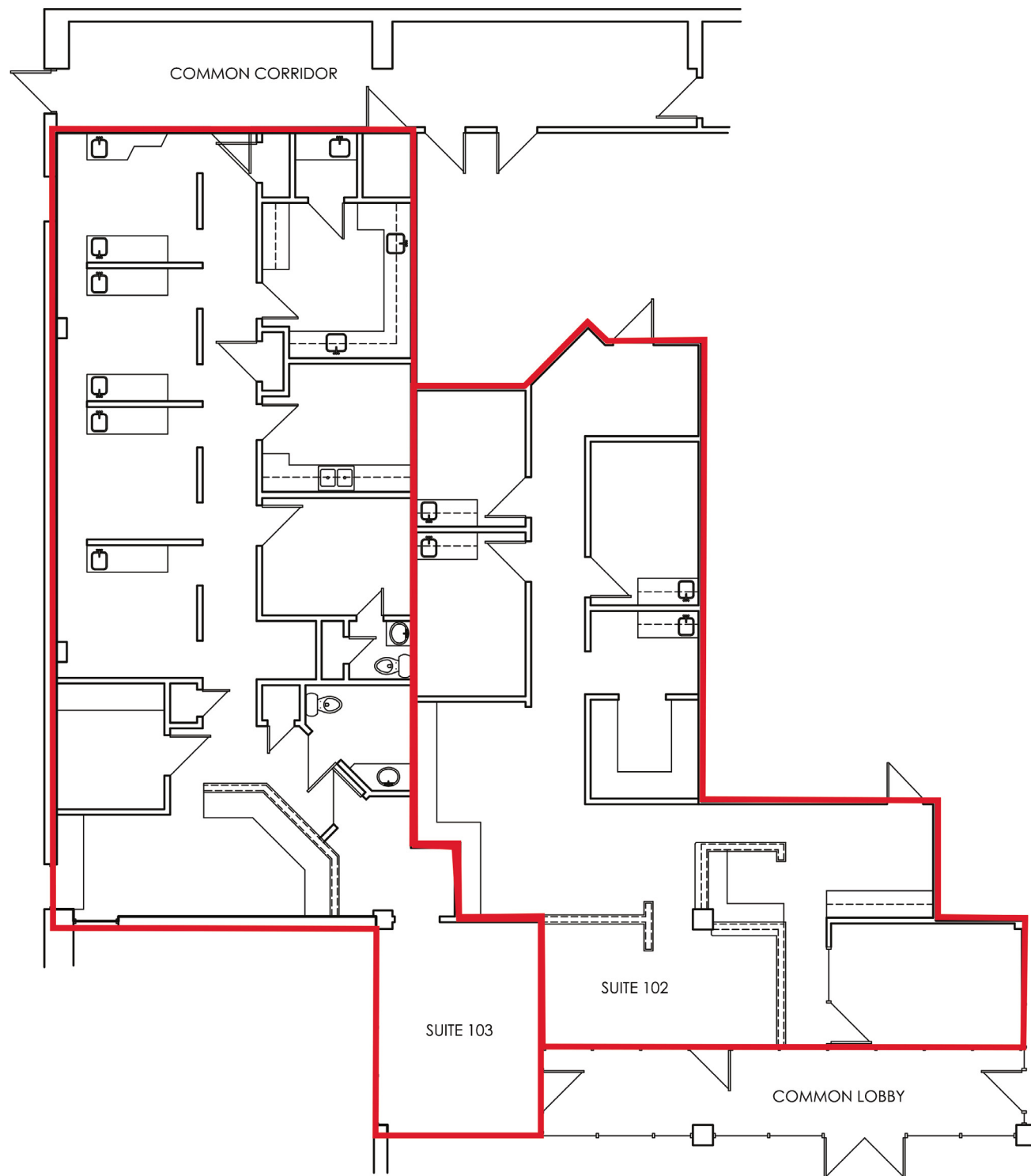
nairl.com

For Lease

1,642 - 3,742 SF
Garden Medical Office

114 Sproles Drive

Benbrook, Texas 76126



For Lease

1,642 - 3,742 SF
Garden Medical Office

114 Sproles Drive

Benbrook, Texas 76126

Suite 102

2,100 SF



Nurse Area



Office



Open Area



Reception

For Lease

1,642 - 3,742 SF
Garden Medical Office

114 Sproles Drive

Benbrook, Texas 76126

Suite 103

1,642 SF



Dental Bay



Front Desk



Lab



Waiting Area

For Lease

1,642 - 3,742 SF
Garden Medical Office

114 Sproles Drive

Benbrook, Texas 76126

