

# FOR SALE - #6000 Sq Ft of Class B Office Condos

## 4157 Chain Bridge Rd, Fairfax, VA 22030

- Over 20 offices
- Natural wood bookshelves
- Hard Wood Floors
- Three Fireplaces
- Walking distance to Judicial Square
- Walk to restaurants
- Walk to City Government
- Extensive Mill Work



Natural Wood Bookshelves & Hard Wood Floors



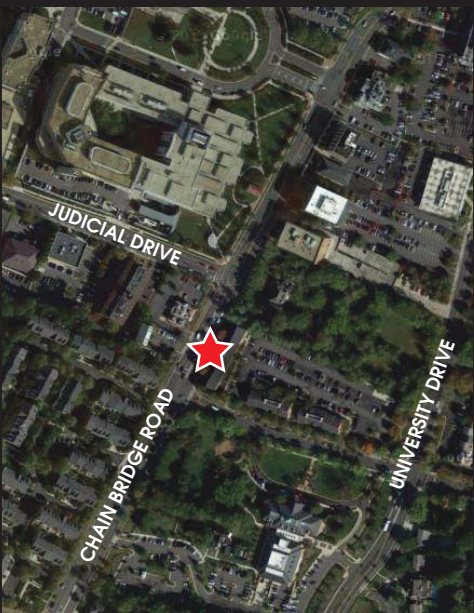
Three Levels



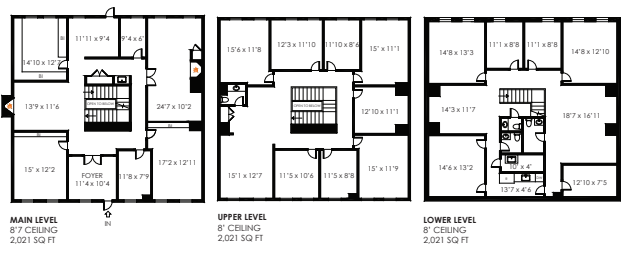
Three Fireplaces



Kitchen Spaces



- Prime Location in the heart of Fairfax
- Traditional Elegance
- Over 20 Offices



### 4157 CHAIN BRIDGE ROAD, FAIRFAX, VA 22030

ALL ILLUSTRATIONS, DIMENSIONS AND SQUARE FOOTAGE ESTIMATES ARE APPROXIMATE AND MAY VARY FROM ACTUAL STRUCTURE. DIMENSIONS HAVE BEEN ROUNDED.

ESTIMATED TOTAL SQUARE FOOTAGE: 6,063

**CONTACT GARY SIMPSON FOR MORE INFORMATION**

**703-431-3749**  
[gsimpson@remax.net](mailto:gsimpson@remax.net)



Gary Simpson, RE/MAX Allegiance  
 Managing Director, Commercial Division