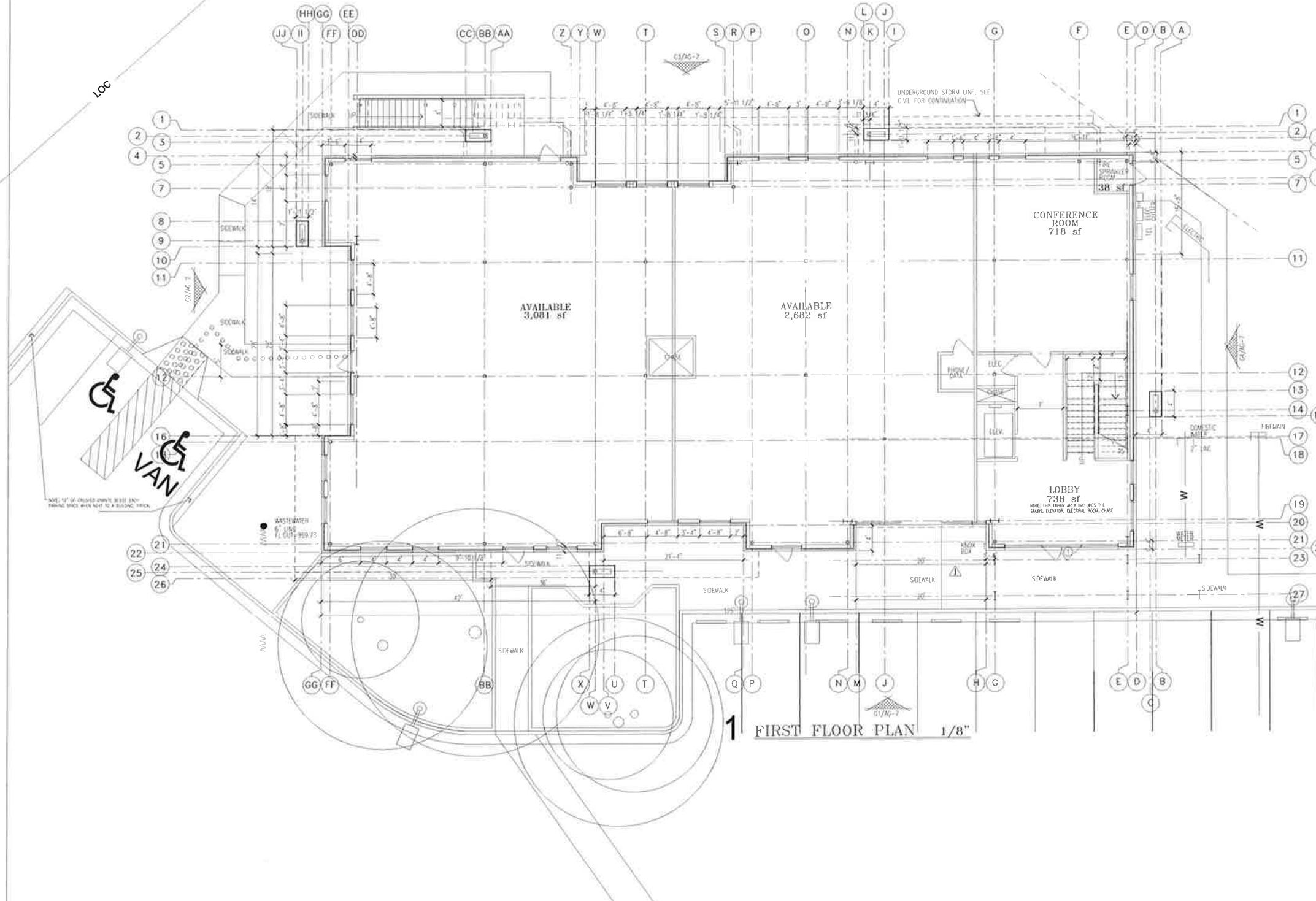


GENERAL NOTES

- 1 GC TO COORDINATE CIVIL AND ARCH PLANS FOR PAVEMENT AND GRADING
- 2 PROVIDE PORTABLE FIRE EXTINGUISHERS (NOT LESS THAN THREE A-10-BC) WITHIN 75' OF TRAVEL DISTANCE FROM ANY POINT IN BUILDING
- 3 STAIN ALL HANDICAP RAMPS A CONTRASTING COLOR TO THE SIDEWALK COLOR (TERRA COTTA COLOR) NOTE, USE AN CONCRETE STAIN.
- 4 SPRINKLER ROOM, TAPE FLOAT BOTH SIDES; PAINT TWO COATS; CAULK INSIDE AT FLOOR ALL AROUND; 4" VINYL BASE INSIDE
- 5 DIMENSIONS ARE TO FACE OF GYP. BD. WHERE SHOWN ON GYP. BD. WALLS

FLOOR PLAN - KEY NOTES

- ① STEEL COLUMNS - SEE STRUCTURAL DRAWINGS
- ② CONCRETE FLOOR SLAB, SEE STRUCTURAL
- ③ ELECTRICAL METER AND DISCONNECT; SEE ELECTRICAL DRAWINGS



TOTALS

FIRST FLOOR	7,257 SF
SECOND FLOOR	8,015 SF
TOTAL	15,272 SF
	FFE = 974.0

1 FIRST FLOOR PLAN 1/8"



GARY SHAW ARCHITECTS

design
+
planning

1821 margaret st.
austin, texas 78704
off: (512)416-8471
fax: (512)416-8470

As only a part of the design process, this document is incomplete and may not be used for regulatory approval, permit or construction.

PRELIMINARY
7-29-2015

GATEWAY TO FALCONHEAD

BUILDING 'G'

3526-G SOUTH FM 620
BEE CAVE, TEXAS 78738

project no.
207.1202

date
9-06-2013

scale:
1/8" = 1'-0"

revisions

FIRST FLOOR FLOOR PLAN

sheet no.

G-1

GENERAL NOTES

1. PROVIDE PORTABLE FIRE EXTINGUISHERS (NOT LESS THAN THREE A-10-BC) WITHIN 75' OF TRAVEL DISTANCE FROM ANY POINT IN BUILDING
2. DIMENSIONS ARE TO FACE OF CYP. BD. WHERE SHOWN ON CYP. BD. WALLS



GARY SHAW ARCHITECTS

design + planning

1821 margaret st.
austin, texas 78704
off: (512)416-8471
fax: (512)416-8478

As only a part of the design process, this document is incomplete and may not be used for regulatory approval, permit or construction.

PRELIMINARY
7-29-2015

GATEWAY TO FALCONHEAD

BUILDING 'G'

3526-G SOUTH FM 620
BEE CAVE, TEXAS 78738

project no.
207.1202

date
9-06-2013

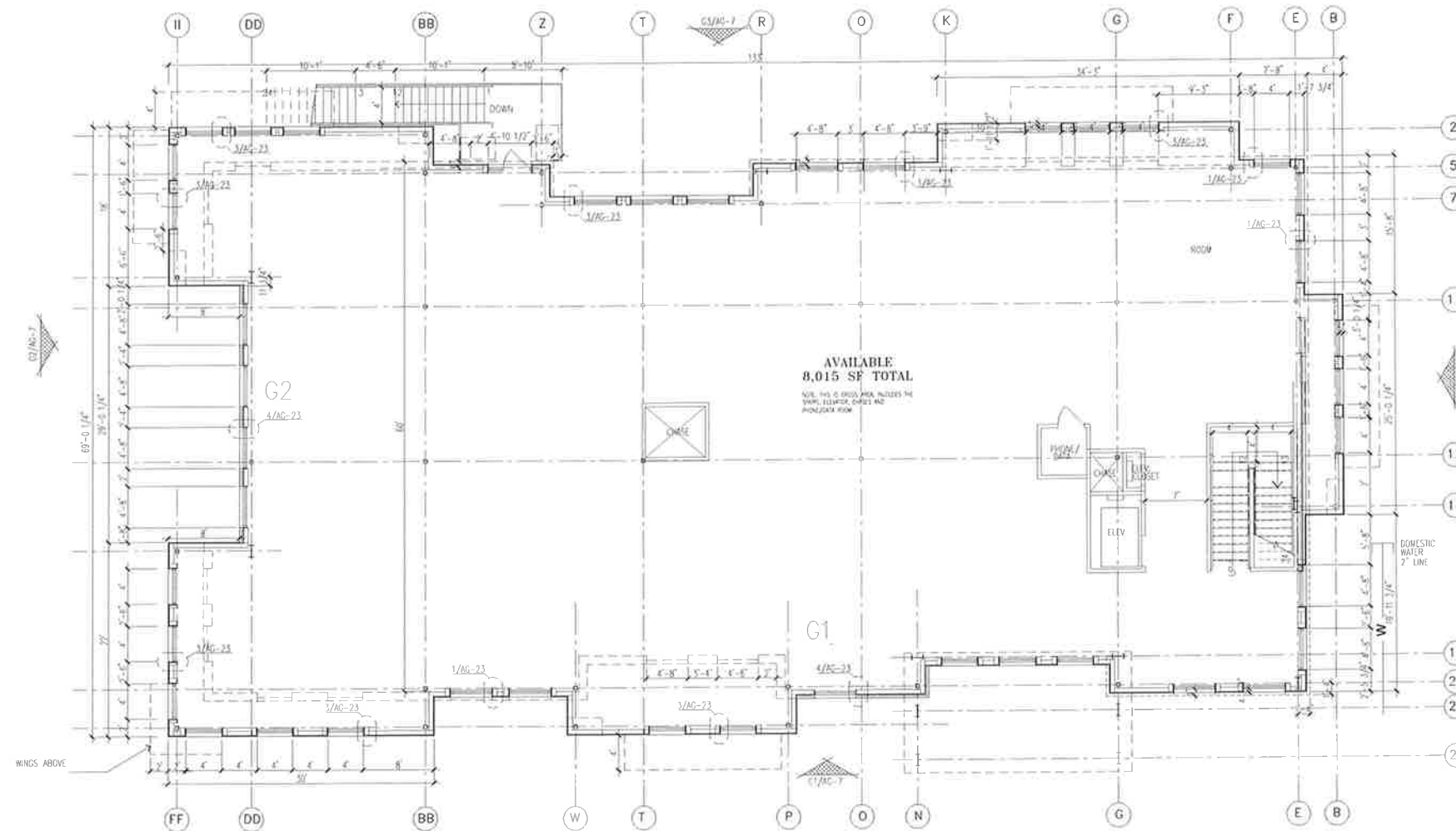
scale:
1/8"=1'-0"

revisions

SECOND FLOOR PLAN

sheet no.

G-2



1 SECOND FLOOR PLAN 1/8"