

HAMBURG, NJ - LEVEL 10 PLAZA

3672 STATE RT 94, HAMBURG, NJ 07419



OFFERING SUMMARY

Available SF: 2,100 SF
 Lease Rate: Call for Details
 Building Size: 2,100 SF

NEIGHBORING TENANTS



PROPERTY OVERVIEW

Available Immediately: Retail space for lease in 12,000 SF Strip Center located in Hamburg NJ

PROPERTY HIGHLIGHTS

- Available Immediately
- 12,000 SF Strip Center
- Join: Enterprise, Subway, Hollywood Tans & Dunkin Donuts
- Attractive Storefront Facade
- Ample Parking
- 2nd Busiest Roadway in County with 9,000+ Cars Daily
- Excellent Highway Access & Exposure
- Convenient Access to Route 23

FOR MORE INFORMATION CONTACT:

RICHARD CURRAN
 201.703.9700 x114
 rcurran@thegoldsteingroup.com

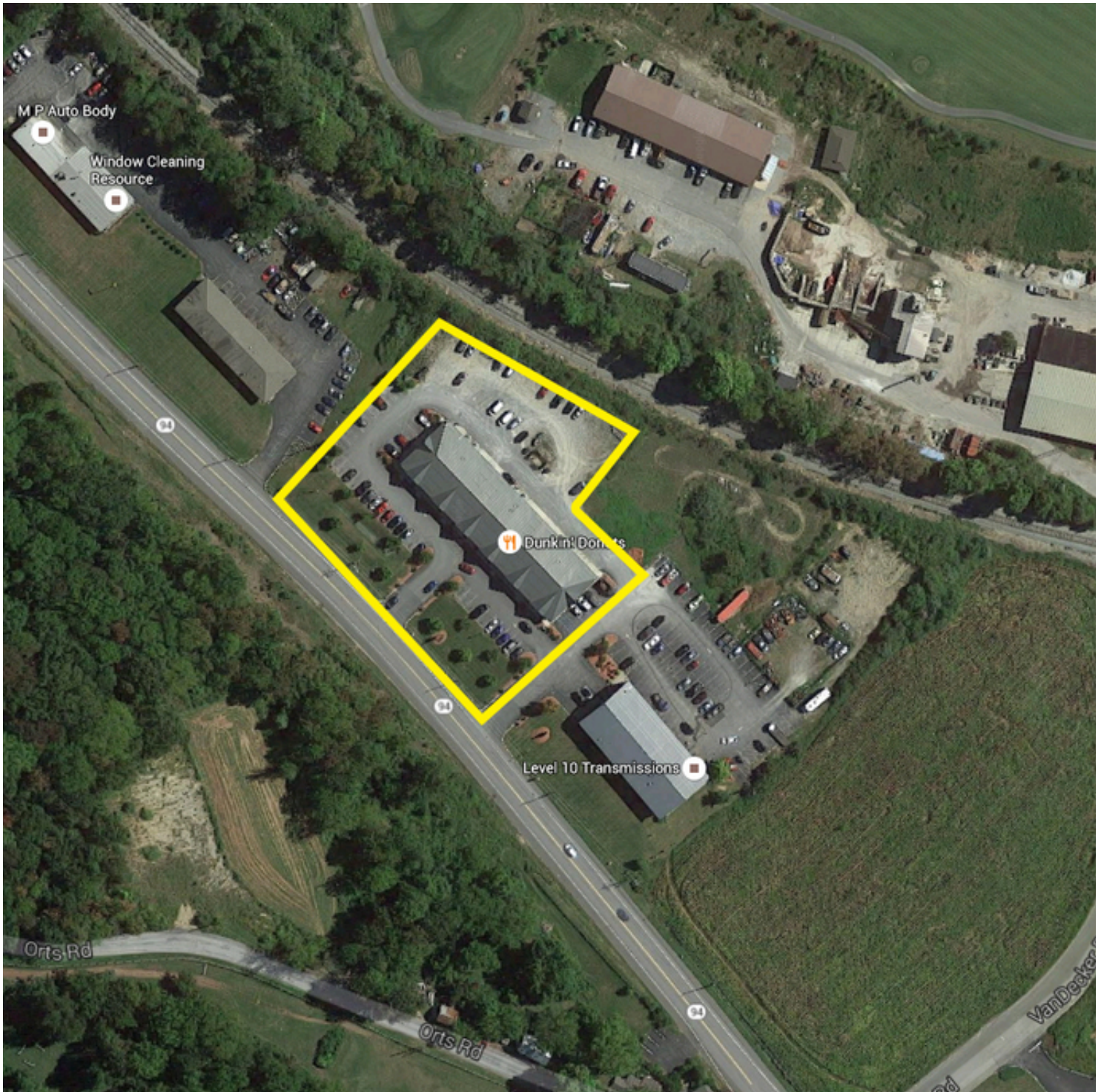
CHRISTOPHER CONWAY
 201.703.9700 x143
 cconway@thegoldsteingroup.com



THEGOLDSTEINGROUP.COM

HAMBURG, NJ - LEVEL 10 PLAZA

3672 STATE RT 94, HAMBURG, NJ 07419



FOR MORE INFORMATION CONTACT:

RICHARD CURRAN

201.703.9700 x114
rcurran@thegoldsteingroup.com

CHRISTOPHER CONWAY

201.703.9700 x143
cconway@thegoldsteingroup.com

Licensed Real Estate Broker | 45 EISENHOWER DRIVE | SUITE 500 | PARAMUS, NJ 07652

All information is from sources deemed reliable and is submitted subject to errors, omissions, change of price, terms, rental, prior sale and withdrawal without notice.



THEGOLDSTEINGROUP.COM

HAMBURG, NJ - LEVEL 10 PLAZA

3672 STATE RT 94, HAMBURG, NJ 07419



FOR MORE INFORMATION CONTACT:

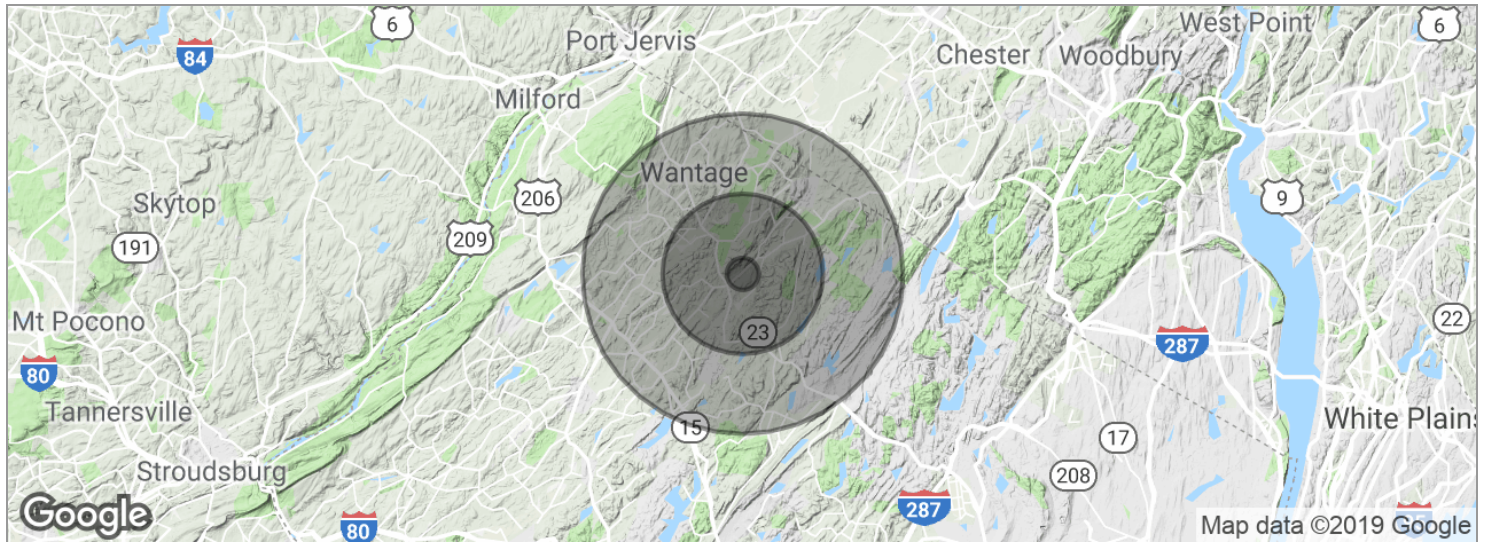
RICHARD CURRAN
201.703.9700 x114
rcurran@thegoldsteingroup.com

CHRISTOPHER CONWAY
201.703.9700 x143
cconway@thegoldsteingroup.com



HAMBURG, NJ - LEVEL 10 PLAZA

3672 STATE RT 94, HAMBURG, NJ 07419



POPULATION	1 MILE	5 MILES	10 MILES
Total population	3,862	34,308	96,488
Median age	37.0	39.9	40.1
Median age (Male)	37.0	38.9	39.1
Median age (Female)	37.2	40.9	41.0
HOUSEHOLDS & INCOME	1 MILE	5 MILES	10 MILES
Total households	1,660	13,475	35,388
# of persons per HH	2.3	2.5	2.7
Average HH income	\$73,088	\$83,235	\$97,569
Average house value	\$252,549	\$301,096	\$377,930

* Demographic data derived from 2010 US Census

FOR MORE INFORMATION CONTACT:

RICHARD CURRAN
201.703.9700 x114
rcurran@thegoldsteingroup.com

CHRISTOPHER CONWAY
201.703.9700 x143
cconway@thegoldsteingroup.com

