

# 8 South Morris Street Dover, NJ



## FOR LEASE

### PROPERTY SPECS:

**Property Type:** Office/Medical

**Total Building Size:** 20,000 SF

**Available Space:**

- Suite 1A – 800 SF
- Suite 1B – 1,000 SF
- Suite 200 – 1,500 SF
- Suite 302 – 800 SF
- Suite 303 – 1,550 SF
- Suite 302-303 – 2,350 SF

**Lease Rate:** \$12 PSF Gross + TE

**Parking:** 9 reserved spaces; street parking available

**Comments:** Close proximity to Routes 46, 10 and 80. 100 yards from Dover train station (NJ Transit).

*For more information, please contact:*

**Brian Wilson**

[bwilson@resource-realty.com](mailto:bwilson@resource-realty.com)

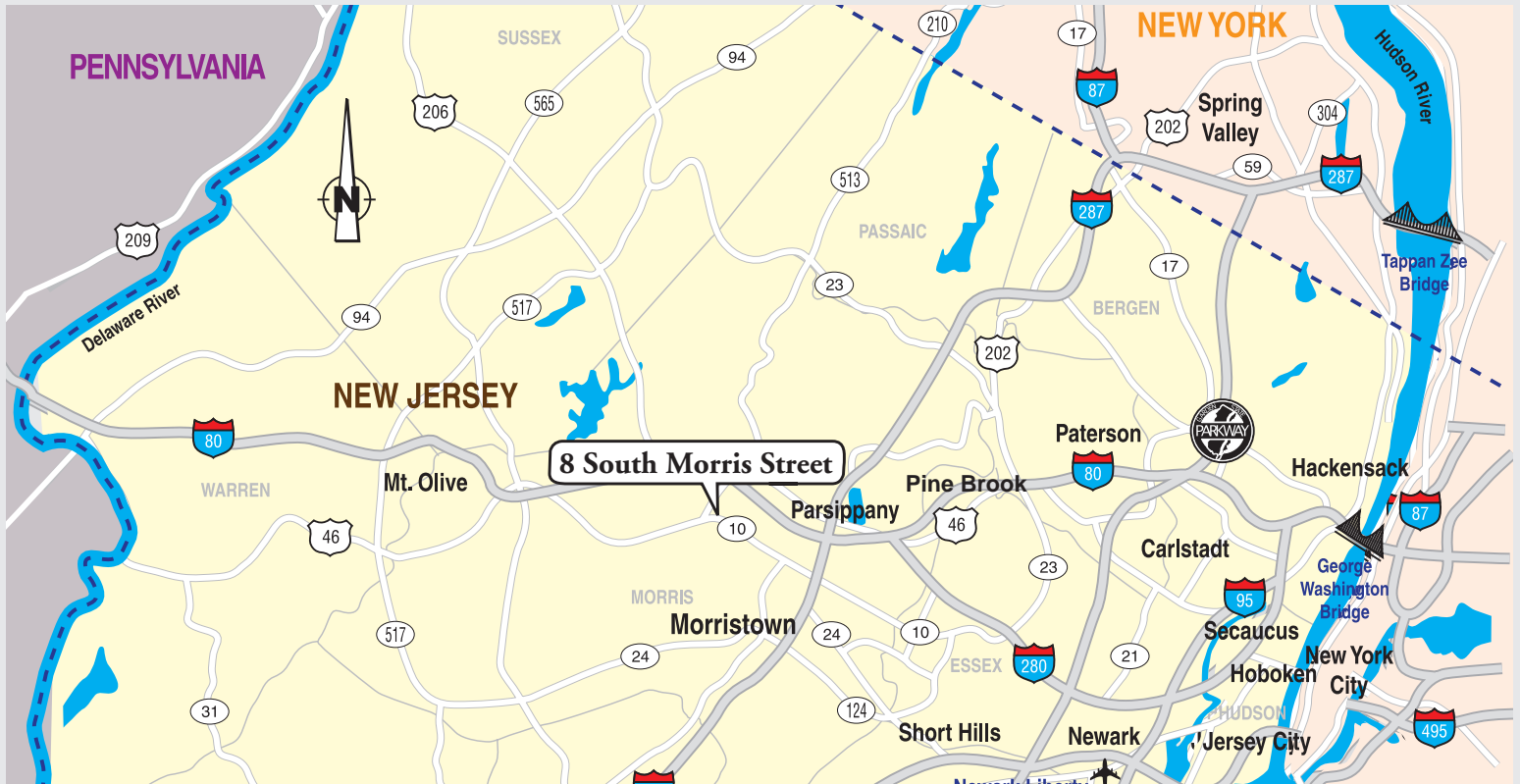
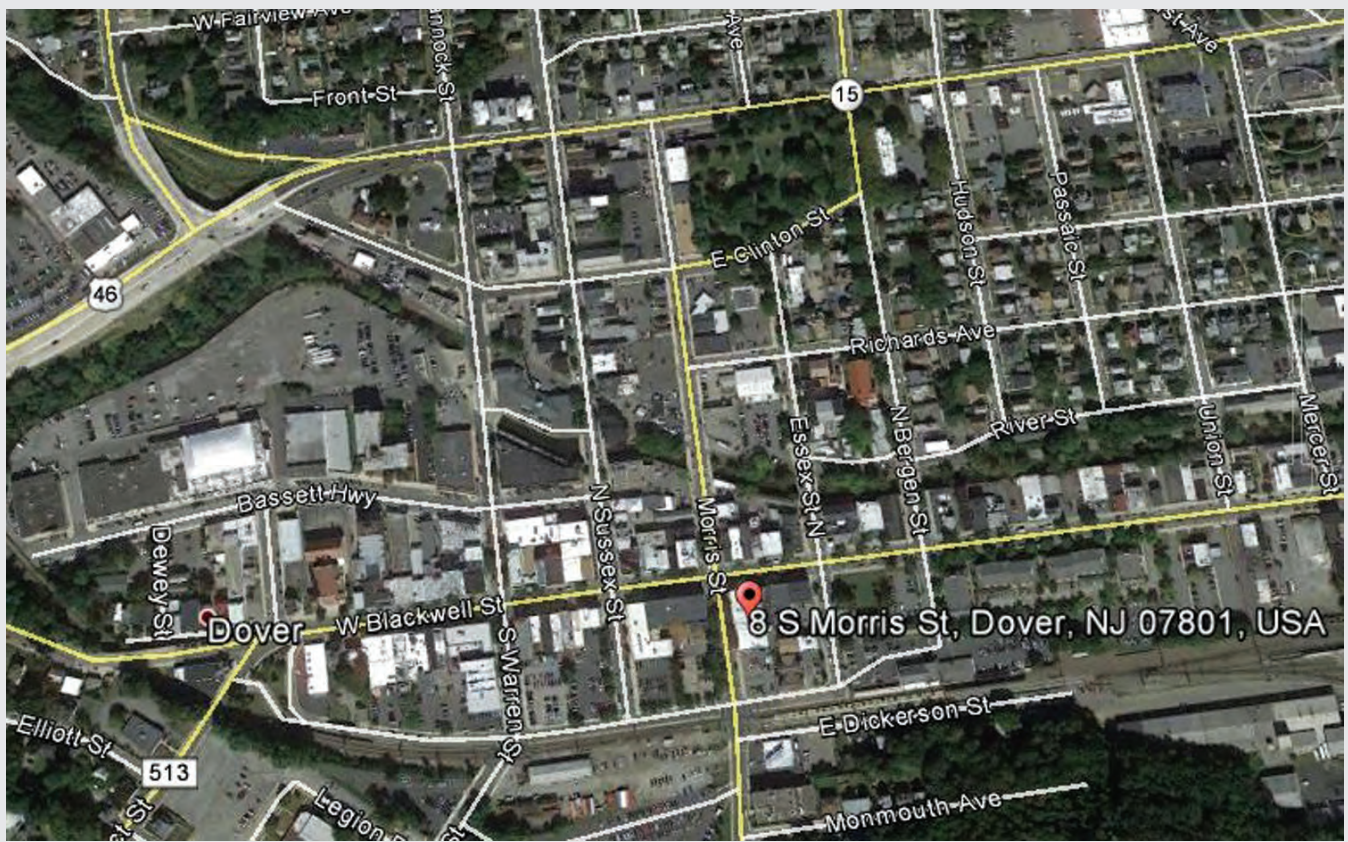
**973-299-0900**

*Exclusive Leasing Agent:*



**Resource Realty**  
Corporate Real Estate Services

[www.resource-realty.com](http://www.resource-realty.com)



All information furnished is from sources deemed reliable. No representation is made as to the accuracy thereof and it is submitted subject to error, omission, change of price, prior sale or lease and withdrawal without notice. Any commission due cooperating brokers is subject to all of the terms and conditions upon which we and our clients have agreed.

Exclusive Leasing Agent:



973-299-0900  
[www.resource-realty.com](http://www.resource-realty.com)