

# FOR LEASE

## OFFICE / WAREHOUSE

### 1001 W. 27<sup>th</sup> Street, Norfolk, VA



- ± 2,349 SF
- Zoned I-3 (Industrial - General Light)
- Renovations in 2018
- Located east of Hampton Boulevard & west of Colley Avenue
- Accessible to Naval Station Norfolk, local shipyards, Downtown Norfolk, Ghent, Old Dominion University & City of Portsmouth
- Two Grade Level Doors: 10' x 8'
- Secured & fenced yard x 5,000 SF
- Lease: \$2,155 per month

CONTACT: \_\_\_\_\_

**BOB KING**  
**(757) 640-8207**  
[bobking@harveylindsay.com](mailto:bobking@harveylindsay.com)

**HARVEY LINDSAY**  
COMMERCIAL REAL ESTATE

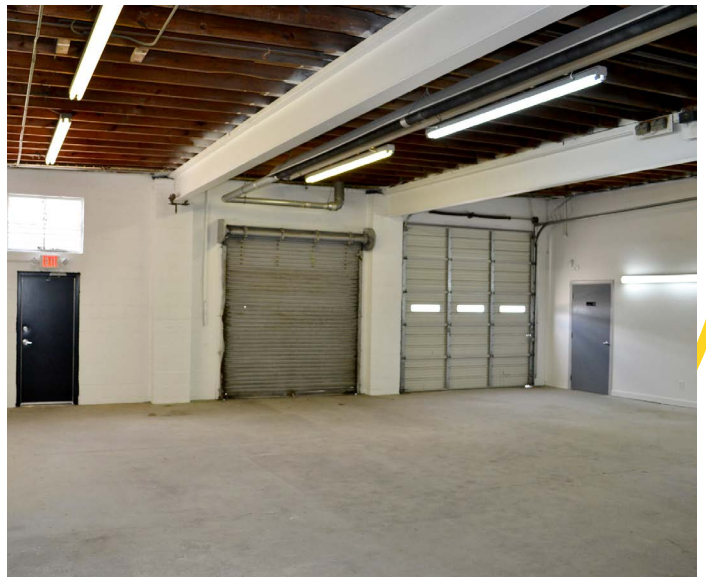
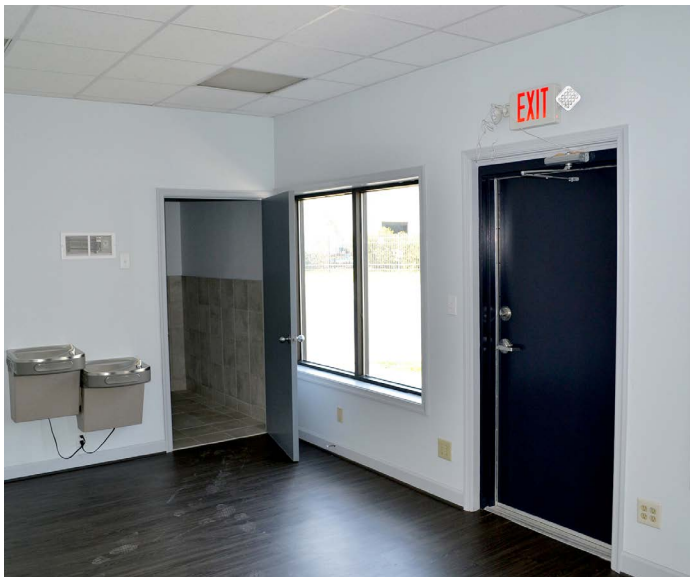
INTEGRITY, STRENGTH AND SERVICE, *Every Day for Over Half a Century.*

999 Waterside Drive ■ Suite 1400 ■ Norfolk, Virginia 23510 ■ 757.640.8700 ■ [www.harveylindsay.com](http://www.harveylindsay.com)

# FOR LEASE

## OFFICE / WAREHOUSE

### 1001 W. 27<sup>th</sup> Street, Norfolk, VA



CONTACT:

**BOB KING**

**(757) 640-8207**

[bobking@harveylindsay.com](mailto:bobking@harveylindsay.com)

**HARVEY LINDSAY**

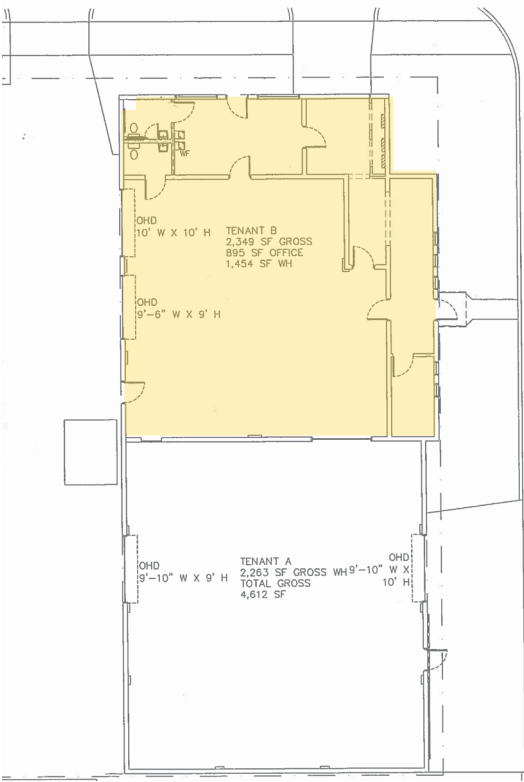
COMMERCIAL REAL ESTATE

*A Tradition of Forward Thinking*

The information contained herein has been obtained from sources believed to be reliable but is not warranted.  
We cannot be responsible for errors, omissions, withdrawal, or prior lease.



**OFFICE/WAREHOUSE FOR LEASE: 1001 W. 27<sup>th</sup> Street, Norfolk, VA**



**CONTACT:**

**BOB KING**

**(757) 640-8207**

[bobking@harveylindsay.com](mailto:bobking@harveylindsay.com)

**HARVEY LINDSAY**

COMMERCIAL REAL ESTATE

*A Tradition of Forward Thinking*

The information contained herein has been obtained from sources believed to be reliable but is not warranted. We cannot be responsible for errors, omissions, withdrawal, or prior lease.