

**Columbia Plaza
 Prospective
 Multi-Tenant Building**

7300 Columbia Street
 Evansville, Indiana 47715

Client

HEM Properties
 Newburgh, Indiana 47630

Architect



4505 Leachman Drive Evansville, IN 47715 (812) 479-3000
 3201 Interstate Drive Evansville, IN 47715 (812) 479-3000
 113 East 2nd Street Evansville, IN 47715 (219) 691-1000

Associated Engineers

Civil Engineer

Structural Engineer

HVAC & Plumbing Engineer

**Professional Certification
 Design Ownership
 Statement**
 All design work remains the property of the architect and may not be utilized or reproduced without prior written authorization after remittance of compensation.



NOT FOR CONSTRUCTION

Copyright Protection

All drawings, specifications, and other documents ("documents" hereinafter) are protected under IT U.S.C. § 102. The design professional responsible for the preparation of the documents retains all statutory rights, common law rights, and intellectual property rights. The documents shall not be released, duplicated, copied or used by any person or entity without the express written consent of the design professional. Authorized use of electronic documents does not guarantee the information contained in the electronic documents is current, complete or accurate. It is the responsibility of all document users to verify with the design professional the documents (print or electronic) in question are the most current, complete and accurate documents available. All documents are for exclusive use on the referenced project only.

Applicability Disclaimer

This is a comprehensive set of working drawings and specifications. Some drawings and/or specifications may not be applicable to this specific project. It is the responsibility of every Contractor, Sub-Contractor, Vendor, and Supplier to review all drawings and/or specifications to determine their applicability to this specific project.

Present the Architect with all applicability questions prior to bidding. Failure to comply with this requirement will be the basis for rejecting associated change order requests. If a specified product is no longer available it shall be the Contractor, Sub-Contractor, Vendor or Supplier's responsibility to provide an equal substitution. The Architect reserves the sole right to determine the suitability of proposed substitutions.

Sheet Content

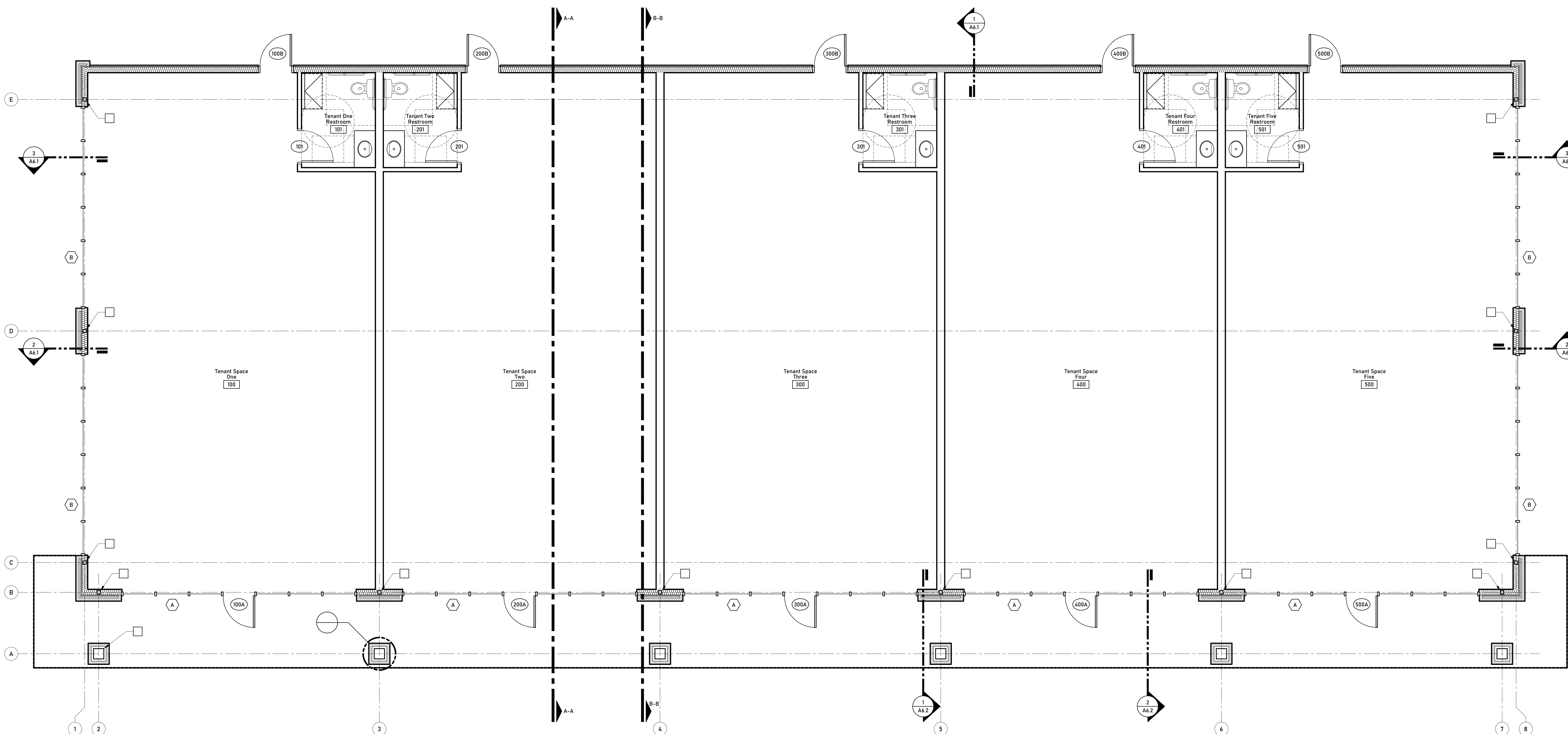
**Architectural
 Annotation Floor Plans**

Sheet Revisions

No.	Brief Description Of Revision	Date

Drawing Information

Architect's Project No. ARCH217	Drawing Sheet No. A1.1
Original Print Date 2021 1-14	Date of This Print
Consultation Phase	Construction Documents



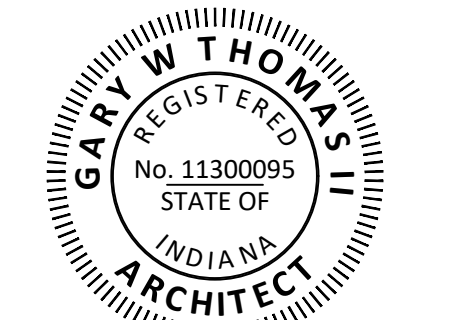
Annotation Floor Plan

Scale: 1/4" = 1'-0"





**Professional Certification
 Design Ownership
 Statement**
 All design work remains the
 property of the architect and
 may not be utilized or
 reproduced without prior
 written authorization after
 remittance of compensation.



NOT FOR CONSTRUCTION

Copyright Protection

All drawings, specifications, and other documents ("documents" hereinafter) are protected under IT U.S.C. § 102. The design professional responsible for the preparation of the documents retains all statutory rights, common law rights, and intellectual property rights. The documents shall not be released, duplicated, copied or used by any person or entity without the express written consent of the design professional. Authorized use of electronic documents does not guarantee the information contained in the electronic documents is current, complete or accurate. It is the responsibility of all document users to verify with the design professional the documents (print or electronic) in question are the most current, complete and accurate documents available. All documents are for exclusive use on the referenced project only.

Applicability Disclaimer

This is a comprehensive set of working drawings and specifications. Some drawings and/or specifications may not be applicable to this specific project. It is the responsibility of every Contractor, Sub-Contractor, Vendor, and Supplier to review all drawings and/or specifications to determine their applicability to this specific project. Present the Architect with all applicability questions prior to bidding. Failure to comply with this requirement will be the basis for rejecting associated change order requests.

If a specified product is no longer available, it shall be the Contractor, Sub-Contractor, Vendor or Supplier's responsibility to provide an equal substitution. The Architect reserves the sole right to determine the suitability of proffered substitutions.

Sheet Content

**Architectural
 Dimension Floor Plans**

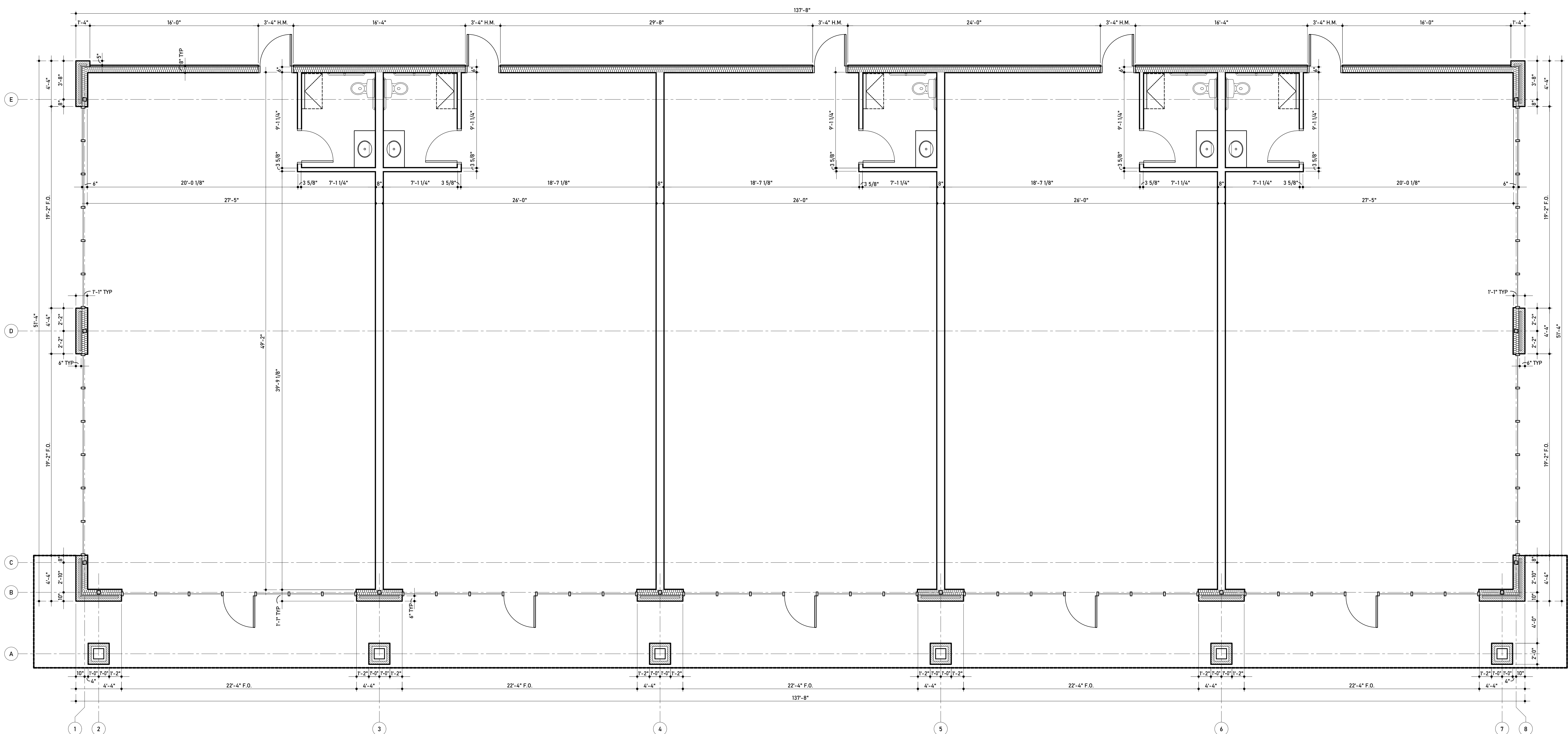
Sheet Revisions

No.	Brief Description of Revision	Date

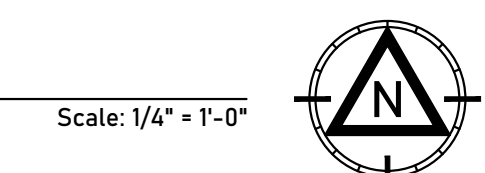
Drawing Information

Architect's Project No. ARCH217	Drawing Sheet No.
Original Print Date 2021 1-14	
Date of This Print	
Consultation Phase	
Construction Documents	

A1.2



Dimension Floor Plan



**Columbia Plaza
 Prospective
 Multi-Tenant Building**

7300 Columbia Street
 Evansville, Indiana 47715

Client

HEM Properties
 Newburgh, Indiana 47630

Architect



4505 Leachman Drive
 Evansville, IN 47715
 (812) 479-3000

3201 Interstate Drive
 Evansville, IN 47715
 (812) 479-7000

113 East 2nd Street
 Owensboro, KY 40303
 (502) 691-1000

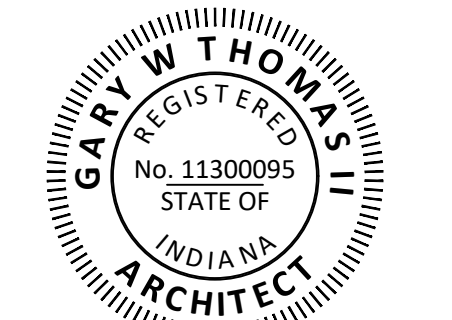
Associated Engineers

Civil Engineer

Structural Engineer

HVAC & Plumbing Engineer

**Professional Certification
 Design Ownership
 Statement**
 All design work remains the
 property of the architect and
 may not be utilized or
 reproduced without prior
 written authorization after
 remittance of compensation.



NOT FOR CONSTRUCTION

Copyright Protection

All drawings, specifications, and other documents ("documents" hereinafter) are protected under IT U.S.C. § 102. The design professional responsible for the preparation of the documents retains all statutory rights, common law rights, and intellectual property rights. The documents shall not be released, duplicated, copied or used by any person or entity without the express written consent of the design professional. Authorized use of electronic documents does not guarantee the information contained in the electronic documents is current, complete or accurate. It is the responsibility of all document users to verify with the design professional the documents (print or electronic) in question are the most current, complete and accurate documents available. All documents are for exclusive use on the referenced project only.

Applicability Disclaimer

This is a comprehensive set of working drawings and specifications. Some drawings and/or specifications may not be applicable to this specific project. It is the responsibility of every Contractor, Sub-Contractor, Vendor, and Supplier to review all drawings and/or specifications to determine their applicability to this specific project. Present the Architect with all applicability questions prior to bidding. Failure to comply with this requirement will be the basis for rejecting associated change order requests.

If a specified product is no longer available, it shall be the Contractor, Sub-Contractor, Vendor or Supplier's responsibility to provide an equal substitution. The Architect reserves the sole right to determine the suitability of proffered substitutions.

Sheet Content

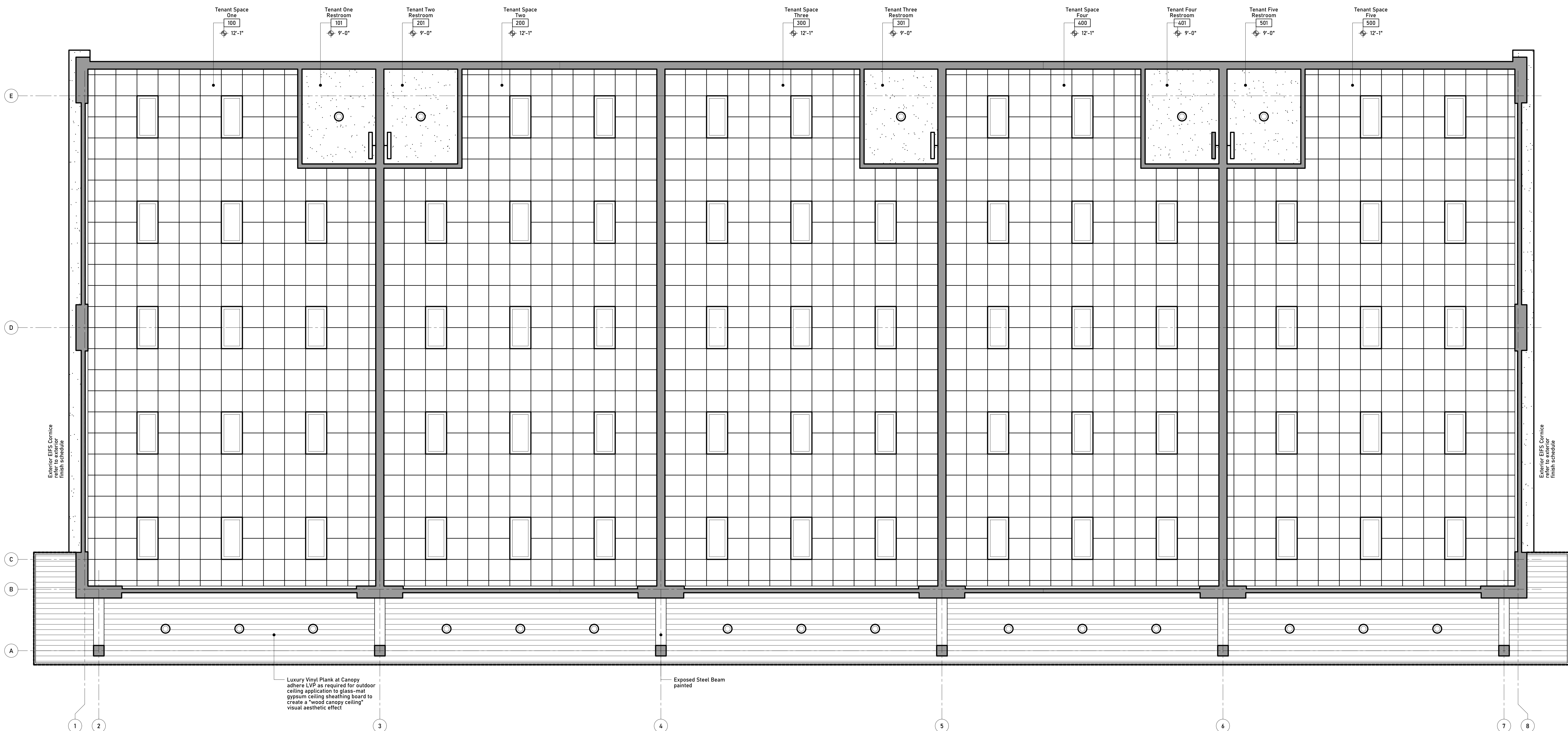
**Architectural
 Reflected Ceiling Plans**

Sheet Revisions

No.	Brief Description Of Revision	Date

Drawing Information

Architect's Project No. ARCH217	Drawing Sheet No. A2.1
Original Print Date 2021 1-14	Date of This Print
Construction Phase	Construction Documents



Reflected Ceiling Plan

Scale: 1/4" = 1'-0"



**Columbia Plaza
 Prospective
 Multi-Tenant Building**

7300 Columbia Street
 Evansville, Indiana 47715

Client

HEM Properties
 Newburgh, Indiana 47630

Architect



4505 Leachman Drive
 Evansville, IN 47715
 (812) 479-3000

3201 Interstate Drive
 Evansville, IN 47715
 (812) 479-7000

113 East 2nd Street
 Owensboro, KY 40303
 (502) 691-1000

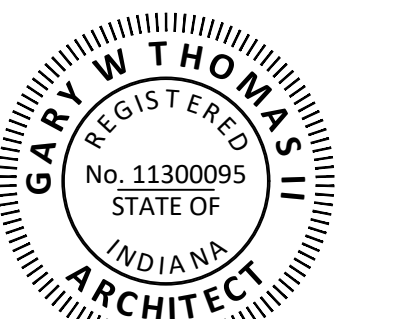
Associated Engineers

Civil Engineer

Structural Engineer

HVAC & Plumbing Engineer

**Professional Certification
 Design Ownership
 Statement**
 All design work remains the
 property of the architect and
 may not be utilized or
 reproduced without prior
 written authorization after
 remittance of compensation.



NOT FOR CONSTRUCTION

Copyright Protection

All drawings, specifications, and other documents ("documents" hereafter) are protected under IT U.S.C. § 102. The design professional responsible for the preparation of the documents retains all statutory rights, common law rights, and intellectual property rights. The documents shall not be released, duplicated, copied or used by any person or entity without the express written consent of the design professional. Authorized use of electronic documents does not guarantee the information contained in the electronic documents is current, complete or accurate. It is the responsibility of all document users to verify with the design professional the documents (print or electronic) in question are the most current, complete and accurate documents available. All documents are for exclusive use on the referenced project only.

Applicability Disclaimer

This is a comprehensive set of working drawings and specifications. Some drawings and/or specifications may not be applicable to this specific project. It is the responsibility of every Contractor, Sub-Contractor, Vendor, and Supplier to review all drawings and/or specifications to determine their applicability to this specific project. Present the Architect with all applicability questions prior to bidding. Failure to comply with this requirement will be the basis for rejecting associated change order requests.

If a specified product is no longer available it shall be the Contractor, Sub-Contractor, Vendor or Supplier's responsibility to provide an equal substitution. The Architect reserves the sole right to determine the suitability of proffered substitutions.

Sheet Content

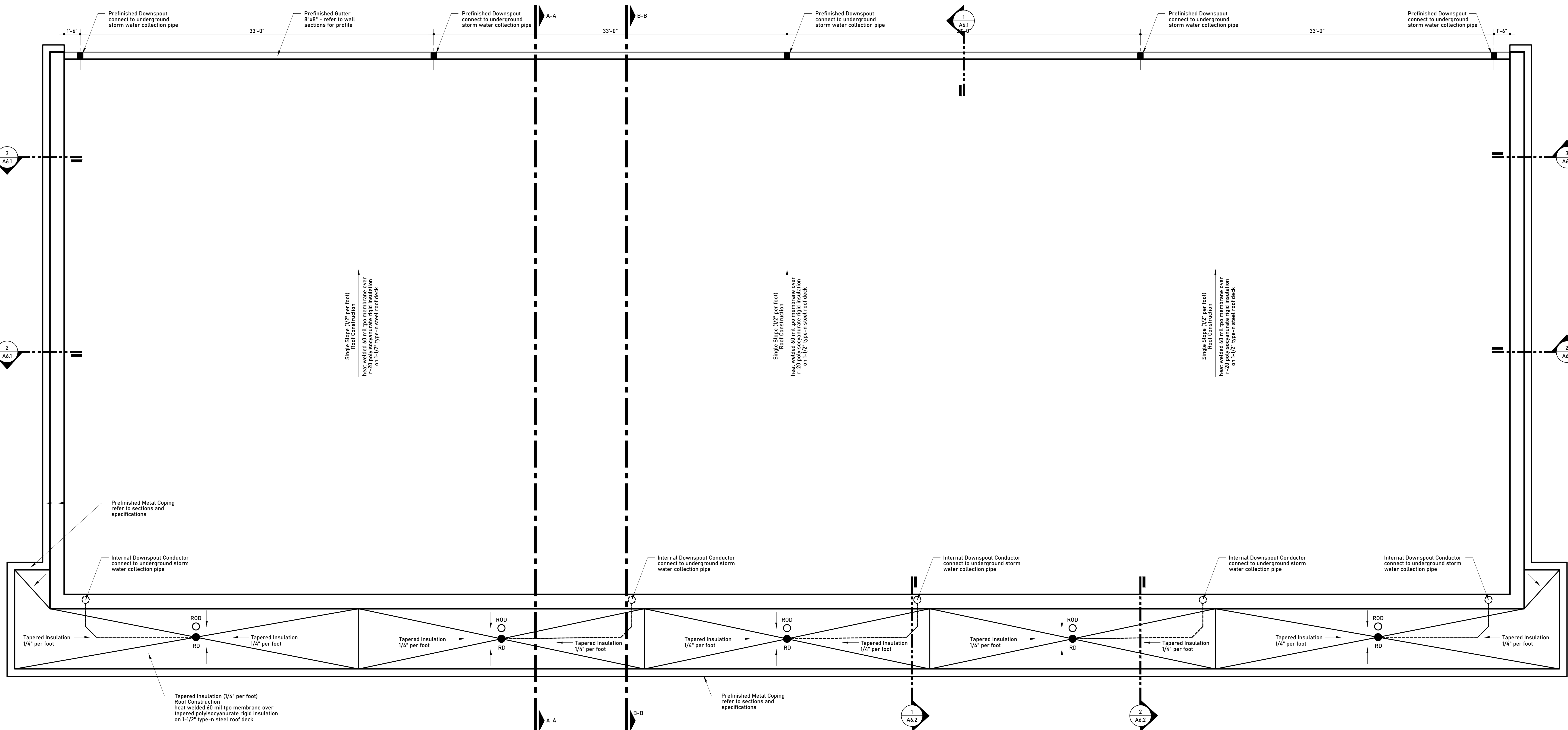
**Architectural
 Roof Plan**

Sheet Revisions

No.	Brief Description Of Revision	Date

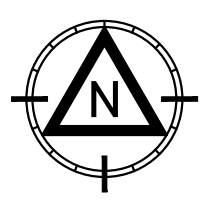
Drawing Information

Architect's Project No. ARCH2117	Drawing Sheet No. A3.1
Original Print Date 2021 1-14	Date of This Print
Consultation Phase	Construction Documents



Roof Plan

Scale: 1/4" = 1'-0"





**Professional Certification
 Design Ownership
 Statement**
 All design work remains the property of the architect and may not be utilized or reproduced without prior written authorization after remittance of compensation.



NOT FOR CONSTRUCTION

Copyright Protection

All drawings, specifications, and other documents ("documents" hereinafter) are protected under IT U.S.C. § 102. The design professional responsible for the preparation of the documents retains all statutory rights, common law rights, and intellectual property rights. The documents shall not be released, duplicated, copied or used by any person or entity without the express written consent of the design professional. Authorized use of electronic documents does not guarantee the information contained in the electronic documents is current, complete or accurate. It is the responsibility of all document users to verify with the design professional the documents (print or electronic) in question are the most current, complete and accurate documents available. All documents are for exclusive use on the referenced project only.

Applicability Disclaimer

This is a comprehensive set of working drawings and specifications. Some drawings and/or specifications may not be applicable to this specific project. It is the responsibility of every Contractor, Sub-Contractor, Vendor, and Supplier to review all drawings and/or specifications to determine their applicability to this specific project. Present the Architect with all applicability questions prior to bidding. Failure to comply with this requirement will be held liable for rejecting associated change order requests. If a specified product is no longer available it shall be the Contractor, Sub-Contractor, Vendor or Supplier's responsibility to provide an equal substitution. The Architect reserves the sole right to determine the suitability of proposed substitutions.

Sheet Content

**Architectural
 Building Elevations**

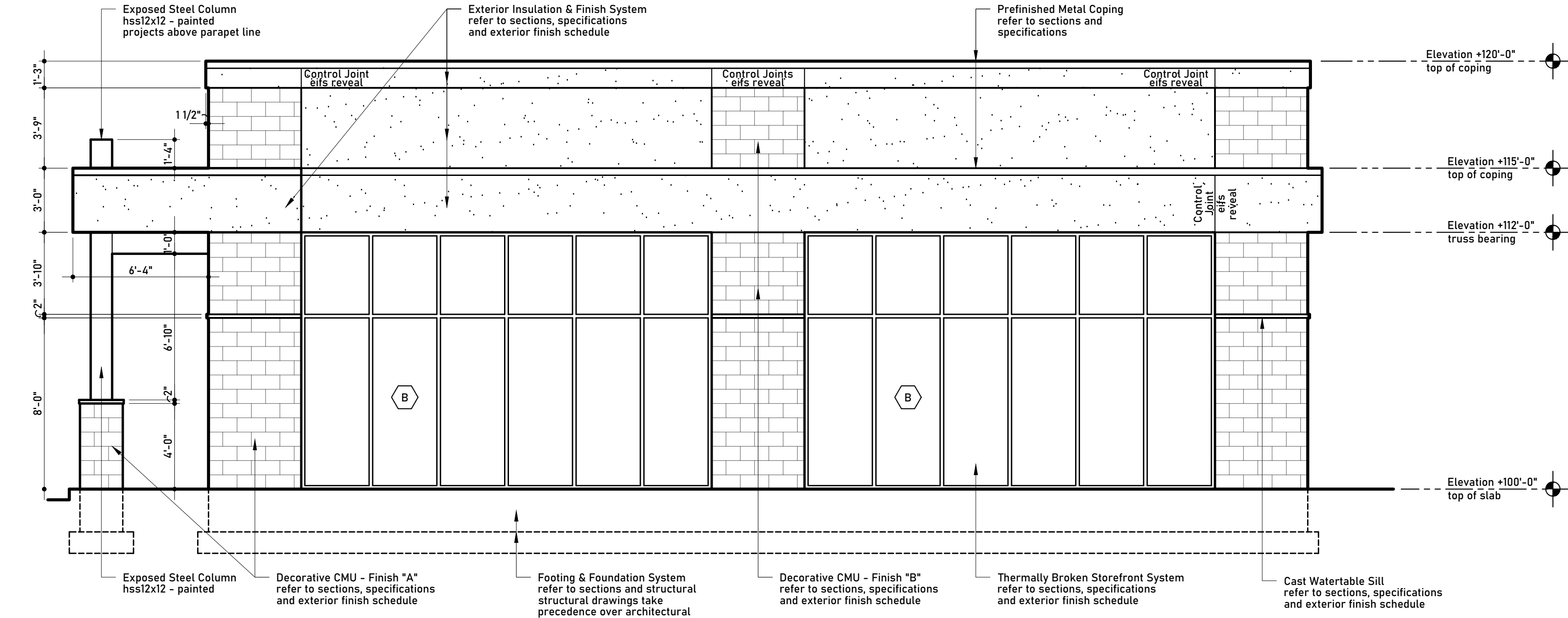
Sheet Revisions

No.	Brief Description Of Revision	Date

Drawing Information

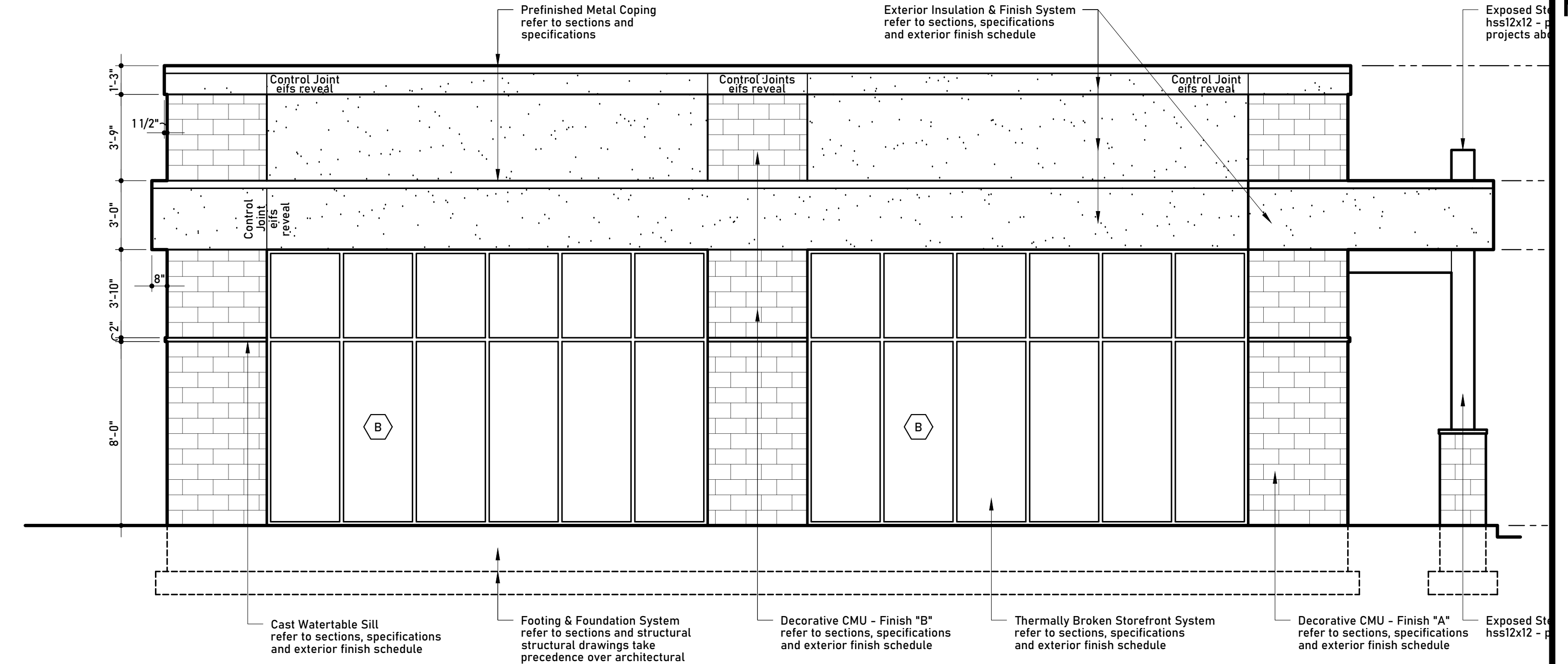
Architect's Project No.	Drawing Sheet No.
ARCH217	
Original Print Date	
2021 1-14	
Date of This Print	
Consultation Phase	
Construction Documents	

A4.1



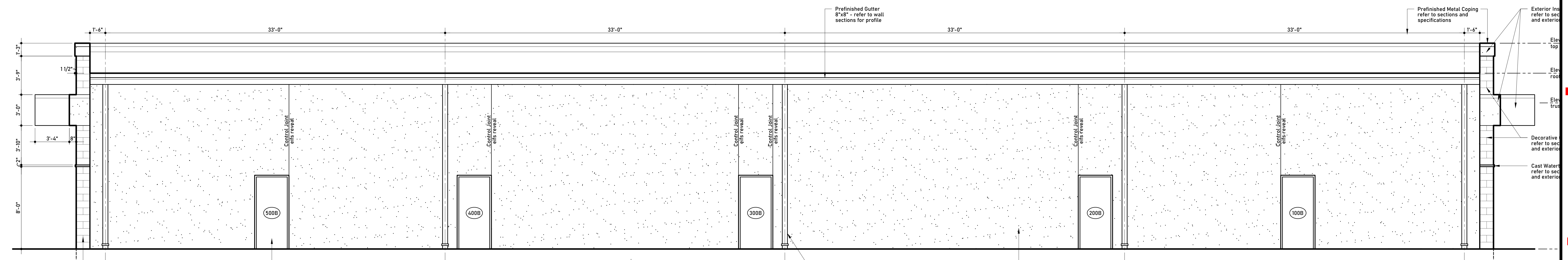
East Elevation

Scale: 1/4" = 1'-0"



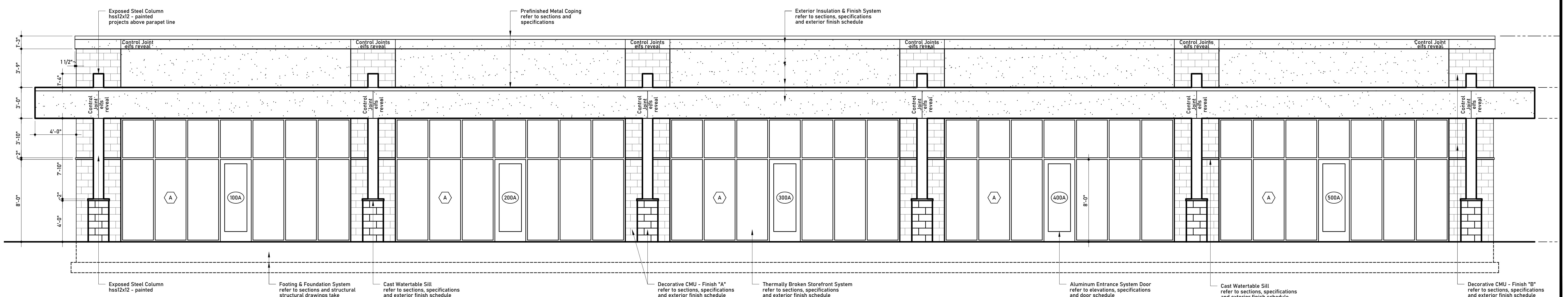
West Elevation

Scale: 1/4" = 1'-0"



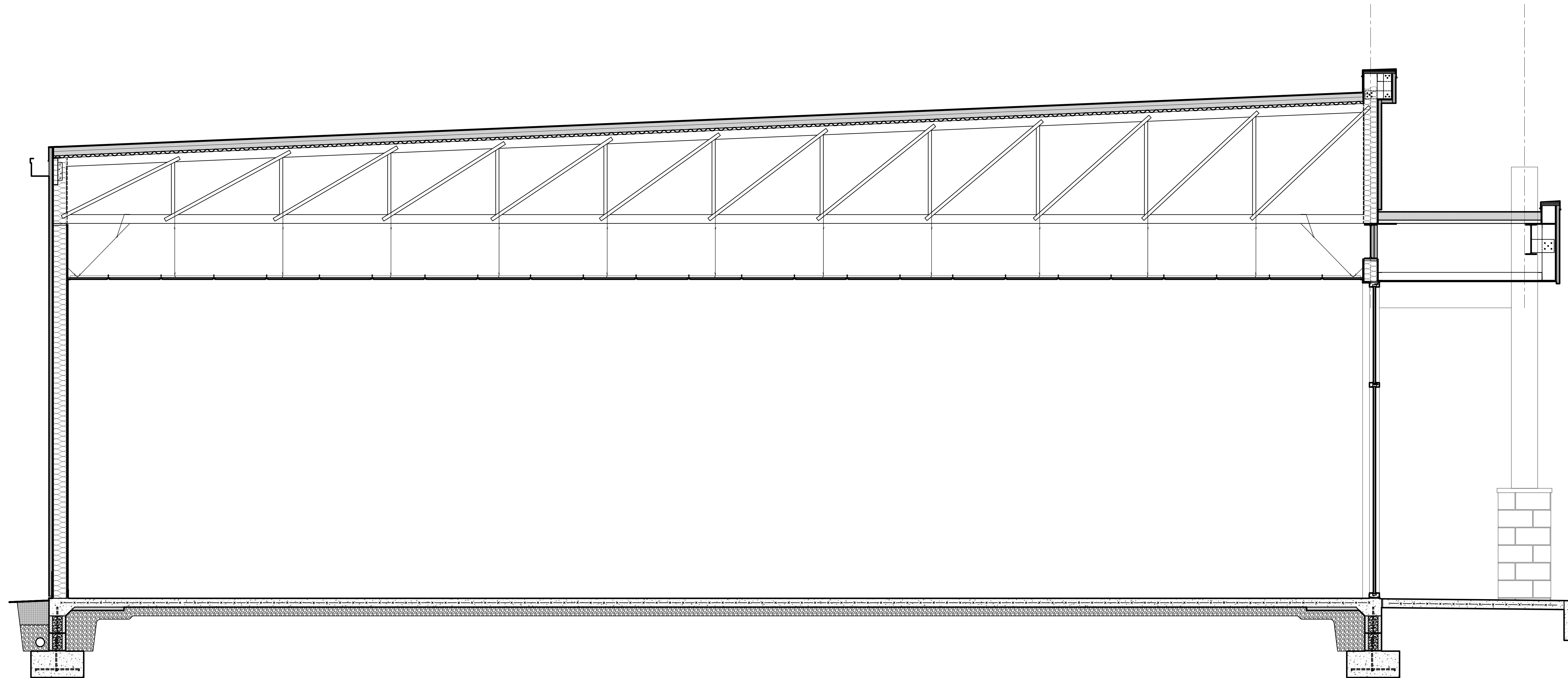
North Elevation

Scale: 1/4" = 1'-0"

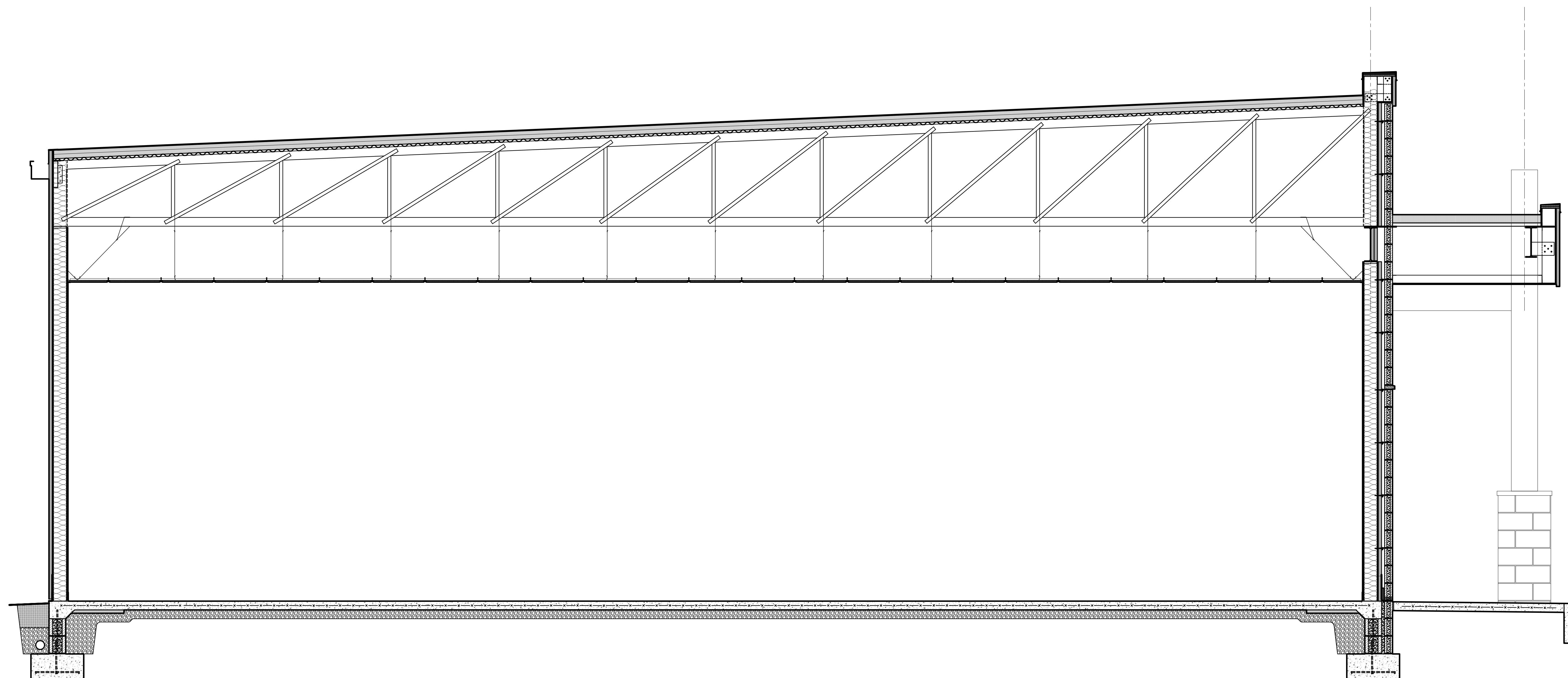


South Elevation

Scale: 1/4" = 1'-0"



Building Section A-A
Scale: 1/2" = 1'-0"



Building Section B-B
Scale: 1/2" = 1'-0"

Project Information
HEM Properties

Columbia Plaza
Prospective
Multi-Tenant Building
7300 Columbia Street
Evansville, Indiana 47715

Client
HEM Properties
Newburgh, Indiana 47630

Architect
DANCO
CONSTRUCTION, INC.
4585 Leachman Drive Evansville, IN 47715 (812) 479-3000
3201 Interstate Drive Evansville, IN 47715 (812) 479-7000
113 East 2nd Street Evansville, IN 47715 (219) 691-1000

Associated Engineers
Civil Engineer

Structural Engineer

HVAC & Plumbing Engineer

Professional Certification
Design Ownership Statement
All design work remains the property of the architect and may not be utilized or reproduced without prior written authorization after remittance of compensation.



NOT FOR CONSTRUCTION

Copyright Protection
All drawings, specifications, and other documents ("documents" hereinafter) are protected under IT U.S.C. § 102. The design professional responsible for the preparation of the documents retains all statutory rights, common law rights, and intellectual property rights. The documents shall not be released, duplicated, copied or used by any person or entity without the express written consent of the design professional. Authorized use of electronic documents does not guarantee the information contained in the electronic documents is current, complete or accurate. It is the responsibility of all document users to verify with the design professional the documents (print or electronic) in question are the most current, complete and accurate documents available. All documents are for exclusive use on the referenced project only.

Applicability Disclaimer
This is a comprehensive set of working drawings and specifications. Some drawings and/or specifications may not be applicable to this specific project. It is the responsibility of every Contractor, Sub-Contractor, Vendor, and Supplier to review all drawings and/or specifications to determine their applicability to this specific project. Present the Architect with all applicability questions prior to bidding. Failure to comply with this requirement will be the basis for rejecting associated change order requests. If a specified product is no longer available, it shall be the Contractor, Sub-Contractor, Vendor or Supplier's responsibility to provide an equal substitution. The Architect reserves the sole right to determine the suitability of proffered substitutions.

Sheet Content

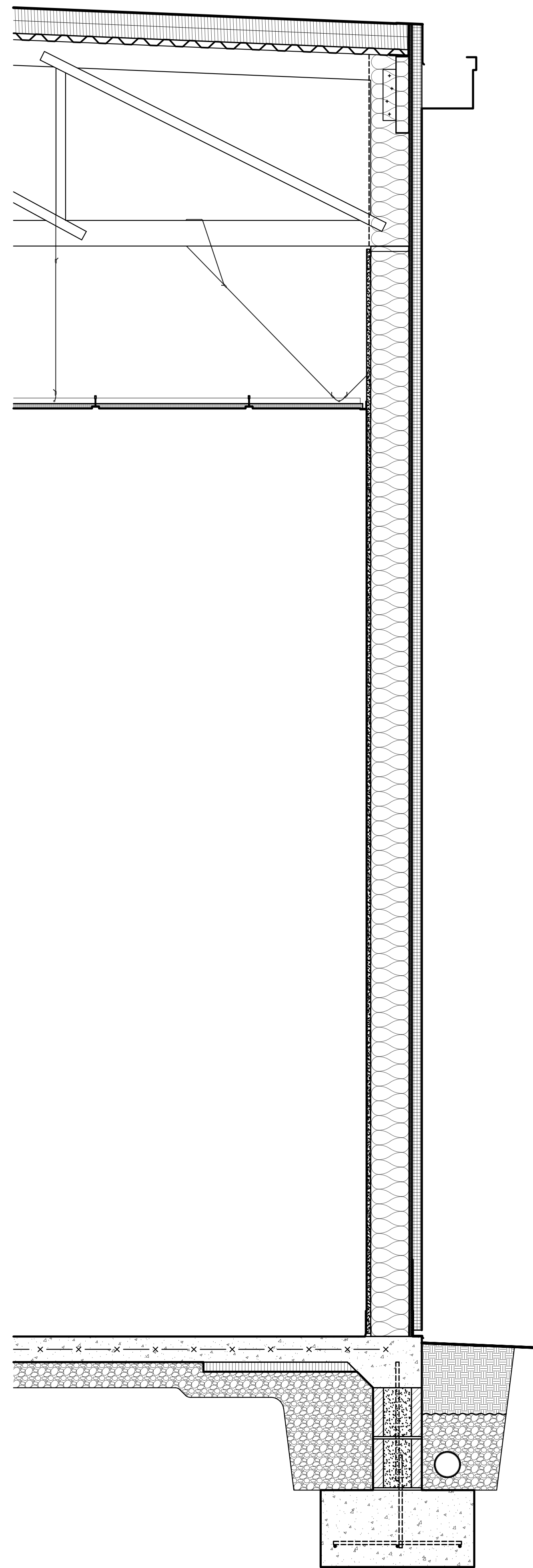
Architectural
Building Sections

Sheet Revisions

No.	Brief Description Of Revision	Date

Drawing Information

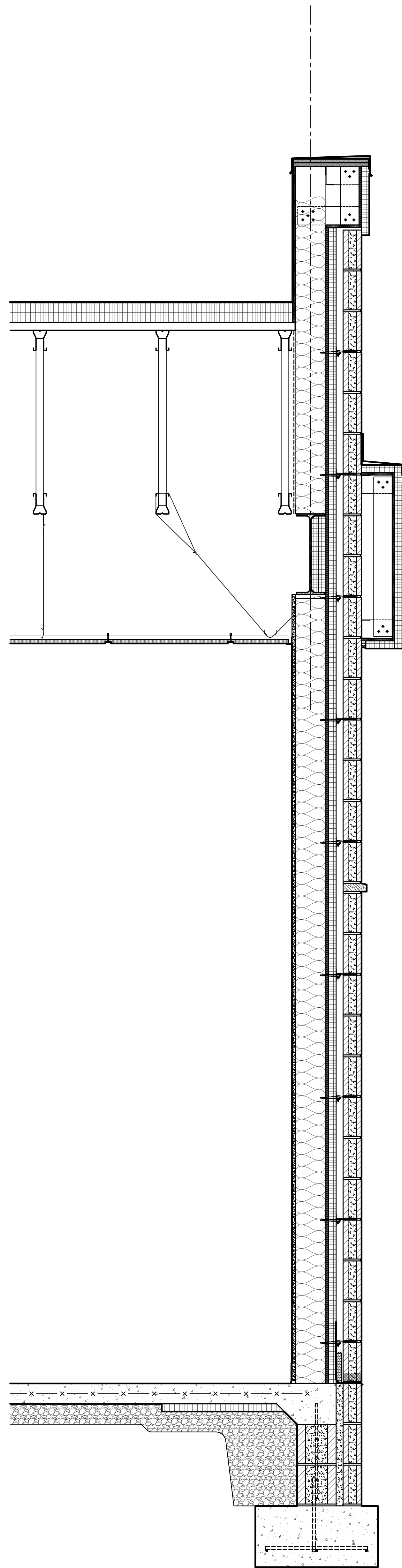
Architect's Project No. **ARCH2117**
Drawing Sheet No. **A5.1**
Original Print Date **2021 1-14**
Date of This Print
Consultation Phase
Construction Documents



1 Wall Section

A6.1

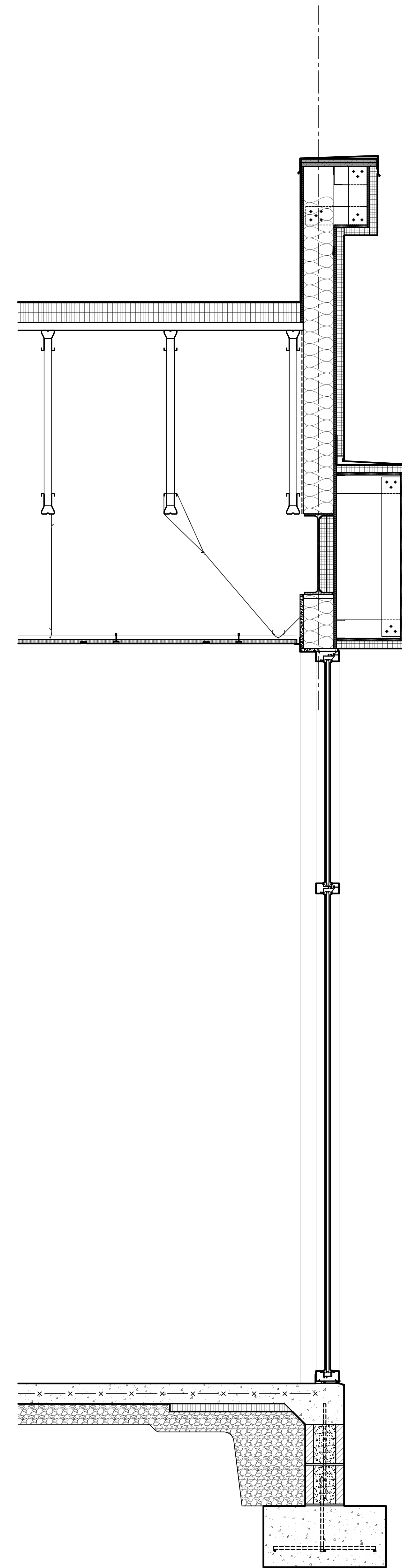
Scale: 1" = 1'-0"



2 Wall Section

A6.1

Scale: 1" = 1'-0"



3 Wall Section

A6.1

Scale: 1" = 1'-0"

Project Information
HEM Properties

**Columbia Plaza
 Prospective
 Multi-Tenant Building**

7300 Columbia Street
 Evansville, Indiana 47715

Client

HEM Properties
 Newburgh, Indiana 47630

Architect



4505 Leachman Drive Evansville, IN 47715 (812) 479-3000
 3201 Interstate Drive Evansville, IN 47715 (812) 479-7000
 113 East 2nd Street Evansville, IN 47715 (317) 691-1000

Associated Engineers

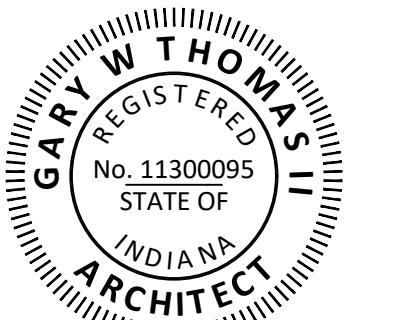
Civil Engineer

Structural Engineer

HVAC & Plumbing Engineer

Professional Certification
**Design Ownership
 Statement**

All design work remains the property of the architect and may not be utilized or reproduced without prior written authorization after remittance of compensation.



NOT FOR CONSTRUCTION

Copyright Protection

All drawings, specifications, and other documents ("documents" hereafter) are protected under IT U.S.C. § 102. The design professional responsible for the preparation of the documents retains all statutory rights, common law rights, and intellectual property rights. The documents shall not be released, duplicated, copied or used by any person or entity without the express written consent of the design professional. Authorized use of electronic documents does not guarantee the information contained in the electronic documents is current, complete or accurate. It is the responsibility of all document users to verify with the design professional the documents (print or electronic) in question are the most current, complete and accurate documents available. All documents are for exclusive use on the referenced project only.

Applicability Disclaimer

This is a comprehensive set of working drawings and specifications. Some drawings and/or specifications may not be applicable to this specific project. It is the responsibility of every Contractor, Sub-Contractor, Vendor, and Supplier to review all drawings and/or specifications to determine their applicability to this specific project. Present the Architect with all applicability questions prior to bidding. Failure to comply with this requirement will be the basis for rejecting associated change order requests. If a specified product is no longer available, it shall be the Contractor, Sub-Contractor, Vendor or Supplier's responsibility to provide an equal substitution. The Architect reserves the sole right to determine the suitability of proffered substitutions.

Sheet Content

Architectural
 Wall Sections

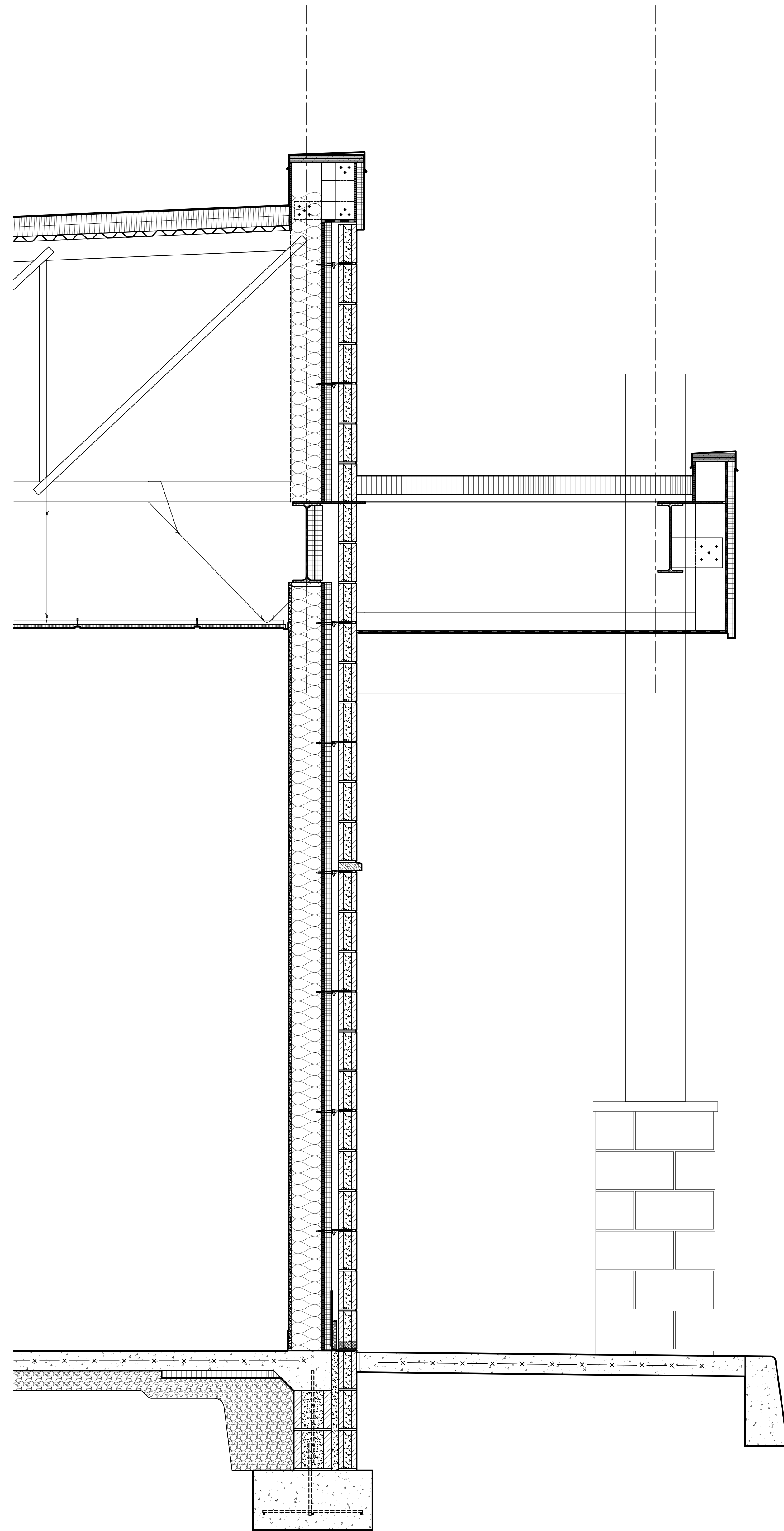
Sheet Revisions

No.	Brief Description Of Revision	Date

Drawing Information

Architect's Project No.	Drawing Sheet No.
ARCH2117	
Original Print Date	
2021 1-14	
Date of This Print	
Construction Phase	
Construction Documents	

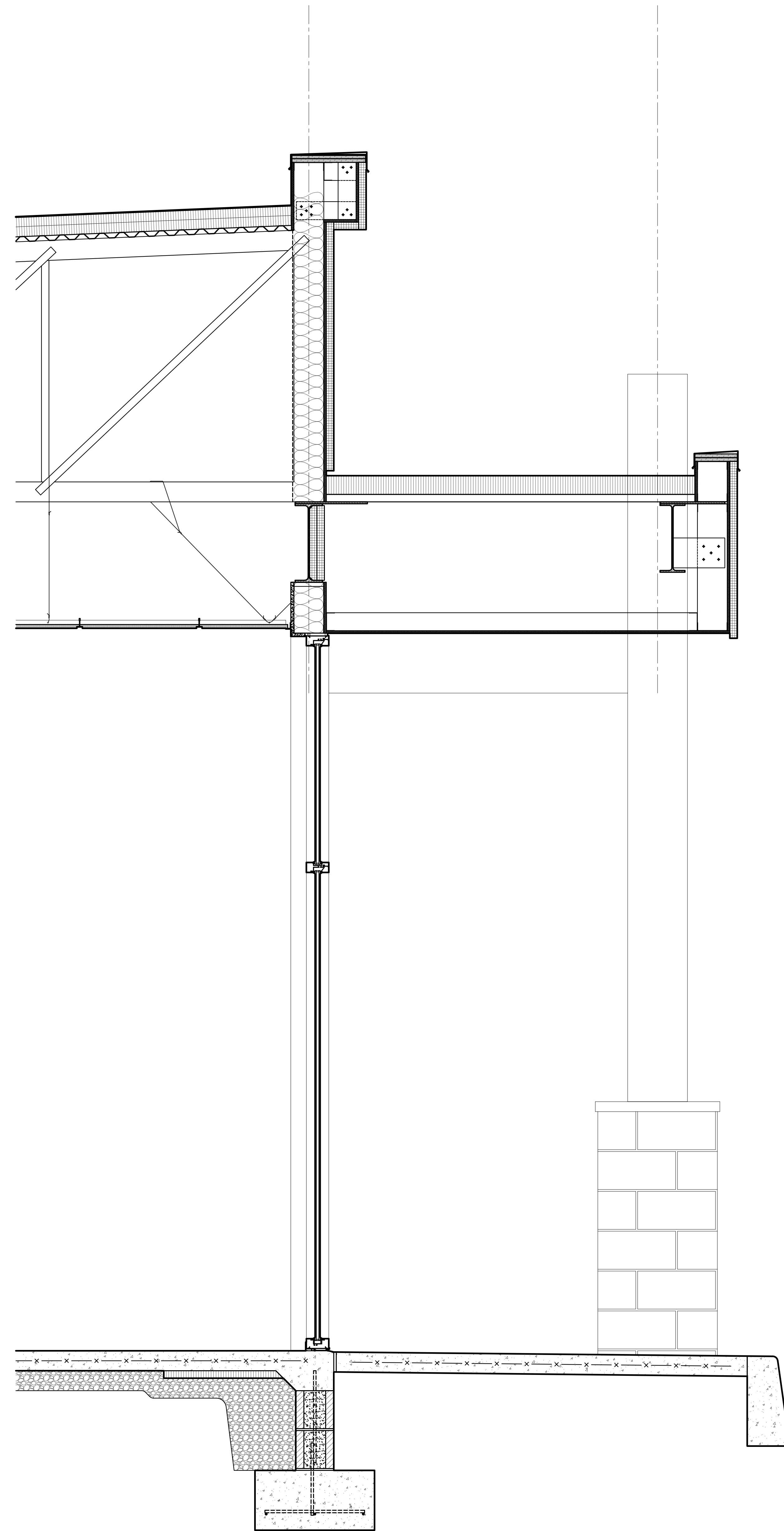
A6.1



1 Wall Section

A6.2

Scale: 1" = 1'-0"



2 Wall Section

A6.2

Scale: 1" = 1'-0"

Project Information
HEM Properties

**Columbia Plaza
 Prospective
 Multi-Tenant Building**

7300 Columbia Street
 Evansville, Indiana 47715

Client

HEM Properties
 Newburgh, Indiana 47630

Architect



6505 Leashman Drive Evansville, IN 47715 (812) 479-3000
 3201 Interstate Drive Evansville, IN 47715 (812) 479-7000
 113 East 2nd Street Owensboro, KY 40303 (502) 691-1000

Associated Engineers

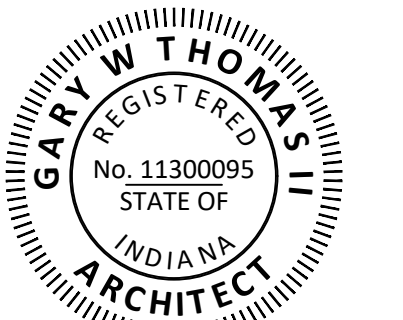
Civil Engineer

Structural Engineer

HVAC & Plumbing Engineer

Professional Certification
**Design Ownership
 Statement**

All design work remains the property of the architect and may not be utilized or reproduced without prior written authorization after remittance of compensation.



NOT FOR CONSTRUCTION

Copyright Protection

All drawings, specifications, and other documents ("documents" hereinafter) are protected under IT U.S.C. § 102. The design professional responsible for the preparation of the documents retains all statutory rights, common law rights, and intellectual property rights. The documents shall not be released, duplicated, copied or used by any person or entity without the express written consent of the design professional. Authorized use of electronic documents does not guarantee the information contained in the electronic document is current, complete or accurate. It is the responsibility of all document users to verify with the design professional the documents (print or electronic) in question are the most current, complete and accurate documents available. All documents are for exclusive use on the referenced project only.

Applicability Disclaimer

This is a comprehensive set of working drawings and specifications. Some drawings and/or specifications may not be applicable to this specific project. It is the responsibility of every Contractor, Sub-Contractor, Vendor, and Supplier to review all drawings and/or specifications to determine their applicability to this specific project. Present the Architect with all applicability questions prior to bidding. Failure to comply with this requirement will be the basis for rejecting associated change order requests. If a specified product is no longer available it shall be the Contractor, Sub-Contractor, Vendor or Supplier's responsibility to provide an equal substitution. The Architect reserves the sole right to determine the suitability of proffered substitutions.

Sheet Content

**Architectural
 Wall Sections**

Sheet Revisions

No.	Brief Description Of Revision	Date

Drawing Information

Architect's Project No.	Drawing Sheet No.
ARCH2117	A6.2
Original Print Date	
2021 1-14	
Date of This Print	
Consultation Phase	
Construction Documents	