

±17,000 SF CAN BE EXPANDED TO ±24,000 SF

890 N. STATE RD. 7 | HOLLYWOOD, FL 33024

SIGNALIZED INTERSECTION



Data SIO, NOAA, U.S. Navy, NGA, GEBCO

Google Earth

DAVID EGGNATZ

Director

DavidEgnatz@dkatz.com

(561) 869-4344

DANIEL SOLOMON, CCIM

Principal

DanielSolomon@dkatz.com

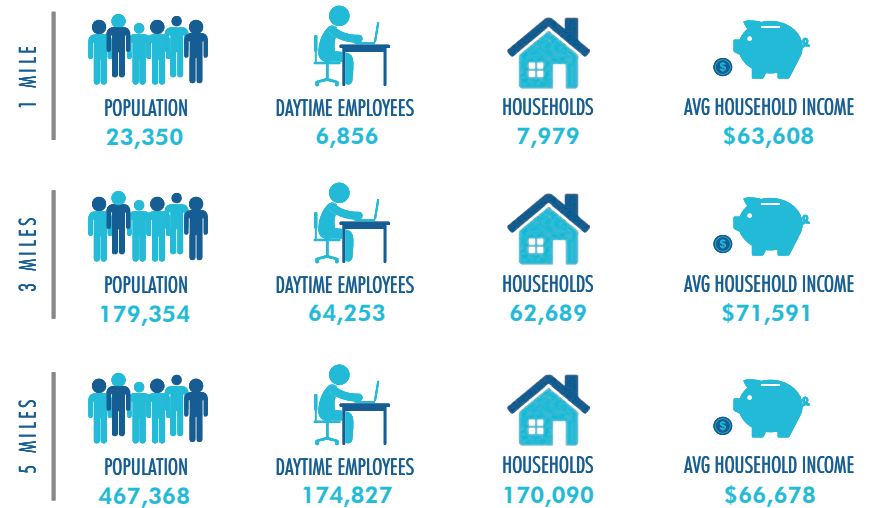
(561) 869-4351

HIGHLIGHTS

- ±3.1 acres available
- ±17,017 SF available on the Southwest Corner of Johnson St. (20,000 VPD) & SR 7 (35,000 VPD)
- Additional 8,500 SF approved for a total of approximately 25,500 SF
- Multiple access points off of Johnson St. & SR 7 situated at the lighted intersection
- Ideal uses: Retail, Medical/Urgent Care, Fast Food, and QSR
- Notable surrounding retailers and restaurants:



DEMOGRAPHICS



KATZ & ASSOCIATES



AERIAL | TRADE

890 N. STATE RD. 7
HOLLYWOOD, FL 33024