

INTERQUEST MEDICAL/OFFICE BUILDING

NWC OF INTERQUEST PARKWAY & VOYAGER PARKWAY
COLORADO SPRINGS, CO 80920



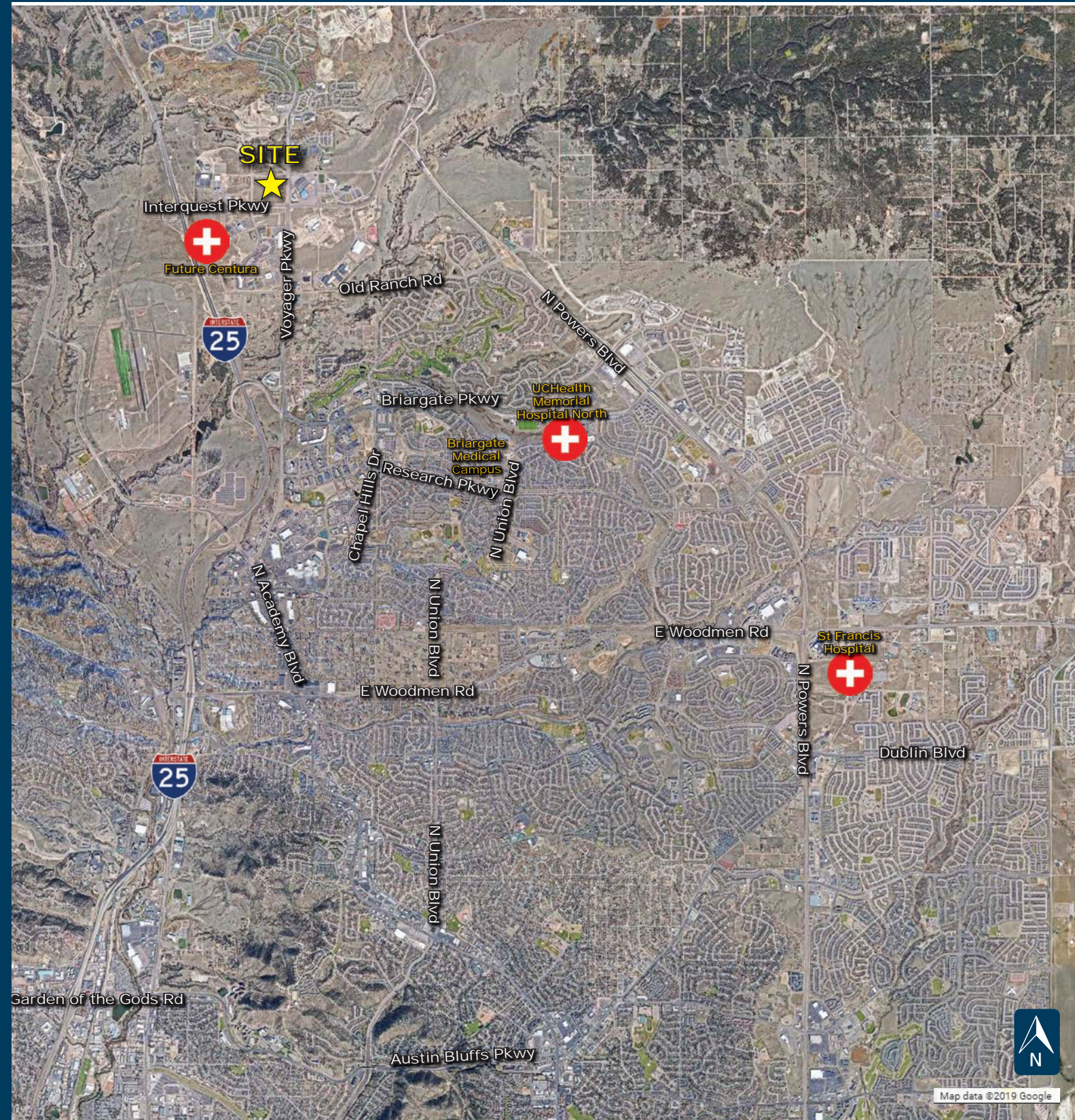
PAUL RUBLEY
Healthcare Advisory

INTERQUEST MEDICAL/OFFICE BUILDING
NWC OF INTERQUEST PARKWAY & VOYAGER PARKWAY
COLORADO SPRINGS, CO 80920

NOW PRE-LEASING
Q2 2021 DELIVERY



* Subject to change.



PROPERTY DETAILS

Rate:	Contact broker
Building Size:	65,000 SF
Available Space:	1,800 - 32,500 SF
TI:	Contact broker
Parking:	5/1,000 ratio Physician covered parking available
NNN:	\$11.00 PSF estimated
Number of Stories:	4
Floor Plates:	16,250 SF

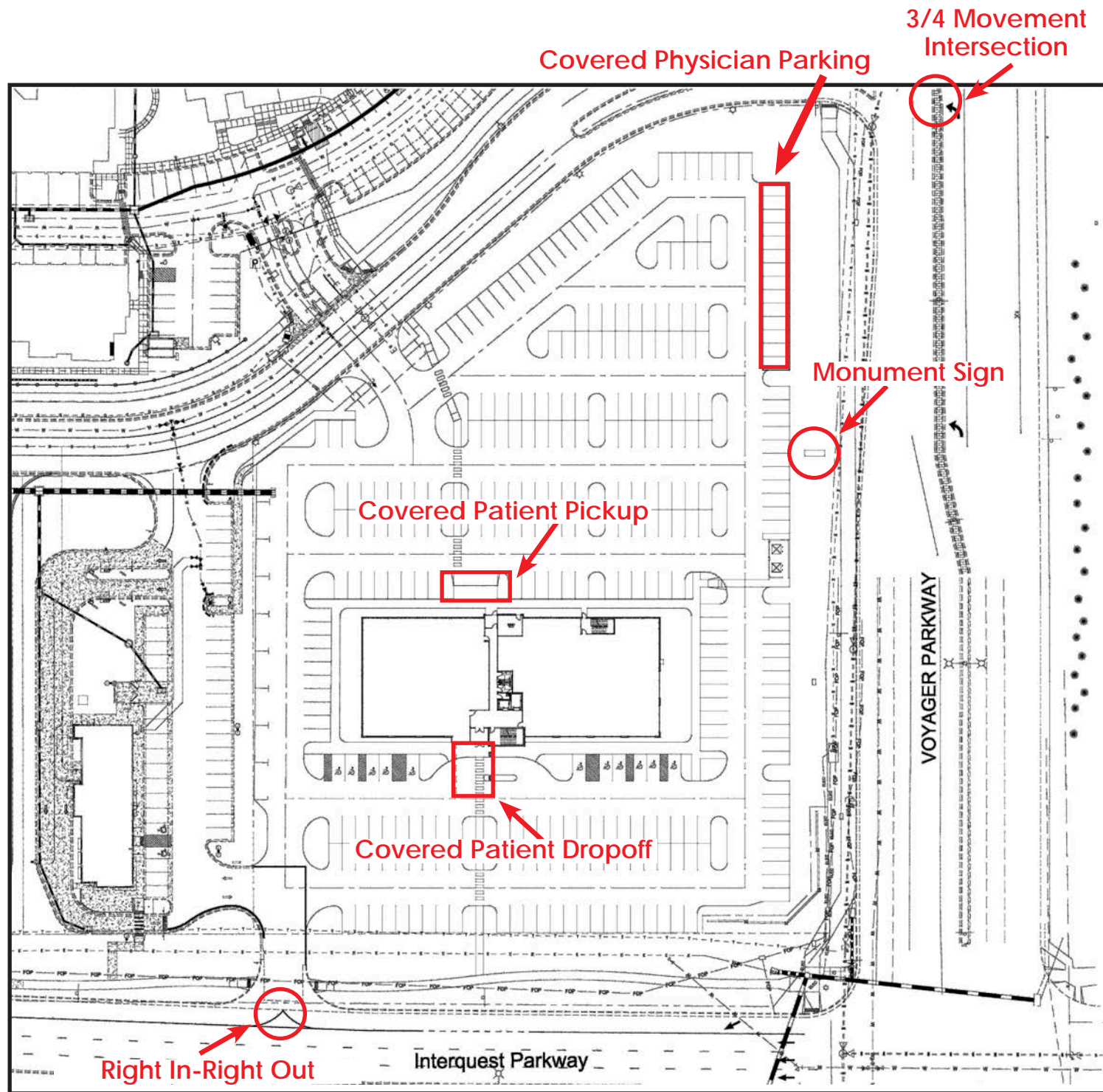
COMMENTS

- Excellent visibility medical office building in the fastest growing corridor in Colorado Springs
- Monument signage available
- Physician covered parking
- Excellent co-tenancy
- Surrounded by retail and restaurants



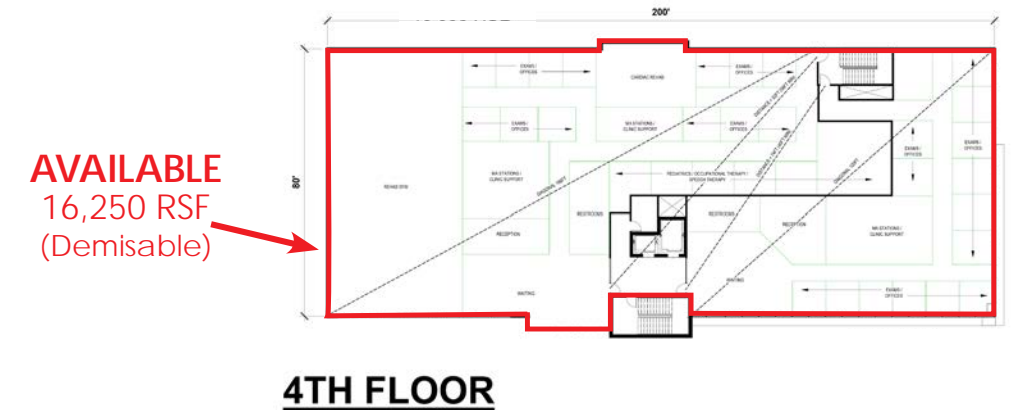
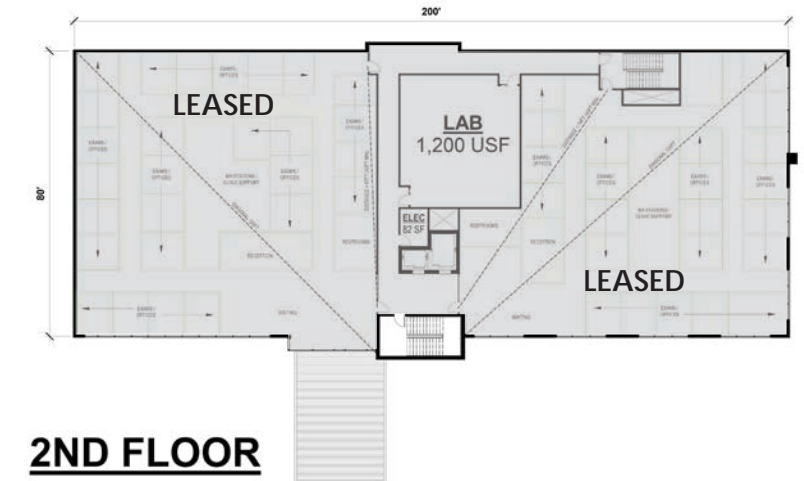
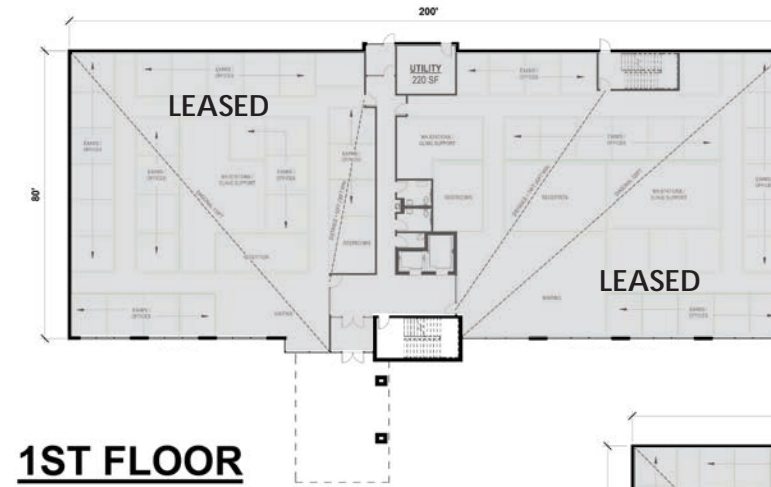
Paul Rubley
paulrubley@olivereg.com

SITE PLAN



* Subject to change.

FLOOR PLANS



* Subject to change.