

Results Driven Retail SolutionsSM

Barnard Commercial
Real Estate

Hillsboro Center

938—980 SE Oak Street, Hillsboro, OR 97123

Centrally located retail and office building in Hillsboro at the corner of Oak Street and 10th Avenue. This building has **high traffic, plenty of parking and exterior signage**. Average daily traffic on 10th Avenue is **28,000 cars per day** and **17,200 cars per day** on SE Oak Street. Neighboring tenant's include Goodwill, Human Bean Coffee, Tuality Health, Super Mercado and several others. Additional parking for employees available across 9th Avenue.



Available:

Suite 936—3,251 SF
**Space is divisible*
\$22.00 SF/Year, NNN
NNN approx. \$5.50 SF/Year

2nd Floor
2,244 SF
\$19.00 SF/Year, Gross



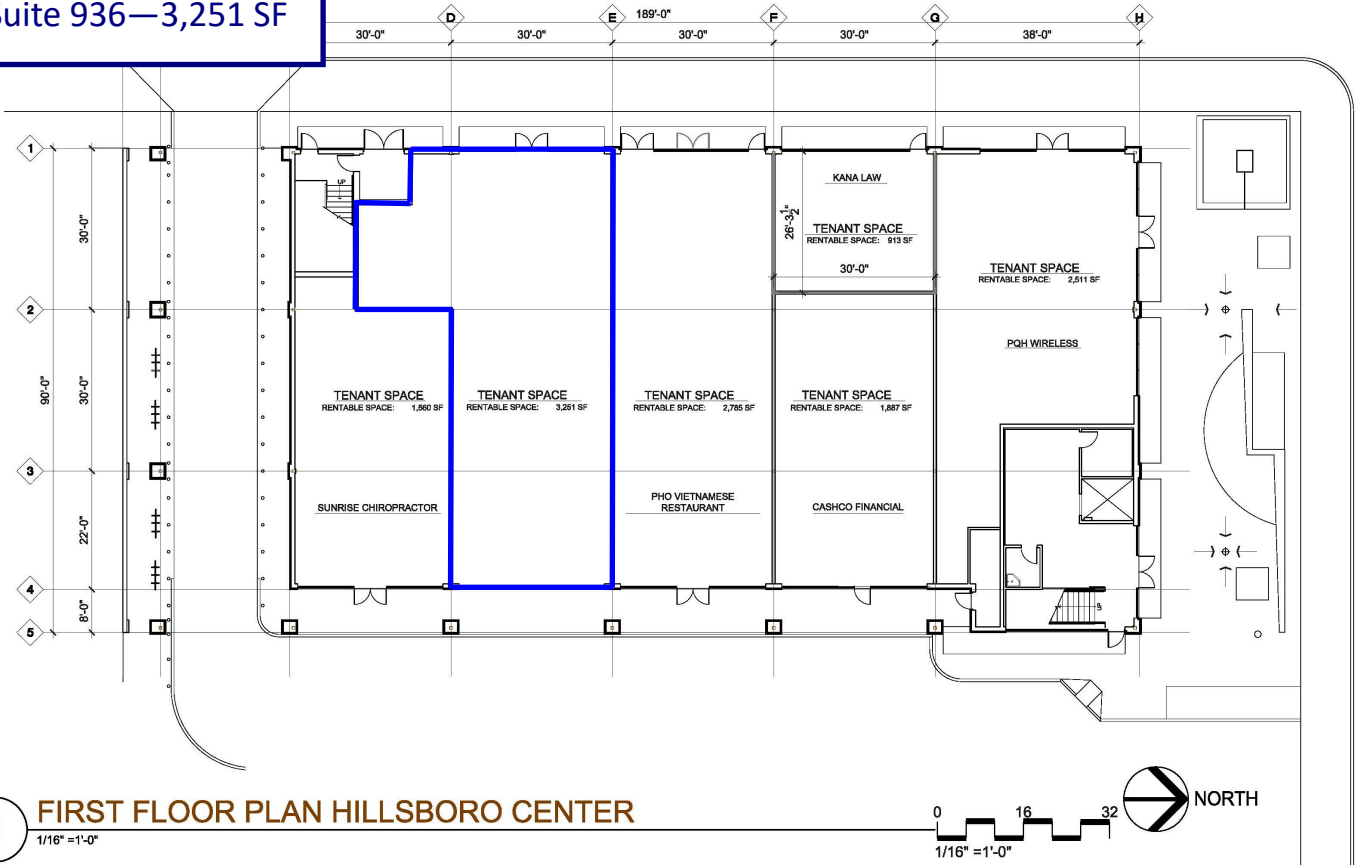
Ashley Rhea | 503.616.2942 D | 503.675.0900 O | Email: ashley@barnardcommercial.com
www.barnardcommercial.com | Mail: 5200 Meadows Road, Suite 150, Lake Oswego OR 97035

All information contained herein was obtained from sources deemed reliable. No guarantee is made with respect to accuracy. Specifications subject to change without notice.

Hillsboro Center



Suite 936—3,251 SF



1 FIRST FLOOR PLAN HILLSBORO CENTER

1/16" = 1'-0"

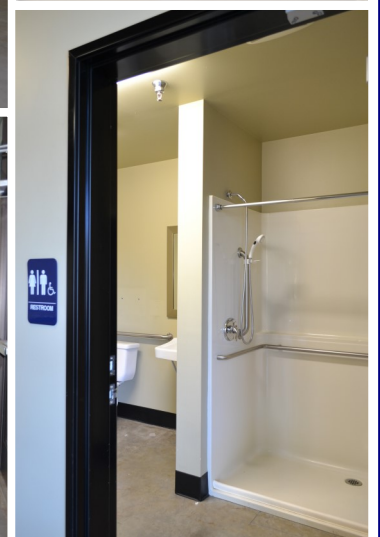
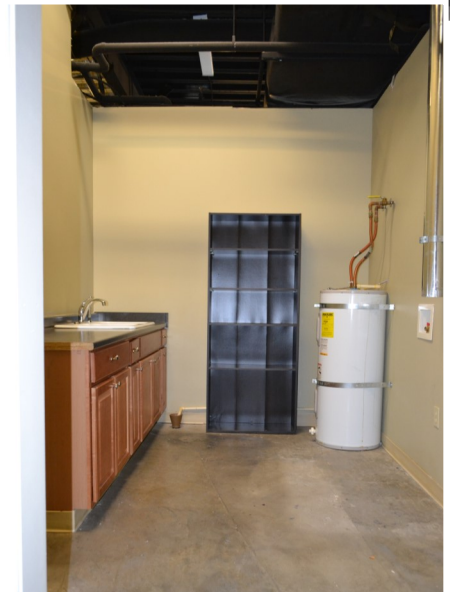
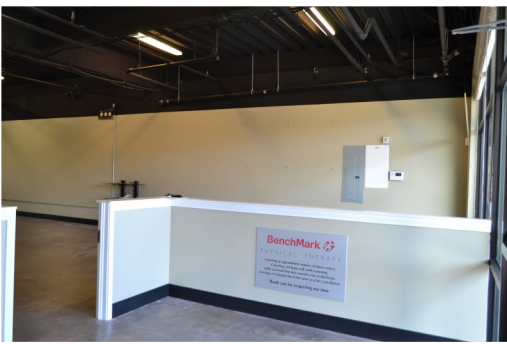
Ashley Rhea | 503.616.2942 D | 503.675.0900 O | Email: ashley@barnardcommercial.com
www.barnardcommercial.com | Mail: 5200 Meadows Road, Suite 150, Lake Oswego OR 97035

Results Driven Retail SolutionsSM

Barnard Commercial
Real Estate

Hillsboro Center

Suite 936—3,251 SF



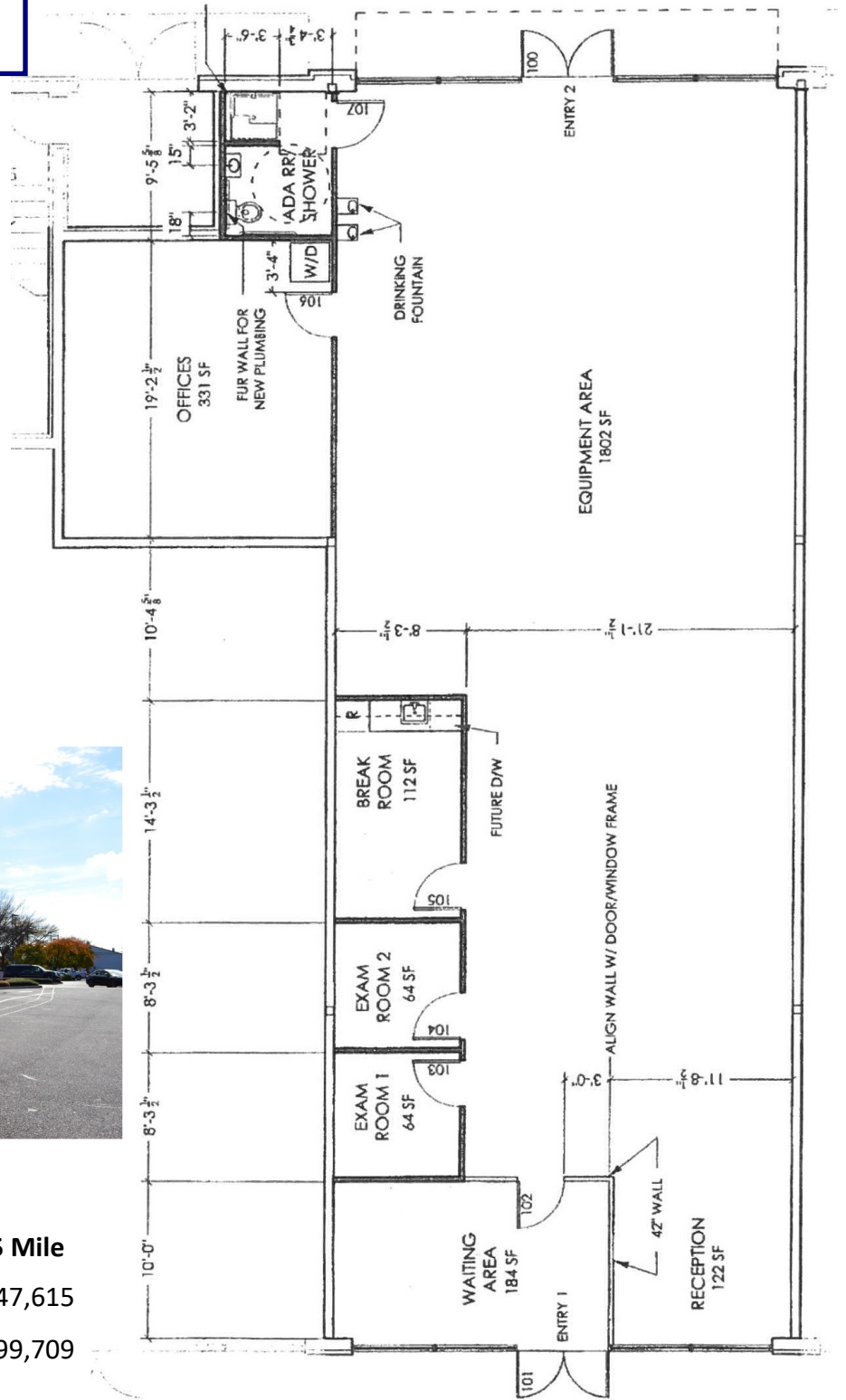
Ashley Rhea | 503.616.2942 D | 503.675.0900 O | Email: ashley@barnardcommercial.com
www.barnardcommercial.com | Mail: 5200 Meadows Road, Suite 150, Lake Oswego OR 97035

All information contained herein was obtained from sources deemed reliable. No guarantee is made with respect to accuracy. Specifications subject to change without notice.

Hillsboro Center

Suite 936—3,251 SF

Your Sign Here



Demographics

	1 Mile	3 Mile	5 Mile
Population:	22,276	77,531	147,615
Average HH Income:	\$71,168	\$102,573	\$99,709

Ashley Rhea | 503.616.2942 D | 503.675.0900 O | Email: ashley@barnardcommercial.com
www.barnardcommercial.com | Mail: 5200 Meadows Road, Suite 150, Lake Oswego OR 97035

Hillsboro Center

Common area entrance
Stairs & elevator served



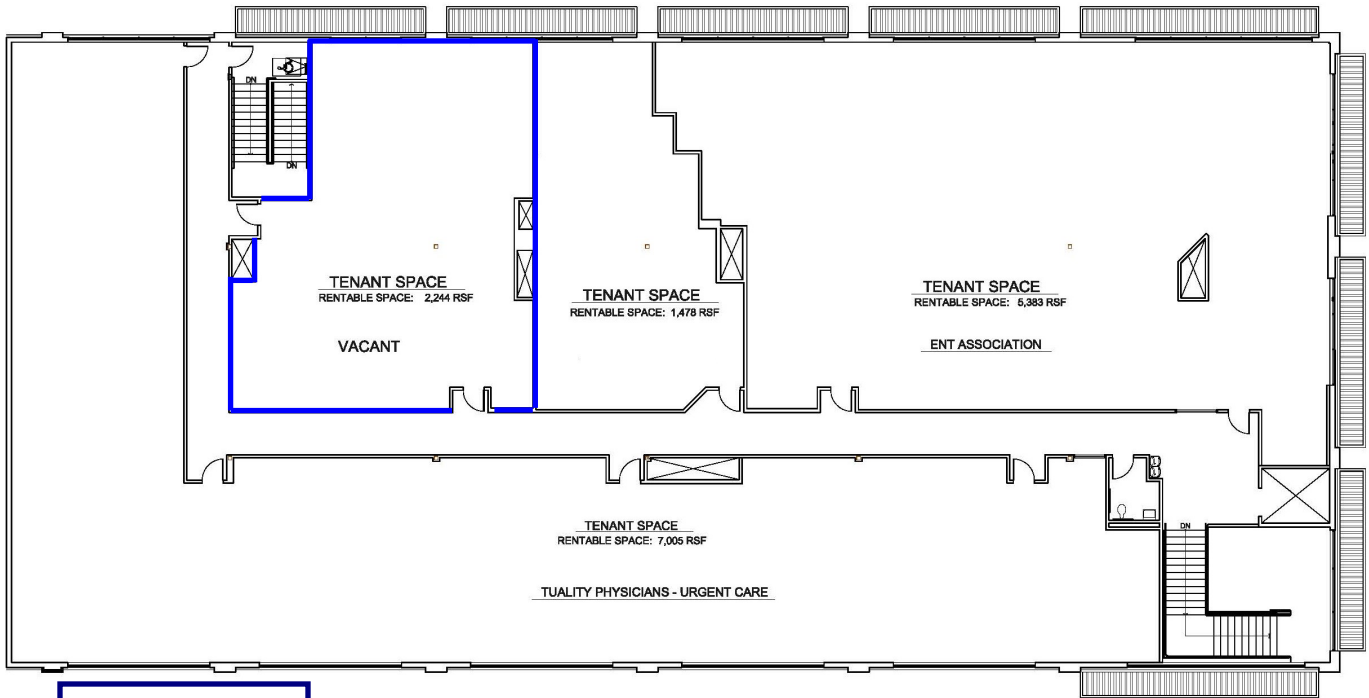
2nd Floor
2,244 SF

- One private office
- Two large workspace rooms
- One restroom

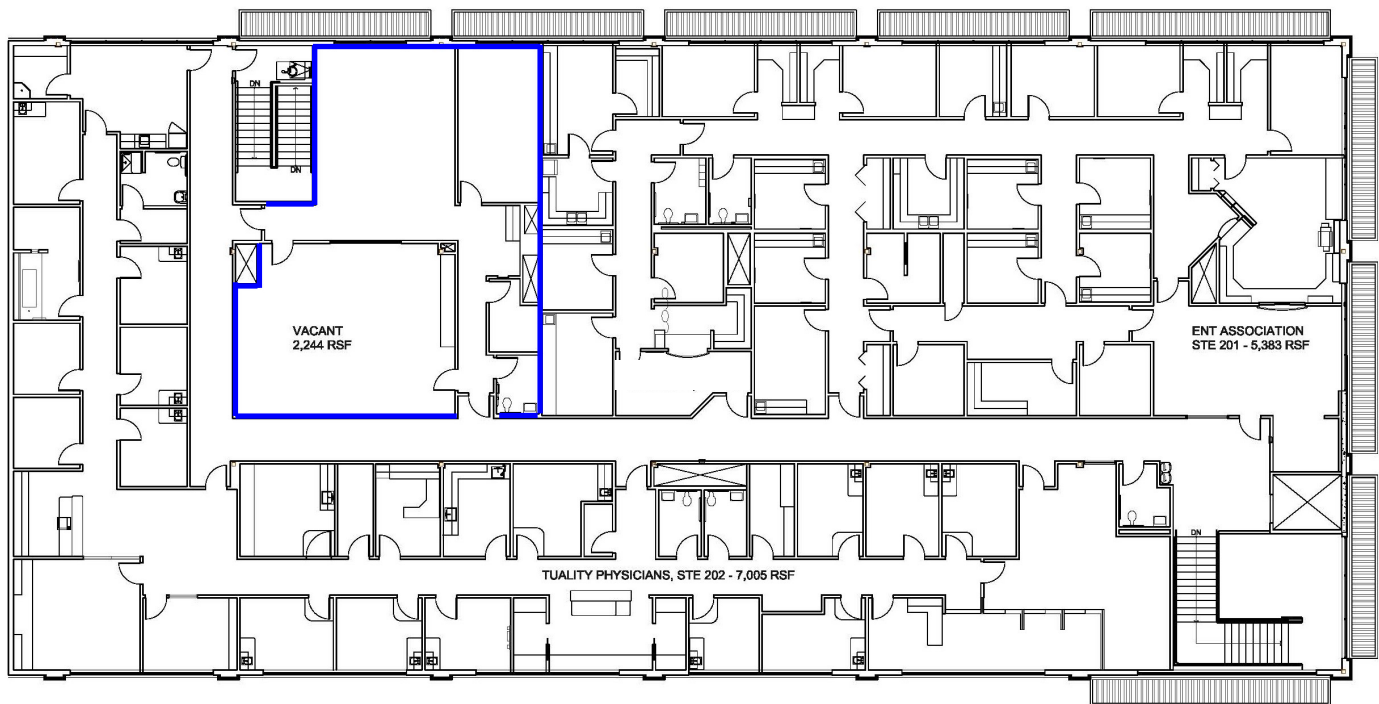


Ashley Rhea | 503.616.2942 D | 503.675.0900 O | Email: ashley@barnardcommercial.com
www.barnardcommercial.com | Mail: 5200 Meadows Road, Suite 150, Lake Oswego OR 97035

Hillsboro Center



2nd Floor
2,244 SF



Ashley Rhea | 503.616.2942 D | 503.675.0900 O | Email: ashley@barnardcommercial.com
www.barnardcommercial.com | Mail: 5200 Meadows Road, Suite 150, Lake Oswego OR 97035