

# Oak Hill Flex | Industrial Building | Land

8739 W. US Highway 290, Austin, TX, 78736

FOR SALE

4.68 Acres



- 4808 SF Flex | Industrial Building Fully Leased
- Great Visibility from Highway 290
- Concrete Driveway
- ~700' of frontage on 290
- Development Opportunity
- Septic and Well on site
- Cinder Block Stucco Building
- 5 Minute drive to the Y of Oak Hill
- 10 Minute drive to new Belterra development

**BRYCEN FOREMAN**

(512) 694-7193

[brycen@capellatx.com](mailto:brycen@capellatx.com)

**Price: Please Call**



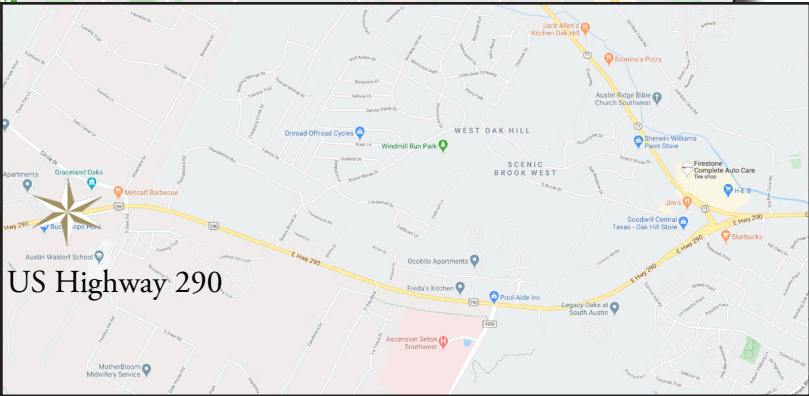
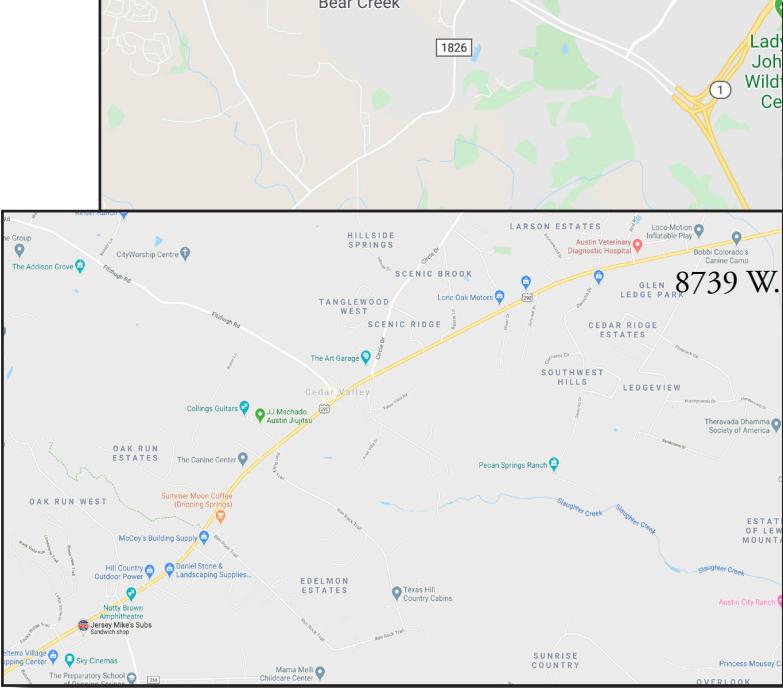
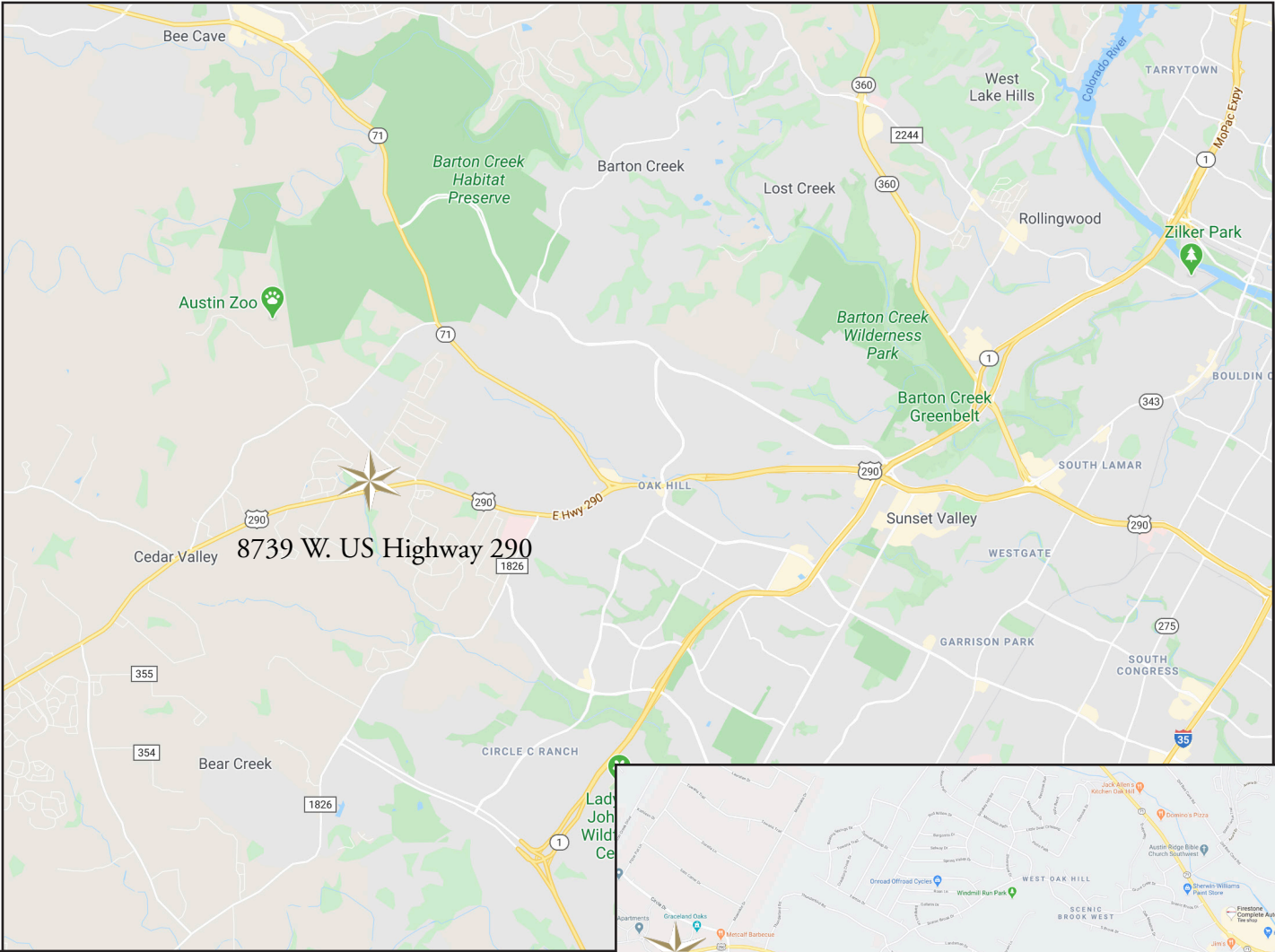
**CAPELLA COMMERCIAL, LLC.**  
REAL ESTATE SERVICES

Capella Commercial is a licensed commercial real estate broker in the state of Texas. All square footage measurements are approximate; images not to scale. Rate and availability subject to change without notice. The information contained herein and incorporated by hyperlink is from sources believed to be reliable; however, Capella Commercial makes no claims, guarantees or warranties as to its accuracy or completeness. © 2016 Capella Commercial, LLC

# Oak Hill Flex | Industrial Building | Land

8739 W. US Highway 290, Austin, TX, 78736

## Property Map



### Notable Surroundings

- HEB
- Starbucks
- Ascension Seton Southwest
- Jack Allen's Kitchen
- Austin Veterinary Diagnostic Hospital
- Austin Waldorf School
- Belterra Village Shopping Center
- + More

**BRYCEN FOREMAN**  
(512) 694-7193  
brycen@capellatx.com

Price: Please Call



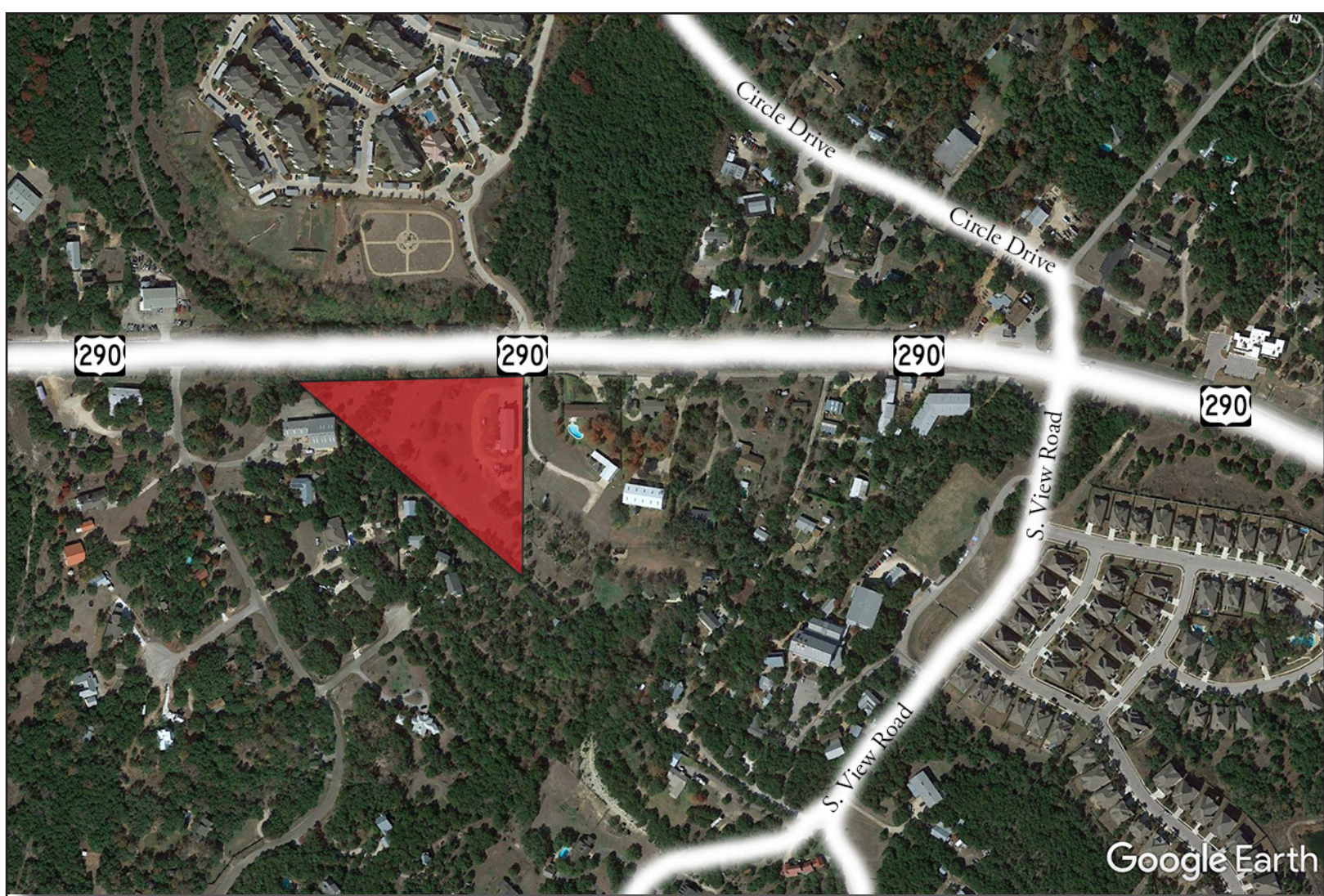
CAPELLA COMMERCIAL, LLC.  
REAL ESTATE SERVICES

Capella Commercial is a licensed commercial real estate broker in the state of Texas. All square footage measurements are approximate; images not to scale. Rate and availability subject to change without notice. The information contained herein and incorporated by hyperlink is from sources believed to be reliable; however, Capella Commercial makes no claims, guarantees or warranties as to its accuracy or completeness. © 2016 Capella Commercial, LLC

# Oak Hill Flex | Industrial Building | Land

8739 W. US Highway 290, Austin, TX, 78736

AERIAL



**BRYCEN FOREMAN**  
(512) 694-7193  
[brycen@capellatx.com](mailto:brycen@capellatx.com)

**Price: Please Call**



**CAPELLA COMMERCIAL, LLC.**  
REAL ESTATE SERVICES

Capella Commercial is a licensed commercial real estate broker in the state of Texas. All square footage measurements are approximate; images not to scale. Rate and availability subject to change without notice. The information contained herein and incorporated by hyperlink is from sources believed to be reliable; however, Capella Commercial makes no claims, guarantees or warranties as to its accuracy or completeness. © 2016 Capella Commercial, LLC

# Oak Hill Flex | Industrial Building | Land

8739 W. US Highway 290, Austin, TX, 78736

FOR SALE

Photos - Exterior



**BRYCEN FOREMAN**  
(512) 694-7193  
[brycen@capellatx.com](mailto:brycen@capellatx.com)

Price: Please Call



Capella Commercial is a licensed commercial real estate broker in the state of Texas. All square footage measurements are approximate; images not to scale. Rate and availability subject to change without notice. The information contained herein and incorporated by hyperlink is from sources believed to be reliable; however, Capella Commercial makes no claims, guarantees or warranties as to its accuracy or completeness. © 2016 Capella Commercial, LLC

# Oak Hill Flex | Industrial Building | Land

8739 W. US Highway 290, Austin, TX, 78736

FOR SALE

Photos - Exterior



**BRYCEN FOREMAN**  
(512) 694-7193  
[brycen@capellatx.com](mailto:brycen@capellatx.com)

Price: Please Call



**CAPELLA COMMERCIAL, LLC.**  
REAL ESTATE SERVICES

Capella Commercial is a licensed commercial real estate broker in the state of Texas. All square footage measurements are approximate; images not to scale. Rate and availability subject to change without notice. The information contained herein and incorporated by hyperlink is from sources believed to be reliable; however, Capella Commercial makes no claims, guarantees or warranties as to its accuracy or completeness. © 2016 Capella Commercial, LLC