

# 61 E. VAN BUREN

RETAIL SPACE AVAILABLE IN THE HEART OF THE LOOP



ALLEN JOFFE

312.275.3120

allen@baumrealty.com

DOUG RENNER

312.275.3137

doug.renner@baumrealty.com

MARK FREDERICKS

312.275.3109

mark@baumrealty.com



# 61 E. VAN BUREN

LOOP RETAIL SPACE AVAILABLE



- ▶ **4,665 SF** available for lease
- ▶ Tremendous foot traffic and numerous public transportation options in the area
- ▶ **Prime location**; less than one block from Michigan Avenue and Grant Park in the heart of the Loop
- ▶ Tens of thousands of office workers, hotels, restaurants in the area and over 95,000 students in the area

## DEMOGRAPHIC SUMMARY

|                          | .25 MILE  | .50 MILE | 1 MILE    |
|--------------------------|-----------|----------|-----------|
| Population               | 4,327     | 15,951   | 62,581    |
| Average Household Income | \$139,961 | 132,069  | \$134,668 |
| Businesses               | 1,575     | 6,245    | 17,643    |
| Daytime Population       | 42,276    | 146,770  | 493,963   |

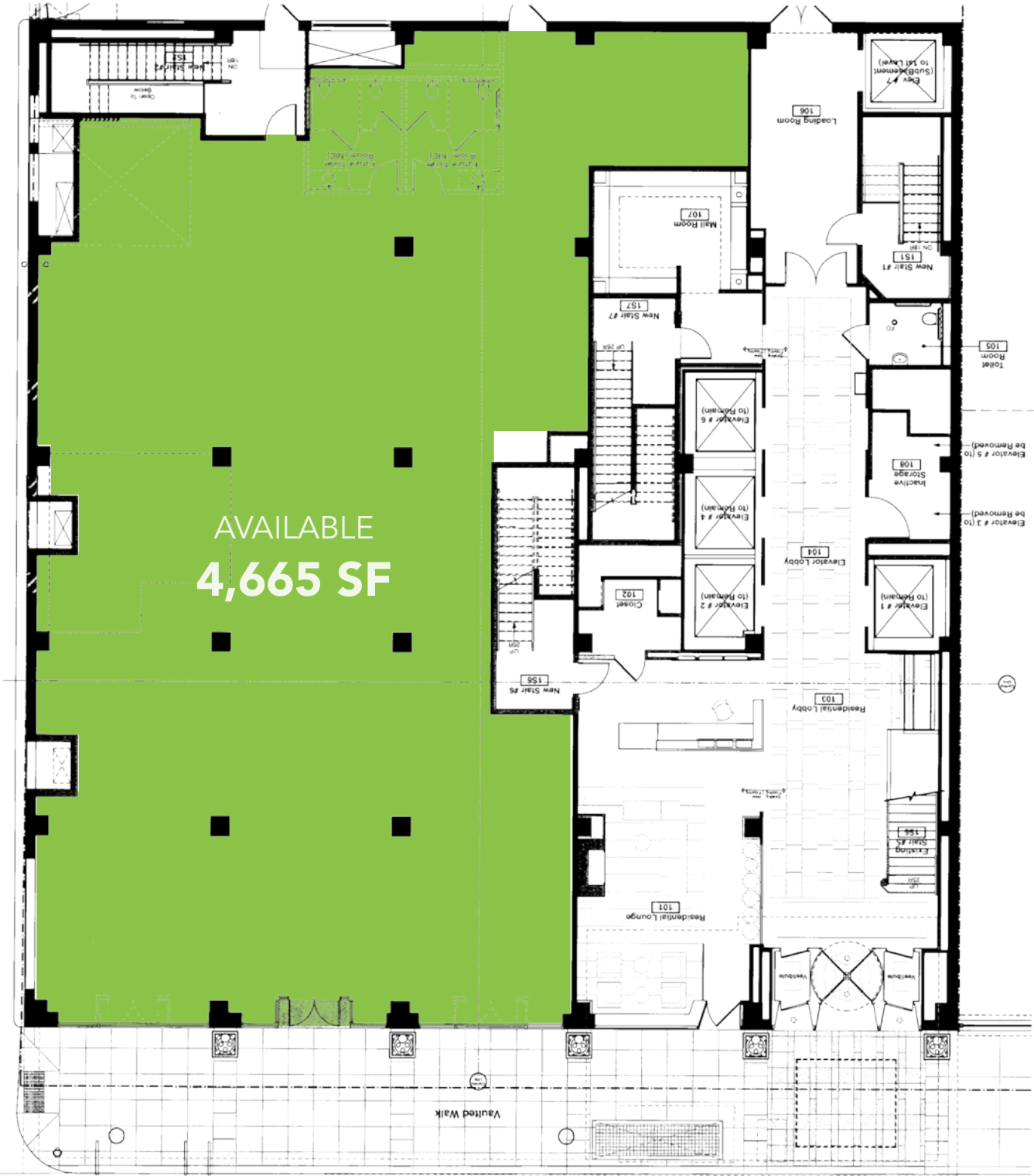
For more information contact:

**ALLEN JOFFE**      312.275.3120      allen@baumrealty.com  
**DOUG RENNER**      312.275.3137      doug.renner@baumrealty.com  
**MARK FREDERICKS**      312.275.3109      mark@baumrealty.com



# 61 E. VAN BUREN

## SITE PLAN



### E. Van Buren

For more information contact:

- ALLEN JOFFE** 312.275.3120 allen@baumrealty.com
- DOUG RENNER** 312.275.3137 doug.renner@baumrealty.com
- MARK FREDERICKS** 312.275.3109 mark@baumrealty.com





For more information contact:

|                 |              |                            |
|-----------------|--------------|----------------------------|
| ALLEN JOFFE     | 312.275.3120 | allen@baumrealty.com       |
| DOUG RENNER     | 312.275.3137 | doug.renner@baumrealty.com |
| MARK FREDERICKS | 312.275.3109 | mark@baumrealty.com        |



©2018 All information supplied is from sources deemed reliable and is furnished subject to errors, omissions, modifications, removal of the listing from sale or lease, and to any listing conditions, including the rates and manner of payment of commissions for particular offerings, the terms of which are available to principals or duly licensed brokers. This information may include estimates and projections with respect to future events, and these future events may or may not actually occur. Such estimates and projections reflect various assumptions concerning anticipated results. While we believe these assumptions are reasonable, there can be no assurance that any of these estimates and projections will prove to have been correct. Therefore, actual results may vary materially from these forward-thinking estimates and projections. Any square footage dimensions set forth are approximate.