



FOR LEASE

5 WOOD HOLLOW ROAD

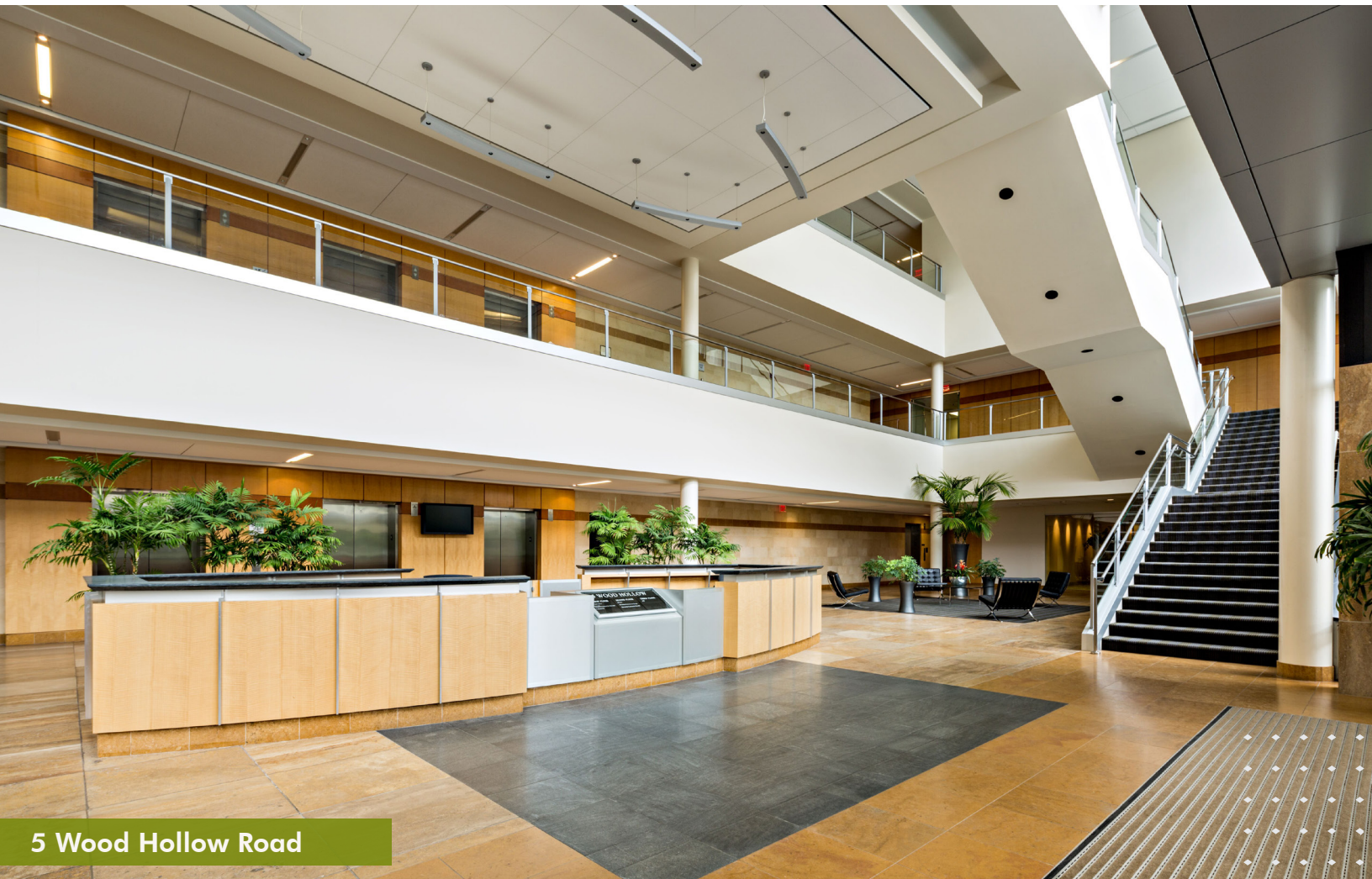
PARSIPPANY, NJ



CBRE

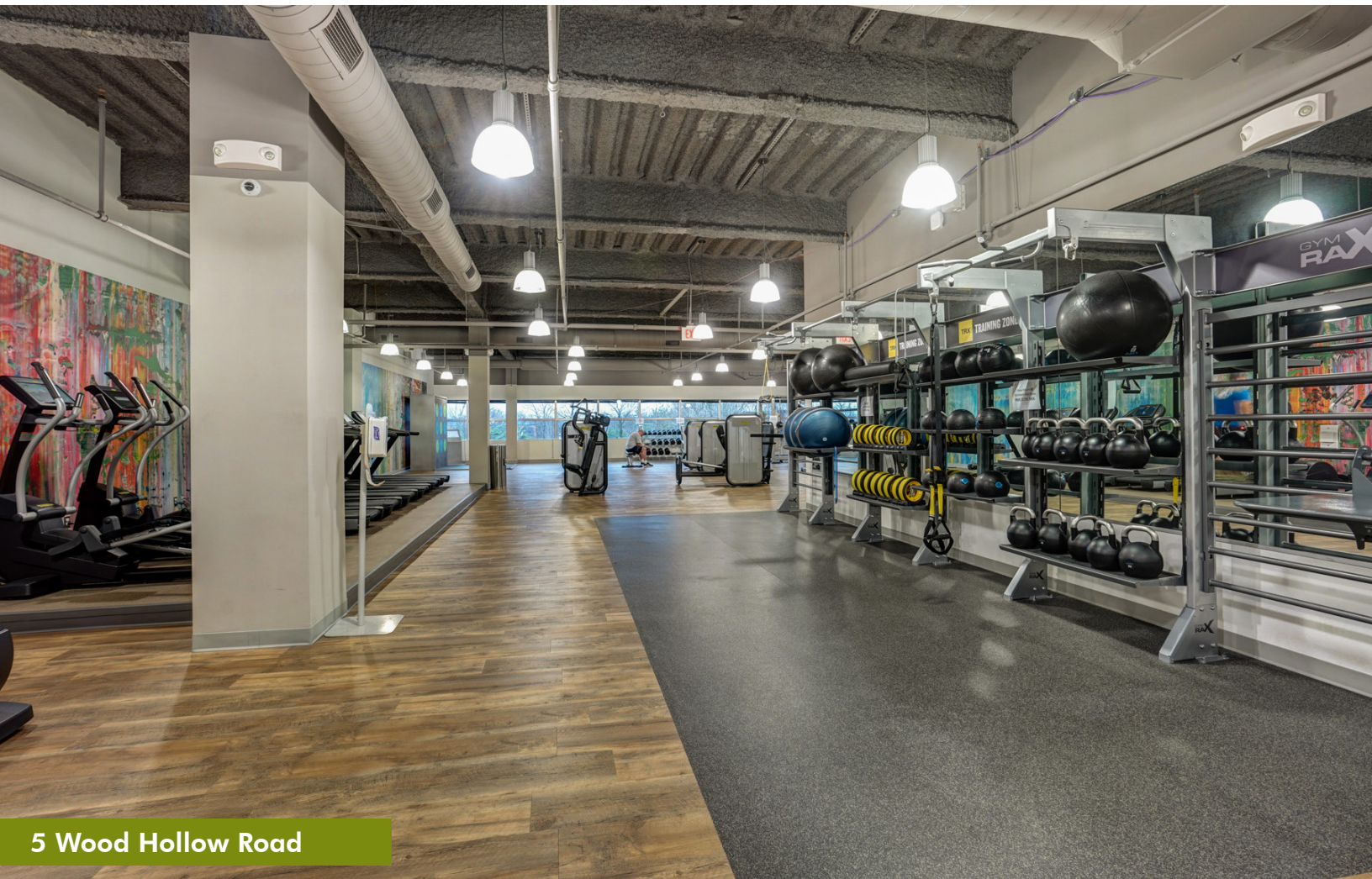
PROPERTY FEATURES

- Building size: 330,631 RSF on three (3) floors
- 23 acre site
- Dramatic three-story atrium lobby with 2nd and 3rd floor balcony lobbies
- Park-like campus setting
- 1,240 surface parking spaces
- 14'6" slab-to-slab ceiling heights
- 30' x 35' column spacing
- 2 bay-covered loading docks
- Zoning: SED5 (Specialized Economic Development District)



ON-SITE PROPERTY AMENITIES

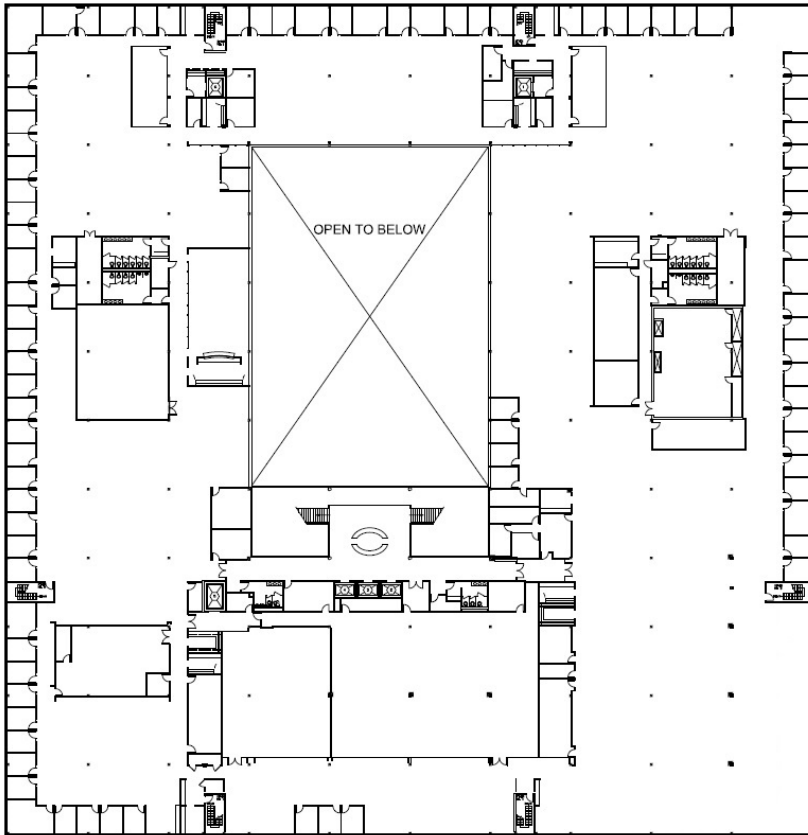
- Full-service cafeteria
- Conferencing/training center
- **New** Fitness center including state-of-the-art equipment, yoga room, spinning room, and men's/women's locker rooms with showers
- On-site property management
- LEED certified
- Monument signage



AVAILABILITIES

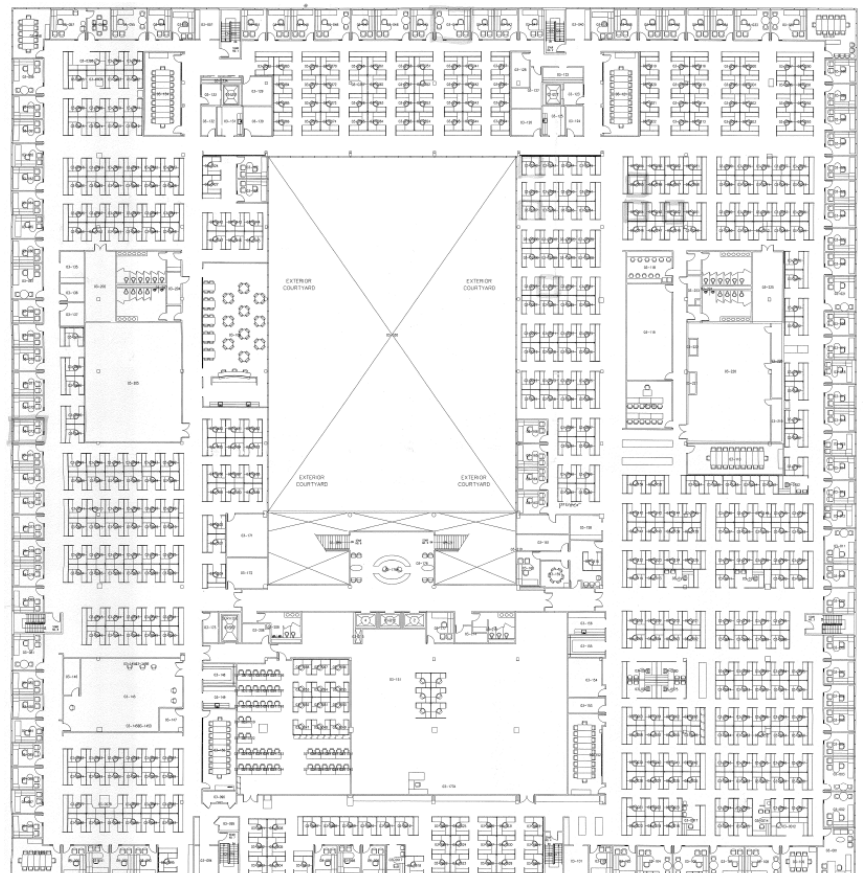
22,453 RSF - 2nd Floor

117,118 RSF - THE THIRD FLOOR



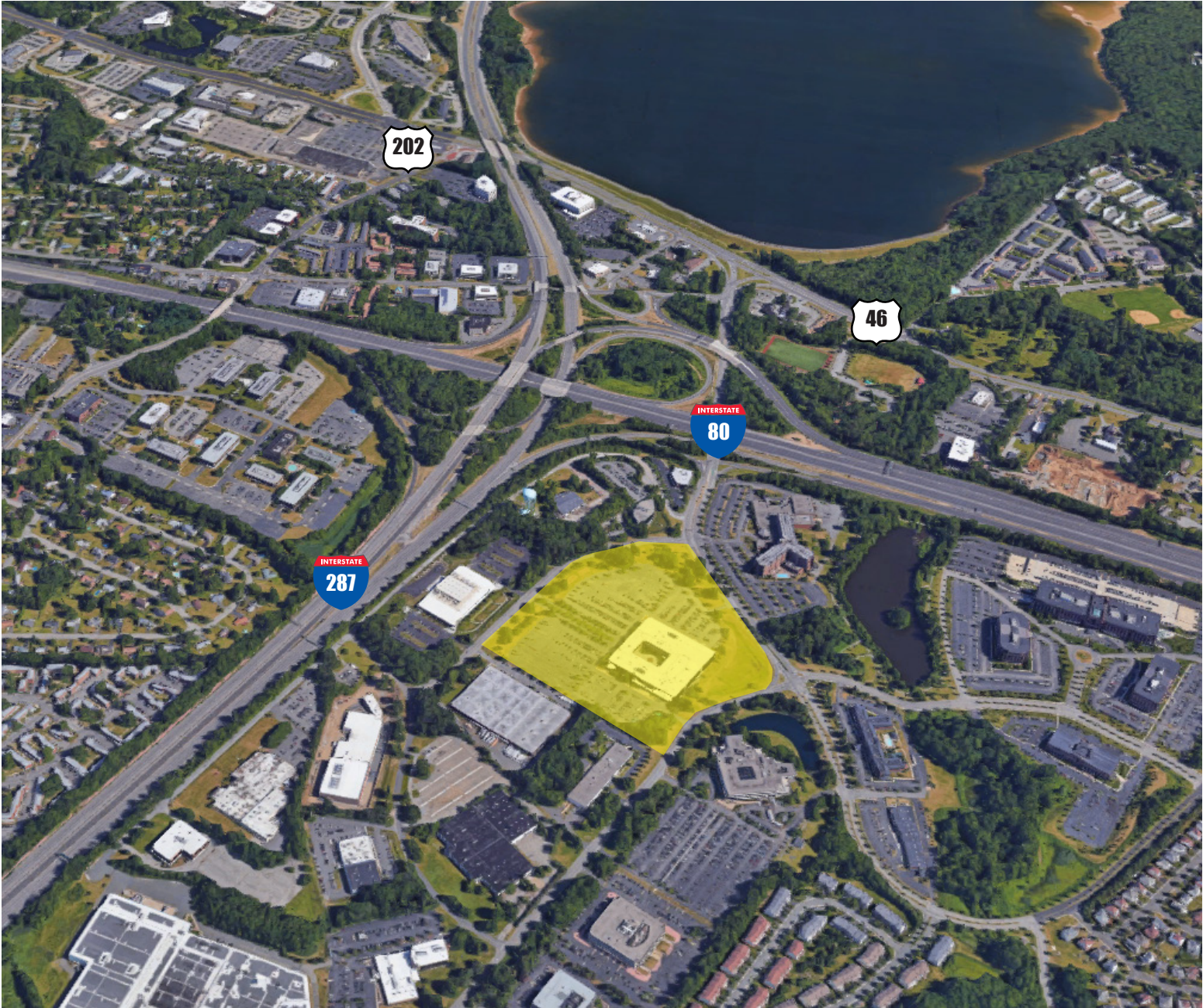
Dedicated backup generator (Cummins 1375 kW Diesel Powered) serving **THE THIRD FLOOR**.

THE THIRD FLOOR is fully furnished for more than 600 employees.





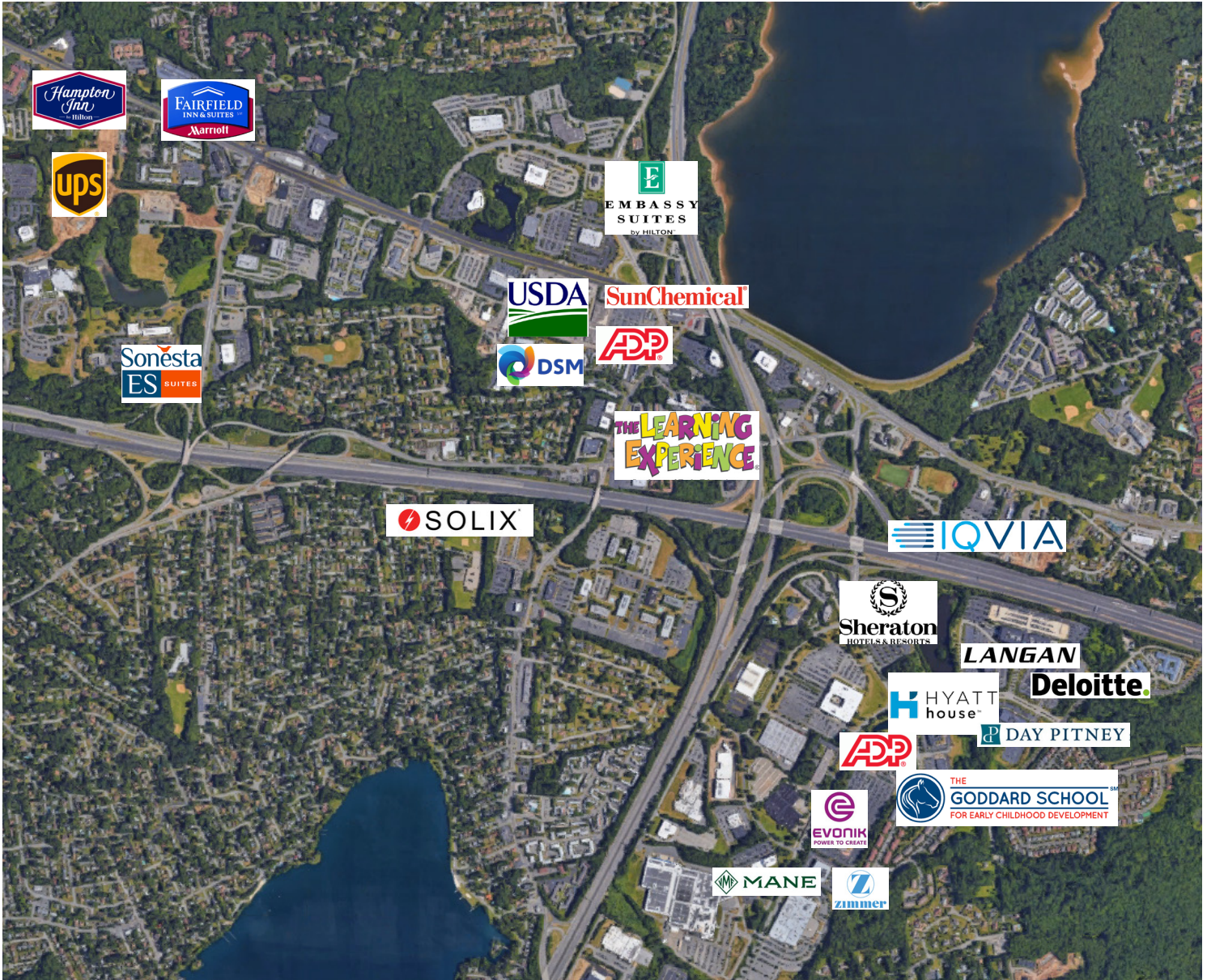
PROPERTY LOCATION



Exceptional access to I-80, I-287, Route 46, and Route 202



AREA AMENITIES & TENANTS





FOR LEASE

KINGSBRIDGE
CORPORATE CAMPUS

5 WOOD HOLLOW ROAD • PARSIPPANY, NJ

CONTACT US

JON MEISEL

Senior Vice President
+1 732 509 2843
jonathan.meisel@cbre.com

DAN CASEY

First Vice President
+1 201 712 5808
daniel.casey@cbre.com

PETER SHIKAR

First Vice President
+1 732 509 8915
peter.shikar@cbre.com

CBRE