

FOR SALE

SARTELL MEDICAL ARTS LAND

150 19TH ST S
SARTELL, MN 56377



Ryan Hardin, Broker
612.356.2002
ryanhardin@hardincompanies.com
hardincompanies.com



CONFIDENTIALITY/DISCLAIMER

Partners Real Estate MN Hardin Companies has obtained the information contained herein from sources believed to be reliable, but not guaranteed. Partners Real Estate MN Hardin Companies makes no representations or warranties, express or implied, are made as to the accuracy or reliability of this information. Any references to square footage or age are approximate only. The recipient bears sole responsibility for verification of the accuracy of the information contained herein and bears all risk for any inaccuracies. Partners Real Estate MN Hardin Companies shall have no liability or responsibility to any party for any loss or damage arising from reliance by any party on the information contained herein. Information subject to change. Partners Real Estate MN Hardin Companies is a licensed real estate brokerage in the State of Minnesota. If you need any professional services including but not limited to: legal, tax, survey, environmental, zoning, title or other advice, please consult the appropriate professional.



Ryan Hardin, Broker
612.356.2002
ryanhardin@hardincompanies.com
hardincompanies.com

EXECUTIVE SUMMARY

PROPERTY OVERVIEW

Great opportunity to develop 56,192 sq ft lot (1.29 acres) in the heart of Sartell's Medical Arts Campus. Comprehensive Design Zoning allows for a variety of uses. Gorgeous setting overlooking pond perfect location for office/medical with easy access and retail nearby.

PROPERTY HIGHLIGHTS

- Medical Arts Campus
- Comprehensive Design Zoning
- 1.29 Acres
- Sewer and water available
- Excellent Location



Sale Price:	\$309,058
PID Number:	92.57044.0904
Lot Size:	1.29 Acres
2018 Tax:	\$11,036
Zoning:	CDZ



Ryan Hardin, Broker
612.356.2002
ryanhardin@hardincompanies.com
hardincompanies.com



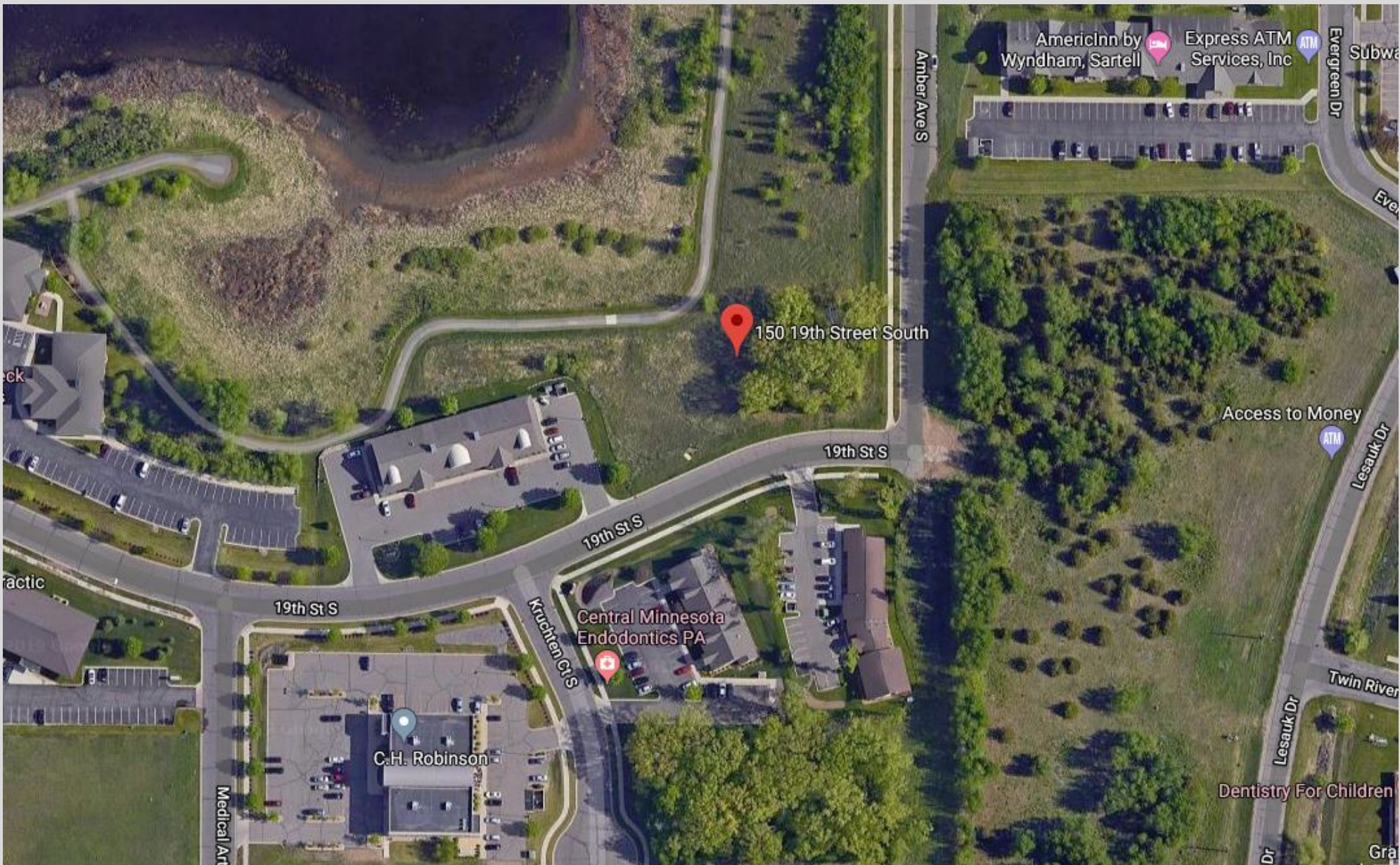
Ryan Hardin, Broker
612.356.2002
ryanhardin@hardincompanies.com
hardincompanies.com



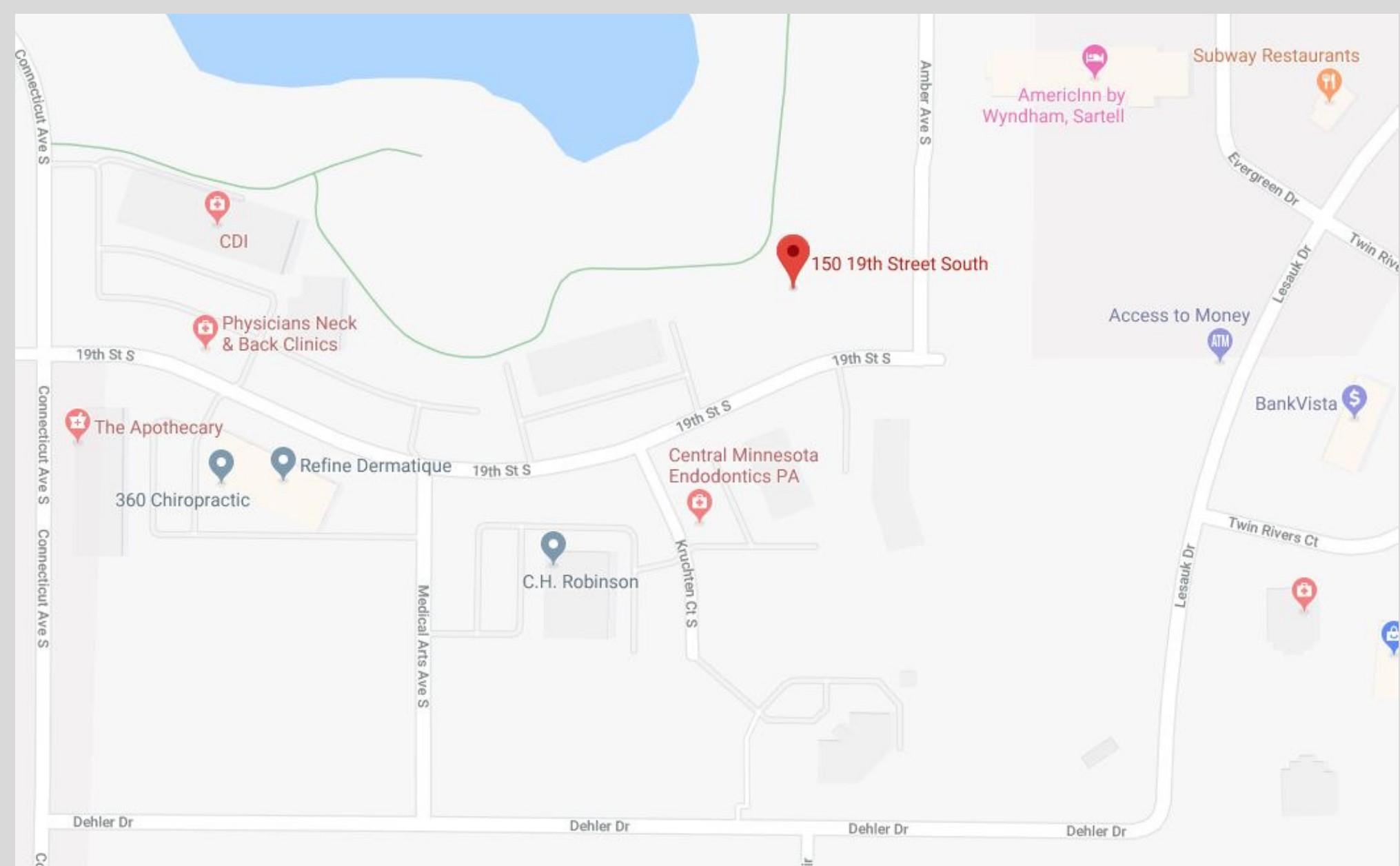
Ryan Hardin, Broker
612.356.2002
ryanhardin@hardincompanies.com
hardincompanies.com



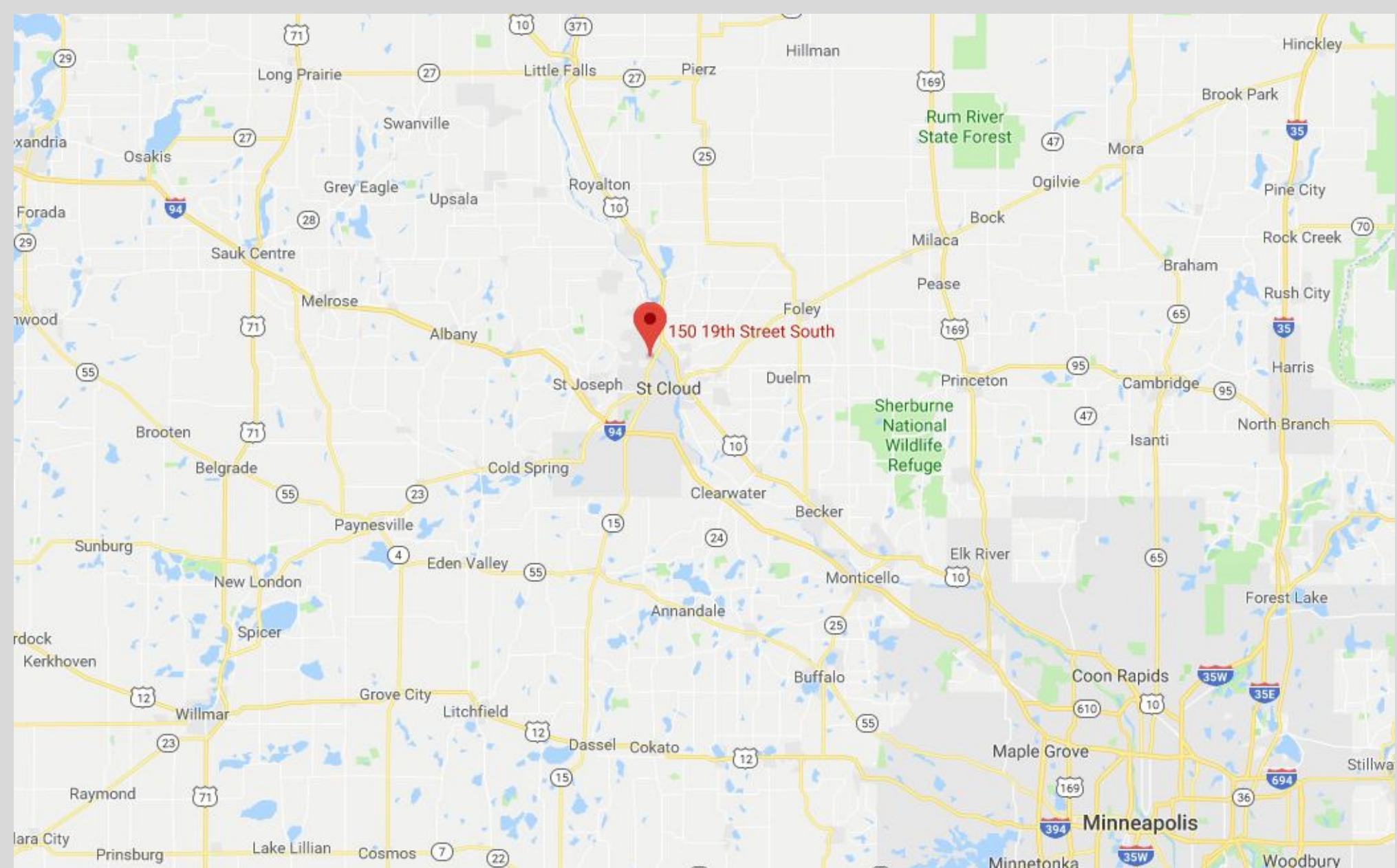
Ryan Hardin, Broker
612.356.2002
ryanhardin@hardincompanies.com
hardincompanies.com



Ryan Hardin, Broker
612.356.2002
ryanhardin@hardincompanies.com
hardincompanies.com



Ryan Hardin, Broker
612.356.2002
ryanhardin@hardincompanies.com
hardincompanies.com



Ryan Hardin, Broker
612.356.2002
ryanhardin@hardincompanies.com
hardincompanies.com



Ryan Hardin, Broker
612.356.2002
ryanhardin@hardincompanies.com
hardincompanies.com