

1144 RIG STREET
COMMERCE TWP., MICHIGAN



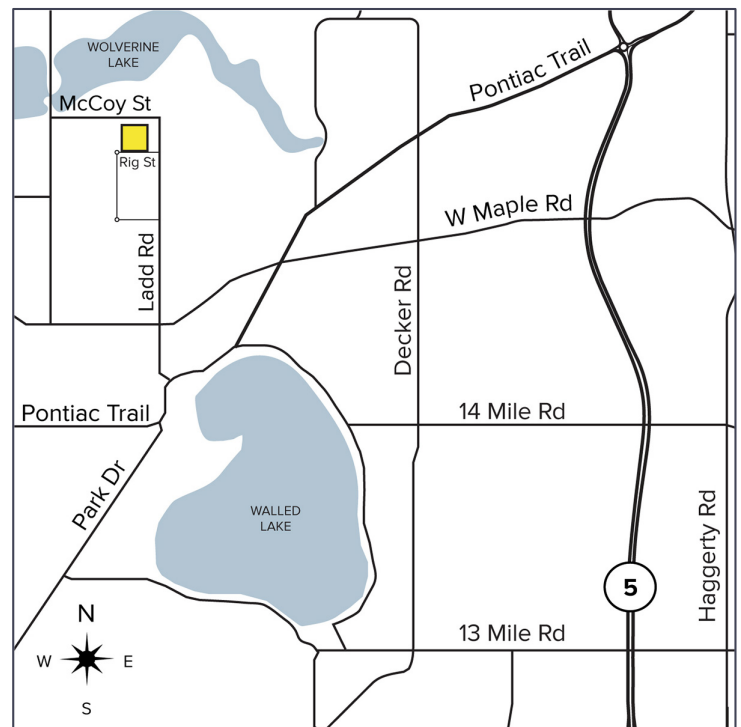
**SIGNATURE
ASSOCIATES**
KNOW SIGNATURE | KNOW RESULTS

INDUSTRIAL FOR SALE OR LEASE
9,000 Square Feet Available



PROPERTY FEATURES

- 9,000 square feet available
- 2,235 square feet of office
- 18' clear height
- (3) 12x14 grade level doors
- Zoned Heavy Industrial
- Heavy Power
- 1.27 Acres
- Outside storage allowed
- Lease Rate: \$6.25/sq.ft. NNN
- Sale Price: \$700,000 (\$77.78/sq.ft.)



For more information, please contact:

JIM MONTGOMERY
(248) 359 0614

jmontgomery@signatureassociates.com

CHRISTOPHER CALVANO
(248) 359 0610

ccalvano@signatureassociates.com

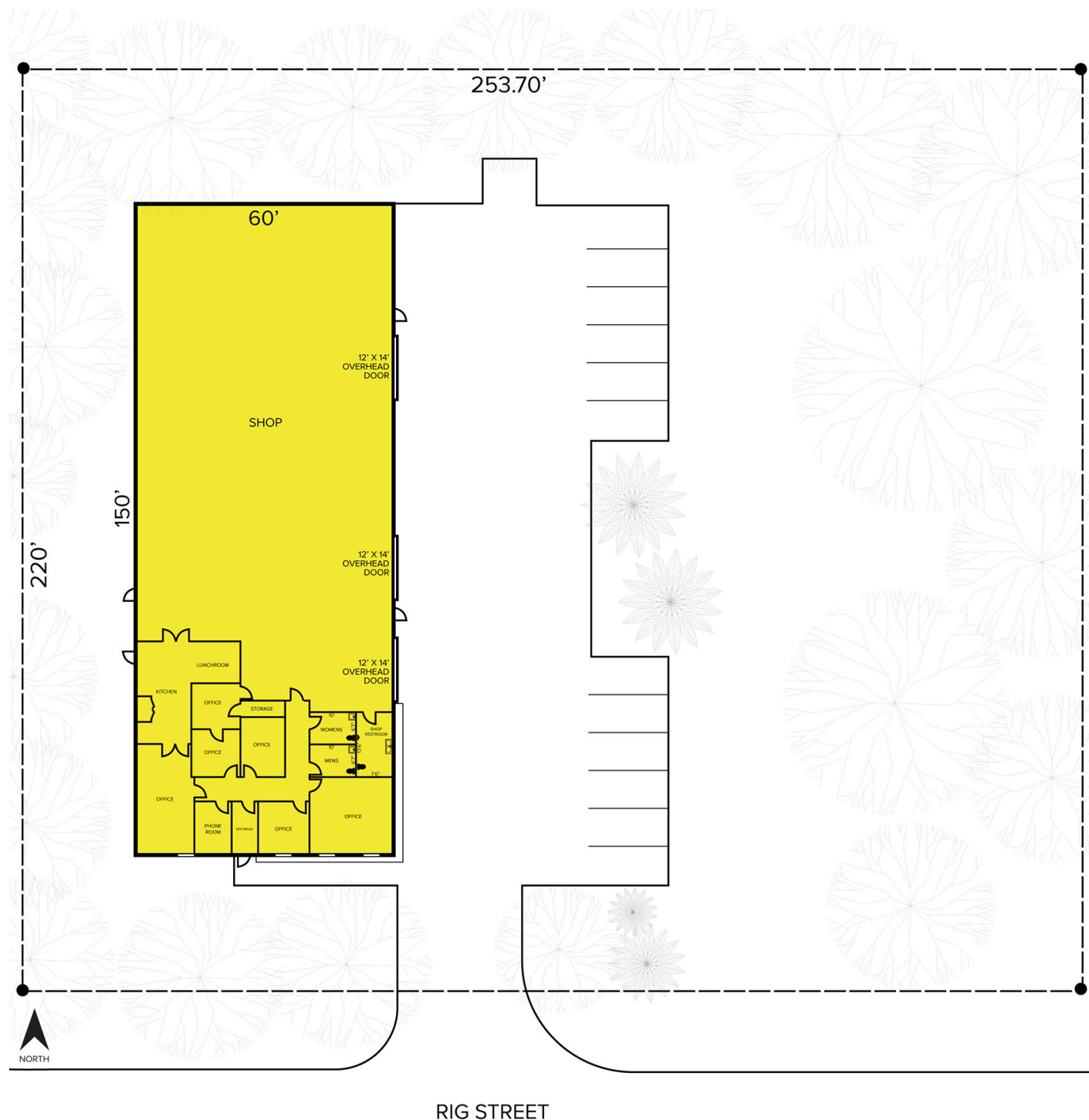
SIGNATURE ASSOCIATES
One Towne Square, Suite 1200
Southfield, MI 48076
www.signatureassociates.com

1144 Rig Street – Commerce Twp., Michigan

Industrial For Sale or Lease

9,000
Square Feet
AVAILABLE

Site Plan



For more information, please contact:

JIM MONTGOMERY

(248) 359 0614

jmontgomery@signatureassociates.com

CHRISTOPHER CALVANO

(248) 359 0610

ccalvano@signatureassociates.com

SIGNATURE ASSOCIATES

One Towne Square, Suite 1200

Southfield, MI 48076

www.signatureassociates.com

1144 Rig Street – Commerce Twp., Michigan

Industrial For Sale or Lease

9,000
Square Feet
AVAILABLE

Aerial



For more information, please contact:

JIM MONTGOMERY

(248) 359 0614

jmontgomery@signatureassociates.com

CHRISTOPHER CALVANO

(248) 359 0610

ccalvano@signatureassociates.com

SIGNATURE ASSOCIATES

One Towne Square, Suite 1200

Southfield, MI 48076

www.signatureassociates.com

Information is subject to verification and no liability for errors or omissions is assumed. Price is subject to change and listing withdrawal.