

## Alderwood Corporate Center

### Building D

8812 NE Alderwood Road  
Portland, Oregon



### Features

Alderwood Corporate Center is an 834,700 square foot master-planned business park strategically located within close proximity to Portland International Airport (PDX) and two major interstate freeway interchanges.

This location, on the west side of I-205, provides easy freeway access and is walking distance to Cascade Station retail center which provides many amenities including support services, restaurants and mass transit for Alderwood customers.

±46,875 SF shell

±5,400 SF office

Ten (10) dock doors including 4 dock levelers

Two (2) 12' x 14' grade level doors

±30' minimum clear height

ESFR high density sprinkler system

Rates: Call for quote

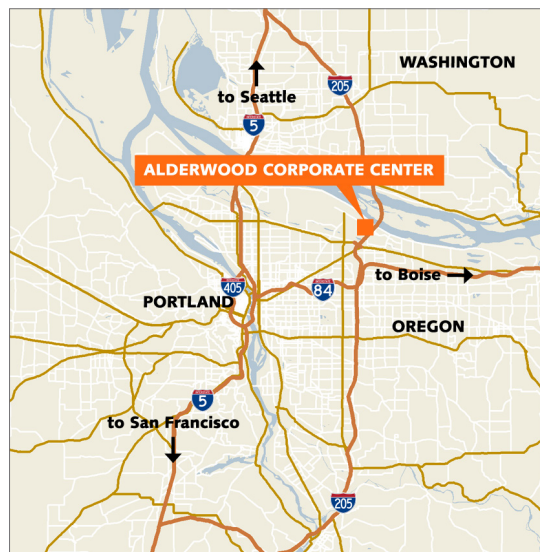
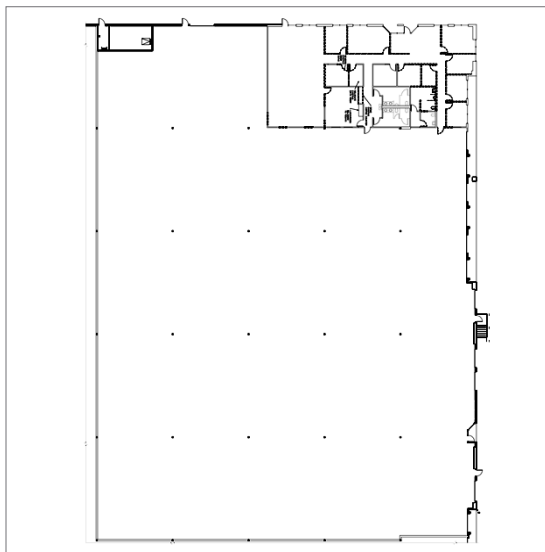
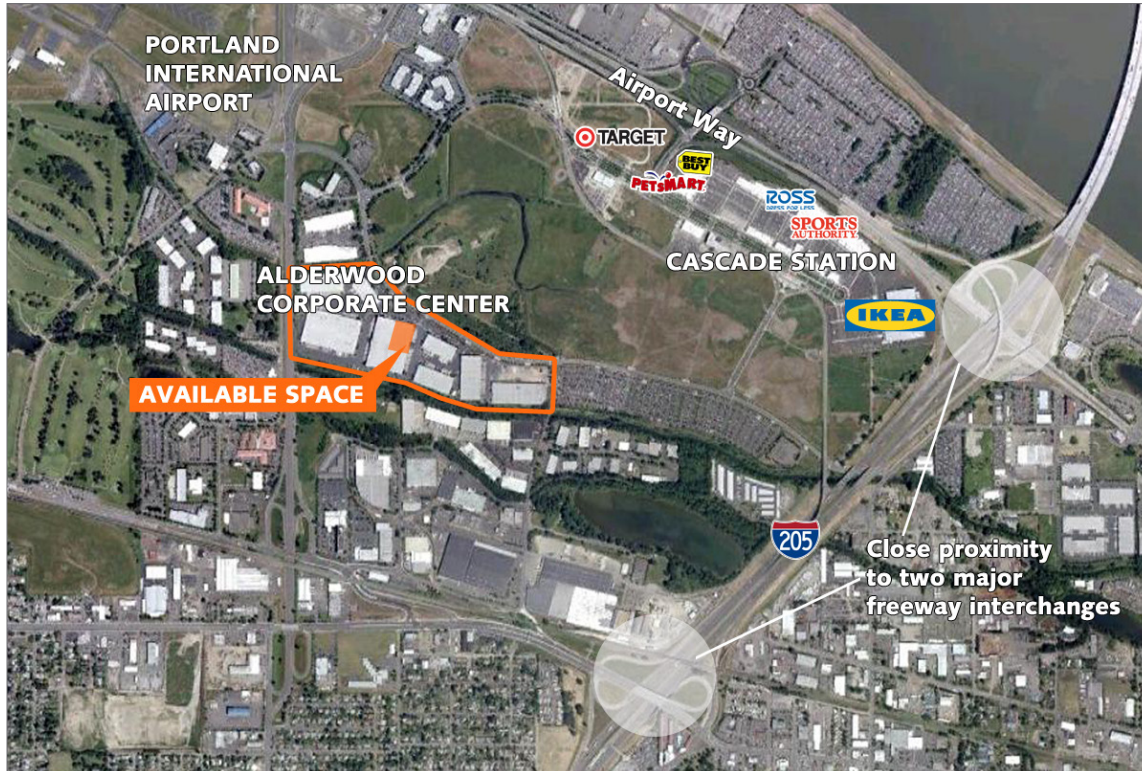
### Contact

**Steven Klein**  
503.221.2260  
sklein@kiddermathews.com

**Peter Stalick**  
503.221.2272  
pstalick@kiddermathews.com

**Brendan Murphy**  
503.721.2705  
bmurphy@kiddermathews.com

## Alderwood Corporate Center



### Contact

**Steven Klein**  
503.221.2260  
sklein@kiddermathews.com

**Peter Stalick**  
503.221.2272  
pstalick@kiddermathews.com

**Brendan Murphy**  
503.721.2705  
bmurphy@kiddermathews.com