



4328 LINDENWOOD DR. | MATTESON, IL



4316 LINDENWOOD DR. | MATTESON, IL

±22,000 SF - 24 APARTMENT UNITS

FOR SALE

4328/4316 LINDENWOOD | MATTESON, IL

CONTACT INFORMATION:

ALEX GENOVA, CPA

847-588-5648

alex.genova@transwestern.com



±22,000 SF - 24 APARTMENT UNITS

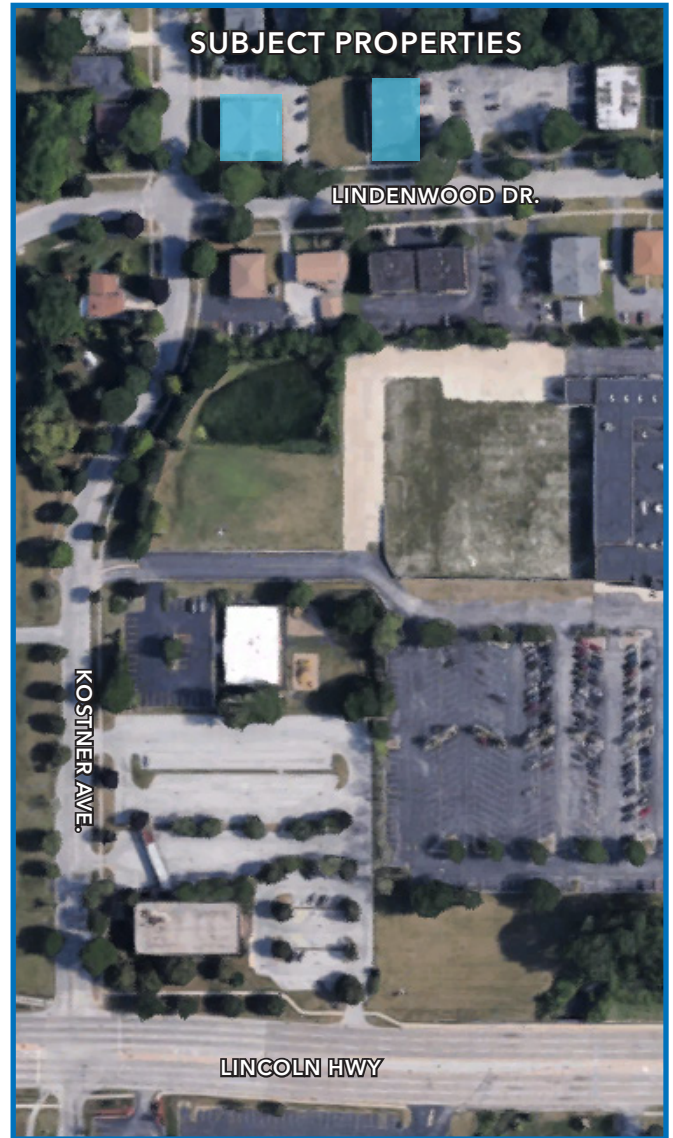
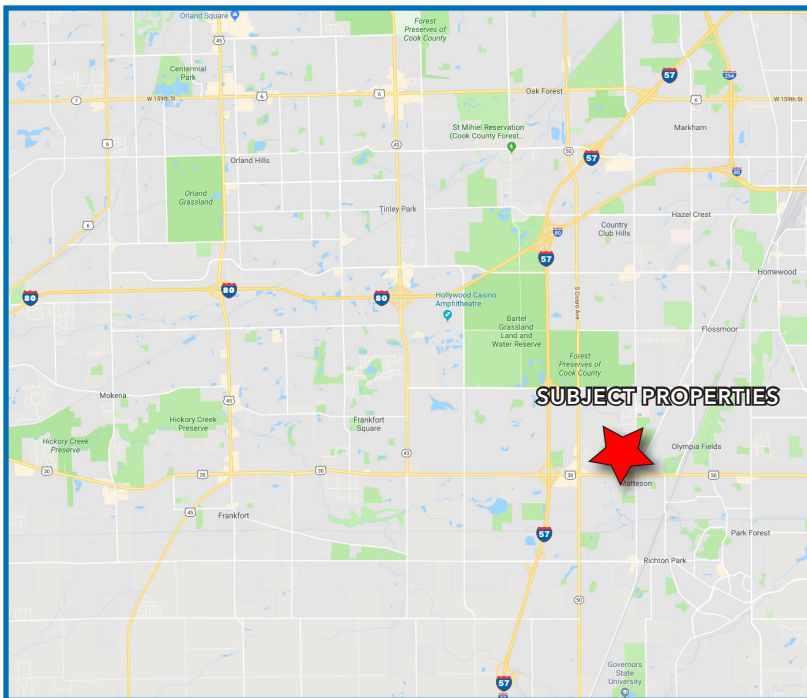
FOR SALE

4328/4316 LINDENWOOD | MATTESON, IL



SPECIFICATIONS

- Building Size: 2 (two) ±11,000 SF Buildings
- ±22,000 SF Total
- Units: 24 Apartments Total
- Land Area: ±1.0 AC
- Year Built: 1968 (Remodels since)
- Asking Price: \$1,800,000 / \$75,000 per unit
- Additional Information Available with Signed Confidentiality Agreement



HIGHLIGHTS

- High Occupancy
- Stable Tenancy
- Great Location Near Rt. 30, I-57 and I-80
- Well Maintained
- Dedicated Parking Lots
- Bonus Extra Land Site
- By Appointment Only - Please do not disturb tenants

CONTACT INFORMATION

ALEX GENOVA, CPA

847-588-5648

alex.genova@transwestern.com