

LAND FOR SALE

+/-5.12 ACRES

3500 HWY 1187 | CROWLEY, TEXAS 76036

CONTACT

LESTER DAY

817.877.4433

lester.day@transwestern.com

LAND FOR SALE

+/-5.12 ACRES

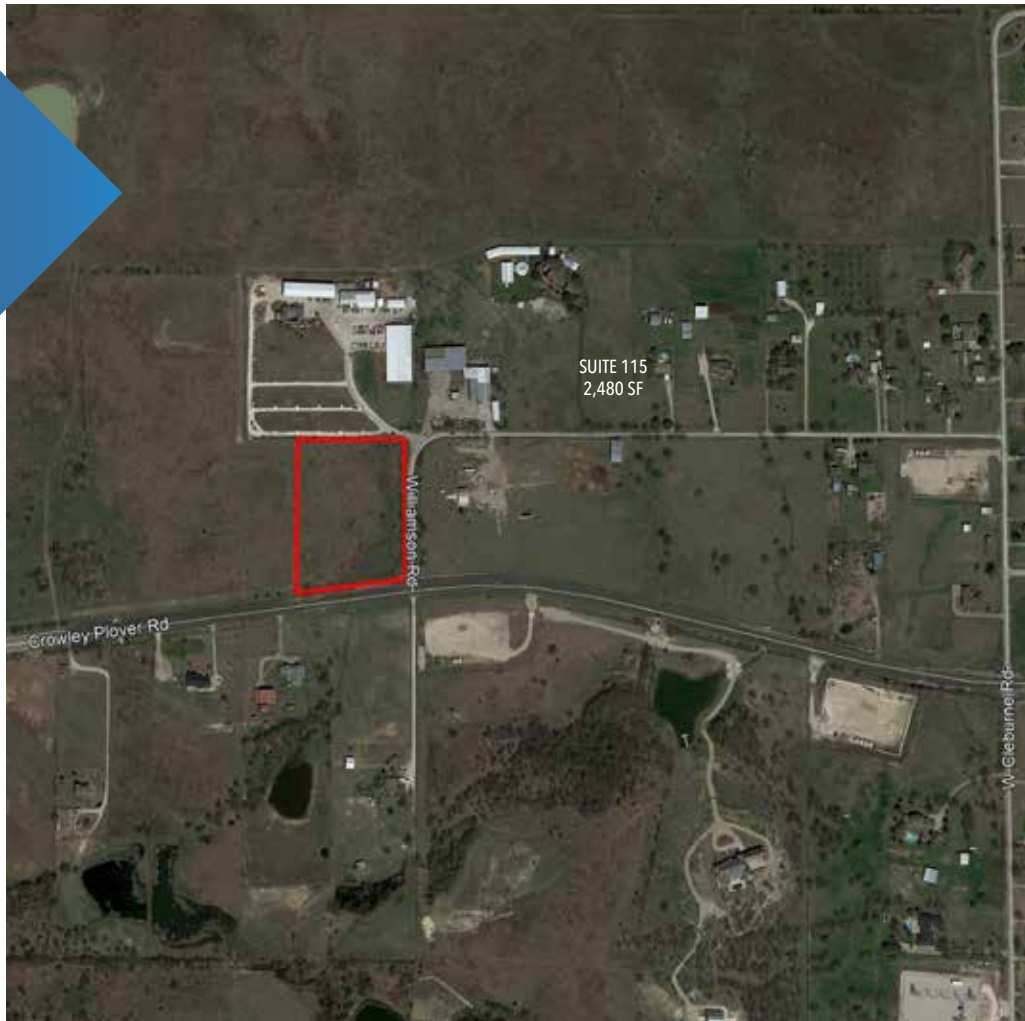
3500 HWY 1187 | CROWLEY, TEXAS 76036

CONTACT

LESTER DAY

817.877.4433

lester.day@transwestern.com



PROPERTY INFORMATION

- +/- 5.12 Acres
- Just minutes from Chisholm Trail Parkway between Old Granbury Rd and W Cleburne Rd
- Crowley I.S.D.
- Tarrant County
- Zoning: Fort Worth ETJ
- Utilities: Electric

SALES PRICE

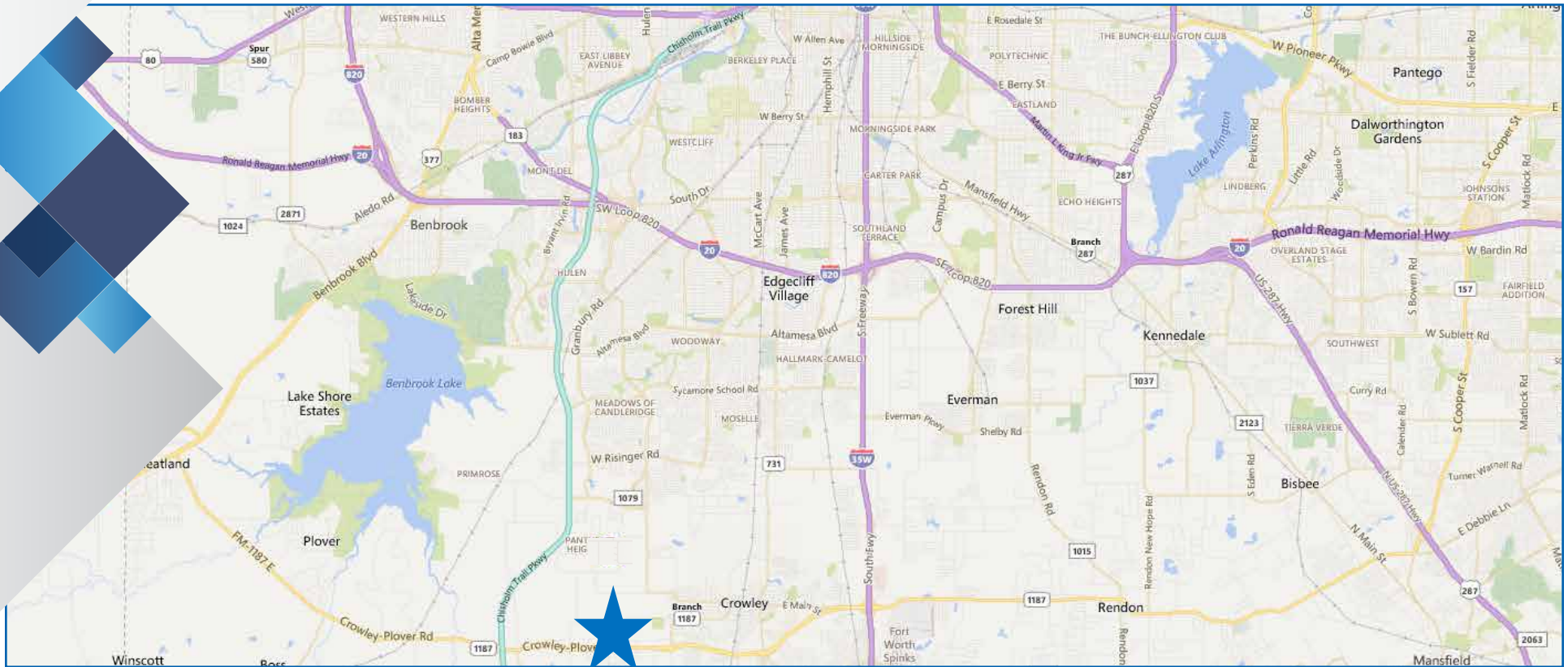
- \$595,000.00



LAND FOR SALE

+/-5.12 ACRES

3500 HWY 1187 | CROWLEY, TEXAS 76036



DEMOGRAPHICS	5 MILE	10 MILE
Population	65,059	305,188
Households	21,774	112,043
Average HH Income	\$106,071	\$95,148

TRAFFIC COUNTS	
1187 @ Old Granbury Rd.	17,300 V.P.D.
Old Granbury Rd. @ 1187	11,210 V.P.D.

The information provided herein was obtained from sources believed reliable; however, Transwestern makes no guarantees, warranties or representations as to the completeness or accuracy thereof. The presentation of this property is submitted subject to errors, omissions, change of price or conditions, prior sale or lease, or withdrawal without notice. Copyright © 2018 Transwestern.

**CONTACT
LESTER DAY**

817.877.4433

lester.day@transwestern.com

