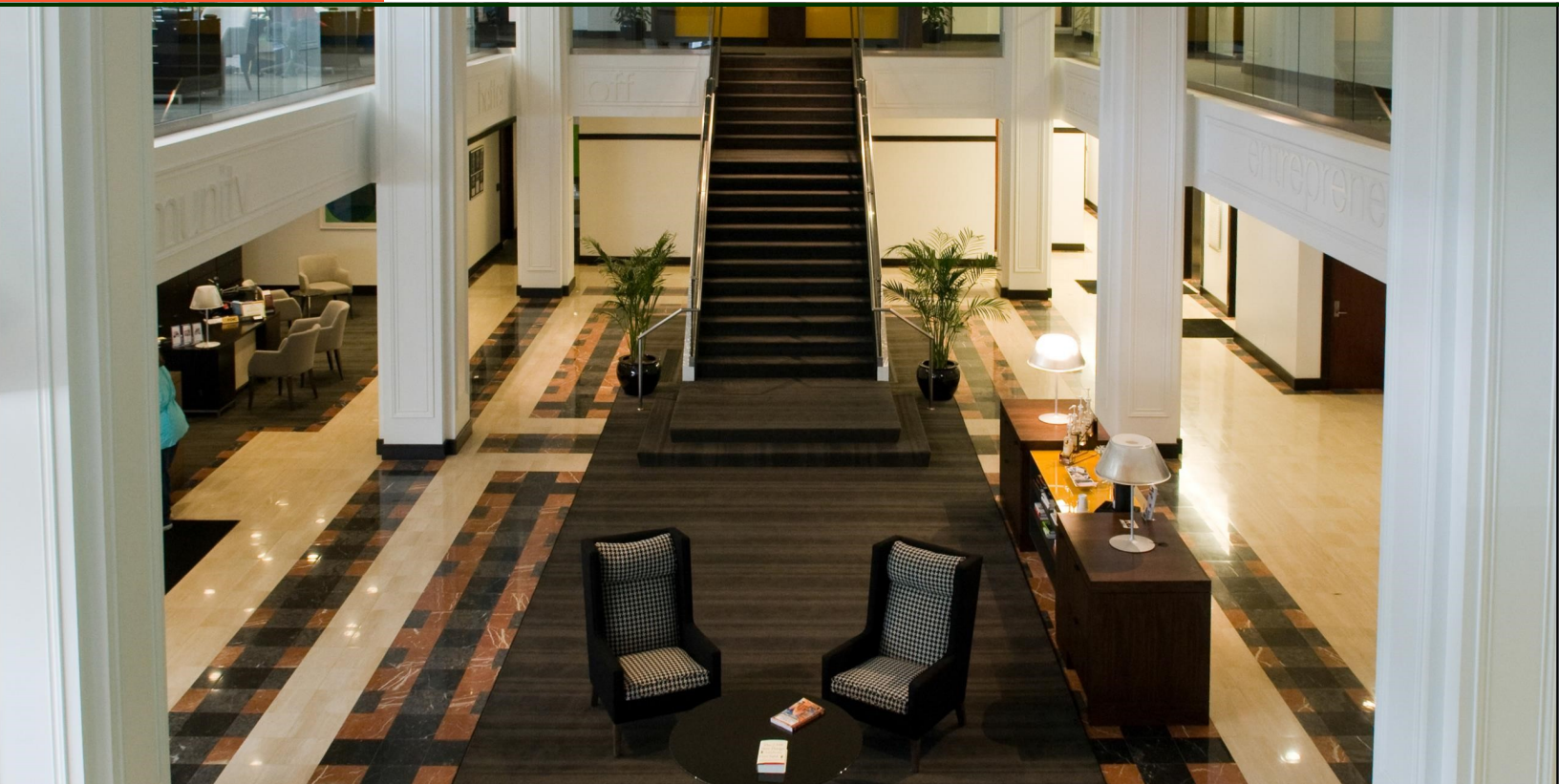


# Peck's Plaza

1044 Main Street

Kansas City, MO 64105



# W

W A T E R F O R D

PROPERTY COMPANY, LLC

# Peck's Plaza

Features | 1044 Main Street



- 6,555 to 13,110 square feet available.
- Located on the Street Car Line.
- High ceilings and great windows.
- \$16.50 per square foot full service.
- Located one block from the Power & Light District.
- Adjacent to Downtown Skywalk.
- Parking available.



WATERFORD  
PROPERTY COMPANY LLC

Chuck Connealy, SIOR, CCIM

Direct: (913) 789-9020

Cell: (913) 515-6616

[chuck.connealy@waterfordproperty.net](mailto:chuck.connealy@waterfordproperty.net)

# Peck's Plaza

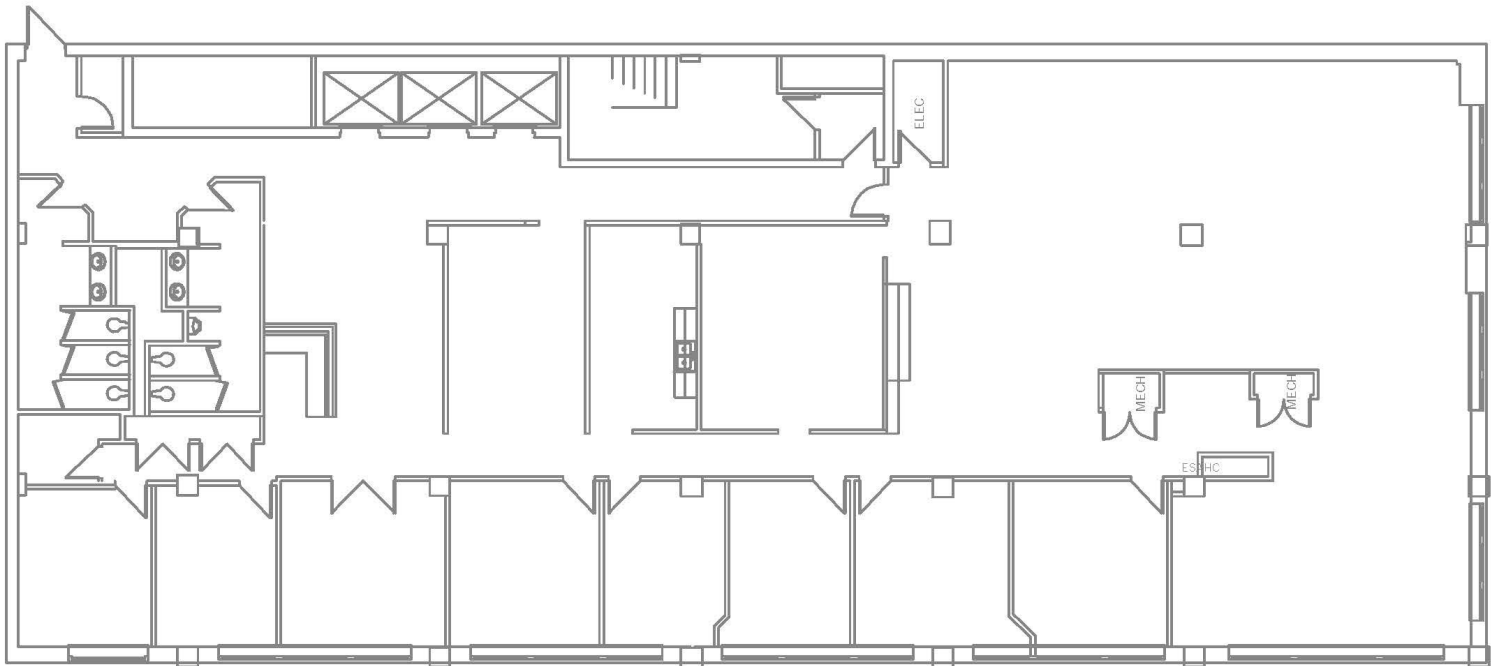
Available Space | 1044 Main Street



## Available Suites

<b>Building</b>	<b>Size</b>
7th Floor	6,555 RSF
8th Floor	6,555 RSF

## 7th Floor

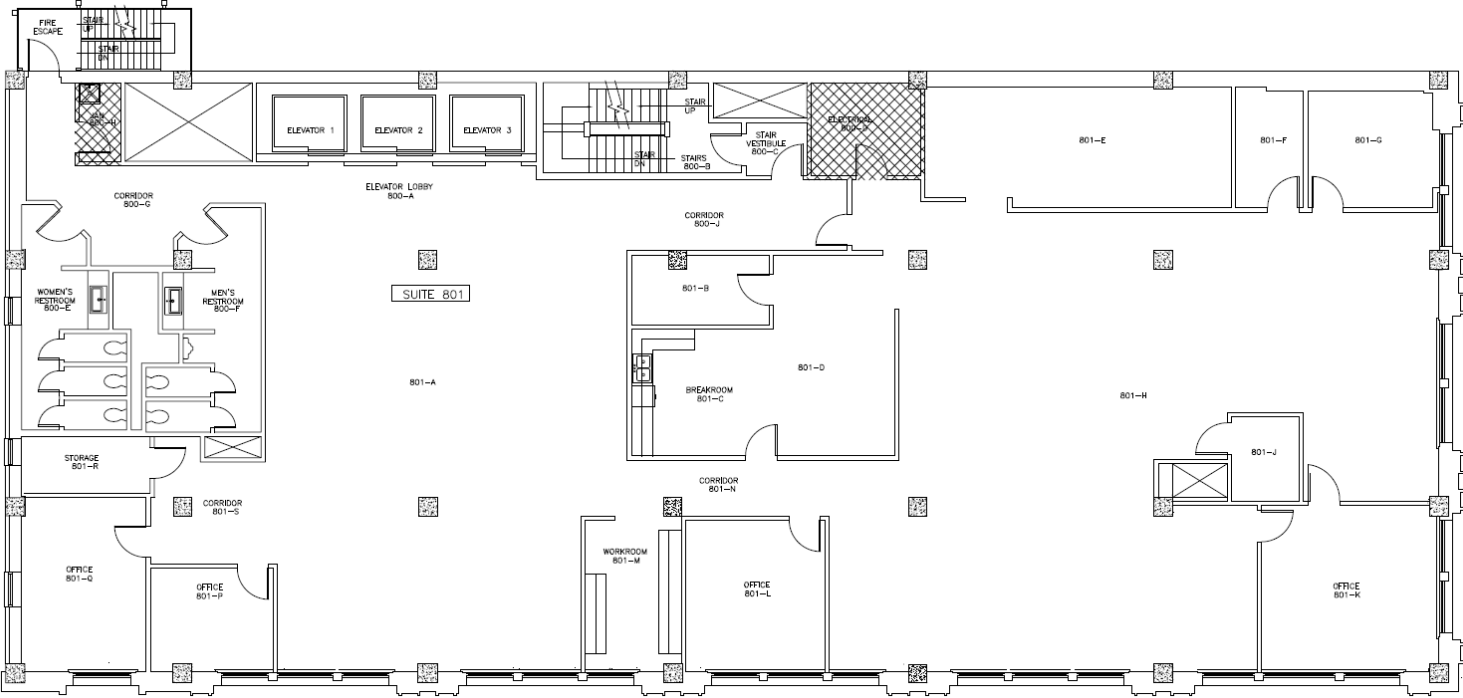


6,555 RSF

# Peck's Plaza

Available Space | 1044 Main Street

## 8th Floor





**WATERFORD**  
PROPERTY COMPANY LLC

**Chuck Connealy, SIOR, CCIM**

Direct: (913) 789-9020

Cell: (913) 515-6616

[chuck.connealy@waterfordproperty.net](mailto:chuck.connealy@waterfordproperty.net)

Information furnished regarding property is from sources deemed reliable but no warranty or representation is made as to the accuracy thereof and same is submitted subject to errors, omissions, prior sale or lease or withdrawal, without notice.