

1115 15TH STREET SACRAMENTO, CA

FOR LEASE

Property Highlights

- Stand Alone Two-Story Office Building Available for Lease in the Heart of Sacramento CBD
- Building located on East Side of 11th Street in between K & L Streets
- Building can be demised into Two Separate Users seeking $\pm 7,500$ SF
- Full Basement Available (elevator served)
- Interior Layout includes Meeting Space, Private Offices, Break Rooms, Production Area and Open Space
- Skylights on Second Floor
- Just steps to California State Capitol and numerous retail amenities including, Urban Outfitters, Macy's and MARRS Retail Scene.
- Located 4 blocks from New Golden One Arena and residential projects



PROFESSIONAL
BUILDING
1115 11th Street

±15,658 RSF (DIVISIBLE) AVAILABLE FOR LEASE

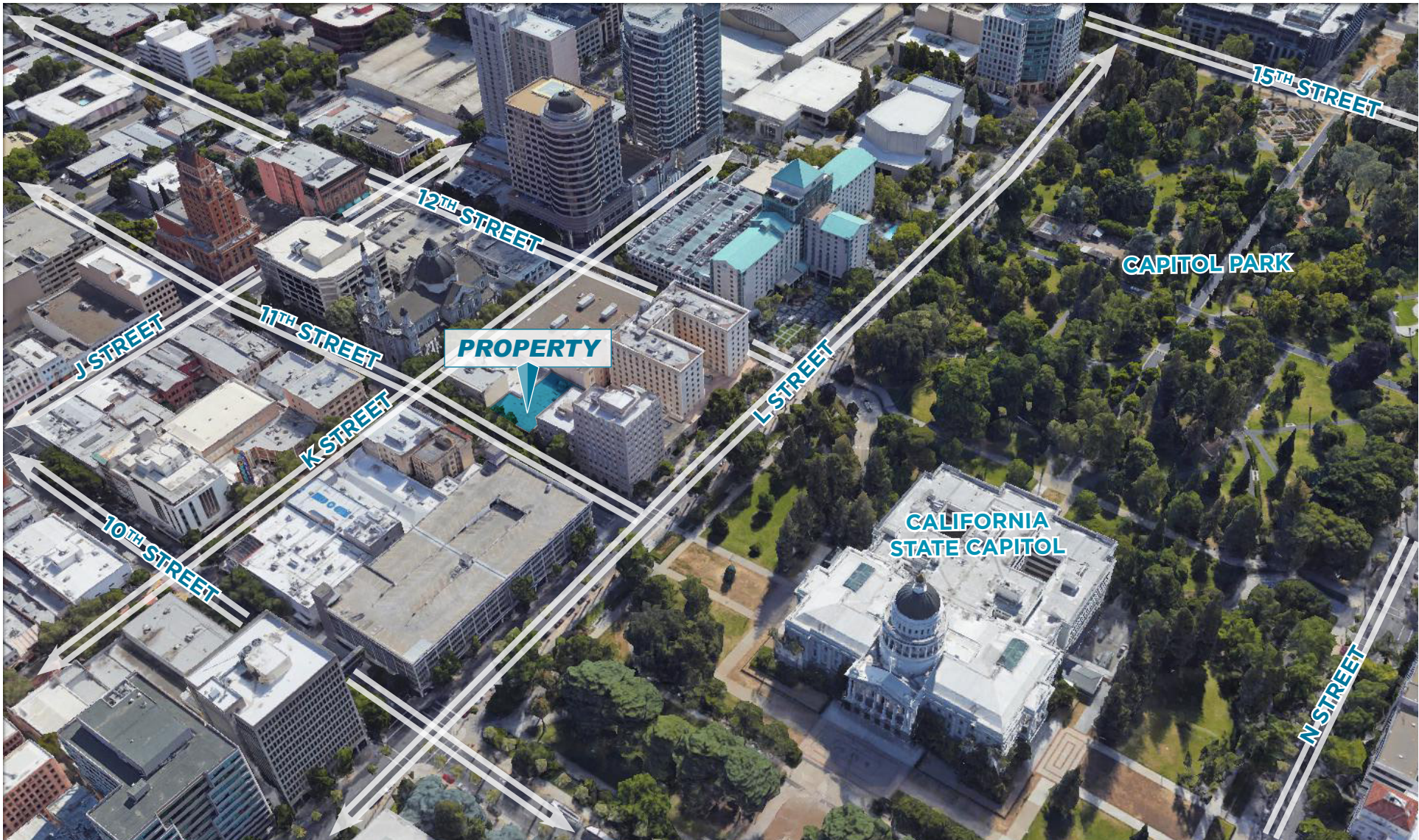
KRIS KALMBACH
Senior Director

KEVIN PARTINGTON
Executive Director

400 Capitol Mall, Suite 1800
Sacramento, CA 95814
CALIC #00616335

**CALL
+1 916 288 4800**

AERIAL

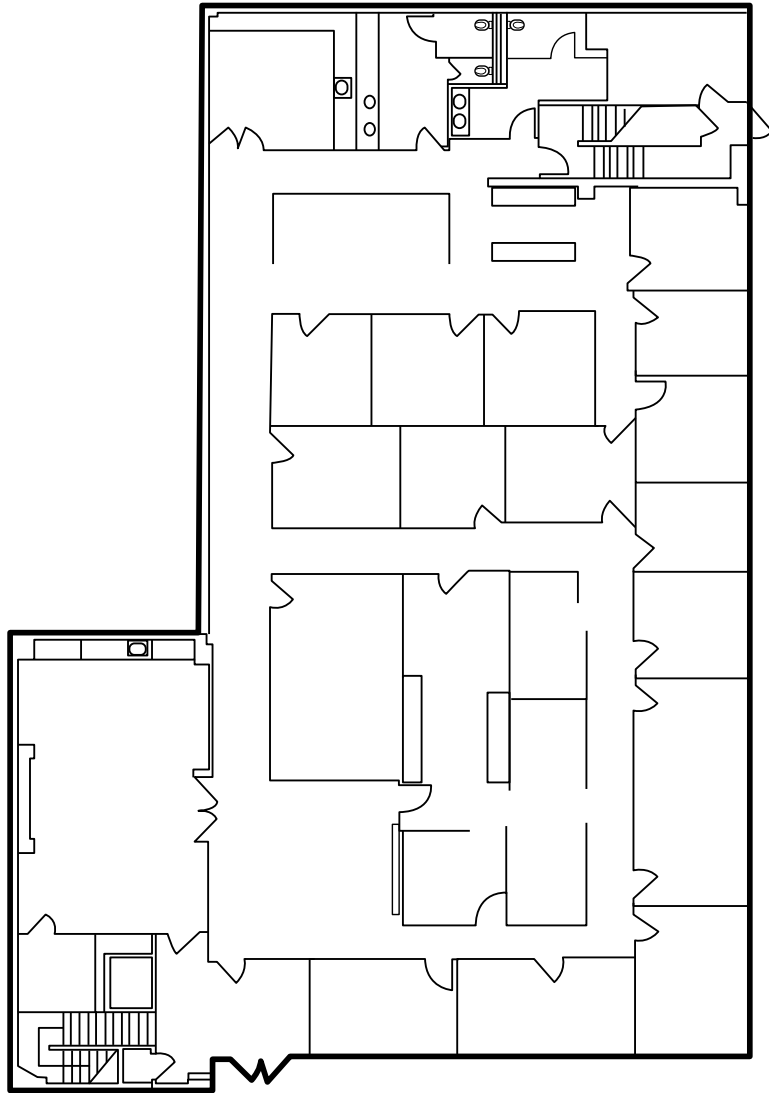


KRIS KALMBACH
Senior Director
+1 916 288 4421
kris.kalmbach@cushwake.com
LIC #01436668

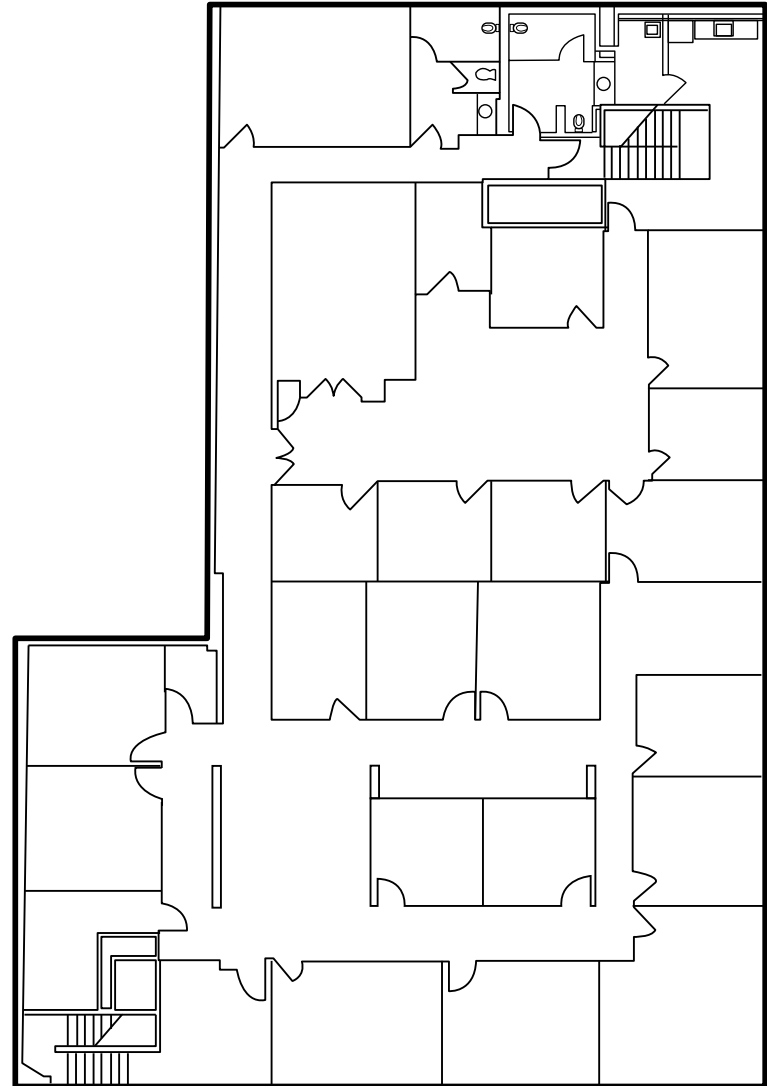
KEVIN PARTINGTON
Executive Director
+1 916 288 4807
kevin.partington@cushwake.com
LIC #01199010

400 Capitol Mall, Suite 1800
main +1 916 288 4800
cushmanwakefield.com

FLOOR PLAN | 1ST FLOOR - 7,829 SF



FLOOR PLAN | 2ND FLOOR - 7,829 SF



KRIS KALMBACH
Senior Director
+1 916 288 4421
kris.kalmbach@cushwake.com
LIC #01436668

KEVIN PARTINGTON
Executive Director
+1 916 288 4807
kevin.partington@cushwake.com
LIC #01199010

400 Capitol Mall, Suite 1800
main +1 916 288 4800
cushmanwakefield.com

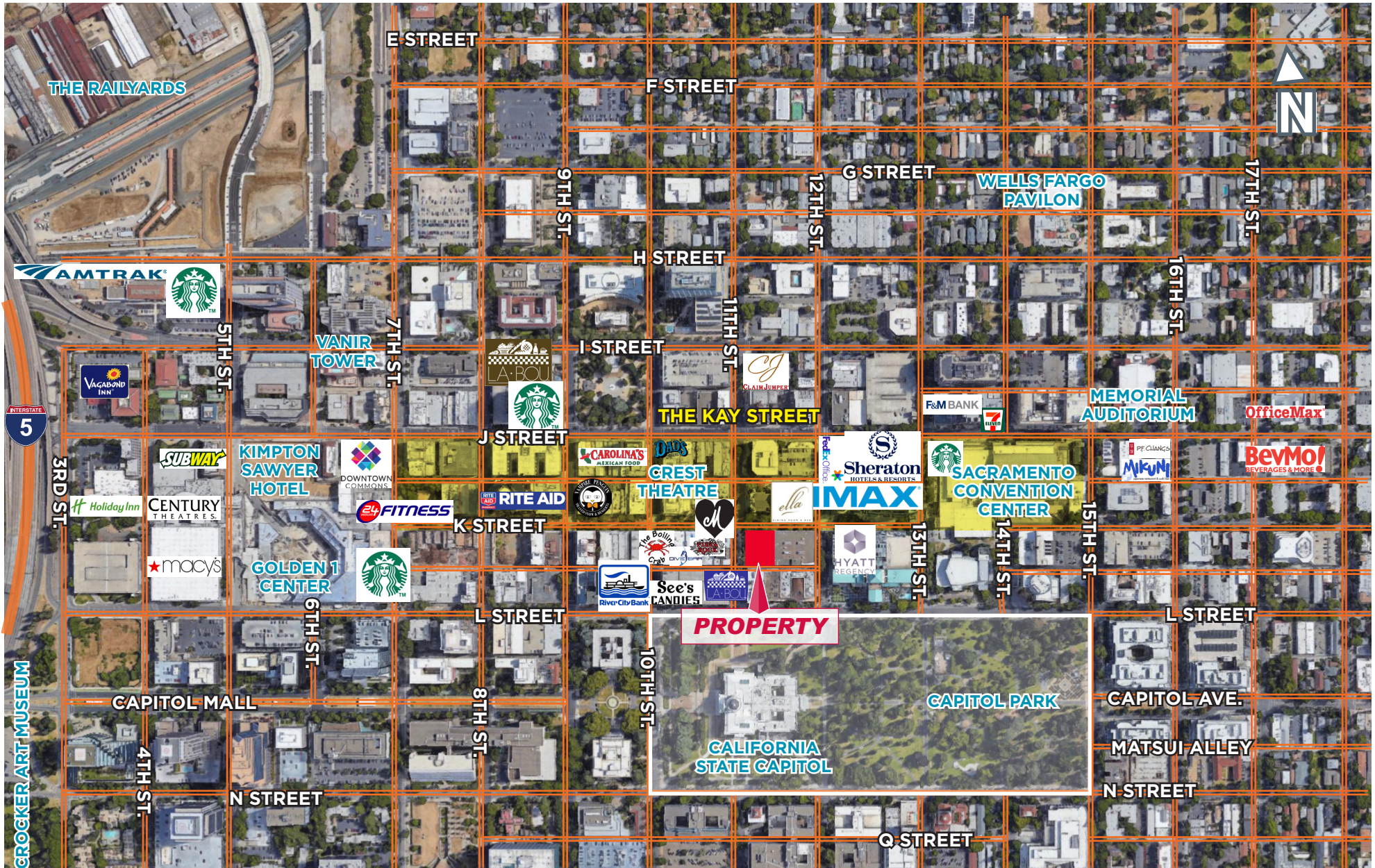
PROPERTY PHOTOS



KRIS KALMBACH
Senior Director
+1 916 288 4421
kris.kalmbach@cushwake.com
LIC #01436668

KEVIN PARTINGTON
Executive Director
+1 916 288 4807
kevin.partington@cushwake.com
LIC #01199010

400 Capitol Mall, Suite 1800
main +1 916 288 4800
cushmanwakefield.com



KRIS KALMBACH
 Senior Director
 +1 916 288 4421
 kris.kalmbach@cushwake.com
 LIC #01436668

KEVIN PARTINGTON
 Executive Director
 +1 916 288 4807
 kevin.partington@cushwake.com
 LIC #01199010

400 Capitol Mall, Suite 1800
 main +1 916 288 4800
cushmanwakefield.com



THE RAILYARDS



DOCO & KIMPTON HOTEL



GOLDEN 1 CENTER



PROPERTY VIEW OF STATE CAPITOL



1115 11TH STREET

WEST SACRAMENTO

THE RAILYARDS

DOWNTOWN SACRAMENTO

MIDTOWN SACRAMENTO

EAST SACRAMENTO

LAND PARK

CURTIS PARK



KRIS KALMBACH
Senior Director
+1 916 288 4421
kris.kalmbach@cushwake.com
LIC #01436668

KEVIN PARTINGTON
Executive Director
+1 916 288 4807
kevin.partington@cushwake.com
LIC #01199010

400 Capitol Mall, Suite 1800
main +1 916 288 4800
cushmanwakefield.com