

5938 LAUREL CANYON BLVD  
NORTH HOLLYWOOD, CA



## FOR LEASE 2,200 SF | EXCELLENT RETAIL SPACE WITH STREET FRONTAGE



RETAIL  
PROPERTY TYPE



2,200  
SF BUILDING



48,732  
AVG DAILY TRAFFIC



71 (VERY WALKABLE)  
WALK SCORE



IMMEDIATE  
FREEWAY ACCESS



\$100,393  
AVG HH INCOME (5 MILES)

**YAIR HAIMOFF, SIOR**

Executive Managing Director

📞 818.203.5429

✉️ [yhaimoff@spectrumcre.com](mailto:yhaimoff@spectrumcre.com)

DRE License #01414758

**NATHAN SHAOLIAN**

Associate

📞 818.642.4123

✉️ [nshaolian@spectrumcre.com](mailto:nshaolian@spectrumcre.com)

DRE License #02074836

**SPECTRUM**  
COMMERCIAL REAL ESTATE, INC.

No warranty, express or implied, is made as to the accuracy of the information contained herein. This information is submitted subject to errors, omissions, change of price, rental or other conditions, withdrawal without notice, and is subject to any special listing conditions imposed by our principals. Cooperating brokers, buyers, tenants and other parties who receive this document should not rely on it, but should use it as a starting point of analysis, and should independently confirm the accuracy of the information contained herein through a due diligence review of the books, records, files and documents that constitute reliable sources of the information described herein. Spectrum Commercial Real Estate, Inc., CA DRE #02042805

# FOR LEASE - RETAIL BUILDING

5938 Laurel Canyon Blvd, North Hollywood, CA

## PROPERTY FEATURES

- Prime Retail Building
- Tremendous Building and Pylon Signage Opportunity
- Heavy Car and Foot Traffic
- Ideal for Multiple Applications

## LOCATION HIGHLIGHTS

- Prominent North Hollywood Location
- Street Frontage and High Visibility Along Laurel Canyon Blvd.
- Immediate Freeway Access
- Strong Demographics

### YAIR HAIMOFF, SIOR

Executive Managing Director

☎ 818.203.5429

✉ [yhaimoff@spectrumcre.com](mailto:yhaimoff@spectrumcre.com)

DRE License #01414758

### NATHAN SHAOLIAN

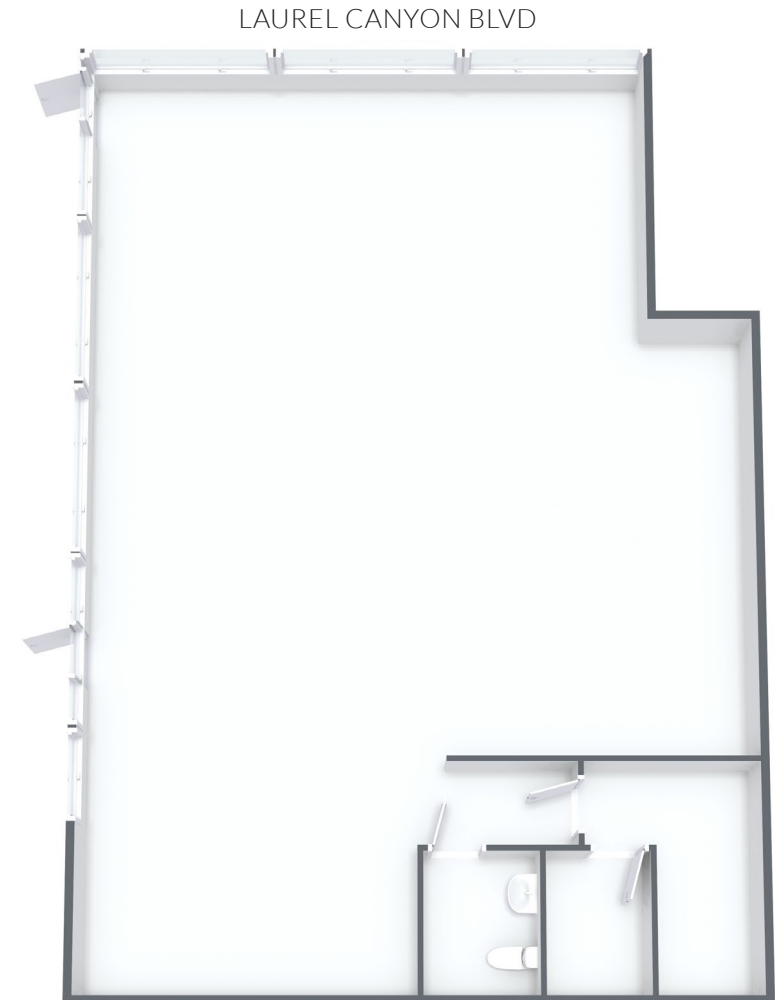
Associate

☎ 818.642.4123

✉ [nshaolian@spectrumcre.com](mailto:nshaolian@spectrumcre.com)

DRE License #02074836

## SITE PLAN



**SPECTRUM**  
COMMERCIAL REAL ESTATE, INC.

No warranty, express or implied, is made as to the accuracy of the information contained herein. This information is submitted subject to errors, omissions, change of price, rental or other conditions, withdrawal without notice, and is subject to any special listing conditions imposed by our principals. Cooperating brokers, buyers, tenants and other parties who receive this document should not rely on it, but should use it as a starting point of analysis, and should independently confirm the accuracy of the information contained herein through a due diligence review of the books, records, files and documents that constitute reliable sources of the information described herein. Spectrum Commercial Real Estate, Inc., CA DRE #02042805

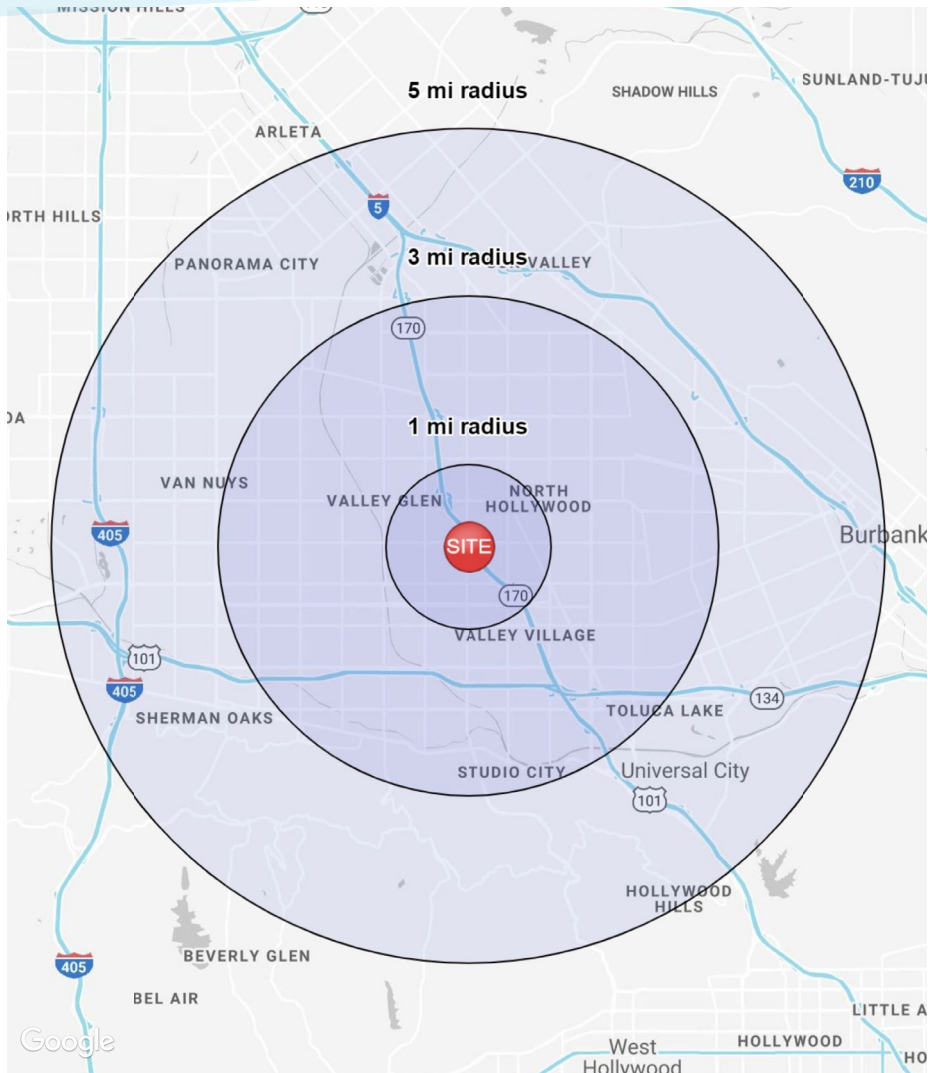
# FOR LEASE - RETAIL BUILDING

5938 Laurel Canyon Blvd, North Hollywood, CA



# FOR LEASE - RETAIL BUILDING

5938 Laurel Canyon Blvd, North Hollywood, CA



## POPULATION

	1 MILE	3 MILES	5 MILES
Estimated Population (2019)	43,449	327,461	653,076
Median Age	36.3	36.0	36.2



## HOUSEHOLD INCOME

	1 MILE	3 MILES	5 MILES
Estimated Average Household Income (2019)	\$75,302	\$91,102	\$100,393
Projected Average Household Income (2024)	\$88,720	\$108,943	\$120,561
Estimated Households	18,313	128,879	246,706



## DAYTIME DEMOGRAPHICS (2019)

	1 MILE	3 MILES	5 MILES
Total Businesses	1,720	15,824	36,697
Total Employees	10,612	103,309	283,411

**YAIR HAIMOFF, SIOR**

Executive Managing Director

📞 818.203.5429

✉️ yhaimoff@spectrumcre.com

DRE License #01414758

**NATHAN SHAOLIAN**

Associate

📞 818.642.4123

✉️ nshaolian@spectrumcre.com

DRE License #02074836

**SPECTRUM**  
COMMERCIAL REAL ESTATE, INC.

No warranty, express or implied, is made as to the accuracy of the information contained herein. This information is submitted subject to errors, omissions, change of price, rental or other conditions, withdrawal without notice, and is subject to any special listing conditions imposed by our principals. Cooperating brokers, buyers, tenants and other parties who receive this document should not rely on it, but should use it as a starting point of analysis, and should independently confirm the accuracy of the information contained herein through a due diligence review of the books, records, files and documents that constitute reliable sources of the information described herein. Spectrum Commercial Real Estate, Inc., CA DRE #02042805