

Colver

PUBLIC MARKET



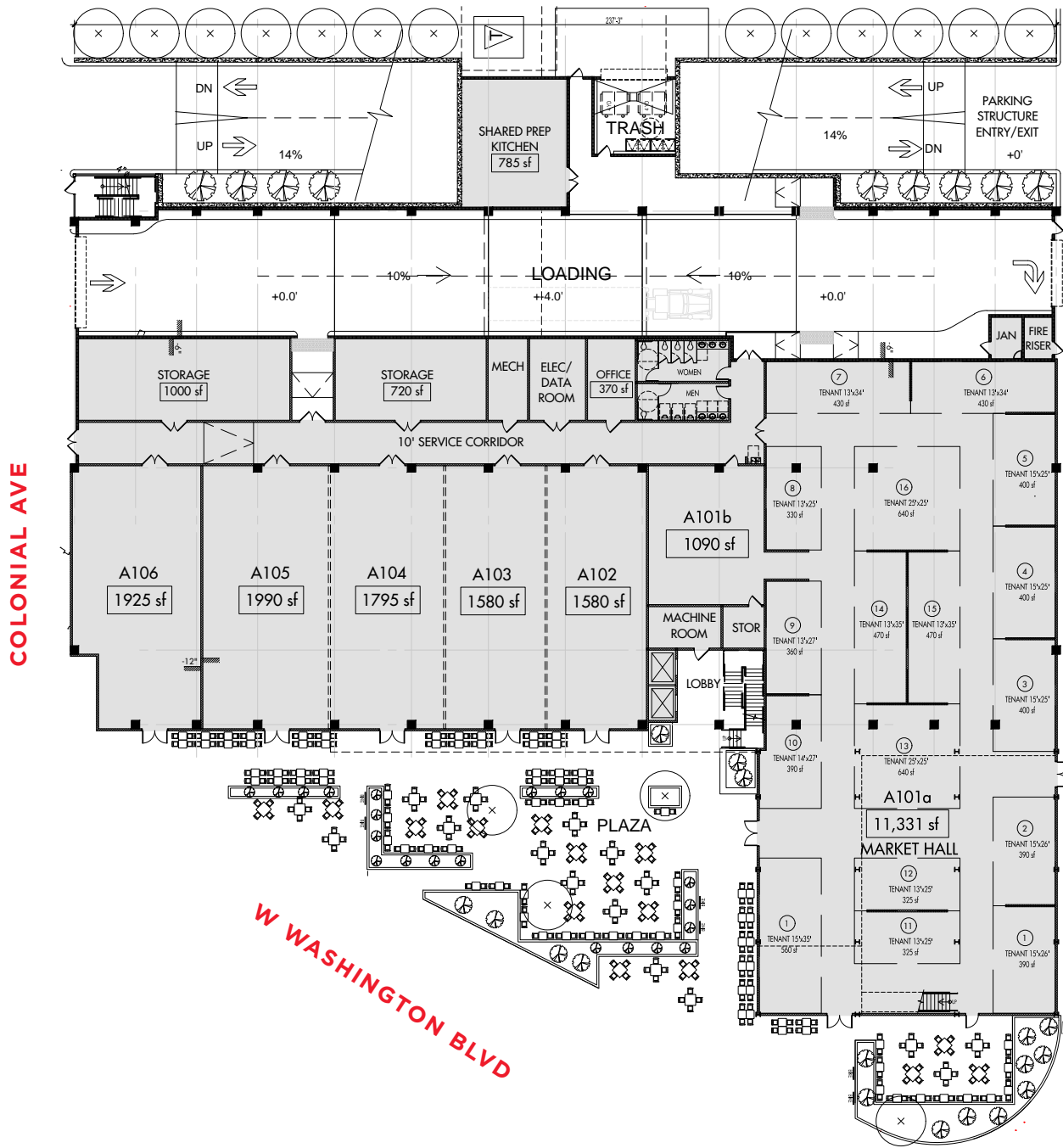
Coming Spring 2018



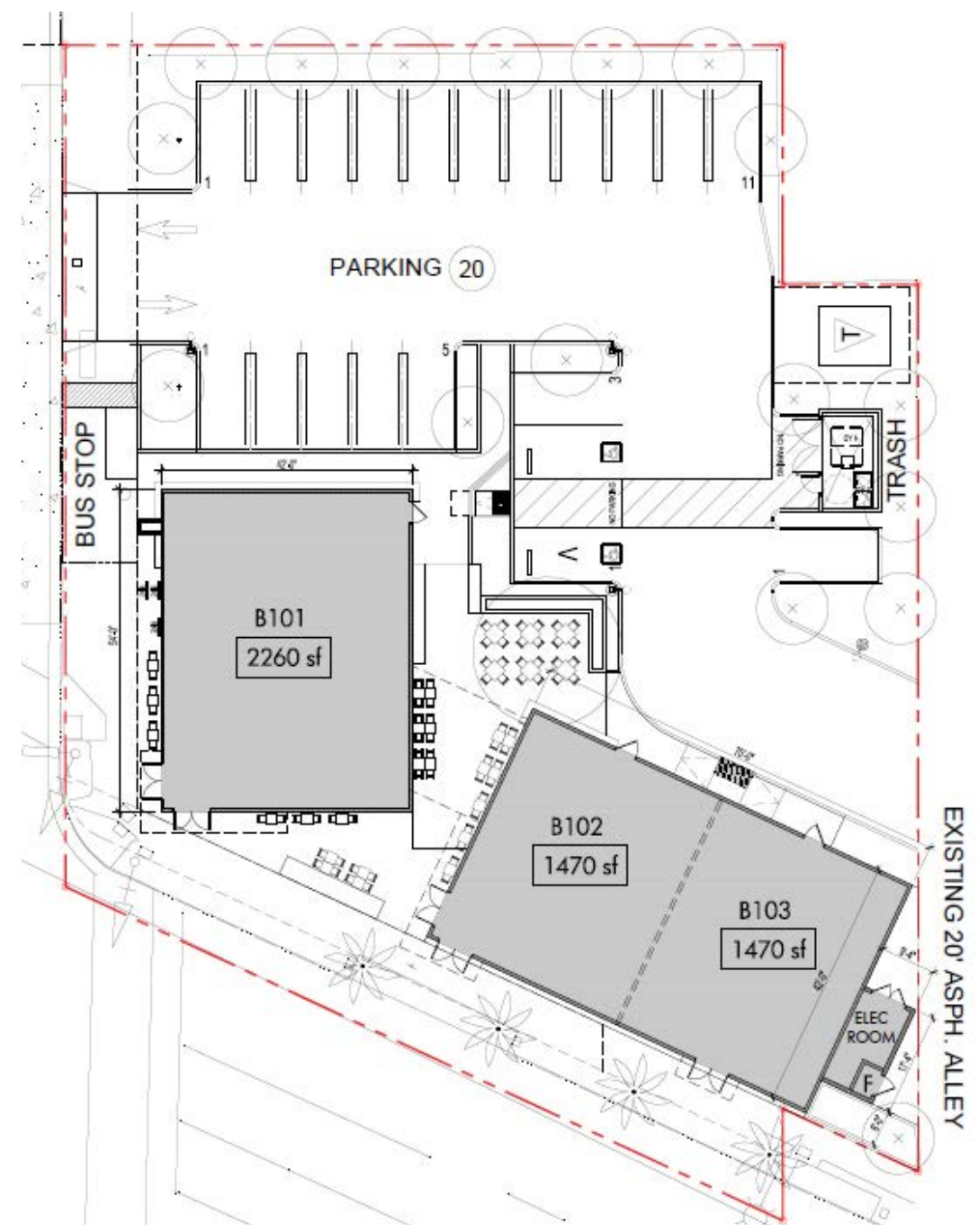
Build to suit food hall opportunities as well as full service restaurant, fitness and retail spaces.



SITE A



SITE B



Parking Count

260 Parking Stalls

SITE A

Centinela | 34,000 VPD

28 Parking Stalls

SITE B

Vehicles Per Day

Washington | 21,000 VPD



Drive Times

Santa Monica
15 minutes

Mar Vista
8 minutes

Downtown Culver City
10 minutes

Hayden Tract
12 minutes

Culver
PUBLIC MARKET

Venice
10 minutes

Marina Del Rey
10 minutes

Playa Vista
5 minutes

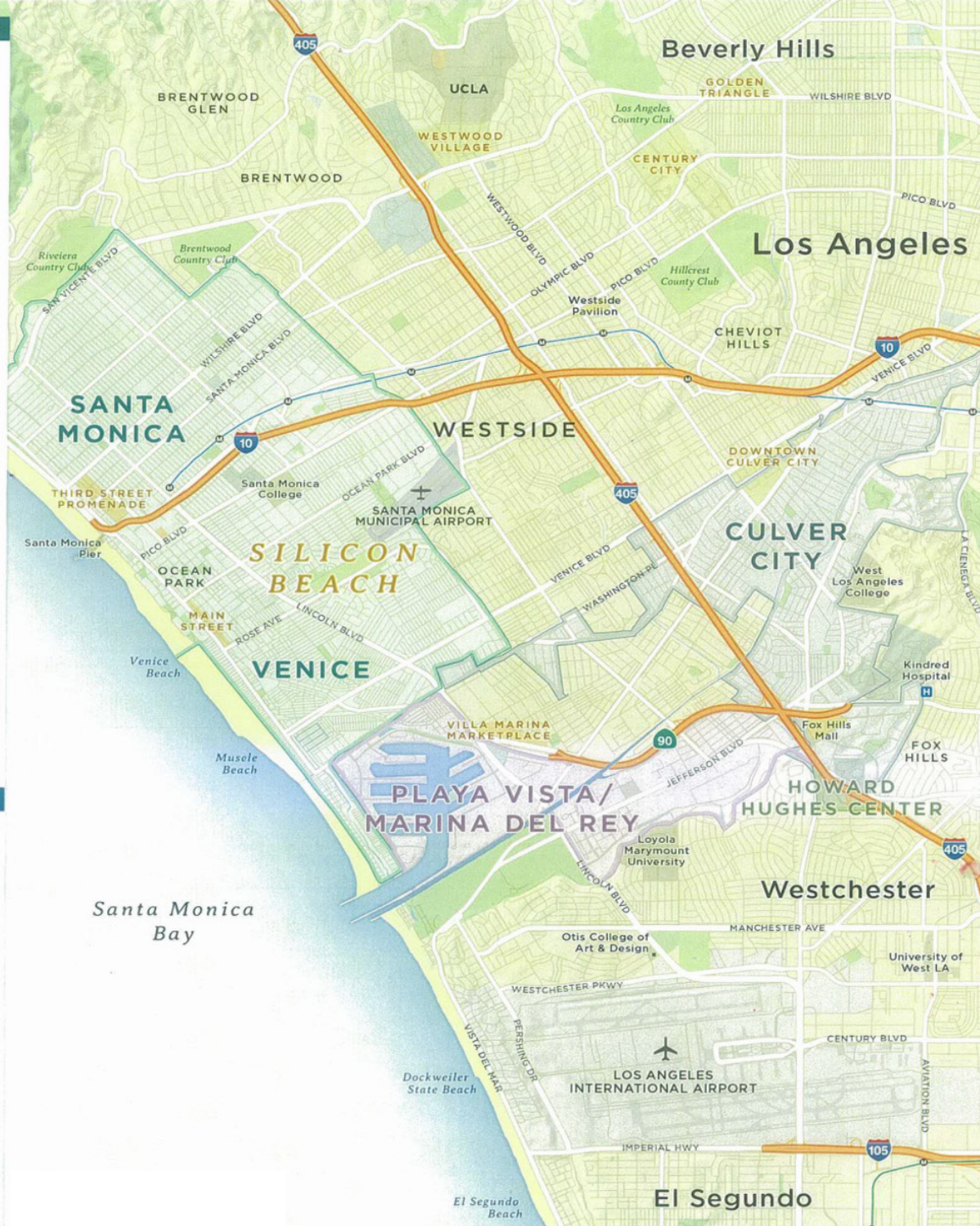
Westchester
10 minutes



Westside Office Tenants

In close proximity to creative office & large daytime populations.

SANTA MONICA · VENICE		
YAHOO!	Cornerstone OnDemand	LIONSGATE
HONEST CO.	UNIVERSAL	ascend media
BEACHMINT	LAUNCHPAD LA	TELEMUNDO
ROC	Mucker	Saint John's Health Center
shopbop	TRUECar	SONY BMG
ROCK	HBO	MACERICH
rpa	FANDANGO	RAND
SEARCHED	IMAX	RKO
hulu	shopzilla	VIACOM
F	WARNERBROS	CBS CO
ACTIVISION	Red Bull	
PANDORA	click clark productions	
amazon.com	deluxe	Demand Media
edmunds.com	PIXOMONDO	twitter
Google	Microsoft	snapchat
CULVER CITY		
WEEKLY	ORACLE	Symantec
NFL	Bla	npr
SONY PICTURES	(mt)	bidz
monkeyhead	ajvy	Ed Hardy
WONG GOODY	COMEDY CENTRAL	smashbox
ANONYMOUS content	lunchbox	Nike
KESLOW CAMERA	ZOIC	Mahalo
beats by dr.dre	MAKER	CULVER STUDIOS



WESTSIDE EMPLOYMENT CENTERS		
PLAYA VISTA · MARINA DEL REY		
facebook	Gebry Partners, LLP	DEX design studio
USC Institute for Creative Technologies	TOMS	ChowNow
Microsoft	Deutsch	Google
KONAMI	Jbicon	GiantMedia
belkin	RALEIGH STUDIOS	ISI
YouTube	SONY	DAA
TMZ	TBWA CHATL DAY	TVGLA
FOX	T	DIRECTV
genzyme	72and	XPRIZE
EARTHBOUND WORLD GROUP	TV GUIDE	YAHOO!
EA	DOLLAR SHAVE CLUB	LIONSGATE
ICANN	snapchat	KASTNER & PARTNERS
Aol.	EdgeCast	FULLSCREEN
LBL ARCHITECTS	PlayStation	team one
eHarmony	UBER	
HOWARD HUGHES CENTER		
ESF GAMEFLY	HEAVY IRON STUDIOS	1-800-DENTIST
ALL3MEDIA	GANNETT	GiantMedia
SONY	corbis	Experian
IM	UNIVISION	kpff
	PEPPERDINE UNIVERSITY	nami media
cricket		

Culver

PUBLIC MARKET



For more information please contact:

MATTHEW FAINCHEIN
Senior Director | Retail Services
Lic. 01503546
T (310) 595-2234
matthew.fainchtein@cushwake.com

CARTER MAGNIN
Senior Associate | Retail Services
Lic. 01909728
T (310) 595-2203
carter.magnin@cushwake.com

