

# FIRST PLACE

---

**2262 N. First Street: ±5,959 SF**

**2270 N. First Street: ±4,509 SF**

***(Can Be Combined for ±10,468 SF)***

**JON DECOITE**

Senior Director  
+1 408 615 3408  
jon.decoite@cushwake.com  
LIC #01471300

**MIKE BAKER**

Director  
+1 408 615 3406  
mike.baker@cushwake.com  
LIC #01884037



**CUSHMAN &  
WAKEFIELD**

**SWENSON**

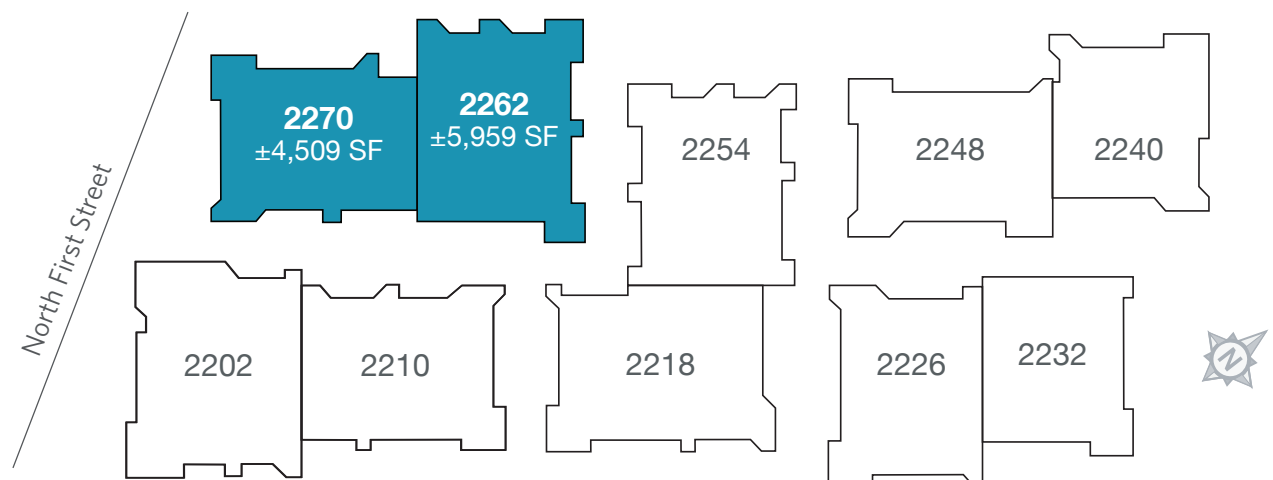


# FIRST PLACE



## PROPERTY HIGHLIGHTS

- Free-standing buildings
- Adjacent to VTA Light Rail Station
- Prominent signage on North First Street monument and suite entry
- Ample parking adjacent to each building
- No Load Factor or Restricted Building Hours - Suites Separately Metered
- Garden Setting with Outdoor Common Areas
- 4 parking spaces per 1,000 SF leased
- Convenient access to Highway 101 and Interstate 880

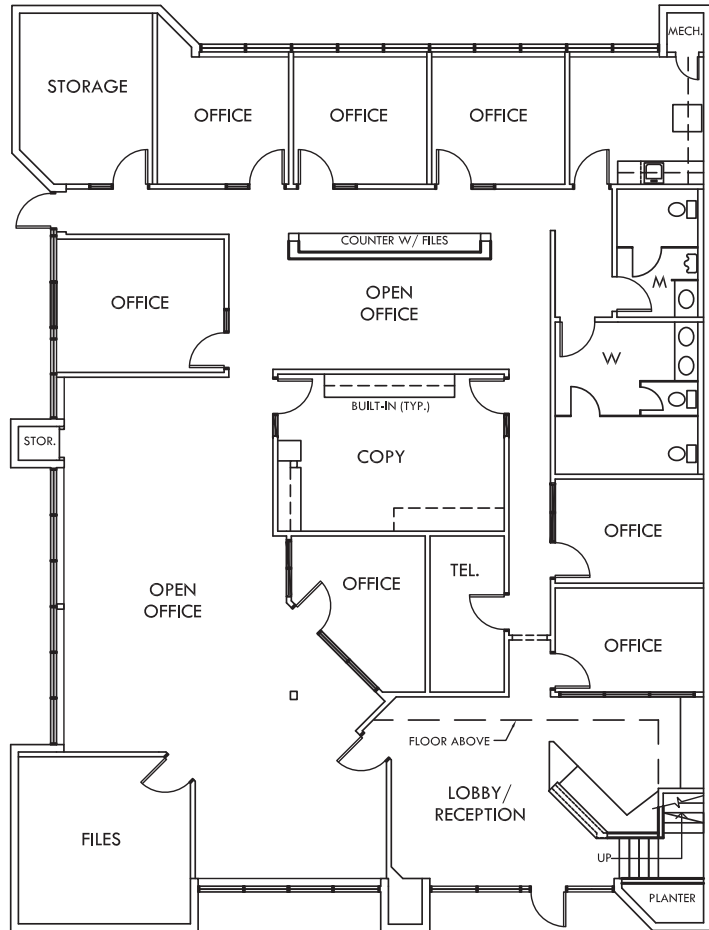


# FIRST PLACE

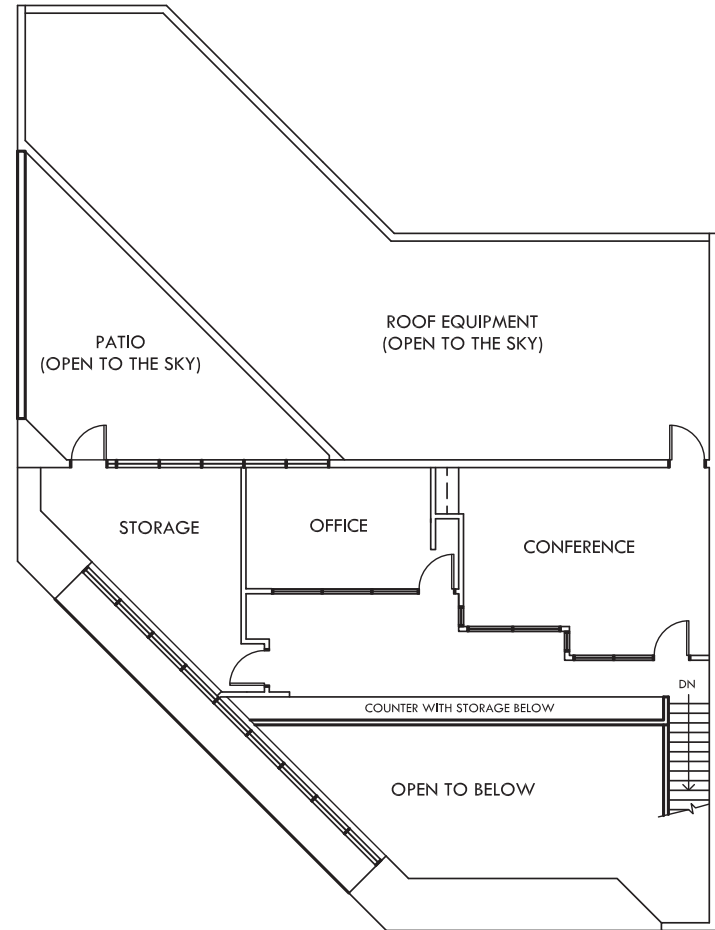
2262 N. First Street, San Jose | ±5,959 SF

## FLOOR PLAN

±5,959 SF - Available Now



FIRST FLOOR



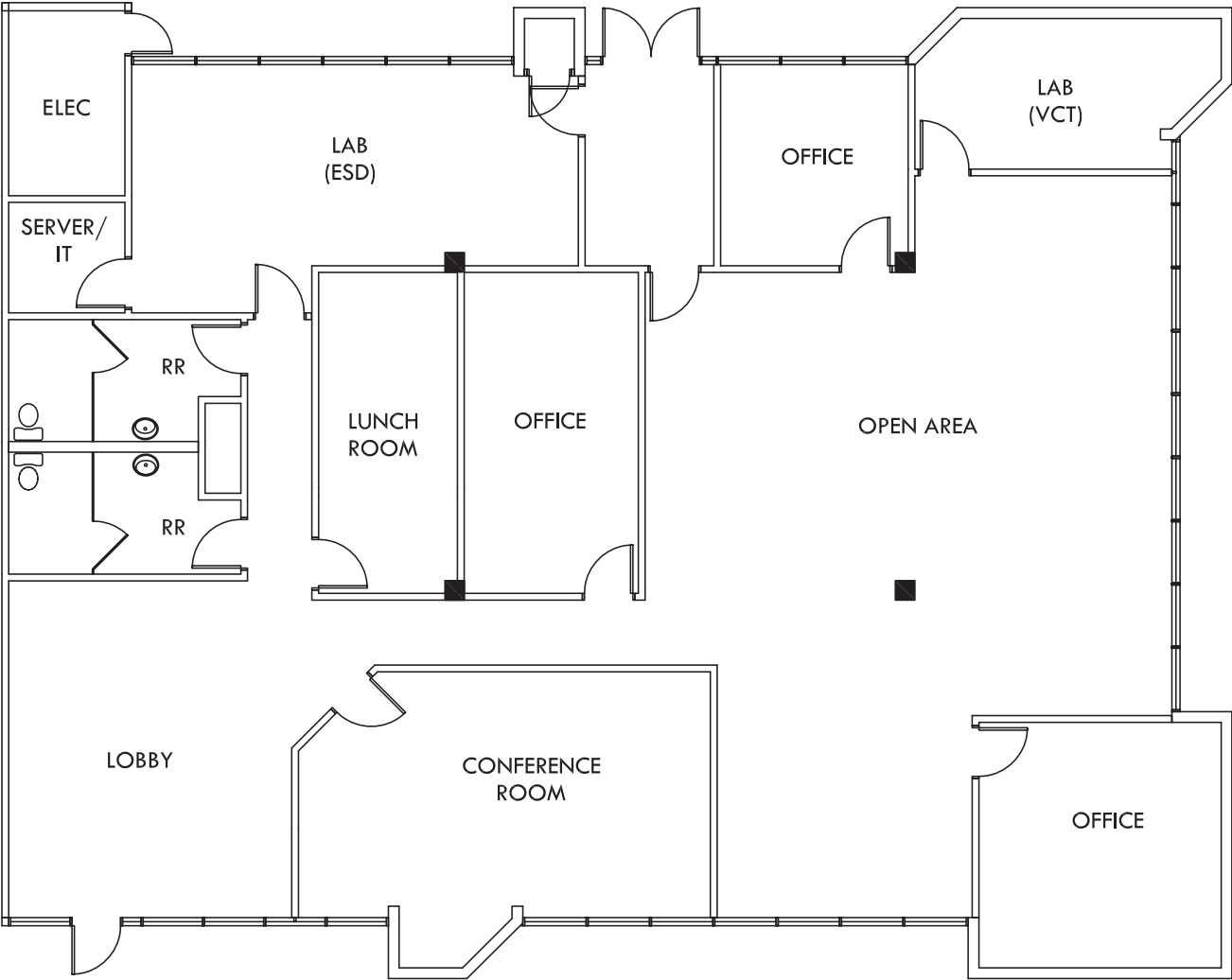
SECOND FLOOR

# FIRST PLACE

2270 N. First Street, San Jose | ±4,509 SF

## FLOOR PLAN

±4,509 SF - Available Now

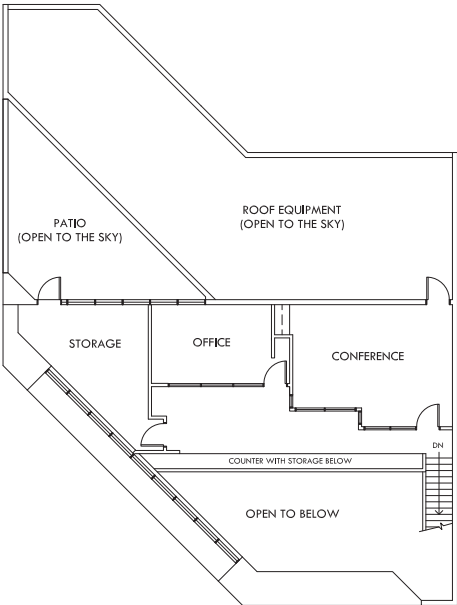


# FIRST PLACE

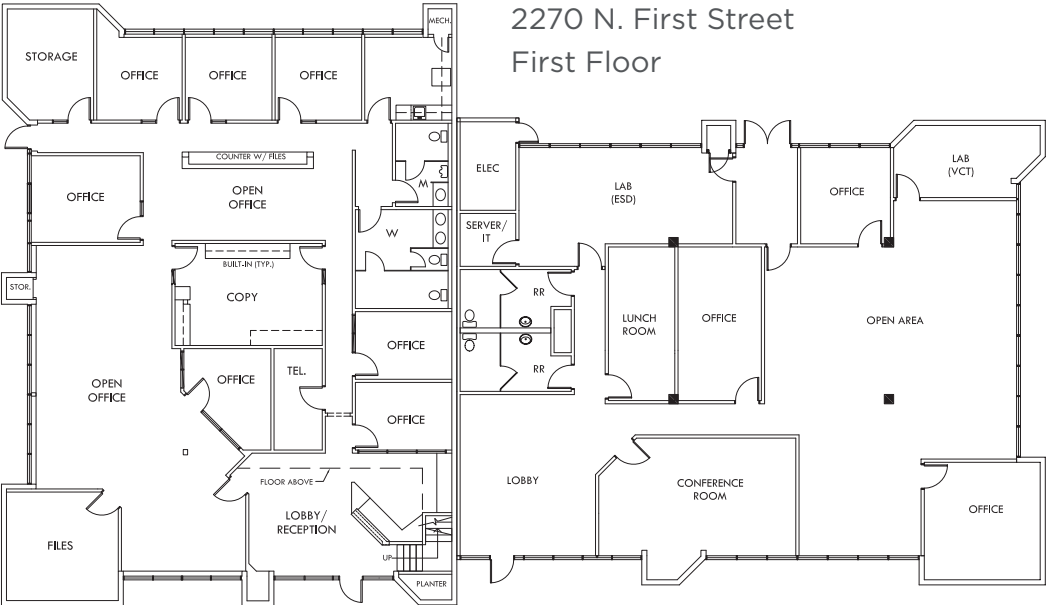
2262-2270 N. First Street, San Jose | ±10,468 SF

## FLOOR PLAN

±10,468 SF - Available Now



2262 N. First Street  
Second Floor



2270 N. First Street  
First Floor

2262 N. First Street  
First Floor



# FIRST PLACE

2262-2270 N. First Street, San Jose | ±10,468 SF

## AERIAL



### LOCATION:

First Place is located on the east side of North First Street, North of Brokaw and south of Charcot Avenue, approximately 1 mile east of Highway 101.

First Place is centrally located with easy access to Highways 101, 880 and 87.

## TRANSPORTATION





# FIRST PLACE

2262-2270 N. First Street, San Jose | ±10,468 SF

