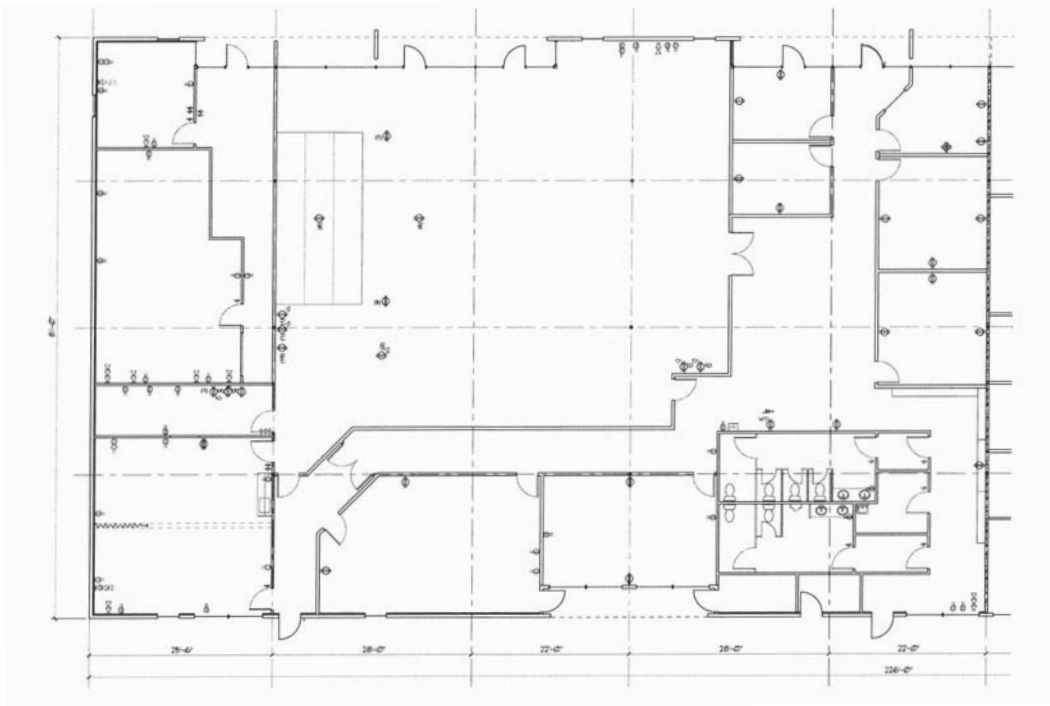


**10,166 SF OFFICE SPACE AVAILABLE
BUILDING 4, SUITE 440**

11900 NE 95TH STREET, SUITE 440, VANCOUVER, WA 98682



**SUITE 440
HIGHLIGHTS & FEATURES**

- 10,166 SF Office Space
- Large, Open Creative Office
- Coffee Bar
- Full Kitchen
- Several Meeting Rooms and Private Offices
- On-Site Property Management
- Restaurants and Retail Amenities nearby:
Los Jalapenos, Columbia Credit Union,
Papa John's Pizza, Chevron, Seize the Bagel
& Many More
- Ample Parking

Available: Now



paddencp.com

OWNED & MANAGED BY:



**Columbia
Commercial**
Commercial Leasing | Sales | Property Management



WESTCORE

NOW AVAILABLE! BUILDING 4, SUITE 440

11900 NE 95th Street, Suite 440, Vancouver, WA 98682



LEASING CONTACTS

Coleman Brown, CCIM
Columbia Commercial, LLC
Coleman@CCPprop.com
360.735.8001

Dave Brown, CCIM, SIOR
Columbia Commercial, LLC
Dave@CCPprop.com
360.735.8001

paddencp.com

