

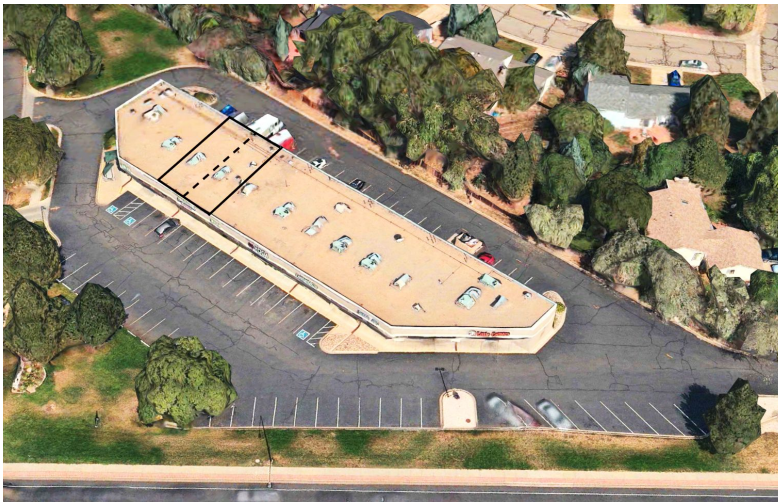
For Lease Lafayette, Colorado



1280 Centaur Village Dr. Prime Neighborhood Retail Space

Property Information:

- ◆ Units: 3 & 4: 975 - 2,015 sqft
- ◆ Rental Rate: \$18.50- \$22.00 NNN
- ◆ NNN are \$9.27 for 2022 and includes water and HVAC maintenance.
- ◆ Amazing exposure to South Boulder Road.
- ◆ Adjacent to many different uses including a salon, multiple food uses, pet supplies, chiropractor, and a yoga studio.
- ◆ Employee parking in the rear.



Abbie Brown, 303-974-7600, ext 1
brown@vistacommercial.com
Chris C. Jensen, 303-974-7600, ext 3
jensen@vistacommercial.com

Property details at <http://www.vistacommercial.com>

www.vistacommercial.com • 520 Courtney Way, Suite 100, Lafayette, Colorado 80026 • 303-974-7600

Commercial Real Estate Advisory Services

Vista Commercial Advisors, Inc. obtained information contained herein from sources believed to be reliable. The verification/accuracy is not guaranteed. It is submitted subject to errors, omissions, price change, rate, prior sale, lease or financing, or withdrawal without notice. You and your tax, broker and legal advisors should conduct your own investigation to confirm information. All marks displayed on this document are the property of their respective owners.



Abbie Brown , 303-974-7600, ext 1 brown@vistacommercial.com
Chris C. Jensen, 303-974-7600, ext 3 jensen@vistacommercial.com
 Property details at <http://www.vistacommercial.com>

www.vistacommercial.com • 520 Courtney Way, Suite 100, Lafayette, Colorado 80026 • 303-974-7600

Commercial Real Estate Advisory Services

Vista Commercial Advisors, Inc. obtained information contained herein from sources believed to be reliable. The verification/accuracy is not guaranteed. It is submitted subject to errors, omissions, price change, rate, prior sale, lease or financing, or withdrawal without notice. You and your tax, broker and legal advisors should conduct your own investigation to confirm information. All marks displayed on this document are the property of their respective owners.