

FOR LEASE

CLASS "A" OFFICE SPACE

2500 York Road

Jamison, Bucks County, PA



COMMERCIAL • INDUSTRIAL • INVESTMENT

High Visibility Location



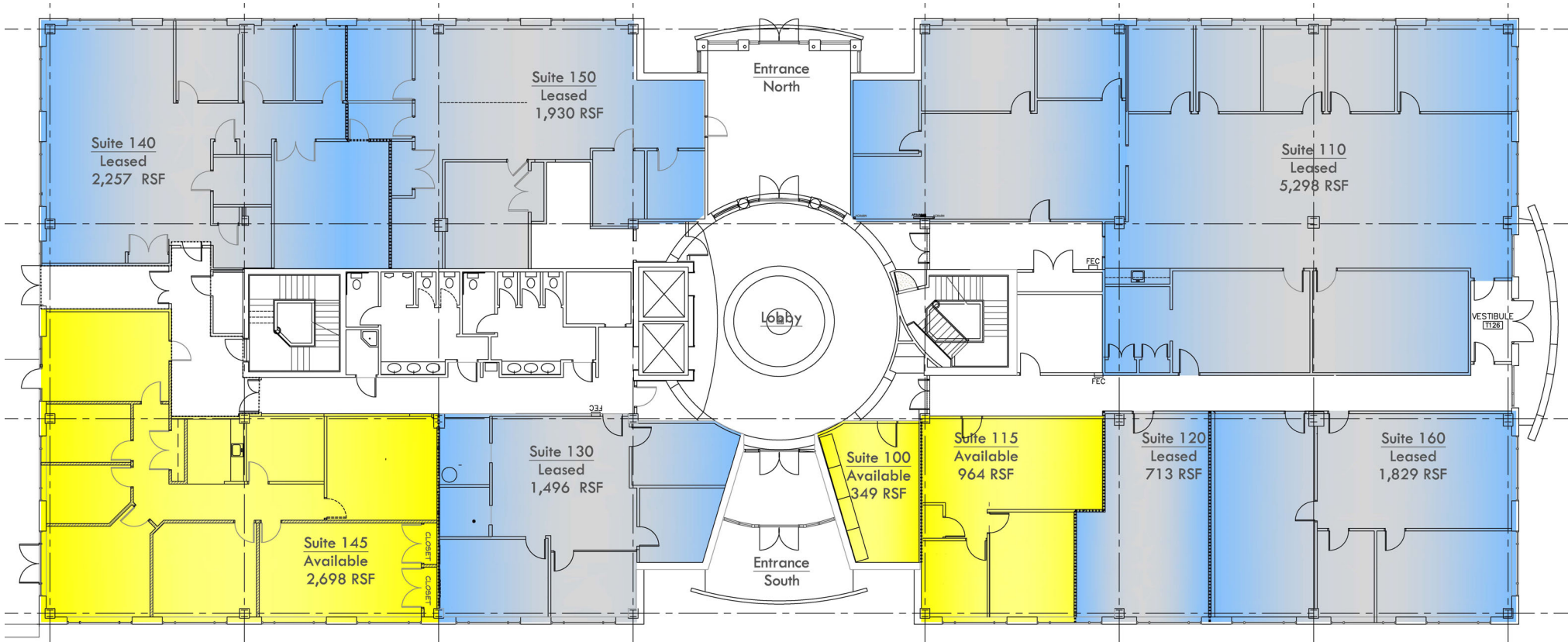
PRESENTED BY: *Kurt Eisenschmid, CCIM* — *Penn's Grant Realty Corporation*
2005 S Easton Rd, STE 306, Doylestown, PA • 215-489-3800 x3 • kurt@pgrealty.com • www.pgrealty.com

PROPERTY FEATURES

- **Two office suites available on the first floor**
 - Suite 100/115 - 1,313 Sq. Ft.
 - Suite 145 - 2,698 Sq. Ft.

Private exterior & interior entrances
- **Dramatic 2 story lobby atrium with balcony**
- **Daily janitorial services included**
- **Building access security system**
- **Excellent parking ratio**
- **Abundant natural light - Floor to ceiling window lines**
- **Auxiliary power for data communications**
- **Signalized intersection**
- **Floor plans can be modified to suit**
- **\$22.50 PSF plus utilities**

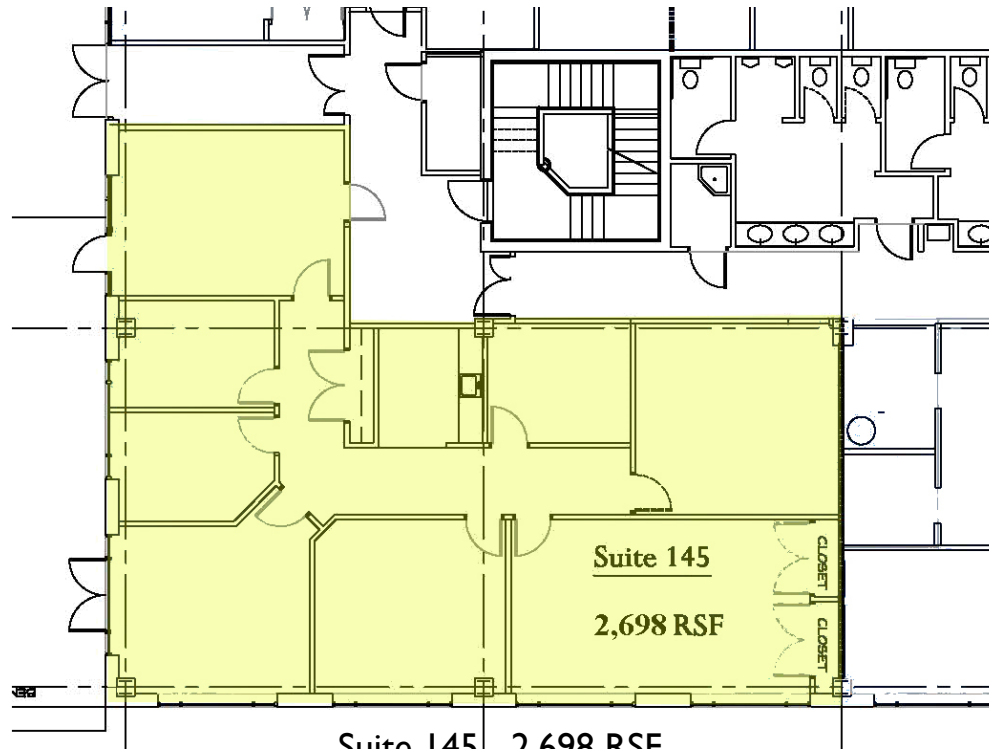




Available Suites:

Suite 100/115 - 1,313± RSF

Suite 115 - 2,698± RSF



Suite 145 - 2,698 RSF



